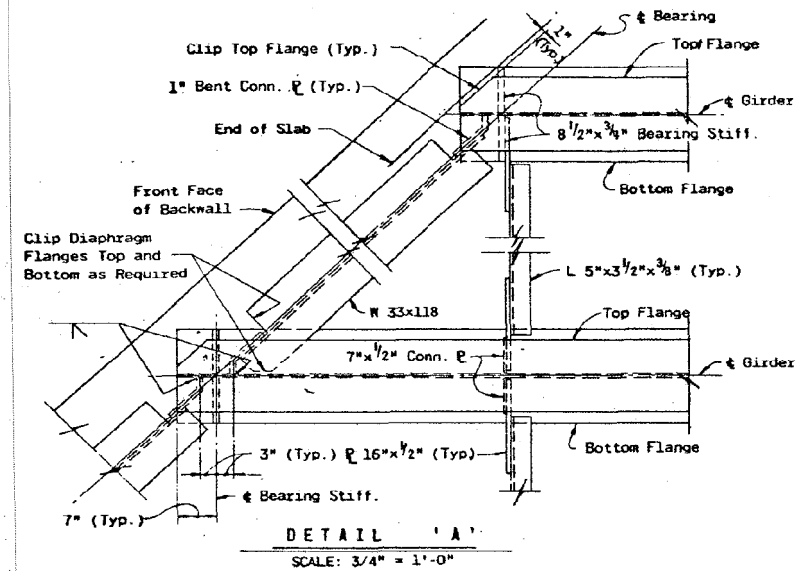
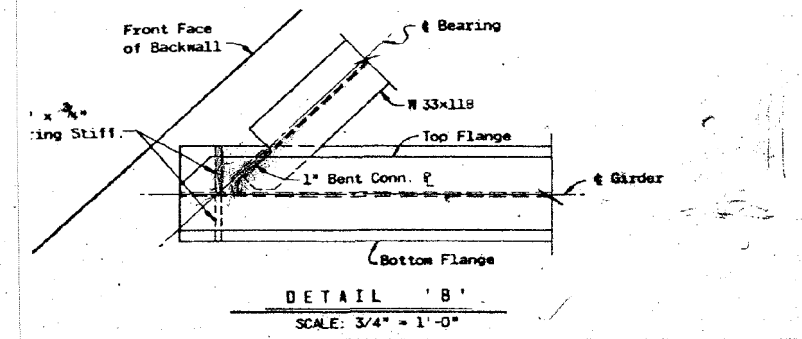


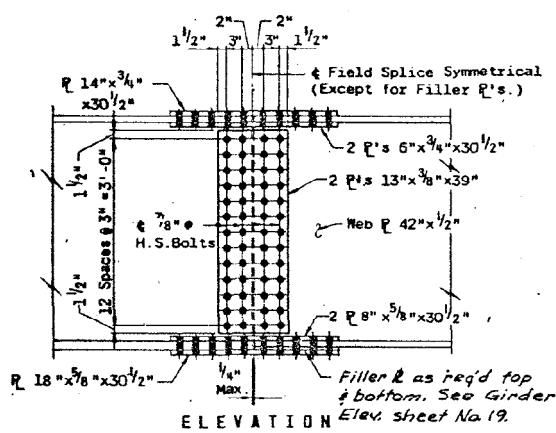
TYPICAL CROSS SECTION  
SCALE: 3/4" = 1'-0"



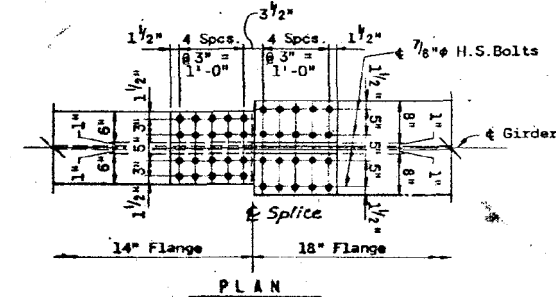
DETAIL 'A'  
SCALE: 3/4" = 1'-0"



DETAIL 'B'  
SCALE: 3/4" = 1'-0"

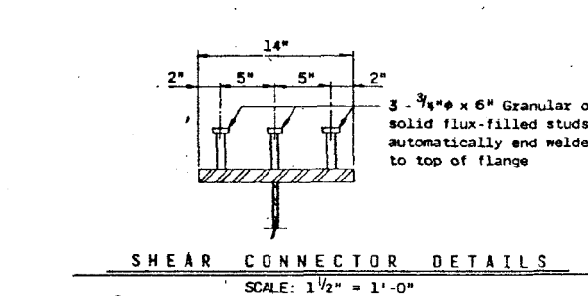


ELEVATION  
SCALE: 3/4" = 1'-0"

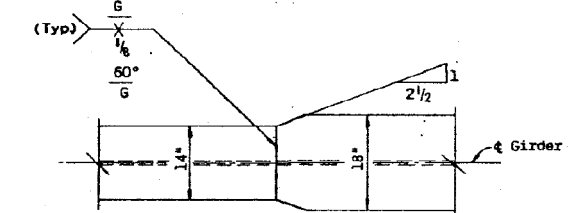


PLAN  
SCALE: 3/4" = 1'-0"

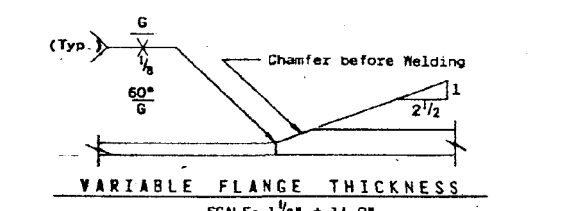
\* FIELD SPLICE DETAILS  
\* For Information Only: See Framing Plan



SHEAR CONNECTOR DETAILS  
SCALE: 1 1/2" = 1'-0"

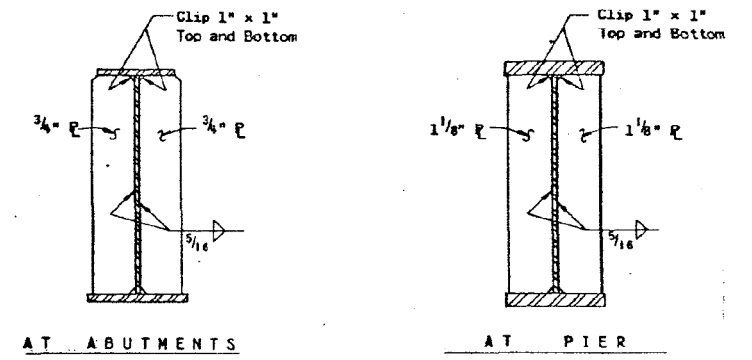


VARIABLE FLANGE WIDTH  
SCALE: 3/4" = 1'-0"



VARIABLE FLANGE THICKNESS  
SCALE: 1 1/2" = 1'-0"

WELDED FLANGE SPLICE DETAILS  
SCALE: AS NOTED



BEARING STIFFENER DETAILS  
SCALE: 3/4" = 1'-0"

NOTE: Bearing Stiffeners shall be milled on the bearing end and have a tight fit at the other end.

- NOTE:
- For locations of Details A and B and Field Splices and additional notes, See Sheet 12.
  - For Slab Reinforcing, See Sheet 12.

REVISIONS		DEPARTMENT OF HIGHWAYS			
DATE	BY	DESCRIPTION	COOK COUNTY, ILLINOIS		
			GEORGE W. BLANKE PRESIDENT BOARD OF COMMISSIONERS		
			SUPERINTENDENT OF HIGHWAYS		
			STRUCTURAL STEEL DETAILS		
			STONY ISLAND CONNECTOR FAI 94 LINE E STRUCTURE		
			PROJECT	SCALE	
			KNORLE, BENDER, STONE & ASSOCIATES INC.	APPROVED	
			CONSULTING ENGINEERS	CHIEF ENGINEER	
			CHICAGO, ILLINOIS		
APPROVED	APRIL 4, 2012	FAI	COUNTY HWY.	Sheet	Total
		Route No.	Route No.	No.	Sheets
		122	174A	20	57

2:30:53 PM

3/29/2013

SA:1072.05.CADD.Structure.dwg SN:0162471.CADD.Sheets:0162471-60112-018-F:04.dgn

BOWMAN, BARRETT & ASSOCIATES INC.  
CONSULTING ENGINEERS  
Chicago, Illinois  
312.228.0100  
www.bbainc.com

USER NAME =	DESIGNED -	REVISED -
PLOT SCALE =	CHECKED - BAK	REVISED -
PLOT DATE = 03/29/2013	DRAWN -	REVISED -
	CHECKED -	REVISED -

STATE OF ILLINOIS  
DEPARTMENT OF TRANSPORTATION

EXISTING PLANS (FOR INFORMATION ONLY)  
STRUCTURE NO. 016-2471

SHEET NO. S-48 OF S-63 SHEETS

F.A.I. RTE.	SECTION	COUNTY	TOTAL SHEETS	SHEET NO.
94	2012-059-BR	COOK	631	541
CONTRACT NO. 60J12				
ILLINOIS FED. AID PROJECT				