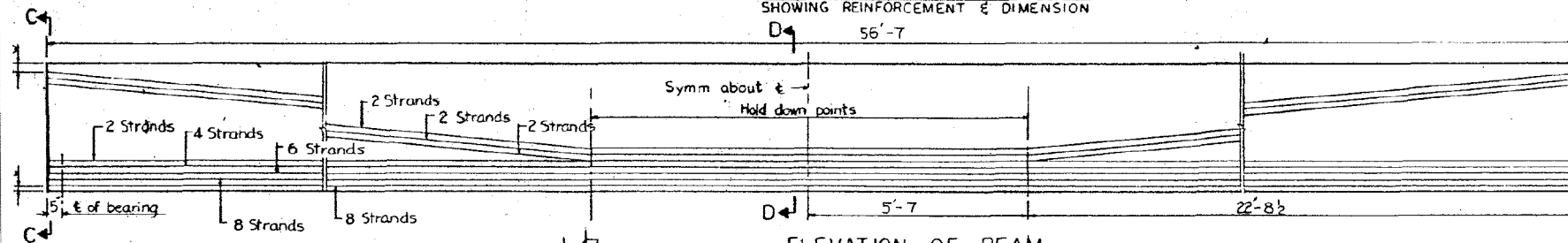
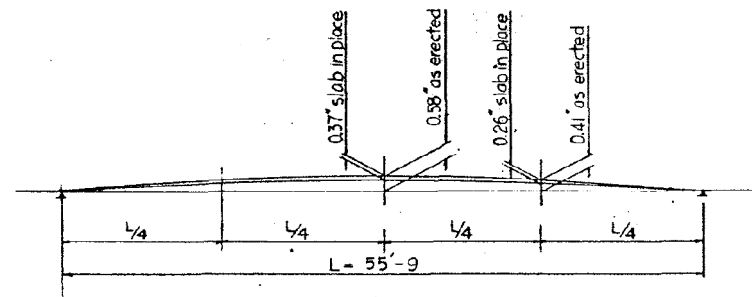
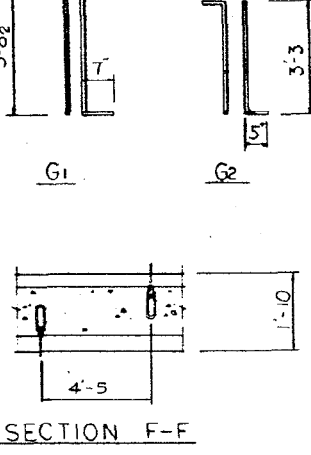
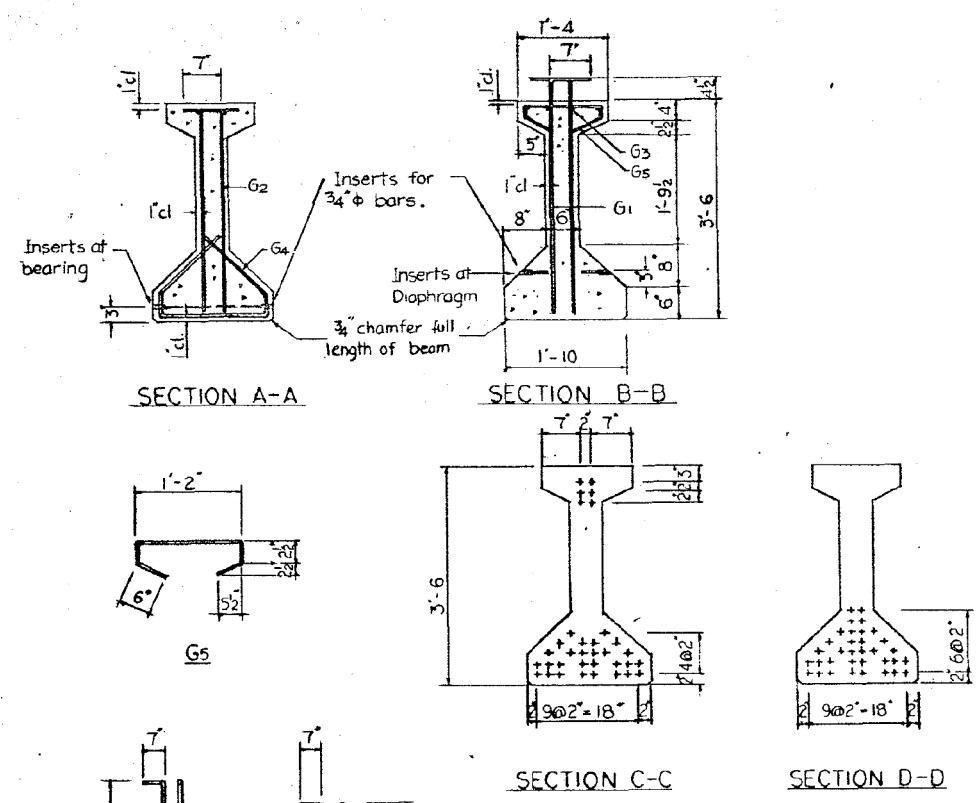


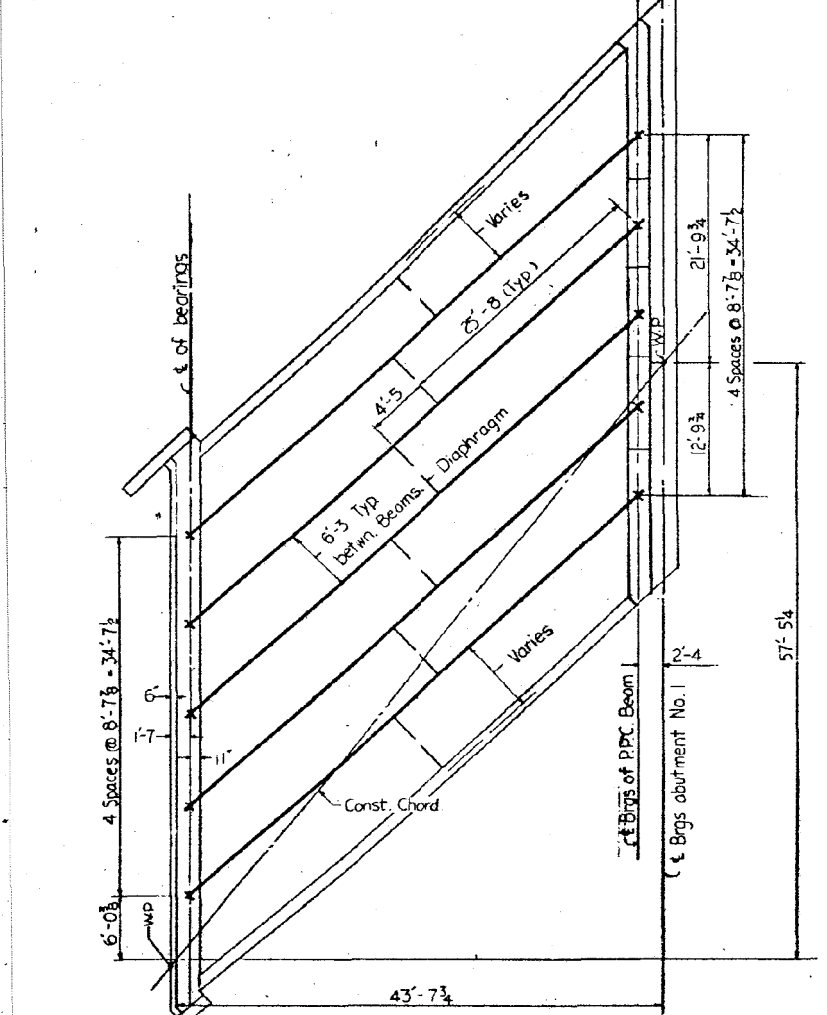
ELEVATION OF BEAM
SHOWING REINFORCEMENT & DIMENSION



ELEVATION OF BEAM
SHOWING PRESTRESSING STEEL



CAMBER DIAGRAM



FRAMING PLAN
SHOWING OF PPC BEAM

NOTES

Prestressing tendons are 7 wire 7/16" ϕ (nominal diameter) stress relieved Strands.
 $f'_s = 248$ ksi.
 $f_{si} = 173$ ksi.

An alternate strand pattern using Extra High Strength Prestressing Strand (270 ksi) is Permitted.

All strands to have initial Prestressing Force of 18.9 k/strand.

All inserts and threaded rods for inserts, reinforcement and Prestressing Steel, and other items which are cast into the Precast Concrete I-Beam shall be included in the contract unit price per linear foot of Furnishing and Erecting Precast Prestressed Concrete I-Beam, 42" inch.

Insert for 3/4" ϕ threaded rods are to be two strut coil type at bearings of I-Beams and single coil flared loop type at intermediate diaphragms.

Steel for lifting hooks shall be non-deformed bars of Structural or intermediate grade billet steel.

End of beams to be encased with cast in place concrete shall not be coated with asphalt paint.

For diaphragm details see sheet No. 11.

*BAR LIST

BAR NO.	SIZE	LENGTH	SHAPE
G1	#4	4'-10 1/2"	L
G2	#4	4'-3"	L
G3	#6	29'-0"	—
G4	#3	3'-3 1/2"	L
G5	#3	2'-7"	C

* FOR ONE BEAM

BILL OF MATERIAL

ITEM	UNIT	TOTAL
Furnishing & Erecting Precast Prestressed Concrete I-Beam, 42"	Lin Ft.	283

REVISION

DATE	BY	DESCRIPTION

DEPARTMENT OF HIGHWAYS
 COOK COUNTY, ILLINOIS

GEORGE W. DUNNE
 PRESIDENT BOARD OF COMMISSIONERS

PRECAST PRESTR. CONC. I-BEAM 42"
 STONY ISLAND CONNECTOR FAI 94
 LINE E STRUCTURE

PROJECT: EBU 246 (75)
 SCALE: 1/4" = 1'-0"

APPROVED: [Signature]
 CHIEF ENGINEER

122 174A 18 77

2/3/03 PM 3/29/2013 3:10:27 PM 0162471.CADD Sheets\0162471-60112-051-FY07.dgn SA\072_05_CADD\Structure\1 SN 0162471.CADD Sheets\0162471-60112-051-FY07.dgn