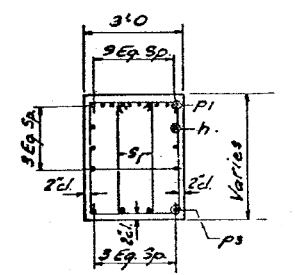
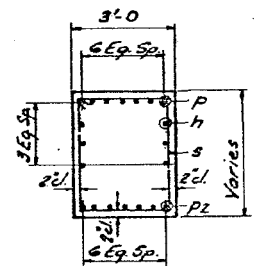


TOP PLAN



SECTION A-A

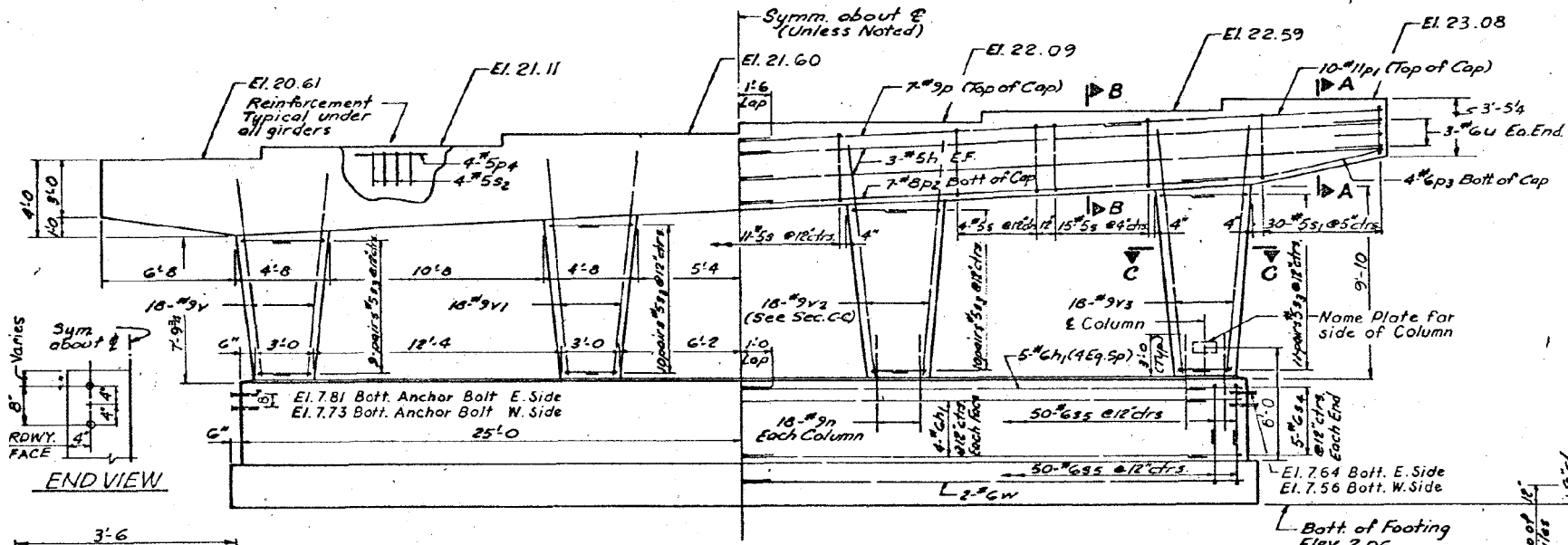
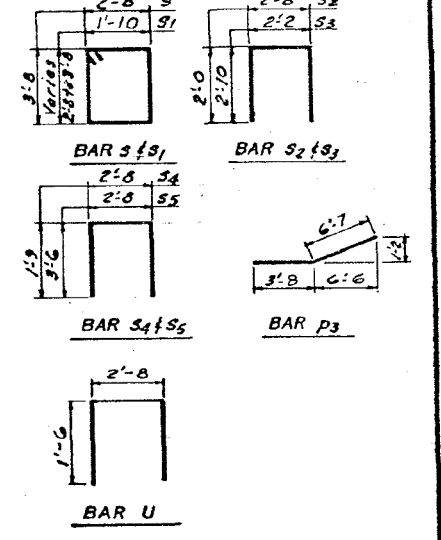


SECTION B-B

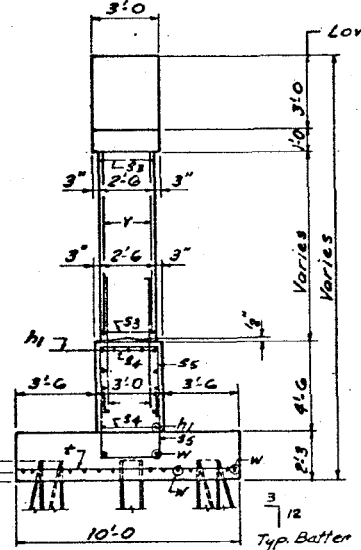
BILL OF MATERIAL				
BAR	NO	SIZE	LENGTH	SHAPE
h	12	#5	33'-6"	—
h1	26	#6	25'-7"	—
n	72	#9	6'-0"	—
p	14	#9	21'-6"	—
p1	20	#11	13'-4"	—
p2	14	#8	25'-6"	—
p3	8	#6	10'-3"	—
p4	24	#5	3'-0"	—
s	49	#5	13'-7"	—
s1	60	#5	Varies	—
s2	24	#5	6'-8"	—
s3	80	#5	7'-10"	—
s4	10	#6	6'-2"	—
s5	100	#6	9'-8"	—
t	68	#6	9'-8"	—
u	6	#6	5'-8"	—
v	18	#9	11'-0"	—
v1	18	#9	12'-0"	—
v2	18	#9	12'-6"	—
v3	18	#9	13'-0"	—
w	28	#6	26'-0"	—

\*Varies 9'-11 to 11'-11

ITEM	UNIT	TOTAL
REINFORCEMENT BARS	LB.	15624
CLASS "X" CONCRETE	C.Y.	110.4
EXCAVATION	C.Y.	83.5
STEEL PILES	LIN. FT.	676



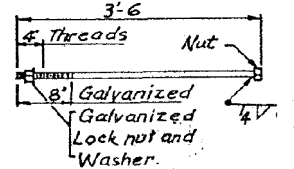
ELEVATION



SECTION C-C

END VIEW

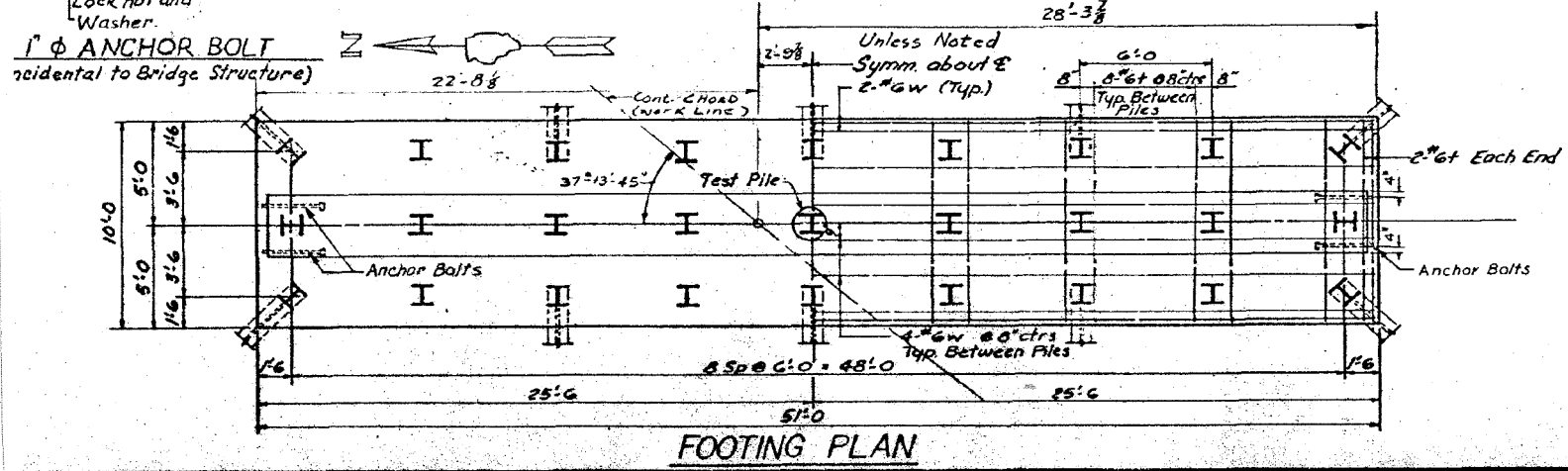
**PILE DATA**  
 Type: Steel H Pile HP 10x42  
 Capacity: 40 Tons  
 Est. Length: 26'  
 \*No. Req'd: 26  
 Test Pile: 1  
 \* Does not include Test Pile



1/2" Ø ANCHOR BOLT  
 incidental to Bridge Structure

TOP OF PAD ELEVATIONS AND SKEW ANGLES

GIRDER	STA.	SKEW L	ELEV.
G1	57+17.24	35°-55'-29"	20.61
G2	57+07.28	36°-31'-20"	21.11
G3	56+97.61	37°-06'-10"	21.60
G4	56+88.21	37°-40'-01"	22.09
G5	56+79.04	38°-12'-56"	22.59
G6	56+70.16	38°-45'-00"	23.08



FOOTING PLAN

REVISIONS		
DATE	BY	DESCRIPTION

DEPARTMENT OF HIGHWAYS  
 COOK COUNTY, ILLINOIS  
 GEORGE W. DUMME, PRESIDENT BOARD OF COMMISSIONERS  
 SUPERINTENDENT OF HIGHWAYS

**PIER DETAILS**  
 STONY ISLAND CONNECTOR FAI 94  
 LINE E STRUCTURE

PROJECT EBU 246 (76)  
 SCALE 4"=1'-0"  
 APPROVED: [Signature]  
 COUNTY HWY. No. 122, Route No. 174A, Sheet No. 37 of 97

231110 PH 3/29/2013 SA1072.05-CADD-S-true-tur-e-1-SN 0162471-CADD Sheets 0162471-60112-053-F101.dgn

BOWMAN, BARRETT & ASSOCIATES INC.  
 CONSULTING ENGINEERS  
 Chicago, Illinois  
 312.228.0100  
 www.bbandainc.com

USER NAME =	DESIGNED -	REVISED -
PLOT SCALE =	CHECKED - BAK	REVISED -
PLOT DATE = 03/29/2013	DRAWN -	REVISED -
	CHECKED -	REVISED -

STATE OF ILLINOIS  
 DEPARTMENT OF TRANSPORTATION

EXISTING PLANS (FOR INFORMATION ONLY)  
 STRUCTURE NO. 016-2471

SHEET NO. S-53 OF S-63 SHEETS

F.A.I. RTE.	SECTION	COUNTY	TOTAL SHEETS	SHEET NO.
94	2012-059-BR	COOK	631	546

CONTRACT NO. 60J12  
 ILLINOIS FED. AID PROJECT