

ELEVATION C-C

PILE DATA
 Type: Steel H Pile HP10x42
 Capacity: 46 Tons
 No. Req'd: 7
 Est. Length: 46'

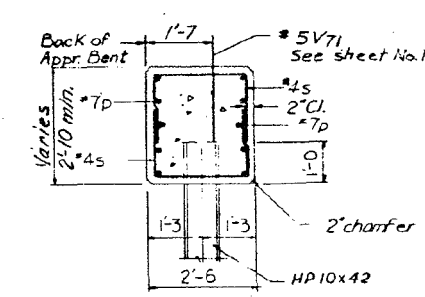
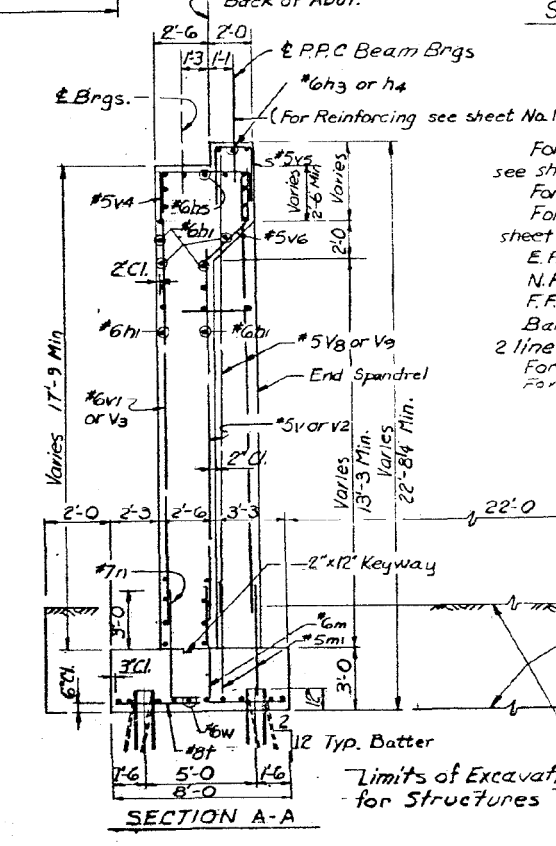
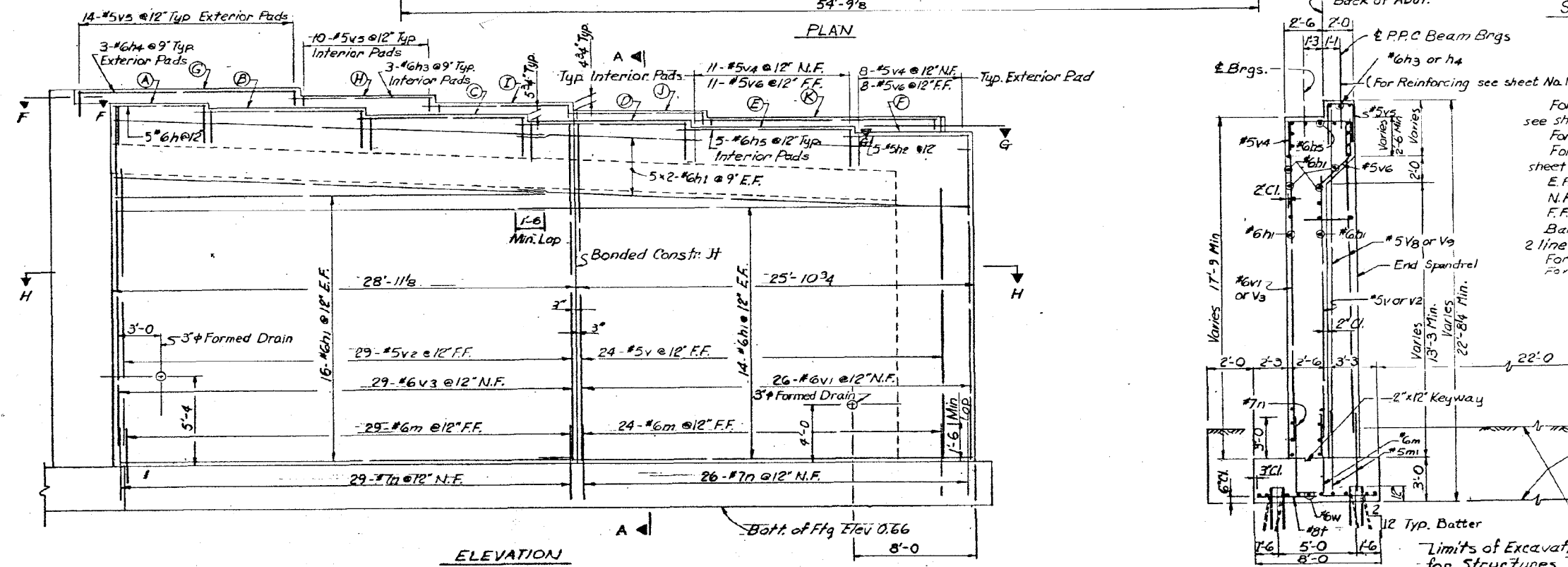


TABLE OF ELEV.

Brq. Pad	Elev.
A	23.80
B	23.32
C	22.84
D	22.36
E	21.88
F	21.40
G	24.94
H	24.54
I	24.14
J	23.74
K	23.34



NOTES

For Footing Plan and Curtain Wall Detail see sheet No. 23.
 For section G-G, H-H & F-F see sheet No. 24.
 For reinforcement Detail and Bill of Material see sheet No. 24.
 E.F. Indicates Each Face
 N.F. Indicates Near Face
 F.F. Indicates Far Face
 Bars marked thus 2x5-#5 etc. indicate 2 lines of bars with 5 lengths per line.
 For Pile Cap Encasement Detail see Sheet No. 39.
 For Footing Layout plan see Sheet No. 8.

REVISIONS

DATE	BY	DESCRIPTION

DEPARTMENT OF HIGHWAYS
 COOK COUNTY, ILLINOIS

GEORGE W. DUNNE
 PRESIDENT BOARD OF COMMISSIONERS

ABUTMENT NO. 1 PLAN & ELEVATION
 STONY ISLAND CONNECTOR FAI 94
 LINE E STRUCTURE

PROJECT: EBU 246.1761
 SCALE: AS SHOWN
 APPROVED: *G. A. Orling*

KNOERLE, BENDER, STONE & ASSOCIATES INC.
 CONSULTING ENGINEERS
 CHICAGO, ILLINOIS

APPROVED: *Robt. A. Z...*
 CHIEF ENGINEER

F.A.I. RTE.	SECTION	COUNTY	TOTAL SHEETS	SHEET NO.
94	2012-059-BR	COOK	631	547
CONTRACT NO. 60J12				

2/23/13 PM
 3/29/2013
 SA:1072.05.CADD.Structure.dwg SN:0162471.CADD_Sheets.dwg 0162471-60112-054-FY10.dwg