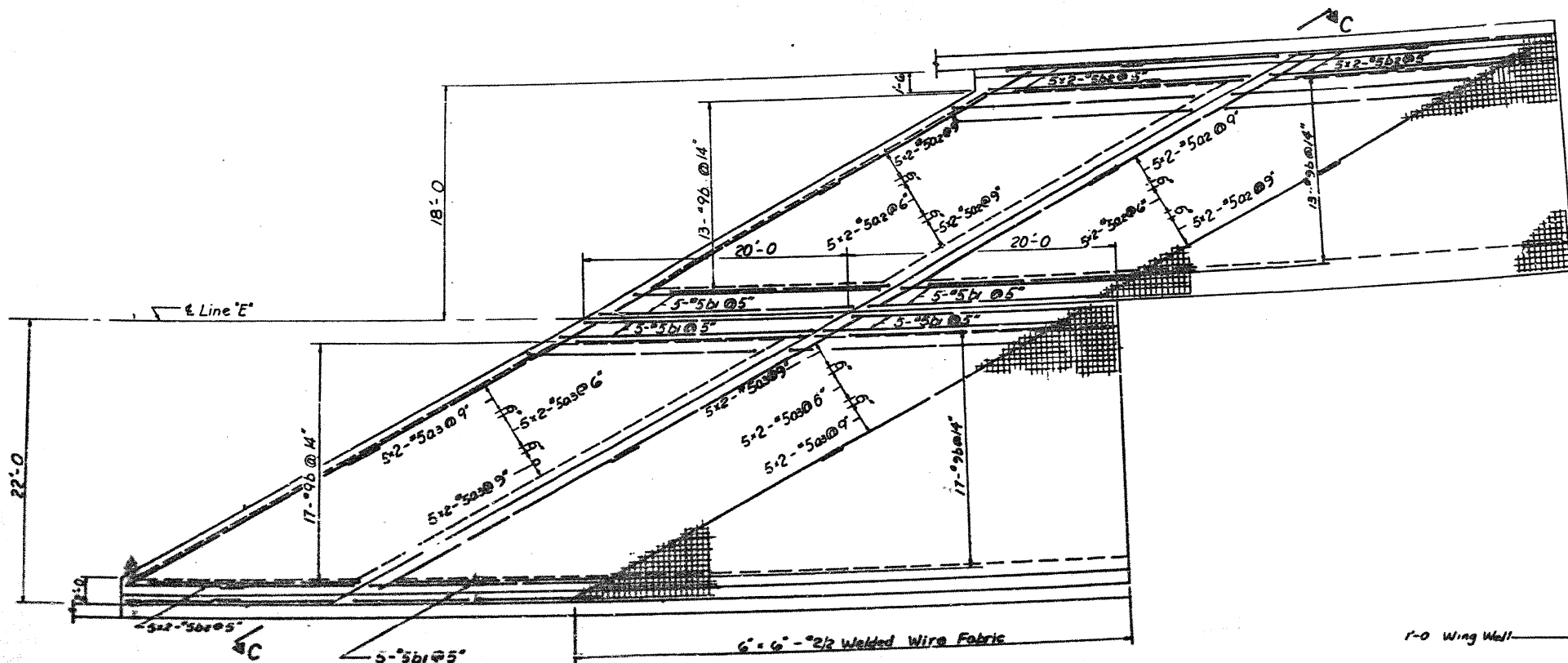


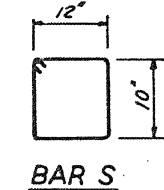
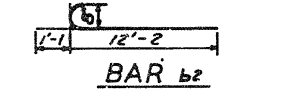
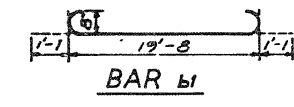
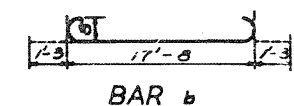
2:31:48 PM

3/29/2013

SA:1072, 05-CADD, S:\cadd\structure\1-SN-0162471-CADD_Sheets\0162471-60112-063-FY13.dgn



PLAN - APPROACH SLAB NO. 2



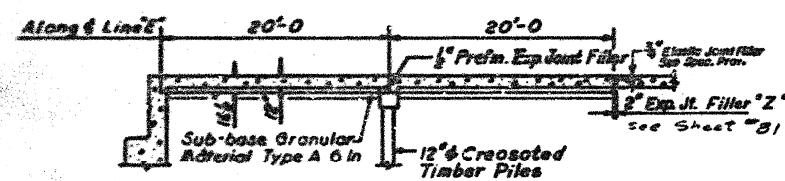
*BILL OF MATERIAL				
BAR NO.	SIZE	LENGTH	SHAPE	
a	#5	28'-6		
a1	#5	23'-2		
a2	#5	20'-6		
a3	#5	24'-6		
b	#9	20'-2		
b1	#5	21'-10		
b2	#5	13'-3		
P	#8	27'-6		
P1	#8	29'-6		
S	#4	4'-5		

*Includes Approach Slab No. 1 & No. 2.

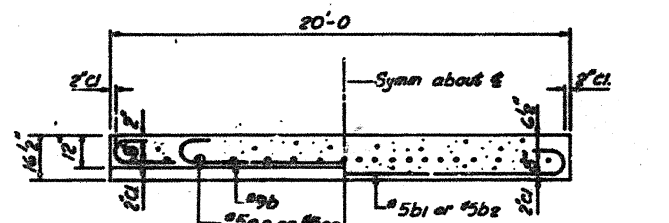
APPROACH SLAB NO. 2 QUANTITIES		
ITEM	UNIT	TOTAL
PORTLAND CEMENT CONCRETE PAVEMENT (16 1/2" - 12" - 16 1/2")	S. Y.	252.8
CLASS X CONCRETE	C. Y.	5.8
REINFORCEMENT BARS	L.B.	10052
SUB-BASE GRANULAR MATERIAL TYPE A (6 IN.)	S. Y.	253
PROTECTIVE COAT	S. Y.	261

GENERAL APPROACH SLAB NOTES

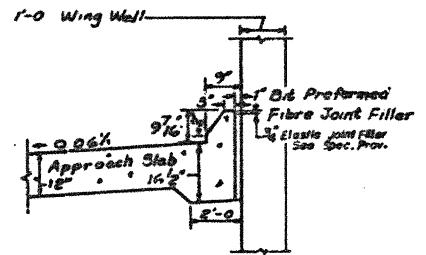
The slab or slabs will be paid for at the contract unit price for PORTLAND CEMENT CONCRETE PAVEMENT (16 1/2" - 12" - 16 1/2")
 The concrete cap will be paid for at the contract unit price for CLASS X CONCRETE
 All Reinforcement Bars will be paid for at the contract unit price for REINFORCEMENT BARS, except as noted.
 The Welded Wire Fabric and Preformed Expansion Joint Filler shall be included in the unit price bid for PORTLAND CEMENT CONCRETE PAVEMENT (16 1/2" x 12" x 16 1/2")
 Preformed Expansion Joint Filler shall conform to Section 715 of the Standard Specification.
 Width of Bridge Approach Slab pours shall be determined before the reinforcement bars are fabricated.



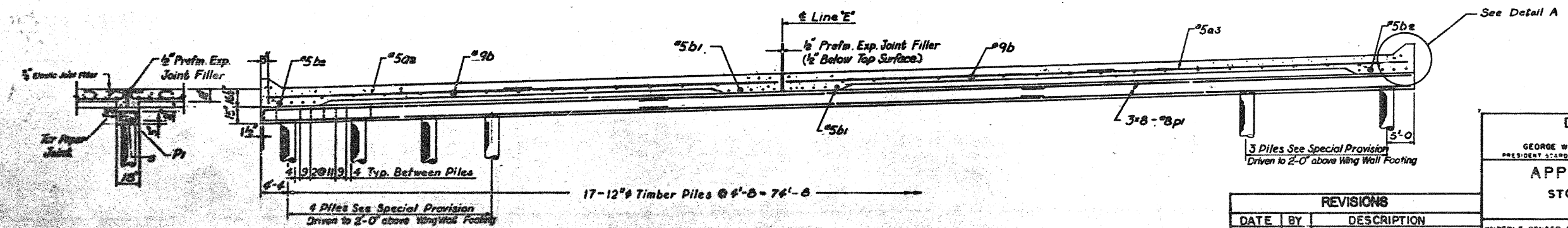
SECTIONAL VIEW



LONGITUDINAL SECTION THRU CENTER OF SLAB



DETAIL A



SECTION C-C

REVISIONS		
DATE	BY	DESCRIPTION

DEPARTMENT OF HIGHWAYS
 COOK COUNTY, ILLINOIS
 GEORGE W. DUNNE
 PRESIDENT BOARD OF COMMISSIONERS

APPROACH SLAB DETAILS
 STONY ISLAND CONNECTOR FAI 94
 LINE E STRUCTURE

ENGINEER: HENDERLE, BENDER, STONE & ASSOCIATES INC.
 CONSULTING ENGINEERS
 CHICAGO, ILLINOIS

PROJECT: EBU 249 (76)
 SCALE: APPROVED: H.A. O'Donnell

APPROVED: April 4, 77
 COUNTY HWY: 122
 ROUTE NO.: 174A
 SHEET NO.: 52
 TOTAL SHEETS: 97

BOWMAN, BARRETT & ASSOCIATES INC.
 CONSULTING ENGINEERS
 Chicago, Illinois
 312.228.0100
 www.bbainc.com

USER NAME =	DESIGNED -	REVISED -
PLOT SCALE =	CHECKED - BAK	REVISED -
PLOT DATE = 03/29/2013	DRAWN -	REVISED -
	CHECKED -	REVISED -

STATE OF ILLINOIS
 DEPARTMENT OF TRANSPORTATION

EXISTING PLANS (FOR INFORMATION ONLY)
 STRUCTURE NO. 016-2471

SHEET NO. S-63 OF S-63 SHEETS

F.A.I. RTE.	SECTION	COUNTY	TOTAL SHEETS	SHEET NO.
94	2012-059-BR	COOK	631	556
CONTRACT NO. 60J12				
ILLINOIS FED. AID PROJECT				