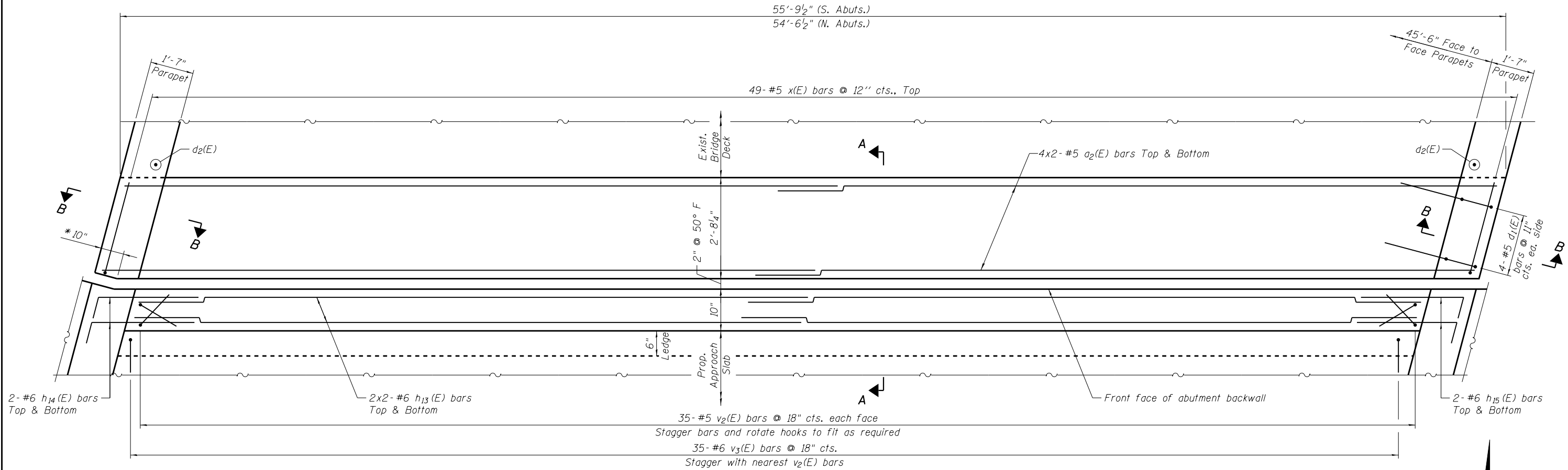


2:54:56 PM

3/29/2013

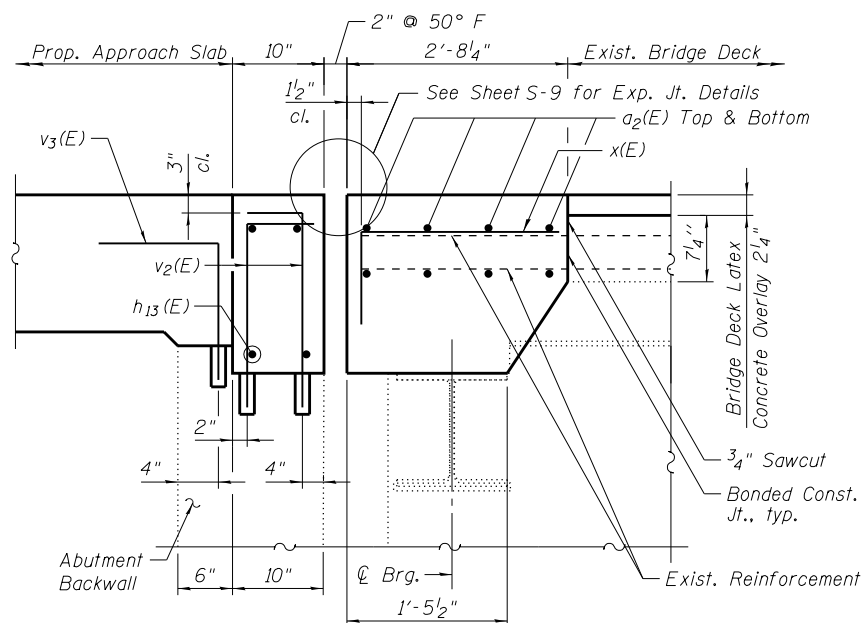
S:\1072_05_CADD\Structure\1 SN 0162441_2442\CADD Sheets\0162441-2442-66J12-005-FJ501.dgn



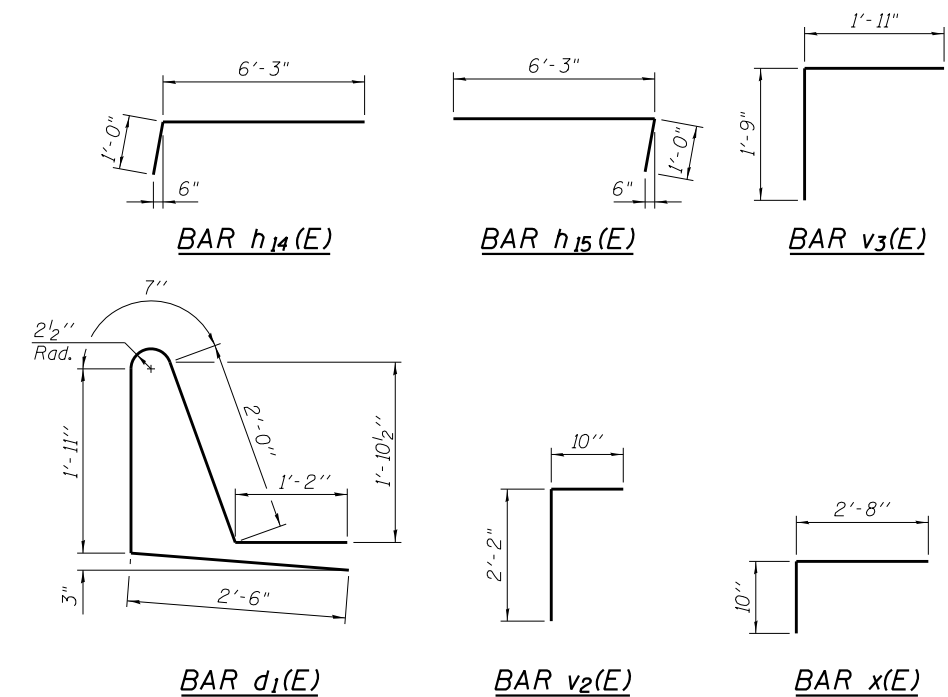
DECK PLAN AT EXPANSION JOINTS

(S. Abuts. shown, N. Abuts. similar)

* Bend or cut reinforcement bars to fit.



SECTION A-A



**FOUR EXPANSION JOINTS
BILL OF MATERIAL**

Bar	No.	Size	Length	Shape
a ₂ (E)	64	#5	29'-7"	—
d ₁ (E)	32	#5	8'-2"	└
h ₁₃ (E)	32	#6	28'-2"	—
h ₁₄ (E)	16	#6	7'-3"	└
h ₁₅ (E)	16	#6	7'-3"	└
v ₂ (E)	280	#5	3'-0"	└
v ₃ (E)	140	#6	3'-8"	└
x(E)	196	#5	3'-6"	└
Concrete Superstructure			Cu. Yd.	39.4
Reinforcement Bars, Epoxy Coated			Pound	6,320
Protective Coat			Sq. Yd.	80
Bridge Deck Grooving			Sq. Yd.	78

MIN. BAR LAP

#5 bar = 3'-8"
#6 bar = 4'-5"

Notes:
Existing reinforcement bars shall be cut to fit, cleaned and incorporated into new construction. Any bar damaged during removal operations shall be replaced with an epoxy-grouted bar. Cost included with Concrete Removal.
Bars indicated thus 4x2-#5 etc. indicates 4 lines of bars with 2 lengths per line.
Epoxy grout v₂(E) and v₃(E) bars in 9" min. drilled holes according to Section 584 of the Standard Specifications.
Order v₂(E) and v₃(E) bars after field verifying dimensions and determining depth of drilled holes.
For Section B-B, see Sheet S-6.

BOWMAN, BARRETT & ASSOCIATES INC.
CONSULTING ENGINEERS
Chicago, Illinois
312.228.0100
www.bbbanda.com

USER NAME =	DESIGNED - JGC	REVISED -
PLOT SCALE =	CHECKED - BAK	REVISED -
PLOT DATE = 03/29/2013	DRAWN - JGC	REVISED -
	CHECKED - BAK	REVISED -

STATE OF ILLINOIS
DEPARTMENT OF TRANSPORTATION

DECK DETAILS AT EXPANSION JOINTS
STRUCTURE NOS. 016-2441 & 016-2442

SHEET NO. S-5 OF S-31 SHEETS

F.A.I. RTE.	SECTION	COUNTY	TOTAL SHEETS	SHEET NO.
94	2012-059-BR	COOK	631	561
CONTRACT NO. 60J12				
ILLINOIS FED. AID PROJECT				