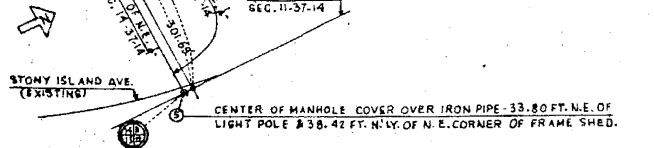
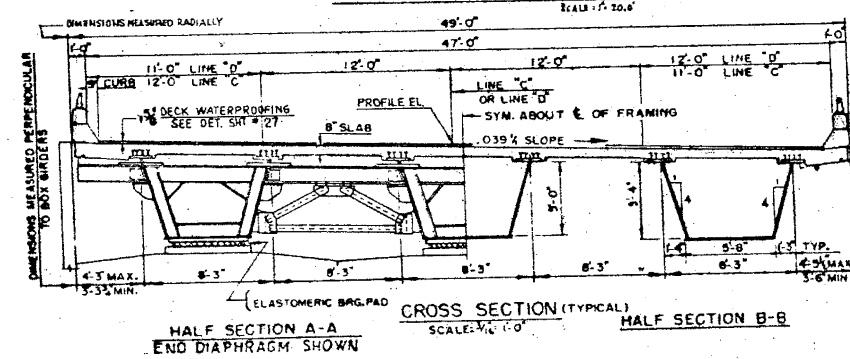
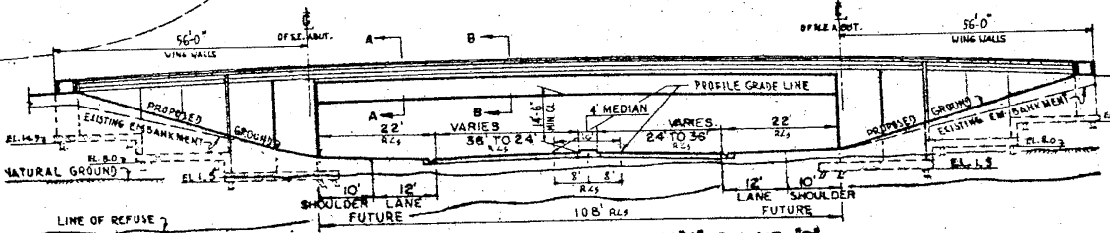
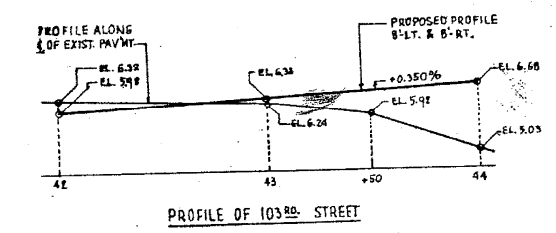
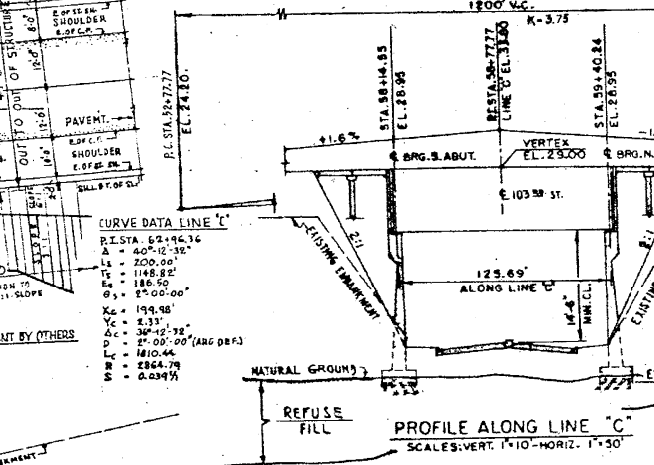
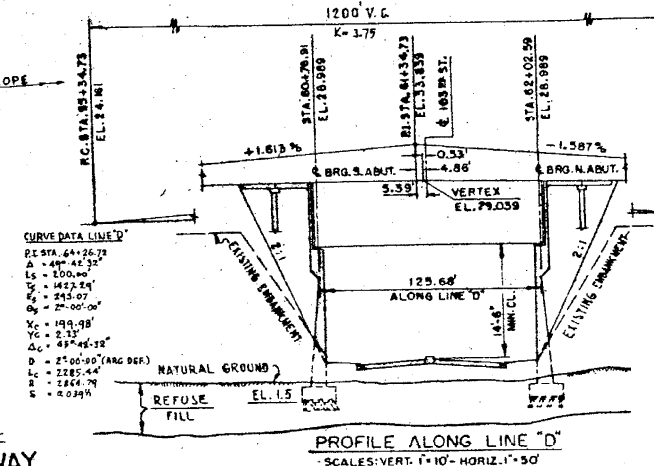
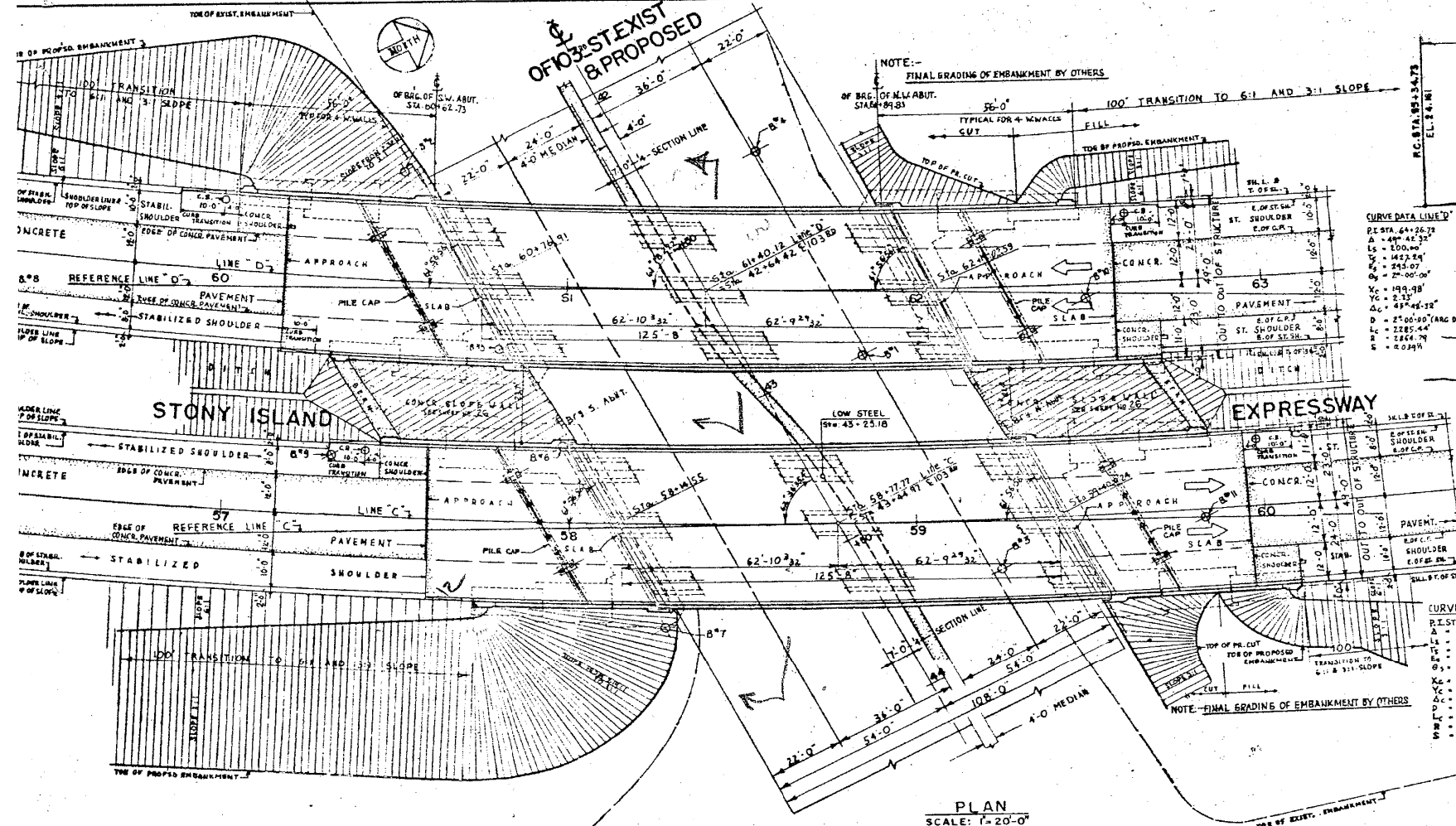


COUNTY PROGRAM		SHEET
ITEM No.	YEAR	No.



**LEGEND**

C.B. - CATCH BASIN  
 E.O.P. - EDGE OF CONCRETE PAVEMENT  
 E.O.P. SH - EDGE OF STABILIZED SHOULDER  
 S.L.S. - SHOULDER LINE'S TOP OF SLOPE  
 B.P. - BOLL POSTING

**NOTE**

FOR GENERAL NOTES SEE SHEET NO. 2  
 FOR LOCATIONS SEE SHEET NO. 4  
 FOR DETAILS OF SUPERSTRUCTURE SEE SHEET NO. 8  
 FOR APPROACH SLAB SEE SHEET NO. 19  
 FOR SOIL BORINGS SEE SHEET NO. 5

**DESIGN DATA:**

DESIGN LOADS: A.A.S.H.O.-HS20-44 AND ALTERNATE EARTH PRESSURE (FLUID) - 40 PCF

DESIGN STRESSES: STRUCTURAL STEEL (A36) - 20,000 P.S.I.  
 REINFORCEMENT BARS - 20,000 P.S.I.  
 CONCRETE (WITHOUT EARTH PRESSURE) 1,200 P.S.I.  
 CONCRETE (WITH EARTH PRESSURE) 1,000 P.S.I.

SUPERSTRUCTURES: TWO SEPARATE 49'-0" WIDE, 8" THICK R.C. DECK SLABS ON STEEL BOX GIRDERS, PROTECTED BY DECK WATERPROOFING.  
 SLOPED CURBS 9" WIDE AND 1'-3" HIGH.  
 HANDRAILS OF ONE FOOT HIGH CONCRETE PARAPET WALLS AND ONE ELEMENT METAL RAILS.

BEARINGS: ELASTOMERIC NEOPRENE BEARING PADS 10"x24"x3/8", 60 DUROMETER HARDNESS.

SUBSTRUCTURES: R.C. CANTILEVER ABUTMENTS AND RETAINING WALLS ON TIMBER PILES.

TRAFFIC: ROADWAY WIDTH: EACH ROADWAY SHALL BE 24 FEET WIDE WITH A 12 FOOT SHOULDER ON THE RIGHT AND AN 11 FOOT SHOULDER ON THE LEFT; THE SHOULDER WIDTHS TO BE CARRIED THROUGH THE STRUCTURES.

DESIGN DESIGNATION EXPRESSWAY 3800 (88), FR-3 - (C.R.P.C.C-20)  
 ADTT: SOUTH BOUND - 3800 - VEHICLES  
 NORTH BOUND - 3800 - VEHICLES  
 DESIGN SPEED - 60 M.P.H.

DESIGN DESIGNATION 103RD STREET 2025 (88), TS-3-5.60 - (P.C.C-20)  
 DESIGN SPEED - 40 M.P.H.

AASHO 1969 STANDARD SPECIFICATIONS  
 STATE OF ILLINOIS STANDARD SPECIFICATIONS FOR ROAD AND BRIDGE CONSTRUCTION ADOPTED AUGUST 1, 1968 & AS AMENDED TO DATE.  
 AMERICAN WELDING SOCIETY SPECIFICATIONS FOR WELDED HIGHWAY AND RAILWAY BRIDGES 1968, AS AMENDED TO DATE.

**NOTE**

SEE SPECIAL PROVISIONS FOR TRAFFIC ROUTING PROCEDURE DURING ERECTION OF GIRDERS

DEPARTMENT OF HIGHWAYS		COOK COUNTY, ILLINOIS	
GEORGE W. DUNNE PRESIDENT BOARD OF COMMISSIONERS	THOMAS G. COTTS SUPERINTENDENT OF HIGHWAYS		
GENERAL PLAN			
STONY ISLAND EXPRESSWAY GRADE SEPARATION OVER 103RD STREET			
COMPUTED BY J. PASINSKI	PROJECT E.B.U. 046-461		
CHECKED BY J. PASINSKI	SUBMITTED BY J. PASINSKI		
DRAWN BY J. PASINSKI	STRUCTURAL DESIGN ENGINEER		
CHECKED BY J. PASINSKI	CHIEF ENGINEER OF DESIGN		
EXAMINED BY J. PASINSKI	SECTION NUMBER 122	Sheet No. 3	Total Sheets 34
		Scale 1/4" = 1'-0"	Sheet No. 34

REVISIONS		
DATE	BY	DESCRIPTION
9.10.10	J.P.	AASHTO & STATE SPECS

2:55:08 PM

3/29/2013

S:\1072\_05\_CADD\Structure\11\_S\0162441\_2442\_CADD\_Sheet\1062441-2442-60J12-018-F.V01.dgn

BOWMAN, BARRETT & ASSOCIATES INC.  
 CONSULTING ENGINEERS  
 Chicago, Illinois  
 312.228.0100  
 www.bbainc.com

USER NAME =	DESIGNED -	REVISED -
PLOT SCALE =	CHECKED - BAK	REVISED -
PLOT DATE = 03/29/2013	DRAWN -	REVISED -
	CHECKED -	REVISED -

STATE OF ILLINOIS  
 DEPARTMENT OF TRANSPORTATION

EXISTING PLANS (FOR INFORMATION ONLY)  
 STRUCTURE NOS. 016-2441 & 016-2442

SHEET NO. S-17 OF S-31 SHEETS

F.A.I. R.E.	SECTION	COUNTY	TOTAL SHEETS	SHEET NO.
94	2012-059-BR	COOK	631	573
CONTRACT NO. 60J12				
ILLINOIS FED. AID PROJECT				