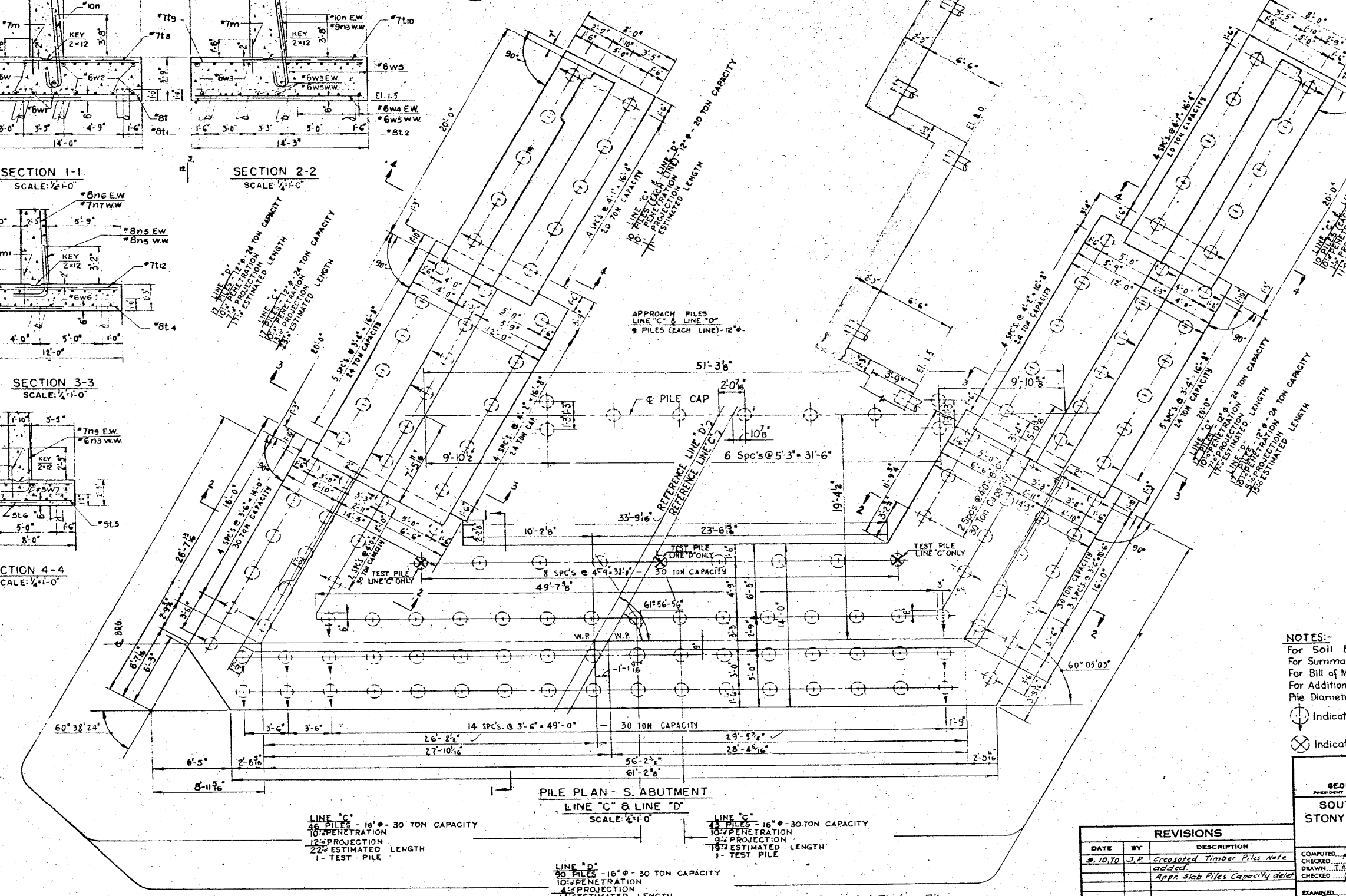
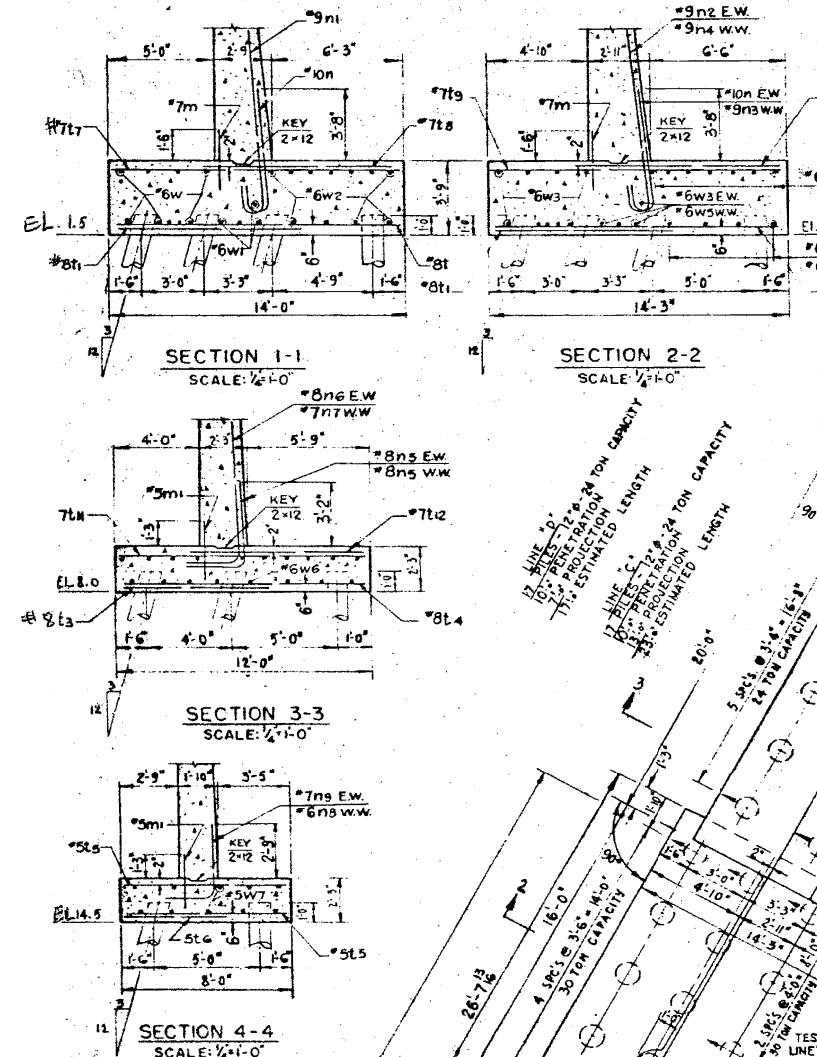


COUNTY PROGRAM		SHEET
ITEM No.	YEAR	No.



APPROACH PILES
LINE "C" & LINE "D"
9 PILES (EACH LINE) - 12'-0"

PILE PLAN - S. ABUTMENT
LINE "C" & LINE "D"
SCALE: 1/4"=1'-0"

LINE "C"
16 PILES - 16" - 30 TON CAPACITY
10'-0" PENETRATION
12'-0" PROJECTION
22'-0" ESTIMATED LENGTH
1 - TEST PILE

LINE "D"
16 PILES - 16" - 30 TON CAPACITY
10'-0" PENETRATION
9'-0" PROJECTION
19'-0" ESTIMATED LENGTH
1 - TEST PILE

Note: All Piles are Creosoted Timber Piles.

- NOTES:-
For Soil Borings see Sheet No.5
For Summary of Quantities see Sht.No.2
For Bill of Material (Class "X" Concrete & Re-Bars see Sht #11)
For Additional Dimensions see Sht #12
Pile Diameter Shown Is Minimum.
- ⊙ Indicates Battered Pile.
 - ⊗ Indicates Test Pile.

REVISIONS		
DATE	BY	DESCRIPTION
9.10.10	J.P.	Creosoted Timber Piles Note added.
		Appr Slab Piles Capacity deleted.

DEPARTMENT OF HIGHWAYS
COOK COUNTY, ILLINOIS

GEORGE W. DUNNE
PRESIDENT BOARD OF COMMISSIONERS

THOMAS G. COTS
SUPERINTENDENT OF HIGHWAYS

SOUTH ABUTMENTS-FOOTING AND PILES
STONY ISLAND EXPRESSWAY GRADE SEPARATION
OVER
103RD STREET

PROJECT: EBU: 246(44)
SUBMITTED: 12/18/10

COMPUTED: J.P. [Signature]
CHECKED: J.P. [Signature]
DRAWN: T. [Signature]
CHECKED: J.P. [Signature]

EXAMINED: [Signature] 10/3/10
CHIEF ENGINEER OF DESIGN

SECTION NUMBER: 174-15152-CF
176-15152-CF

Sheet No. 10
Total Sheets 34

2:55:33 PM

3/29/2013

S:\1072_05_CADD\Structure\1072_05_CADD_Sheets\016241-2442-CADD_Sheet\1016241-2442-60J12-022-F105.dgn

BOWMAN, BARRETT & ASSOCIATES INC.
CONSULTING ENGINEERS
Chicago, Illinois
312.228.0100
www.bbainc.com

USER NAME =	DESIGNED -	REVISED -
PLOT SCALE =	CHECKED - BAK	REVISED -
PLOT DATE = 03/29/2013	DRAWN -	REVISED -
	CHECKED -	REVISED -

STATE OF ILLINOIS
DEPARTMENT OF TRANSPORTATION

EXISTING PLANS (FOR INFORMATION ONLY)
STRUCTURE NOS. 016-2441 & 016-2442

SHEET NO. S-22 OF S-31 SHEETS

F.A.I. RTE.	SECTION	COUNTY	TOTAL SHEETS	SHEET NO.
94	2012-059-BR	COOK	631	578
CONTRACT NO. 60J12				

ILLINOIS FED. AID PROJECT