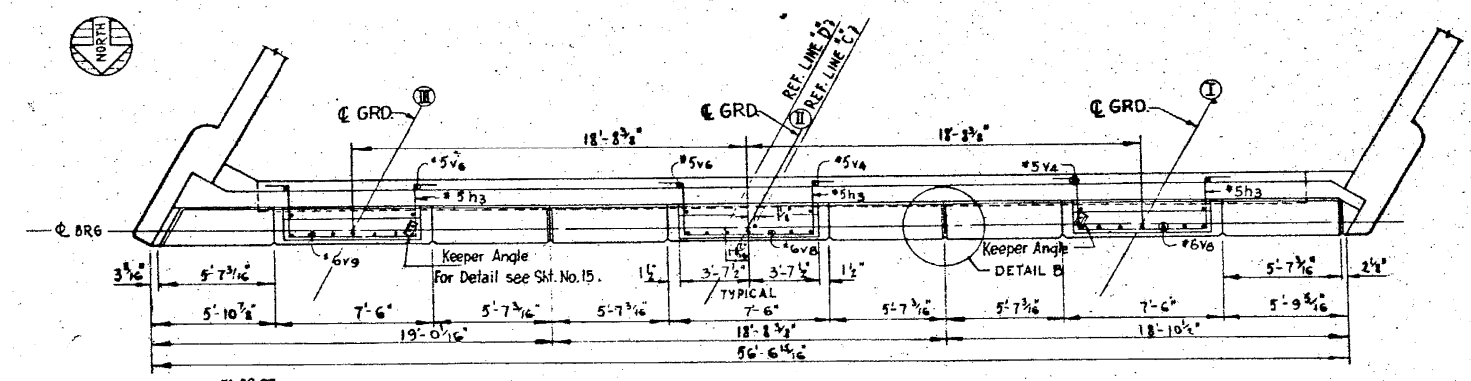
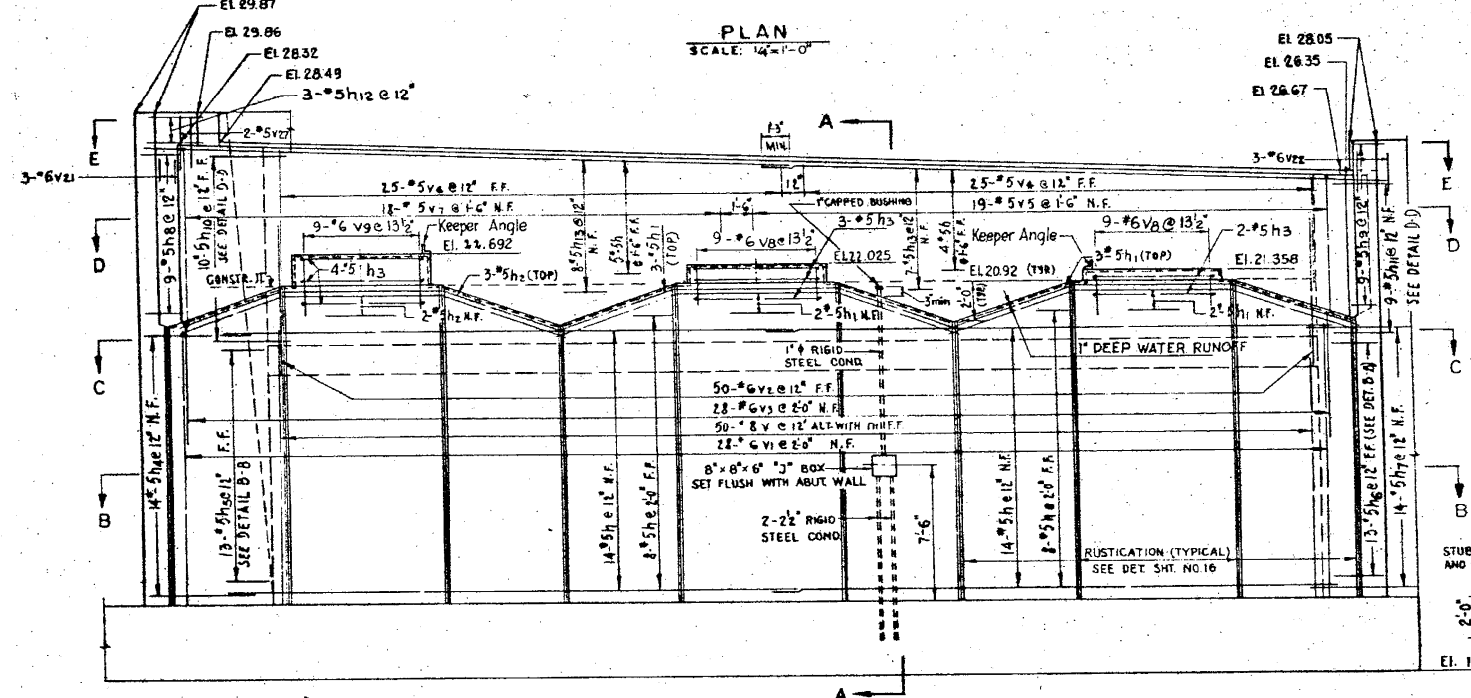


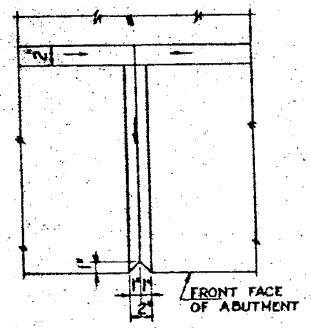
COUNTY PROGRAM		SHEET
ITEM No.	YEAR	No.



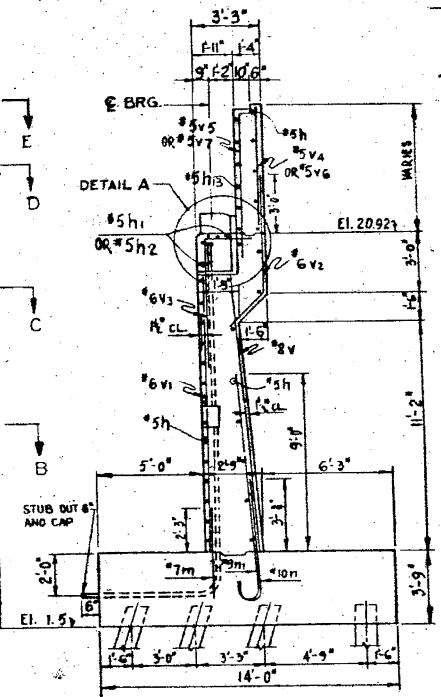
PLAN
SCALE: 1/4"=1'-0"



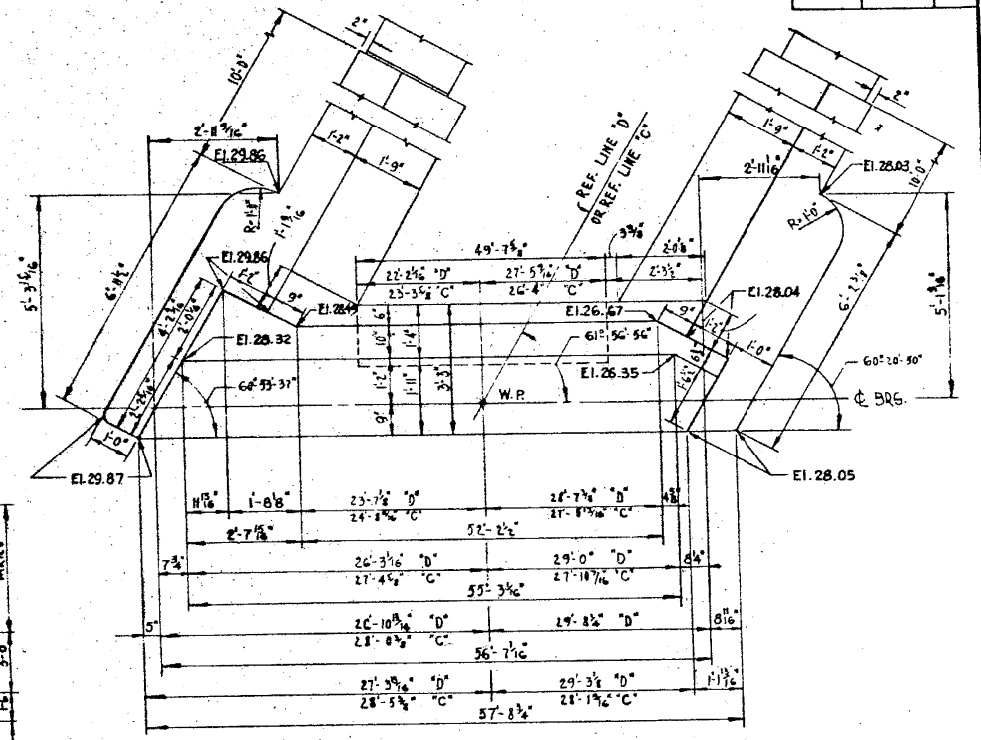
ELEVATION



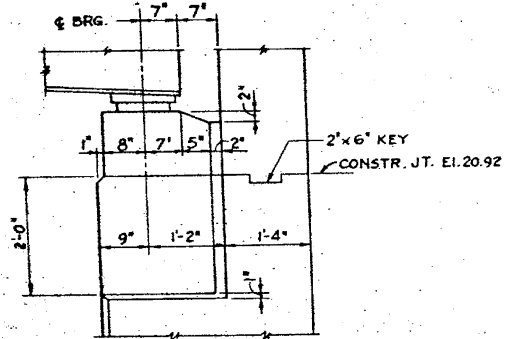
DETAIL-B
FRONT FACE OF ABUTMENT



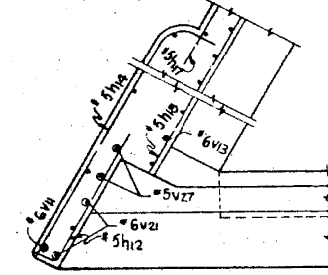
SECTION A-A
SCALE: 1/4"=1'-0"



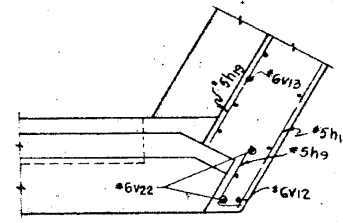
TOP PLAN DIMENSIONS & ELEVATIONS
FOR LINE "C" & LINE "D"



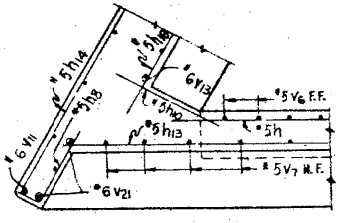
DETAIL-A
Showing concrete pad and water runoff



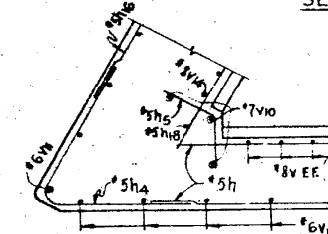
SECTION E-E



SECTION D-D



SECTION B-B



SECTION C-C

NOTES:-
For Wing Wall Details See Sht. No. 16
For Bill Of Material See Sht. No. 16
Work This Sheet With Sheet No. 16.

DEPARTMENT OF HIGHWAYS COOK COUNTY, ILLINOIS		THOMAS G. COTS SUPERINTENDENT OF HIGHWAYS	
SOUTH ABUTMENTS - TOP PLAN AND ELEVATION STONY ISLAND EXPRESSWAY GRADE SEPARATION OVER 103 RD STREET			
COMPUTED	J.P.	PROJECT	EBU-246(44)
CHECKED	T. J. ...	SUBMITTED	28 Oct 1973
DRAWN	T. J. ...	DESIGNED	T. J. ...
CHECKED	T. J. ...	STRUCTURAL DESIGN ENGINEER	
EXAMINED	H. J. ...	SECTION NUMBER	122
CHIEF ENGINEER OF DESIGN		SECTION	174-1515.2-C.F. 176-1515.2-C.F.
		TOTAL SHEETS	34
		SHEET NO.	580
		CONTRACT NO. 60J12	

REVISIONS		
DATE	BY	DESCRIPTION
9.10.1970	J.P.	Keeper Angles added
		Rads dimension changed

2:55:42 PM

3/29/2013

S:\1072_05_CADD\Structure\1 SN 0162441_2442\CADD Sheets\0162441-2442-60J12-024-F107.dgn

BOWMAN, BARRETT & ASSOCIATES INC.
CONSULTING ENGINEERS
Chicago, Illinois
312.228.0100
www.bbainc.com

USER NAME =	DESIGNED -	REVISED -
PLOT SCALE =	CHECKED - BAK	REVISED -
PLOT DATE = 03/29/2013	DRAWN -	REVISED -
	CHECKED -	REVISED -

STATE OF ILLINOIS
DEPARTMENT OF TRANSPORTATION

EXISTING PLANS (FOR INFORMATION ONLY)
STRUCTURE NOS. 016-2441 & 016-2442

SHEET NO. S-24 OF S-31 SHEETS

F.A.I. RTE.	SECTION	COUNTY	TOTAL SHEETS	SHEET NO.
94	2012-059-BR	COOK	631	580
CONTRACT NO. 60J12				
ILLINOIS FED. AID PROJECT				