

BAR SCHEDULE (FOR ONE ABUT ONLY)

MARK	NO	SIZE	LGTH	SKETCH	TYPE	A	B	C	D	E	J	G	H	K
t	39	#8	13'-6"											
t	66	#8	8'-3"											
t	26	#8	13'-9"											
t	25	#8	6'-6"											
t	46	#8	11'-6"											
t	68	#5	7'-6"											
t	16	#5	5'-0"											
t	26	#7	13'-6"											
t	32	#7	9'-3"											
t	18	#7	13'-9"											
t	16	#7	9'-6"											
t	28	#7	11'-6"											
t	33	#7	8'-3"											
t	13	#7	10'-9"											
t	14	#5	11'-8"											
t	12	#5	7'-8"											
t	21	#8	5'-9"											
w	18	#6	32'-0"											
w	4	#6	54'-0"											
w	11	#6	39'-0"											
w	22	#6	20'-0"											
w	4	#6	11'-0"											
w	22	#6	15'-6"											
w	36	#6	20'-9"											
w	20	#5	20'-0"											
m	54	#7	3'-6"											
m	36	#5	3'-9"											
n	63	#10	7'-4"											
n	48	#9	12'-6"											
n	13	#9	14'-2"											
n	12	#9	7'-4"											
n	11	#9	11'-8"											
n	38	#8	6'-4"											0'-3"
n	20	#8	9'-11"											0'-6"
n	20	#7	8'-2"											0'-4"
n	20	#7	4'-9"											
n	20	#6	4'-7"											0'-6"
n	108	#6	10'-0"											
p	8	#8	25'-0"											
p	4	#8	30'-0"											
p	8	#8	19'-5"											1'-9" 5/16"
p	20	#8	4'-8"											
s	44	#4	5'-8"											0'-3"
s	36	#4	4'-2"											0'-3"
s	10	#4	8'-6"											0'-3"
u	16	#4	3'-8"											
u	16	#4	2'-10"											

BILL OF MATERIAL (FOR BOTH NORTH ABUTS)

CLASS "X" CONCRETE	475.2 Cu. Yds.
REINFORCEMENT BARS	52 230 Lbs.

NOTES: - For Location of Piles see Sht. No. 13 N. Abut. Pile Caps Quantities included in this Bill of Material.

REVISIONS

DATE	BY	DESCRIPTION

DEPARTMENT OF HIGHWAYS
 COOK COUNTY, ILLINOIS

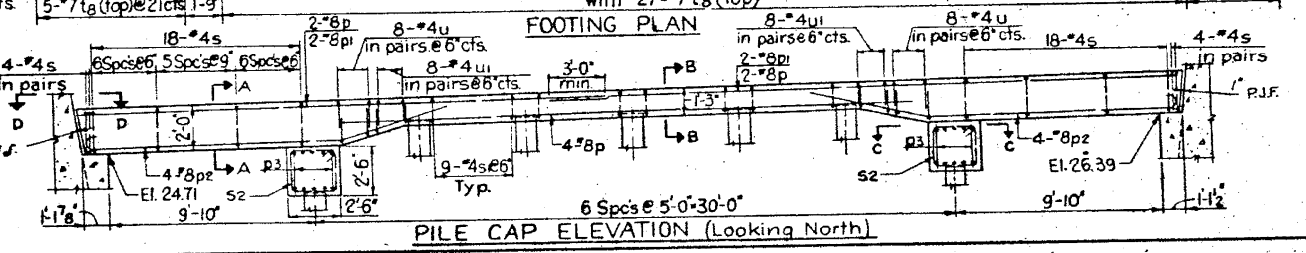
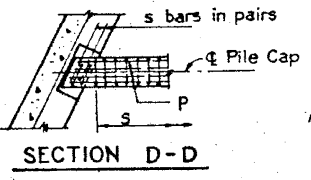
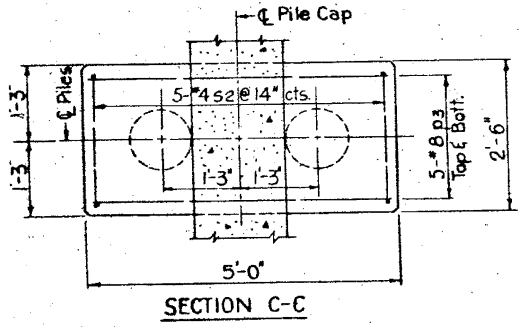
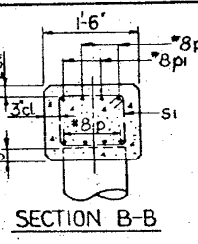
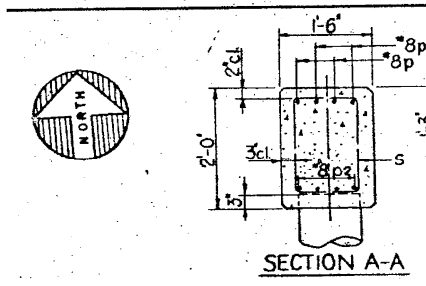
GEORGE W. DUNNE
 PRESIDENT BOARD OF COMMISSIONERS

THOMAS G. COTS
 SUPERINTENDENT OF HIGHWAYS

**NORTH ABUTMENTS-FOOTING REINFORCEMENT
 STONY ISLAND EXPRESSWAY GRADE SEPARATION
 OVER
 103RD STREET**

COMPUTED: [Signature] PROJECT: E.B.U. 246 (44)
 CHECKED: [Signature] SUBMITTED: [Signature]
 DRAWN: [Signature]
 CHECKED: [Signature]

EXAMINED: [Signature] SECTION NUMBER: 174-1562-CF
 CHIEF ENGINEER OF DESIGN 122 176-15152-CF



25551 PM

3/29/2013

SA:1072_05_CADD/STRUCTURE/EN/SN_016241_2442_CADD Sheet 16 of 24 CADD Sheet 16 of 24 2442-6612-026-F105.dgn

BOWMAN, BARRETT & ASSOCIATES INC.
 CONSULTING ENGINEERS
 Chicago, Illinois
 312.228.0100
 www.bbainc.com

USER NAME =	DESIGNED -	REVISED -
PLOT SCALE =	CHECKED - BAK	REVISED -
PLOT DATE = 03/29/2013	DRAWN -	REVISED -
	CHECKED -	REVISED -

STATE OF ILLINOIS
 DEPARTMENT OF TRANSPORTATION

EXISTING PLANS (FOR INFORMATION ONLY)
 STRUCTURE NOS. 016-2441 & 016-2442

SHEET NO. S-26 OF S-31 SHEETS

F.A.I. RTE.	SECTION	COUNTY	TOTAL SHEETS	SHEET NO.
94	2012-059-BR	COOK	631	582

CONTRACT NO. 60J12

ILLINOIS FED. AID PROJECT