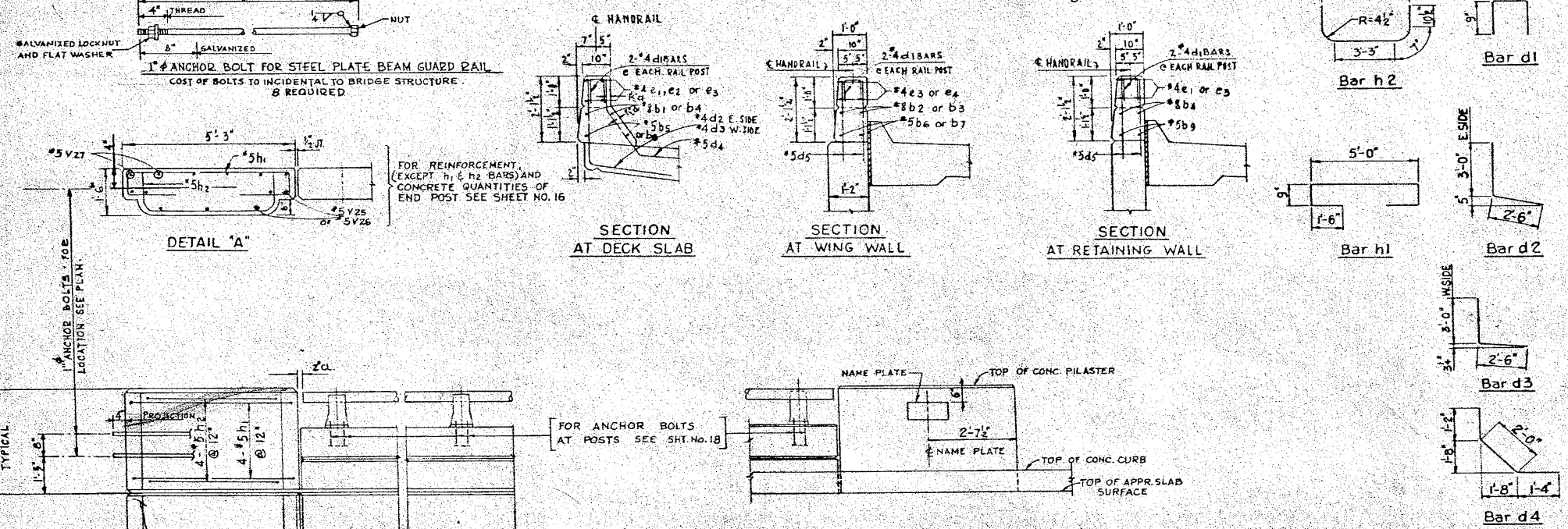


**PLAN OF PARAPET AND HANDRAIL
LINE 'C' AND LINE 'D'**
SCALE: 1/8"=1'-0"



PARAPET BAR SCHEDULE FOR LINE 'C' & LINE 'D'

| MARK | NUMBERS | LINE 'C' | LINE 'D' | TOTAL | SIZE | LENGTH | SKETCH | LOCATION |
|------|---------|----------|----------|-------|--------|--------|---|----------|
| b1 | 8 | 8 | 16 | *8 | 33'-9" | --- | Deck Panels B,D & C East Side | |
| b2 | 4 | 4 | 8 | *8 | 12'-6" | --- | Wing Wall Panels E | |
| b3 | 4 | 4 | 8 | *8 | 14'-6" | --- | Wing Wall Panels C | |
| b4 | 16 | 16 | 32 | *8 | 34'-0" | --- | Deck Pan. B & D West Side - Ret. Wall Panels A & B | |
| b5 | 8 | 8 | 16 | *5 | 33'-4" | --- | Deck Panels B,D & C East Side | |
| b6 | 4 | 4 | 8 | *5 | 12'-7" | --- | Wing Wall Panels E | |
| b7 | 4 | 4 | 8 | *5 | 14'-6" | --- | Wing Wall Panels C | |
| b8 | 8 | 8 | 16 | *5 | 33'-6" | --- | Deck Pan. B & D West Side | |
| b9 | 8 | 8 | 16 | *5 | 34'-5" | --- | Retaining Walls Panels A & B | |
| e1 | 56 | 56 | 112 | *4 | 19'-9" | --- | Deck Panels B - Retaining Wall Panels B | |
| e2 | 12 | 12 | 24 | *4 | 14'-9" | --- | Deck Panels D | |
| e3 | 28 | 28 | 56 | *4 | 14'-6" | --- | Deck Pan. C - Wing Wall Panels C & Ret. Wall Panels A | |
| e4 | 8 | 8 | 16 | *4 | 12'-6" | --- | Wing Wall Panels E | |
| d1 | 104 | 104 | 208 | *4 | 2'-1" | --- | Each Rail Post | |
| d2 | 136 | 136 | 272 | *4 | 5'-6" | --- | Deck Panels B,D & C - East Side | |
| d3 | 137 | 137 | 274 | *4 | 5'-6" | --- | Deck Panels D & B - West Side | |
| d4 | 273 | 273 | 546 | *5 | 4'-6" | --- | Deck Panels B,D & C | |
| d5 | 400 | 400 | 800 | *5 | 3'-6" | --- | Wing & Retaining Wall Panels A,B,C & E | |
| h1 | 16 | 16 | 32 | *5 | 9'-6" | --- | End Post | |
| h2 | 16 | 16 | 32 | *5 | 6'-2" | --- | End Post | |

BILL OF MATERIAL FOR LINE 'C' & 'D'

| | | |
|--------------------|--------|---------|
| CLASS 'X' CONCRETE | 76 | CU.YDS |
| REINFORCEMENT BARS | 17,530 | LBS |
| ALUMINUM RAILING | 907 | LIN.FT. |
| NAME PLATE | 2 | EACH |
| PROTECTIVE COAT | 341.7 | SQ.YDS |
| STRUCTURAL STEEL | 75 | LBS |

REVISIONS

| DATE | BY | DESCRIPTION |
|-----------|------|-------------------------------|
| 9.10.1970 | J.P. | Guard Rail Anchor Bolts added |

DEPARTMENT OF HIGHWAYS
COOK COUNTY, ILLINOIS

GEORGE W. DUNNE
PRESIDENT BOARD OF COMMISSIONERS

THOMAS G. COTS
PRESIDENT DEPARTMENT OF HIGHWAYS

**PLAN OF HANDRAIL
STONY ISLAND EXPRESSWAY GRADE SEPARATION
OVER
103RD STREET**

COMPUTED: PASIUSKI
CHECKED: PASIUSKI
DRAWN: T. G. COTS
CHECKED: T. G. COTS

PROJECT: EBU-246(44)
SUBMITTED: 12/22/70
APPROVED: 1/9/70
STRUCTURAL DESIGN ENGINEER: J. PASIUSKI

EXAMINED: 1/11/70
SCALE: AS SHOWN

SECTION NUMBER: 174-1512-CF
SHEET NO.: 17
TOTAL SHEETS: 34
DRAWING NO.: S.I-151-5

**VIEW A-A
(NAME PLATE LOCATION)**
SCALE: 1/2"=1'-0"

NOTE: For Detail of Name Plate see Sht. No. 27
For Parapet Joint Detail see Sht. No. 18
For Alum. Railing Detail see Sht. No. 18

256605 PM

3/29/2013

S:\1072_05_CADD\Structure\1 SN 0162441_2442.CADD Sheet 06/24/41-2442-6612-029-F12.dgn

BOWMAN, BARRETT & ASSOCIATES INC.
CONSULTING ENGINEERS
Chicago, Illinois
312.228.0100
www.bbainc.com

| | | |
|------------------------|---------------|-----------|
| USER NAME = | DESIGNED - | REVISED - |
| PLOT SCALE = | CHECKED - BAK | REVISED - |
| PLOT DATE = 03/29/2013 | DRAWN - | REVISED - |
| | CHECKED - | REVISED - |

**STATE OF ILLINOIS
DEPARTMENT OF TRANSPORTATION**

**EXISTING PLANS (FOR INFORMATION ONLY)
STRUCTURE NOS. 016-2441 & 016-2442**

SHEET NO. S-29 OF S-31 SHEETS

| | | | | |
|---------------------------|-------------|--------|--------------|-----------|
| F.A.I. RTE. | SECTION | COUNTY | TOTAL SHEETS | SHEET NO. |
| 94 | 2012-059-BR | COOK | 631 | 585 |
| CONTRACT NO. 60J12 | | | | |
| ILLINOIS FED. AID PROJECT | | | | |