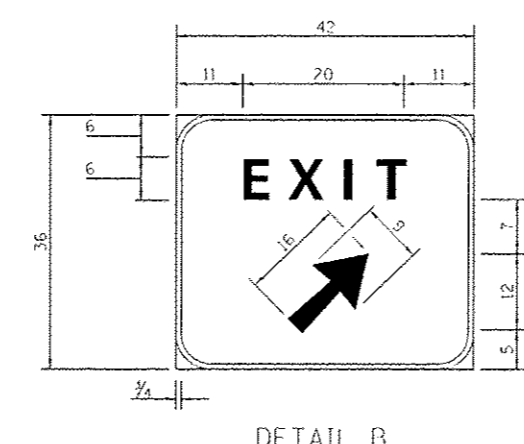
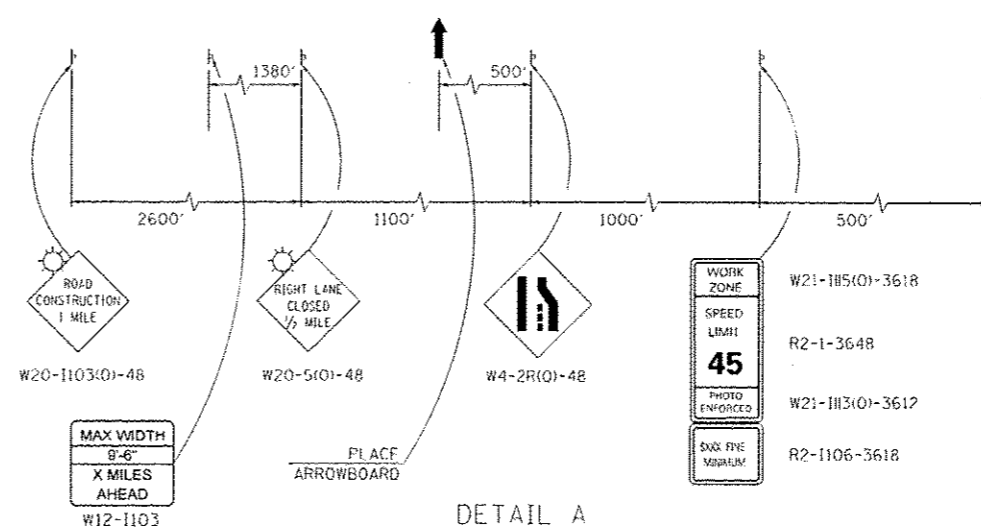
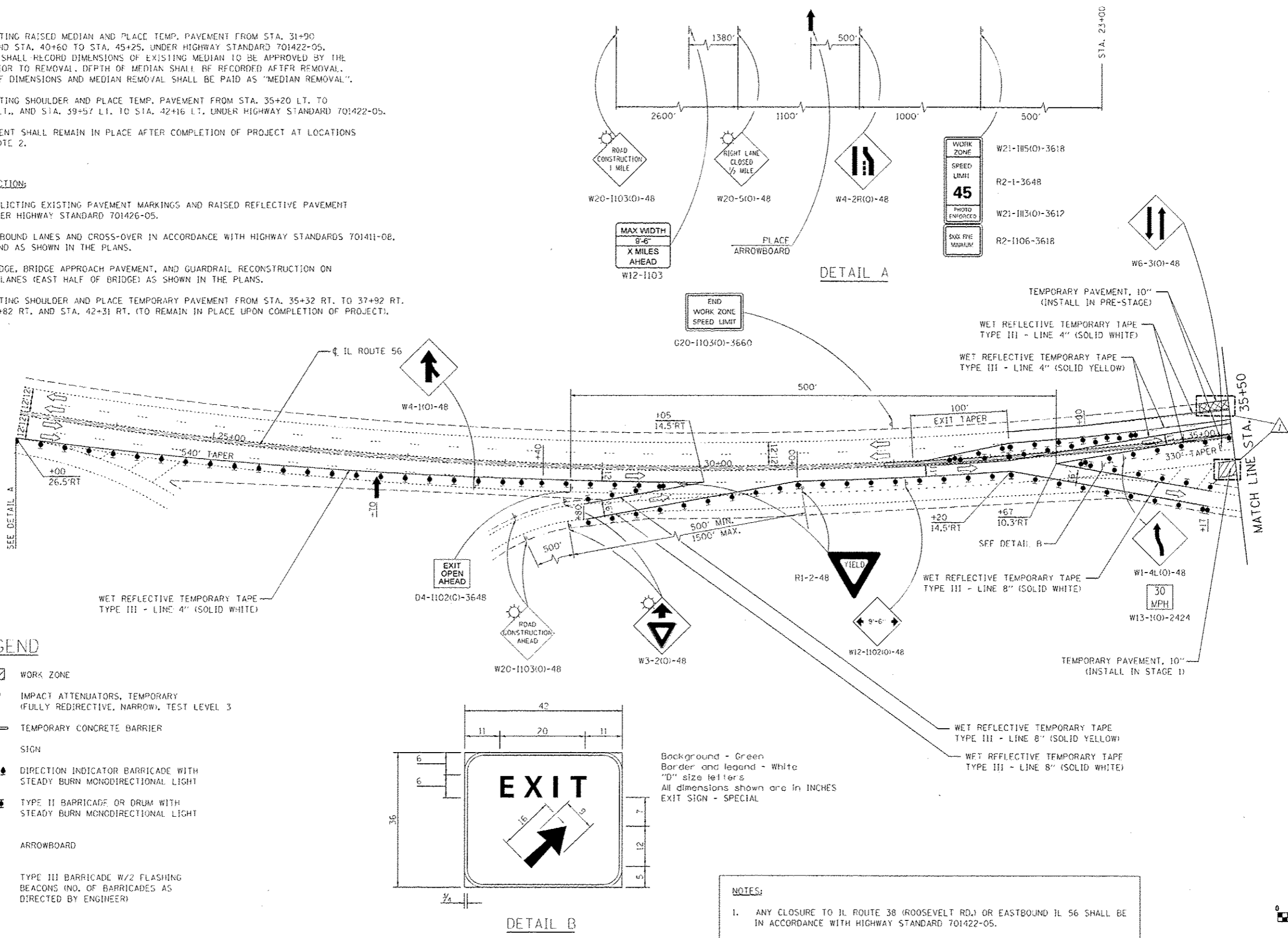


**PRE-STAGE:**

1. REMOVE EXISTING RAISED MEDIAN AND PLACE TEMP. PAVEMENT FROM STA. 31+90 TO 36+90, AND STA. 40+60 TO STA. 45+25, UNDER HIGHWAY STANDARD 701422-05. CONTRACTOR SHALL RECORD DIMENSIONS OF EXISTING MEDIAN TO BE APPROVED BY THE ENGINEER PRIOR TO REMOVAL. DEPTH OF MEDIAN SHALL BE RECORDED AFTER REMOVAL. RECORDING OF DIMENSIONS AND MEDIAN REMOVAL SHALL BE PAID AS "MEDIAN REMOVAL".
2. REMOVE EXISTING SHOULDER AND PLACE TEMP. PAVEMENT FROM STA. 35+20 LT. TO STA. 37+63 LT., AND STA. 39+57 LT. TO STA. 42+16 LT., UNDER HIGHWAY STANDARD 701422-05.
3. TEMP. PAVEMENT SHALL REMAIN IN PLACE AFTER COMPLETION OF PROJECT AT LOCATIONS LISTED IN NOTE 2.

**STAGE 1 CONSTRUCTION:**

1. REMOVE CONFLICTING EXISTING PAVEMENT MARKINGS AND RAISED REFLECTIVE PAVEMENT MARKERS UNDER HIGHWAY STANDARD 701426-05.
2. CLOSE NORTHBOUND LANES AND CROSS-OVER IN ACCORDANCE WITH HIGHWAY STANDARDS 701411-08, 701431-08, AND AS SHOWN IN THE PLANS.
3. PERFORM BRIDGE, BRIDGE APPROACH PAVEMENT, AND GUARDRAIL RECONSTRUCTION ON NORTHBOUND LANES (EAST HALF OF BRIDGE) AS SHOWN IN THE PLANS.
4. REMOVE EXISTING SHOULDER AND PLACE TEMPORARY PAVEMENT FROM STA. 35+32 RT. TO 37+92 RT. AND STA. 39+82 RT. AND STA. 42+31 RT. (TO REMAIN IN PLACE UPON COMPLETION OF PROJECT).



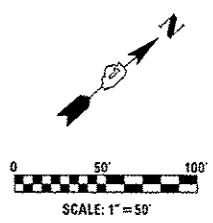
**LEGEND**

- WORK ZONE
- IMPACT ATTENUATORS, TEMPORARY (FULLY REDIRECTIVE, NARROW), TEST LEVEL 3
- TEMPORARY CONCRETE BARRIER
- SIGN
- DIRECTION INDICATOR BARRICADE WITH STEADY BURN MONODIRECTIONAL LIGHT
- TYPE II BARRICADE OR DRUM WITH STEADY BURN MONODIRECTIONAL LIGHT
- ARROWBOARD
- TYPE III BARRICADE W/2 FLASHING BEACONS (NO. OF BARRICADES AS DIRECTED BY ENGINEER)

Background - Green  
 Border and legend - White  
 "D" size letters  
 All dimensions shown are in INCHES  
 EXIT SIGN - SPECIAL

**NOTES:**

1. ANY CLOSURE TO IL ROUTE 38 (ROOSEVELT RD.) OR EASTBOUND IL 56 SHALL BE IN ACCORDANCE WITH HIGHWAY STANDARD 701422-05.



<p><b>LIN ENGINEERING, LTD.</b>                  Consulting Engineers                  Springfield, Illinois</p>	USER NAME - KLSR4	DESIGNED - SEW	REVISED - 5/21/2013 FVL	<b>STATE OF ILLINOIS</b> <b>DEPARTMENT OF TRANSPORTATION</b>	<b>MAINTENANCE OF TRAFFIC - STAGE 1</b> <b>IL 56 (BUTTERFIELD RD.) OVER IL 38 (ROOSEVELT RD.)</b>			F.A.P. R.I.E. 347	SECTION JR-HB-1-1	COUNTY DUPAGE	TOTAL SHEETS 30	SHEET NO. 7	
	PLOT SCALE - 1/4"=1'-0"	CHECKED - SEW	REVISED -		SCALE: 1/4"=50'	SHEET NO. 1 OF 2 SHEETS	STA. 23+00 TO STA. 35+50	CONTRACT NO. 60N77					
	PLOT DATE - 4/2014	DATE - 11/2011	REVISED -		FED. ROAD DIST. NO. 1 (ILLINOIS) FED. AID PROJECT								