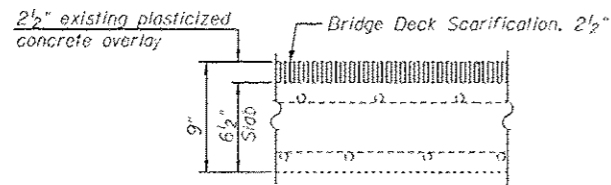


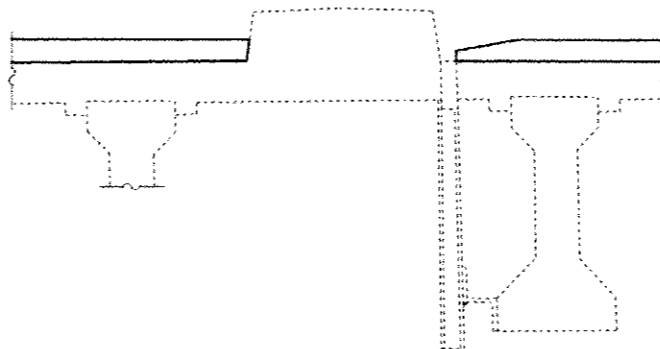
GENERAL NOTES

Reinforcement bars designated (E) shall be epoxy coated.
 Plan dimensions and details relative to existing plans are subject to nominal construction variations. The Contractor shall field verify existing dimensions and details affecting new construction and make necessary approved adjustments prior to construction or ordering of materials. Such variations shall not be cause for additional compensation for a change in scope of the work, however, the Contractor will be paid for the quantity actually furnished at the unit price bid for the work.
 Joint openings shall be adjusted according to Article 520.04 of the Std. Specs. when the concrete is poured at an ambient temperature other than 50° F.
 The existing bearing plate coating contains lead. The Contractor shall take appropriate precautions to deal with the presence of lead on this project.
 All structural steel shall conform to AASHTO Classification M270 Gr. 36 unless otherwise noted.

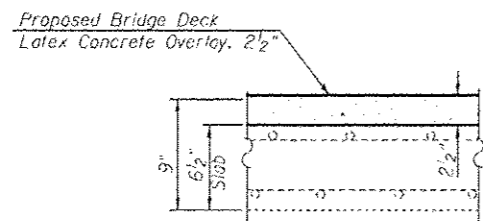
Existing bridge underdeck lighting is present at this location. All existing locations shall be protected and maintained in accordance with the special provision for "PROTECT AND MAINTAIN EXISTING UNDERPASS LUMINAIRE" and as determined by the Engineer.



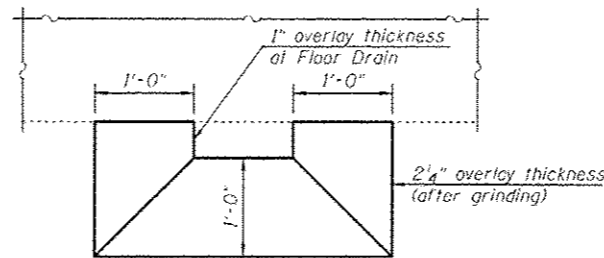
EXISTING BRIDGE DECK CROSS SECTION



DRAIN DETAILS
 (Except at Floor Drains Being Plugged)



PROPOSED BRIDGE DECK CROSS SECTION



OVERLAY AT DRAIN

TOTAL BILL OF MATERIAL

ITEM	UNIT	SUPER	SUB	TOTAL
Furnished Excavation	Cu. Yd.	-	15	15
Bituminous Materials (Prime Coat)	Gallon	71	-	71
Hot-Mix Asphalt Surface Course, Mix "D", N70	Tons	74	-	74
Concrete Removal	Cu. Yd.	104.0	-	104.0
Slope Wall Removal	Sq. Yd.	-	51	51
Protective Shield	Sq. Yd.	379	-	379
Concrete Superstructure	Cu. Yd.	138.8	-	138.8
Bridge Deck Grooving	Sq. Yd.	1159	-	1159
Protective Coat	Sq. Yd.	243	-	243
Reinforcement Bars, Epoxy Coated	Pound	20360	-	20360
Bar Splicers	Each	78	-	78
Slope Wall, 4 inch	Sq. Yd.	-	51	51
Preformed Joint Strip Seal	Foot	143	-	143
Anchor Bolts, 1"	Each	80	-	80
Floor Drains to be Cleaned	Each	8	-	8
Clean & Reseal Relief Joint	Foot	52	-	52
Hot-Mix Asphalt Surface Removal, Variable Depth	Sq. Yd.	707	-	707
Elastomeric Bearing Assembly, Type II (Special)	Each	40	-	40
Approach Slab Removal & Replacement	Sq. Yd.	30	-	30
Jack and Remove Existing Bearings	Each	40	-	40
Bridge Deck Latex Concrete Overlay, 2 1/2"	Sq. Yd.	1155	-	1155
Bridge Deck Scarification, 2 1/2"	Sq. Yd.	1155	-	1155
Structural Repair of Concrete (Depth Equal to or Less Than 5 in.)	Sq. Ft.	-	259	259
Plug Existing Deck Drains	Each	16	-	16
Deck Slab Repair (Full Depth, Type II)	Sq. Yd.	3	-	3
Temporary Shoring and Cribbing	Each	-	3	3
Expansion Bolts, 3/4"	Each	342	-	342