

INDEX OF SHEETS

SHEET NO.	DESCRIPTION
1	TITLE SHEET
2	INDEX OF SHEETS, STATE STANDARDS, & GENERAL NOTES
3-4	SUMMARY OF QUANTITIES
5-14	BRIDGE REPAIR DETAILS - SN 022-0022
15-18	TRAFFIC CONTROL PLANS (STAGE I & II)
19	TRAFFIC STAGING PLAN
20	DETOUR DURING STAGE II
21-22	FINAL PAVEMENT MARKING PLAN
23	BUTT JOINT AND HMA TAPER DETAILS (BD-32)
24	FREEWAY ENTRANCE AND EXIT RAMP (TC-0)
25	TRAFFIC CONTROL AND PROTECTION FOR SIDE ROADS, INTERSECTIONS, AND DRIVEWAYS (TC-10)
26	TYPICAL APPLICATIONS RAISED REFLECTIVE PAVEMENT MARKERS (SNOW-PROOF RESISTANT) (TC-11)
27	TYPICAL PAVEMENT MARKING (TC-13)
27A	TRAFFIC CONTROL DETAILS
28	ARTERIAL ROAD INFORMATION SIGN (TC-22)
28A	DRIVEWAY ENTRANCE SIGNING (TC-26)
29	BRIDGE APPROACH SHOULDER PAVEMENT, STANDARD 2324-5

STATE STANDARDS

STANDARD NO.	DESCRIPTION
701101-03	
701301-04	LANE CLOSURE, 2L, 2W SHORT TIME OPERATIONS
701421-05	LANE CLOSURE, MULTILANE, UNDIVIDED WITH CROSSOVER, FOR SPEEDS 45 MPH TO 55 MPH
701606-08	URBAN LANE CLOSURE, MULTILANE, 2W WITH MOUNTABLE MEDIAN
701901-02	TRAFFIC CONTROL DEVICES
606001-05	
606301-04	
701426-05	

GENERAL NOTES

BEFORE STARTING ANY EXCAVATION, THE CONTRACTOR SHALL CALL "J.U.L.I.E." AT (800) 892-0123 OR 811 FOR FIELD LOCATIONS OF BURIED ELECTRIC, TELEPHONE & GAS UTILITIES. (48 HOUR NOTIFICATION IS REQUIRED).

THE CONTRACTOR SHALL COORDINATE CONSTRUCTION ACTIVITIES WITH UTILITY COMPANIES AND THE CITY OF WEST CHICAGO.

THE CONTRACTOR WILL NOT BE ALLOWED TO SET UP A YARD OR FIELD OFFICE ON STATE PROPERTY WITHOUT WRITTEN PERMISSION FROM THE DEPARTMENT.

BEFORE BEGINNING ANY WORK, THE CONTRACTOR SHALL RETAIN AND RECORD FOR FUTURE REFERENCE, ALL EXISTING PAVEMENT MARKING LINES (AND RAISED REFLECTIVE PAVEMENT MARKERS) IN ORDER THAT THESE LOCATIONS CAN BE RE-ESTABLISHED FOR STRIPPING. EXACT LOCATIONS OF ALL PAVEMENT MARKINGS SHALL BE AS DIRECTED BY THE ENGINEER.

IT SHALL BE THE CONTRACTOR'S RESPONSIBILITY TO VERIFY ALL DIMENSIONS AND CONDITIONS EXISTING IN THE FIELD PRIOR TO CONSTRUCTION AND ORDERING OF MATERIALS.

THE CONTRACTOR SHALL CONTACT THE DISTRICT ONE TRAFFIC CONTROL ARTERIAL SUPERVISOR AT (847)705-4470, A MINIMUM OF 72 HOURS IN ADVANCE OF BEGINNING WORK.

THE ENGINEER SHALL CONTACT DON CHIARUOI AREA TRAFFIC FIELD TECHNICIAN AT (847) 741-9857 A MINIMUM OF TWO (2) WEEKS PRIOR TO THE PLACEMENT OF PERMANENT PAVEMENT MARKINGS.

THESE PLANS HAVE BEEN PREPARED FROM NOTES RECEIVED FROM THE BUREAU OF MAINTENANCE.

THE CONTRACTOR SHALL BE REQUIRED TO PROVIDE ACCESS TO ABUTTING PROPERTY AT ALL TIMES DURING THE CONSTRUCTION OF THIS PROJECT.

DO NOT SCALE PLANS FOR CONSTRUCTION DIMENSIONS.

ALL DAMAGE TO EXISTING PAVEMENT MARKINGS OR RAISED REFLECTIVE PAVEMENT MARKERS OUTSIDE THE REMOVAL LINE SHOWN ON THE PLANS SHALL BE REPLACED AT THE CONTRACTOR'S EXPENSE.

CONCRETE SUPERSTRUCTURE SHALL HAVE A SEVEN DAY MINIMUM CURE.

THE DEPARTMENT HAS DETERMINED THAT IN STREAM WORK IS NOT REQUIRED FOR THE WORK SPECIFIED IN THIS CONTRACT. THE DEPARTMENT HAS NOT OBTAINED A 404 PERMIT. IF THE CONTRACTOR CHOOSES TO USE ACTIVITIES REQUIRING AN USACE 404 PERMIT IT IS THE CONTRACTOR'S RESPONSIBILITY TO SECURE THE PROPER USACE PERMITS.

FILE NAME :	USER NAME : gorangeautob	DESIGNED -	REVISED -	STATE OF ILLINOIS DEPARTMENT OF TRANSPORTATION	INDEX OF SHEETS STATE STANDARDS, GENERAL NOTES	F.A.P. RTE. :	SECTION :	COUNTY :	TOTAL SHEETS :	SHEET NO. :
ci:\pwork\p\dot\gorangeautob\0273151\022311-sht-plan.dgn	022311-sht-plan.dgn	DRAWN -	REVISED -			347	2011-067-1	DUPAGE	29	2
	PLOT SCALE : 100:0000 ' / in.	CHECKED -	REVISED -							
	PLOT DATE : 12/14/2012	DATE -	REVISED -							
						SCALE: SHEET OF SHEETS STA. TO STA.		CONTRACT NO. 60P86		
						ILLINOIS FED. AID PROJECT				

Rev. 6-3-13

Rev.

SUMMARY OF QUANTITIES			URBAN 100% STATE TOTAL QUANTITIES						CONSTRUCTION TYPE CODE 0014						
CODE NO	ITEM	UNIT	TOTAL QUANTITIES												
X7010216	TRAFFIC CONTROL AND PROTECTION, (SPECIAL)	L SLM	1	1											
X7030030	WET REFLECTIVE TEMPORARY TAPE TYPE III, 4 INCH	FOOT	12770	12770											
X7030045	WET REFLECTIVE TEMPORARY TAPE TYPE III, 8 INCH	FOOT	85	85											
X7030050	WET REFLECTIVE TEMPORARY TAPE TYPE III, 12 INCH	FOOT	125	125											
Z0001700	APPROACH SLAB REPAIR (FULL DEPTH)	SQ YD	41	41											
Z0001800	APPROACH SLAB REPAIR (PARTIAL DEPTH)	SQ YD	17	17											
Z0006014	BRIDGE DECK LATEX CONCRETE OVERLAY, 2 1/2 INCHES	SQ YD	885	885											
Z0012130	BRIDGE DECK SCARIFICATION 3/4"	SQ YD	885	885											
Z0012754	STRUCTURAL REPAIR OF CONCRETE (DEPTH EQUAL TO OR LESS THAN 5 INCHES)	SQ FT	50	50											
Z0012755	STRUCTURAL REPAIR OF CONCRETE (DEPTH GREATER THAN 5 INCHES)	SQ FT	2	2											
Z0016002	DECK SLAB REPAIR (FULL DEPTH, TYPE II)	SQ YD	11	11											

SUMMARY OF QUANTITIES			URBAN 100% STATE TOTAL QUANTITIES						CONSTRUCTION TYPE CODE 0014						
CODE NO	ITEM	UNIT	TOTAL QUANTITIES												
Z0016200	DECK SLAB REPAIR (PARTIAL)	SQ YD	47	47											
Z0018500	DRAINAGE STRUCTURES TO BE CLEANED	EACH	4	4											
Z0030850	TEMPORARY INFORMATION SIGNING	SO FT	51.4	51.4											
30300104	AGGREGATE SUBGRADE	SQ YD	230	230											
	IMPROVEMENT, 4"														
31101200	SUBBASE GRANULAR	SQ YD	188	188											
	MATERIAL, TYPE B, 4"														
42001300	PROTECTIVE COAT	SQ YD	231	231											
44000500	COMBINATION CURB AND GUTTER REMOVAL	FOOT	237	237											
44003100	MEDIAN REMOVAL	SQ FT	1686	1686											
60609200	COMBINATION CONCRETE CURB AND GUTTER, TYPE M-6.12	FOOT	237	237											
60618320	CONCRETE MEDIAN SURFACE, 6"	SQ FT	1686	1686											
Z0062450	TEMPORARY PAVEMENT	SQ YD	230	230											

FILE NAME	USER NAME	DESIGNED	REVISED
CDR.../.../...	...	-	-
PLOT SCALE	DATE	CHECKED	REVISED
100/2000	12/14/2012	-	-

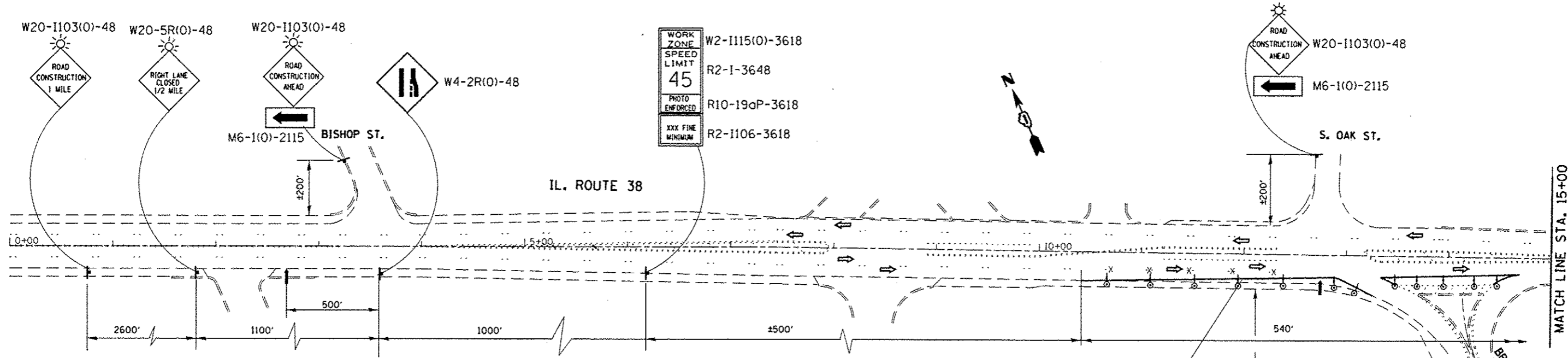
STATE OF ILLINOIS
DEPARTMENT OF TRANSPORTATION

SUMMARY OF QUANTITIES			
SCALE:	SHEET NO.	OF SHEETS	STA. TO STA.

F.A.P. RTE.	SECTION	COUNTY	TOTAL SHEETS	SHEET NO.
347	2011-067-1	DUPAGE	29	4
CONTRACT NO. 60P86				

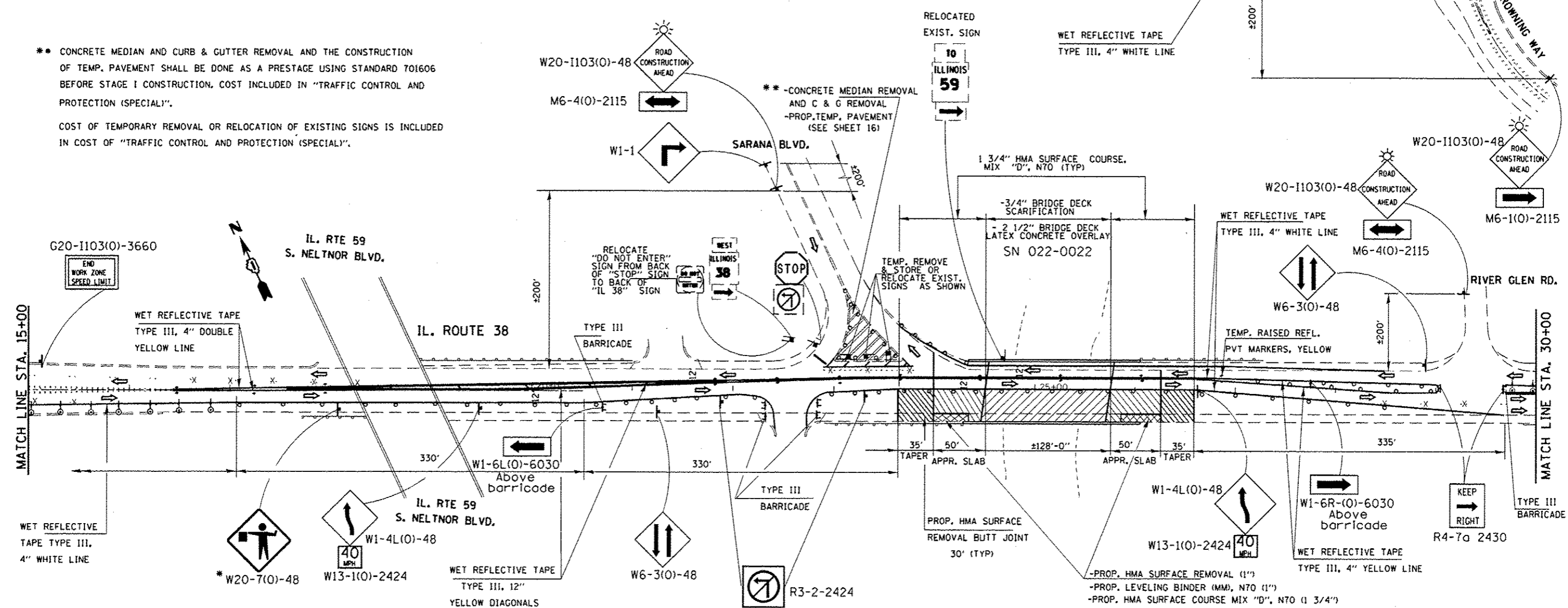
Rev. 6-3-13

Rev.



** CONCRETE MEDIAN AND CURB & GUTTER REMOVAL AND THE CONSTRUCTION OF TEMP. PAVEMENT SHALL BE DONE AS A PRESTAGE USING STANDARD 701606 BEFORE STAGE I CONSTRUCTION. COST INCLUDED IN "TRAFFIC CONTROL AND PROTECTION (SPECIAL)".

COST OF TEMPORARY REMOVAL OR RELOCATION OF EXISTING SIGNS IS INCLUDED IN COST OF "TRAFFIC CONTROL AND PROTECTION (SPECIAL)".

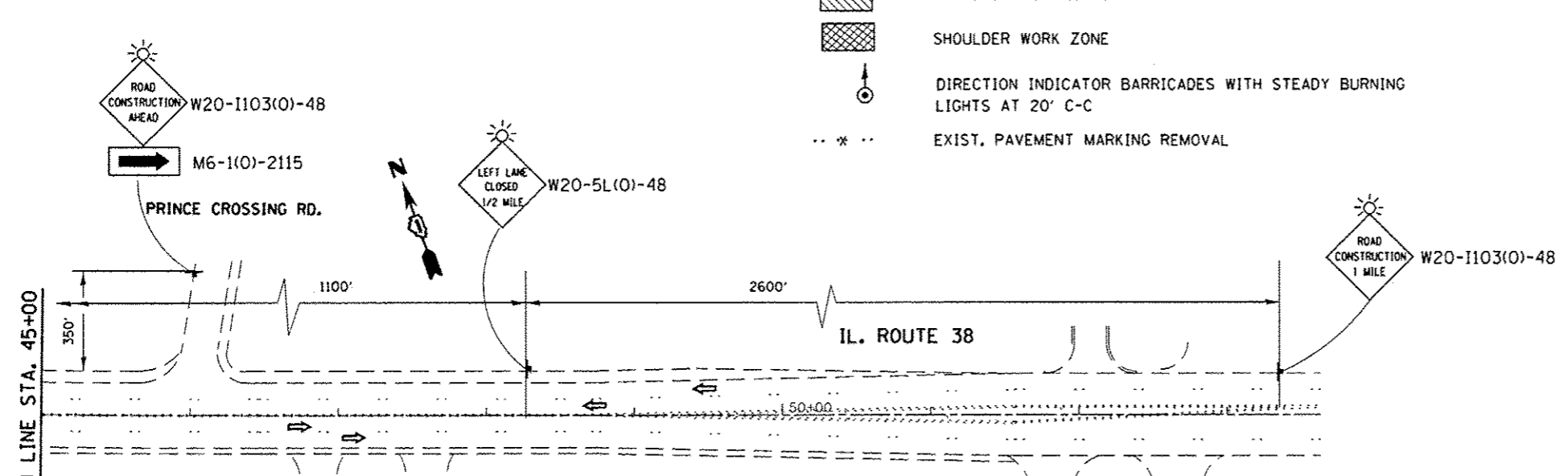
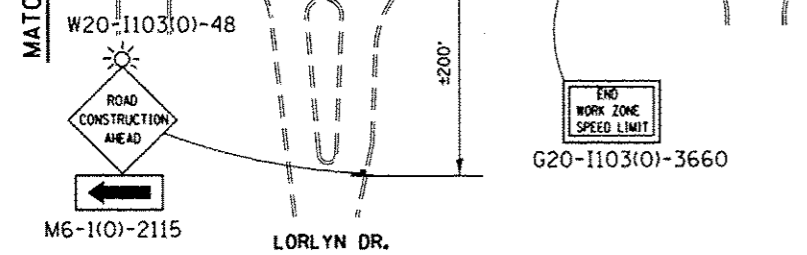
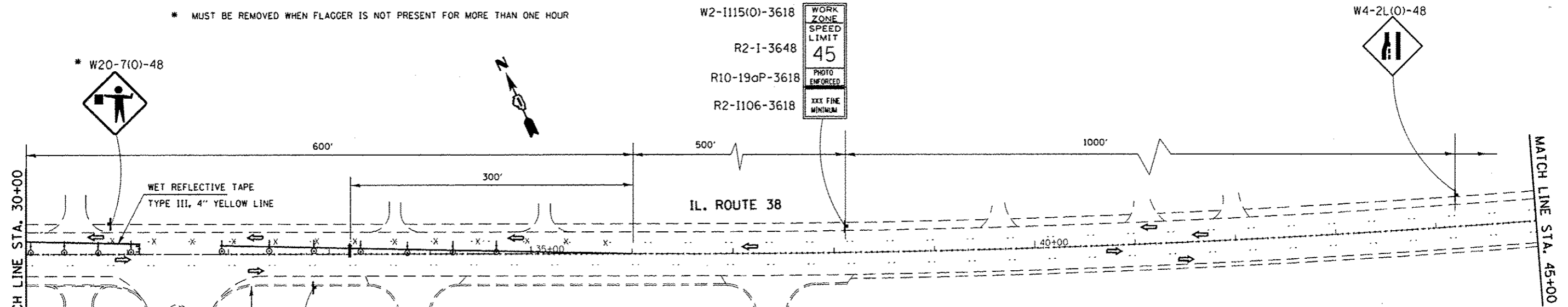


* MUST BE REMOVED WHEN FLAGGER IS NOT PRESENT FOR MORE THAN ONE HOUR

REVISION A.G. 05/22/2013

FILE NAME *	USER NAME * gorenautab	DESIGNED -	REVISED -	STATE OF ILLINOIS DEPARTMENT OF TRANSPORTATION	IL 38 (ROOSEVELT RD) AT WEST BRANCH DUPAGE RIVER TRAFFIC CONTROL PLAN, STAGE I (SN 022-0022)	F.A.P. RTE.	SECTION	COUNTY	TOTAL SHEETS	SHEET NO.	
ei:\p\work\p\widot\gorenautab\d8273151\162311-shrt-plan.dgn	162311-shrt-plan.dgn	DRAWN -	REVISED -			347	2011-067-1	DUPAGE	29	15	
PLOT SCALE * 97.2723' / 1" =		CHECKED -	REVISED -			CONTRACT NO. 60P86					
PLOT DATE * 5/24/2013		DATE -	REVISED -			ILLINOIS FED. AID PROJECT					

* MUST BE REMOVED WHEN FLAGGER IS NOT PRESENT FOR MORE THAN ONE HOUR



LEGEND:

- TEMPORARY RAISED REFL. PVT. MARKERS, YELLOW
- TYPE III BARRICADE WITH FLASHING MONODIRECTIONAL LIGHT
- BRIDGE WORK ZONE
- APPROACH WORK ZONE
- SHOULDER WORK ZONE
- DIRECTION INDICATOR BARRICADES WITH STEADY BURNING LIGHTS AT 20' C-C
- EXIST. PAVEMENT MARKING REMOVAL

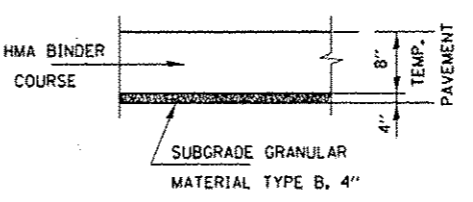
- CONCRETE REMOVAL
- TEMPORARY PAVEMENT
- DRUM WITH STEADY BURNING LIGHT, 20' CTS IN TAPER, 25' IN WEAVE, 50' IN TANGENT
- DIRECTION OF TRAFFIC
- FLASHING ARROW BOARD

HMA MIXTURE REQUIREMENTS	
MIXTURE TYPE	AIR VOIDS & Ndes
APPROACH SLAB	
HOT-MIX ASPHLT SURFACE COURSE, MIX D, N70. (IL 9.5mm)	4% @ 70 GYR
HOT-MIX ASPHALT SHOULDERS	
HOT-MIX ASPHLT SURFACE COURSE, MIX D, N70. (IL 9.5mm)	4% @ 70 GYR
LEVELING BINDER (M M), N70 (IL 9.5 mm)	4% @ 70 GYR
TEMPORARY PAVEMENT	
HOT-MIX ASPHLT BINDER COURSE; IL 19.0, N50; 8"	4% @ 50 GYR

NOTES:

- 1 EXISTING CONFLICTING PAVEMENT MARKINGS SHALL BE REMOVED.
- 2 ALL SIGNS SHALL BE POST MOUNTED IF THE CLOSURE TIME EXCEEDS FOUR HOURS.
- 3 CONTINUOUS REFLECTIVE TEMPORARY PAVEMENT MARKING TAPE SHALL BE PLACED THROUGHOUT THE TAPER AND FOR 250' ALONG SIDE THE WORK AREA WHERE THE CLOSURE TIME IS GREATER THAN FOURTEEN DAYS. THE LEFT EDGE LINE SHALL BE YELLOW AND THE RIGHT EDGE LINE SHALL BE WHITE.

TEMPORARY PAVEMENT DETAIL



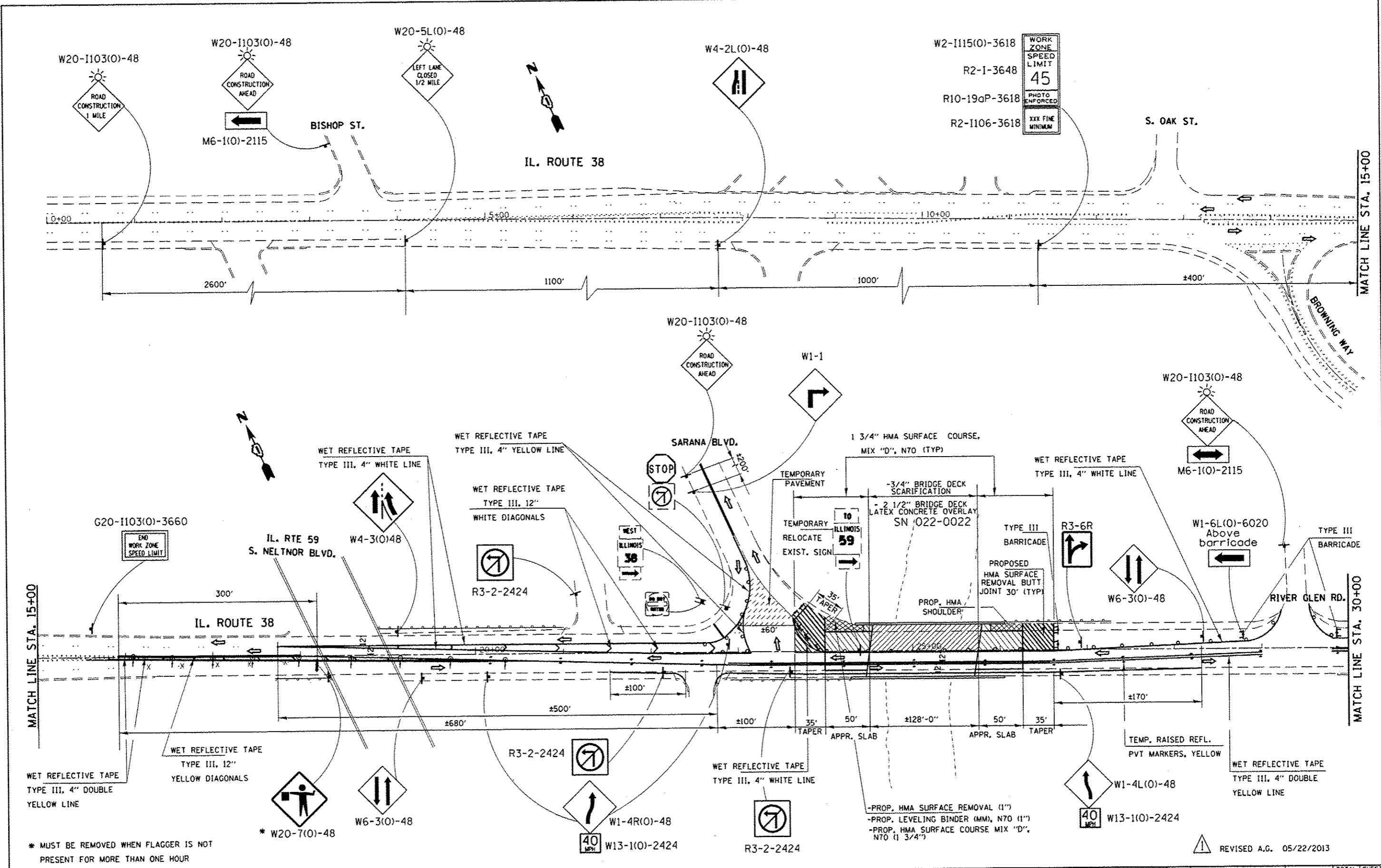
THE UNIT WEIGHT USED TO CALCULATE ALL HMA SURFACE MIXTURE QUANTITIES IS 112 LBS/SQ. YD./IN.

THE "AC" TYPE FOR POLYMERIZED HMA MIXES SHALL BE "SBS / SBR PG 76-22" AND FOR NON-POLYMERIZED HMA THE "AC TYPE" SHALL BE "PG 64 -22" UNLESS MODIFIED BY DISTRICT ONE SPECIAL PROVISIONS.

FOR USE OF RECYCLED MATERIALS SEE SPECIAL PROVISIONS.

REVISD A.G. 05/22/2013

FILE NAME :	USER NAME : gorenautab	DESIGNED -	REVISED -	STATE OF ILLINOIS DEPARTMENT OF TRANSPORTATION	IL 38 (ROOSEVELT RD) AT WEST BRANCH DUPAGE RIVER TRAFFIC CONTROL PLAN, STAGE I (SN 022-0022)	F.A.P. RTE. 347	SECTION 2011-067-I	COUNTY DUPAGE	TOTAL SHEETS 29	SHEET NO. 16		
es:\pr-work\pav\dot\gorenautab\0273151\162311-sht-plan.dgn	PLOT SCALE : 100.0000' / in.	DRAWN -	REVISED -			SCALE:	SHEET NO. OF SHEETS	STA. TO STA.	CONTRACT NO. 60P86			
	PLOT DATE : 5/24/2013	CHECKED -	REVISED -			ILLINOIS FED. AID PROJECT						
		DATE -	REVISED -									



* MUST BE REMOVED WHEN FLAGGER IS NOT PRESENT FOR MORE THAN ONE HOUR

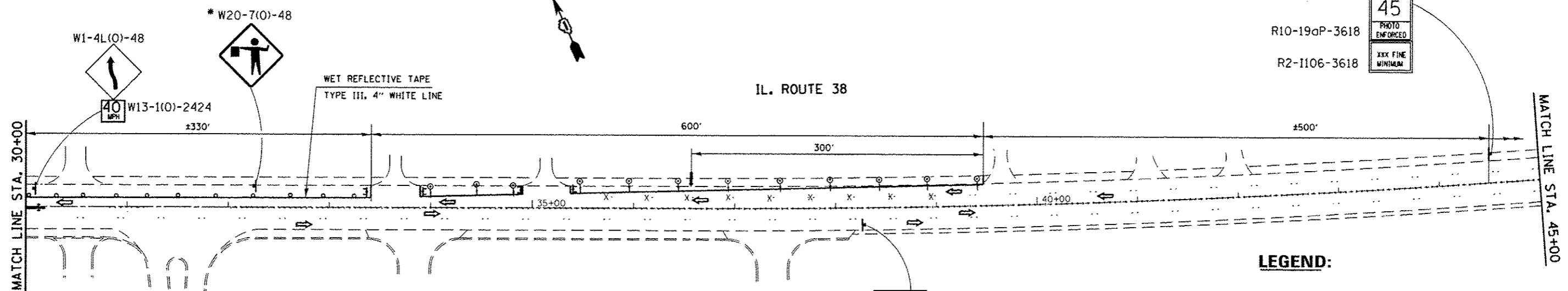
REVISD A.G. 05/22/2013

FILE NAME =	USER NAME = gorenautab	DESIGNED -	REVISED -	STATE OF ILLINOIS DEPARTMENT OF TRANSPORTATION	IL 38 (ROOSEVELT RD) AT WEST BRANCH DUPAGE RIVER TRAFFIC CONTROL PLAN, STAGE II (SN 022-0022)	F.A.P. RTE.	SECTION	COUNTY	TOTAL SHEETS	SHEET NO.	
c:\p\work\p\dot\gorenautab\022311-shi-plan.dgn	022311-shi-plan.dgn	DRAWN -	REVISED -			347	2011-067-1	DUPAGE	29	17	
PLOT SCALE = 1/80,000" = 1" = 1/800'		CHECKED -	REVISED -			CONTRACT NO. 60P86					
PLOT DATE = 5/24/2013		DATE -	REVISED -			ILLINOIS FED. AID PROJECT					
						SCALE:	SHEET NO.	OF	SHEETS	STA.	TO STA.

* MUST BE REMOVED WHEN FLAGGER IS NOT PRESENT FOR MORE THAN ONE HOUR

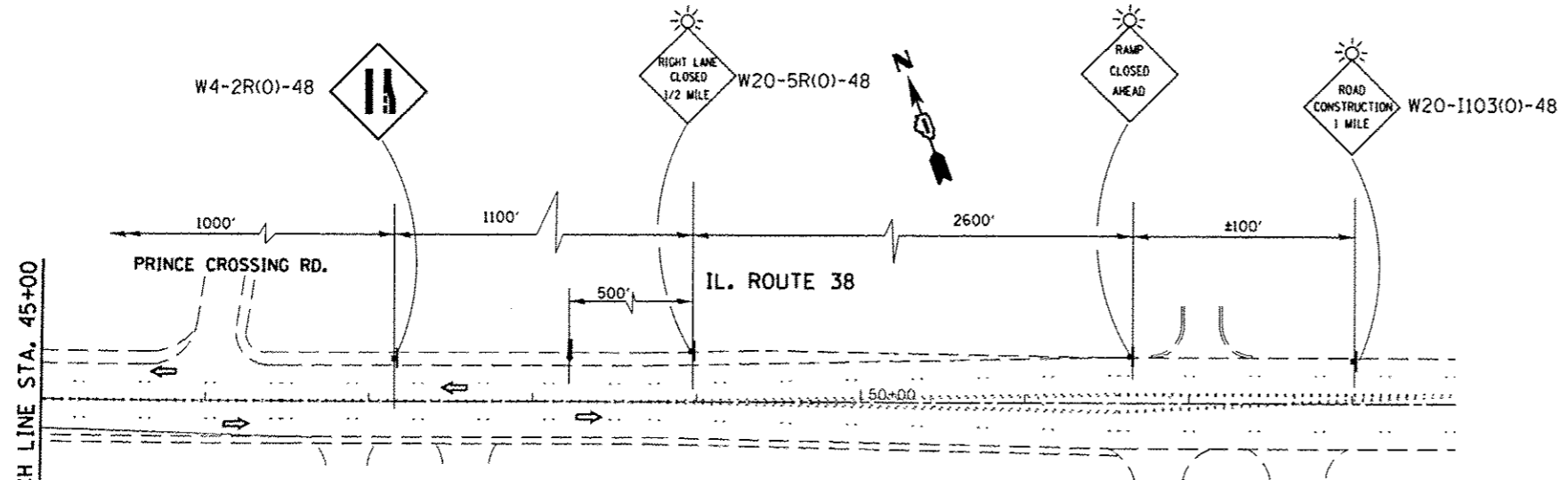
W2-I115(O)-3618
R2-I-3648
R10-19aP-3618
R2-I106-3618

WORK ZONE
SPEED LIMIT
45
PHOTO ENFORCED
XXX FINE MINIMUM



LEGEND:

- TEMPORARY RAISED REFL. PVT. MARKERS, YELLOW
- TYPE III BARRICADE WITH MONODIRECTIONAL LIGHTS
- BRIDGE WORK ZONE
- APPROACH WORK ZONE
- SHOULDER WORK ZONE
- DRUM WITH STEADY BURNING LIGHT, 20' CTS IN TAPER, 25' IN WEAVE, 50' IN TANGENT
- FLASHING ARROW BOARD
- DIRECTION OF TRAFFIC
- CONCRETE REMOVAL
- TEMPORARY PAVEMENT
- DIRECTION INDICATOR BARRICADES WITH STEADY BURNING
- EXIST. PAVEMENT MARKING REMOVAL

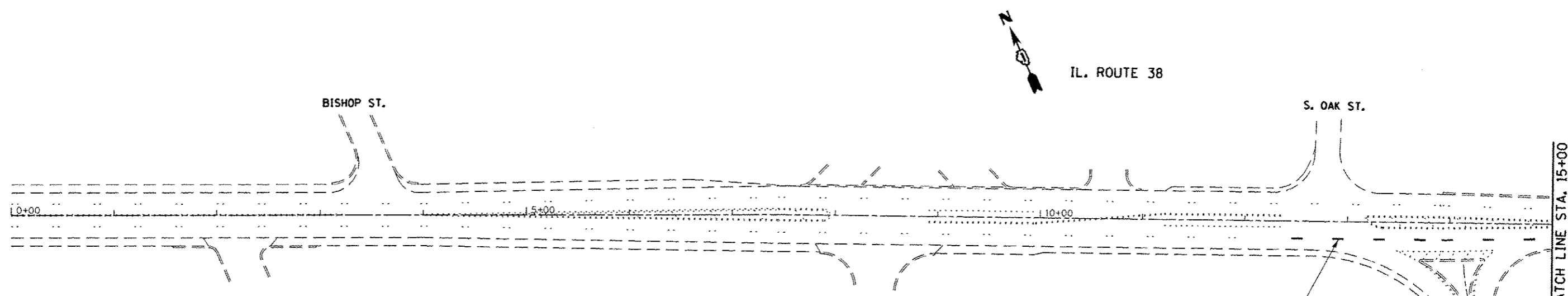


NOTES:

- 1 EXISTING CONFLICTING PAVEMENT MARKINGS SHALL BE REMOVED.
- 2 ALL SIGNS SHALL BE POST MOUNTED IF THE CLOSURE TIME EXCEEDS FOUR HOURS.
- 3 CONTINUOUS REFLECTIVE TEMPORARY PAVEMENT MARKING TAPE SHALL BE PLACED THROUGHOUT THE TAPER AND FOR 250' ALONG SIDE THE WORK AREA WHERE THE CLOSURE TIME IS GREATER THAN FOURTEEN DAYS.
THE LEFT EDGE LINE SHALL BE YELLOW AND THE RIGHT EDGE LINE SHALL BE WHITE.

REVISD A.G. 05/22/2013

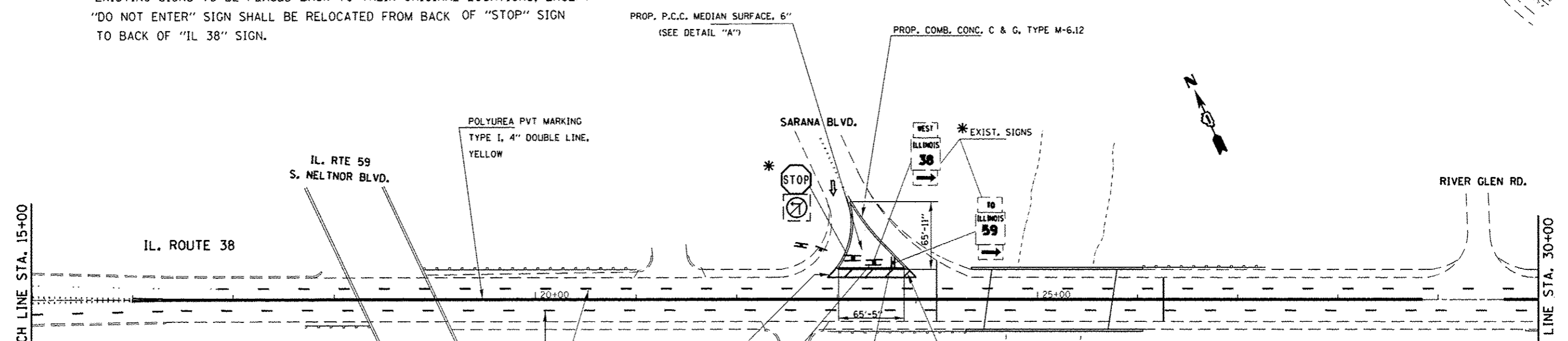
FILE NAME *	USER NAME * gorenautab	DESIGNED -	REVISED -	STATE OF ILLINOIS DEPARTMENT OF TRANSPORTATION	IL 38 (ROOSEVELT RD) AT WEST BRANCH DUPAGE RIVER TRAFFIC CONTROL PLAN, STAGE II (SN 022-0022)	F.A.P. RTE.	SECTION	COUNTY	TOTAL SHEETS	SHEET NO.	
c:\pwwork\sp\dot\gorenautab\d0273101\162311-shc-plan.dgn		DRAWN -	REVISED -			347	2011-067-I	DUPAGE	29	18	
PLOT SCALE = 100.0000 1/2 in.		CHECKED -	REVISED -			CONTRACT NO. 60PB6					
PLOT DATE = 5/24/2013		DATE -	REVISED -			ILLINOIS FED. AID PROJECT					



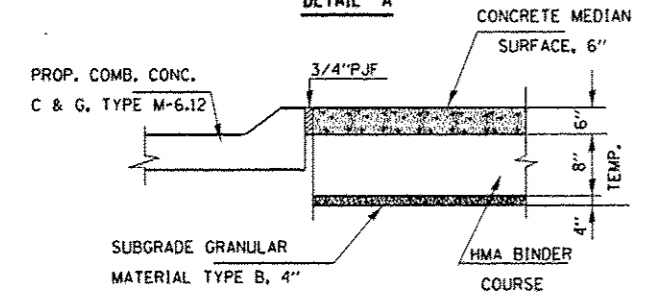
NOTE:
 ISLAND MEDIAN TO BE CONSTRUCTED USING TRAFFIC STANDARD 701606,
 COST INCLUDED IN "TRAFFIC CONTROL AND PROTECTION (SPECIAL)".

* EXISTING SIGNS TO BE PLACED BACK TO THEIR ORIGINAL LOCATIONS, EXCEPT
 "DO NOT ENTER" SIGN SHALL BE RELOCATED FROM BACK OF "STOP" SIGN
 TO BACK OF "IL 38" SIGN.

POLYUREA PVT MARKING
 TYPE I, 4" SKIP-DASH LINE,
 WHITE, 10' LONG, 30' SPACE



DETAIL "A"



PROP. P.C.C. MEDIAN SURFACE, 6"
 (SEE DETAIL "A")

PROP. COMB. CONC. C & G, TYPE M-6.12

POLYUREA PVT MARKING
 TYPE I, 4" DOUBLE LINE,
 YELLOW

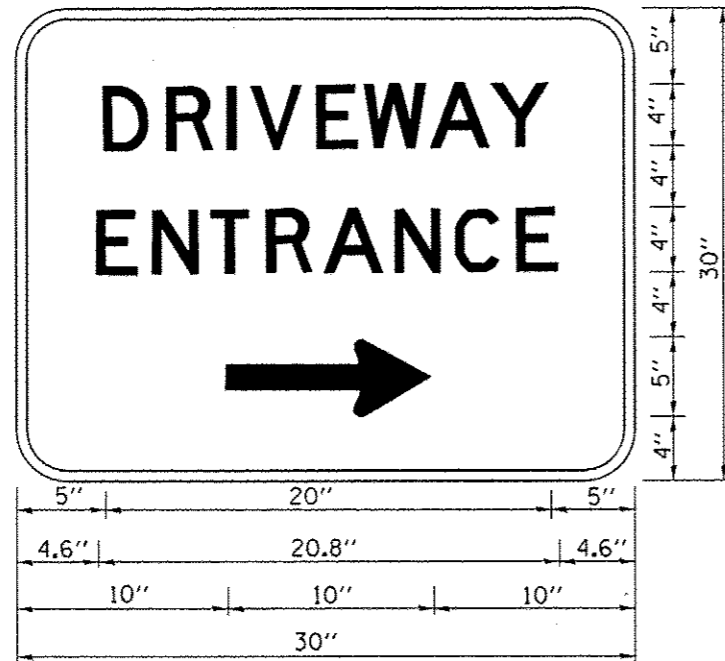
POLYUREA PVT MARKING
 TYPE I, 8" LINE, WHITE

POLYUREA PVT MARKING
 TYPE I, 4" SKIP-DASH LINE,
 WHITE, 10' LONG, 30' SPACE

POLYUREA PVT MARKING
 TYPE I, 12" DIAGONALS,
 WHITE

REVISÉ A.G. 05/22/2013

FILE NAME : c:\pwork\pwidot\gorangautab\027315\027311-shi-plan.dgn	USER NAME : gorangautab	DESIGNED - DRAWN -	REVISED - REVISED -	STATE OF ILLINOIS DEPARTMENT OF TRANSPORTATION	IL 38 (ROOSEVELT RD) AT WEST BRANCH DUPAGE RIVER FINAL PAVEMENT MARKING PLAN (SN 022-0022)	F.A.P. RTE. 347	SECTION 2011-067-1	COUNTY DUPAGE	TOTAL SHEETS 29	SHEET NO. 21		
PLOT SCALE : 1/8" = 100'-0"	PLOT DATE : 5/24/2013	CHECKED - DATE -	REVISED - REVISED -			SCALE:	SHEET NO. OF SHEETS	STA. TO STA.	CONTRACT NO. 60P86 ILLINOIS FED. AID PROJECT			



3.0" RADIUS, 0.5" BORDER, WHITE ON GREEN; REFLECTORIZED
 "DRIVEWAY" D; "ENTRANCE" D; STANDARD ARROW CUSTOM 12.0" x 5.0"

NOTES:

1. HALF OF THE SIGNS WILL REQUIRE A LEFT HAND FACING ARROW.
2. TWO SIGNS SHALL BE USED AT EACH COMMERCIAL ENTRANCE
 PLACED BACK-TO-BACK; ONE WITH A RIGHT HAND ARROW (SHOWN)
 SHALL BE PLACED ON THE NEAR RIGHT SIDE THE DRIVEWAY
 AND ONE WITH A LEFT HAND ARROW SHALL BE PLACED ON THE
 FAR LEFT SIDE OF THE DRIVEWAY.
3. SIGNS TO BE PAID FOR AS ITEM "TEMPORARY INFORMATION SIGNING".

2 ADDED SHEET A.G. 06/03/2013

FILE NAME *	USER NAME * #USER*	DESIGNED -	REVISED - C. JUCIUS 02-15-07	STATE OF ILLINOIS DEPARTMENT OF TRANSPORTATION	DRIVEWAY ENTRANCE SIGNING		F.A.P. RTE.	SECTION	COUNTY	TOTAL SHEETS	SHEET NO.	
#FILEL*		DRAWN -	REVISED -		SCALE: NONE	SHEET NO. 1 OF 1 SHEETS	STA.	347	2011-067-1	DUPAGE	29	28A
		CHECKED -	REVISED -						TC-26			CONTRACT NO. 60P86
		DATE -	REVISED -				TO STA.	FED. ROAD DIST. NO. 1 ILLINOIS FED. AID PROJECT				