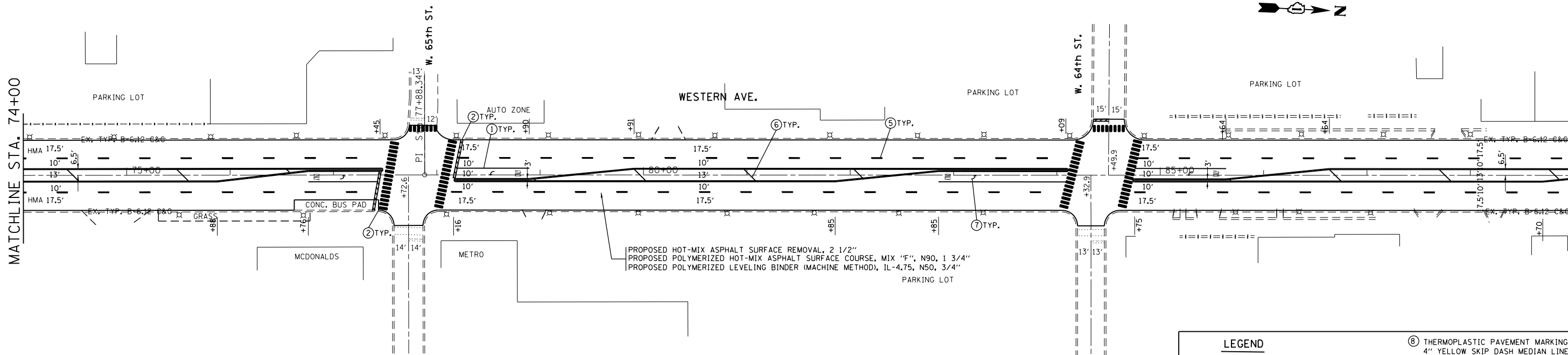


MATCHLINE STA. 74+00

MATCHLINE STA. 89+00



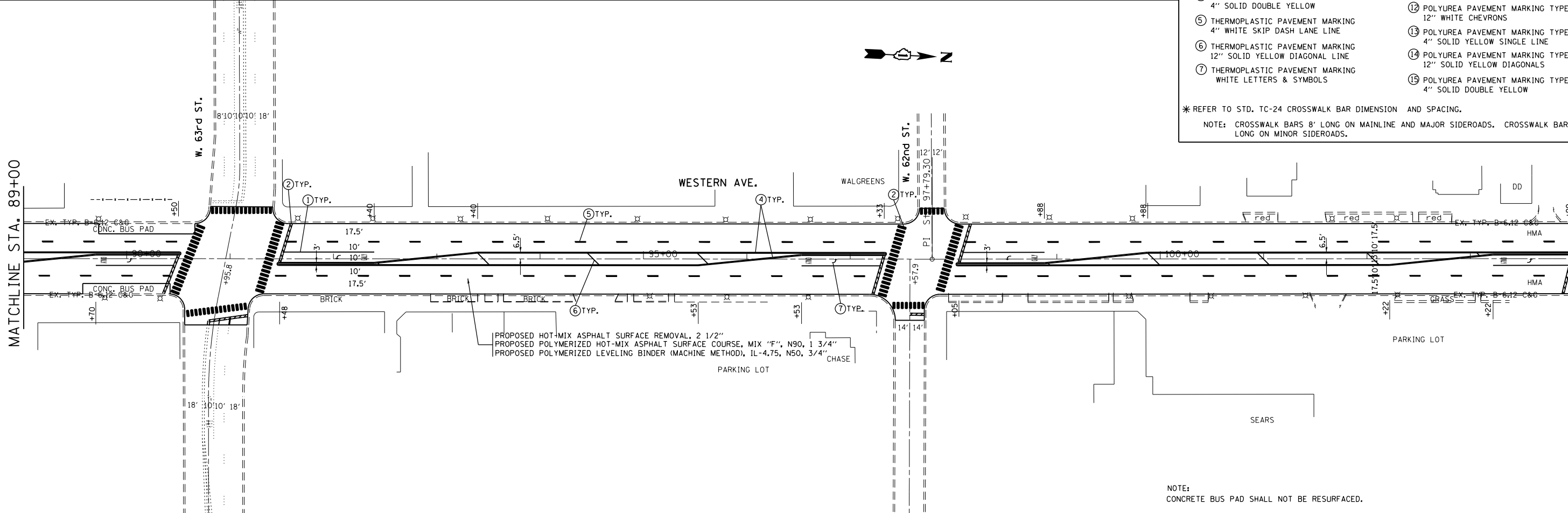
**LEGEND**

① THERMOPLASTIC PAVEMENT MARKING 6" SOLID WHITE LINE	⑧ THERMOPLASTIC PAVEMENT MARKING 4" YELLOW SKIP DASH MEDIAN LINE
② THERMOPLASTIC PAVEMENT MARKING 24" WHITE STOP BAR OR CROSS WALK*	⑨ POLYUREA PAVEMENT MARKING TYPE I 8" WHITE GORE LINE
③ THERMOPLASTIC PAVEMENT MARKING 6" WHITE DOTTED EXTENSION	⑩ POLYUREA PAVEMENT MARKING TYPE I 4" WHITE SKIP DASH LANE LINE
④ THERMOPLASTIC PAVEMENT MARKING 4" SOLID DOUBLE YELLOW	⑪ POLYUREA PAVEMENT MARKING TYPE I 24" WHITE STOP BAR OR CROSS WALK
⑤ THERMOPLASTIC PAVEMENT MARKING 4" WHITE SKIP DASH LANE LINE	⑫ POLYUREA PAVEMENT MARKING TYPE I 12" WHITE CHEVRONS
⑥ THERMOPLASTIC PAVEMENT MARKING 12" SOLID YELLOW DIAGONAL LINE	⑬ POLYUREA PAVEMENT MARKING TYPE I 4" SOLID YELLOW SINGLE LINE
⑦ THERMOPLASTIC PAVEMENT MARKING WHITE LETTERS & SYMBOLS	⑭ POLYUREA PAVEMENT MARKING TYPE I 12" SOLID YELLOW DIAGONALS
	⑮ POLYUREA PAVEMENT MARKING TYPE I 4" SOLID DOUBLE YELLOW

\* REFER TO STD. TC-24 CROSSWALK BAR DIMENSION AND SPACING.  
NOTE: CROSSWALK BARS 8' LONG ON MAINLINE AND MAJOR SIDEROADS. CROSSWALK BARS 6' LONG ON MINOR SIDEROADS.

MATCHLINE STA. 89+00

MATCHLINE STA. 104+00



NOTE:  
CONCRETE BUS PAD SHALL NOT BE RESURFACED.

FILE NAME =	USER NAME = obreueh	DESIGNED -	REVISED -
ei:\p\work\p\dot\obreueh\d0282900\DI04\12-sh1-plan.dgn		DRAWN -	REVISED -
		CHECKED -	REVISED -
		DATE -	REVISED -

**STATE OF ILLINOIS  
DEPARTMENT OF TRANSPORTATION**

**WESTERN AVE. (COLOMBUS DR. TO 34th ST.)**

SCALE: 1"=50' SHEET OF SHEETS STA. 74+00 TO STA. 104+00

F.A.P. RTE.	SECTION	COUNTY	TOTAL SHEETS	SHEET NO.
370	2011-089-RS	COOK	30	10
CONTRACT NO. 60R16				
ILLINOIS FED. AID PROJECT				