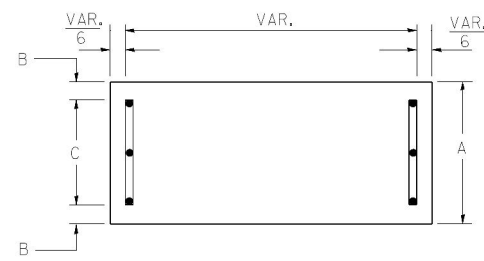
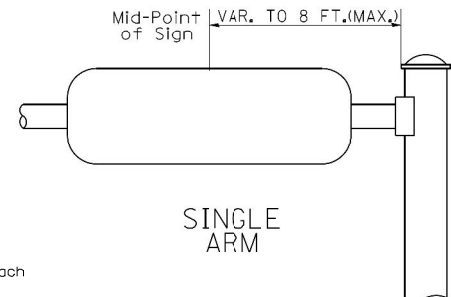


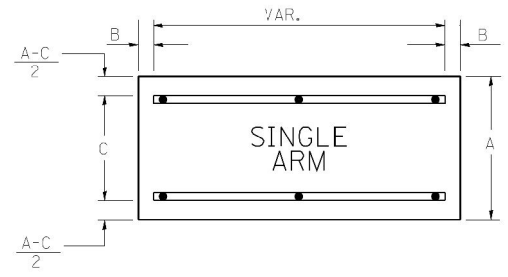
SUPPORTING CHANNELS



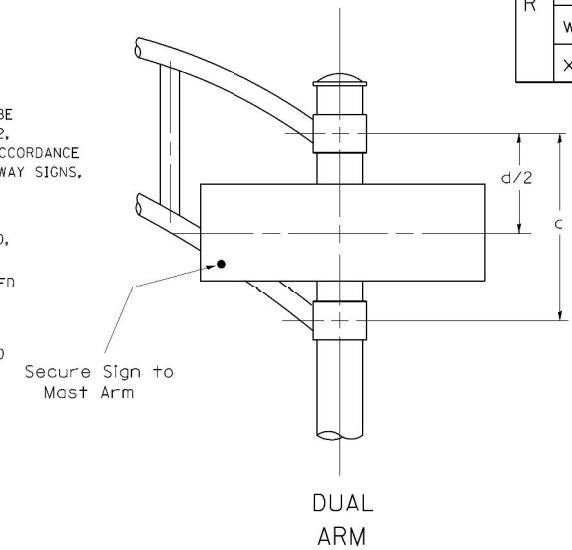
A	B	C
18"	2"	14"



SUPPORTING CHANNELS



A	B	C
18"	2"	12"
30"	2"	22"



SIGNFIX ALUMINUM CHANNEL FRAMING SYSTEM shall be used. See Note #5.

Upper Case To Lower Case
Spacing Chart 8-6 Inch Series "C & D"

FIRST LETTER	SECOND LETTER																							
	ac		de		bh		ik		fl		w		j		st		v		y		x		z	
	C	D	C	D	C	D	C	D	C	D	C	D	C	D	C	D	C	D	C	D	C	D	C	D
A W X	12	14	14	15	12	14	06	10	11	14	06	10	11	14	06	10	11	14	12	14	12	14	16	17
B	14	15	20	21	14	15	11	12	14	15	12	14	12	14	12	14	14	15	14	15				
C E G	14	15	20	21	12	14	06	10	12	14	12	14	14	15	14	15								
D O O R	14	15	20	21	14	15	06	10	12	14	12	14	14	15	14	15								
F	05	06	14	15	06	10	05	06	06	10	06	10	06	10	11	12								
H I M N	20	21	22	24	20	21	14	15	16	17	16	17	20	21	20	21								
J U	20	21	20	21	16	17	14	15	16	17	16	17	16	17	20	21								
K L	11	12	16	17	11	12	05	06	11	12	11	12	11	12	12	14								
P	12	14	14	15	12	14	05	06	11	12	11	12	12	14	12	14								
S	12	14	16	17	12	14	06	10	12	14	12	14	12	14	12	14								
T	11	12	16	17	06	10	06	10	11	12	11	12	11	12	12	14								
V	06	10	14	15	11	12	06	10	12	14	12	14	12	14	12	14								
Y	05	06	14	15	06	10	05	06	05	07	05	06	05	10	11	12								
Z	16	17	22	24	16	17	12	14	16	17	16	17	16	17	20	21								

Lower Case To Lower Case
Spacing Chart 6 Inch Series "C & D"

FIRST LETTER	SECOND LETTER																								
	ac		de		bh		ik		fl		w		j		st		v		y		x		z		
	C	D	C	D	C	D	C	D	C	D	C	D	C	D	C	D	C	D	C	D	C	D	C	D	
adhgi	16	17	22	24	16	17	12	14	14	15	14	15	16	17	16	17									
lmnqu																									
bfkops	12	14	16	17	11	12	05	06	11	12	11	12	12	14	12	14									
ce	12	14	16	17	12	14	06	10	12	14	12	14	12	14	12	14									
r	06	10	12	14	06	10	03	03	05	06	05	06	06	10	06	10									
tz	12	14	16	17	12	14	06	10	11	12	11	12	12	14	12	14									
vy	11	12	14	15	11	12	05	06	06	10	06	10	11	12	11	12									
w	11	12	14	15	11	12	05	06	11	12	11	12	11	12	12	14									
x	12	14	16	17	11	12	05	06	11	12	11	12	11	12	12	14									

Number To Number
Spacing Chart 8 Inch Series "C & D"

FIRST NUMBER	SECOND NUMBER																							
	0		1		2		3		4		5		6		7		8		9					
	C	D	C	D	C	D	C	D	C	D	C	D	C	D	C	D	C	D	C	D				
0 9	16	17	16	17	14	15	12	14	14	15	14	15	16	17	12	14	16	17	16	17				
1	20	21	20	21	20	21	16	17	14	15	20	21	20	21	14	15	20	21	20	21				
2 3 4	14	15	14	15	14	15	12	14	12	14	14	15	14	15	11	12	16	17	14	15				
5	14	15	14	15	14	15	11	12	11	12	14	15	14	15	11	12	14	15	14	15				
6	16	17	14	15	14	15	12	15	12	14	14	15	14	15	11	12	14	15	14	15				
7	12	14	12	14	14	15	12	15	05	06	12	14	14	15	11	12	14	15	12	14				
8	16	17	16	17	14	15	12	15	12	14	14	15	16	17	12	14	16	17	14	15				

EXAMPLE, 2⁽³⁾ DENOTES 3/8

UPPER AND LOWER CASE
LETTER WIDTHS

LETTERS	UPPER AND LOWER CASE LETTER WIDTHS				LETTERS	6 INCH LOWER CASE LETTERS	
	6 INCH UPPER CASE LETTERS		8 INCH UPPER CASE LETTERS			C	D
	SERIES		SERIES				
	C	D	C	D		C	D
A	3 ⁶	5 ⁰	5 ⁰	6 ⁵	a	3 ⁵	4 ²
B	3 ²	4 ⁰	4 ³	5 ³	b	3 ⁵	4 ²
C	3 ²	4 ⁰	4 ³	5 ³	c	3 ⁵	4 ¹
D	3 ²	4 ⁰	4 ³	5 ³	d	3 ⁵	4 ²
E	3 ⁰	3 ⁵	4 ⁰	4 ⁷	e	3 ⁵	4 ²
F	3 ⁰	3 ⁵	4 ⁰	4 ⁷	f	2 ³	2 ⁶
G	3 ²	4 ⁰	4 ³	5 ³	g	3 ⁵	4 ²
H	3 ²	4 ⁰	4 ³	5 ³	h	3 ⁵	4 ²
I	0 ⁷	0 ⁷	1 ¹	1 ²	i	1 ¹	1 ¹
J	3 ⁰	3 ⁶	4 ⁰	5 ⁰	j	2 ⁰	2 ²
K	3 ²	4 ¹	4 ³	5 ⁴	k	3 ⁵	4 ²
L	3 ⁰	3 ⁵	4 ⁰	4 ⁷	l	1 ¹	1 ¹
M	3 ⁷	4 ⁵	5 ¹	6 ¹	m	6 ⁰	7 ⁰
N	3 ²	4 ⁰	4 ³	5 ³	n	3 ⁵	4 ²
O	3 ⁴	4 ²	4 ⁵	5 ⁵	o	3 ⁶	4 ³
P	3 ²	4 ⁰	4 ³	5 ³	p	3 ⁵	4 ²
Q	3 ⁴	4 ²	4 ⁵	5 ⁵	q	3 ⁵	4 ²
R	3 ²	4 ⁰	4 ³	5 ³	r	2 ⁶	3 ²
S	3 ²	4 ⁰	4 ³	5 ³	s	3 ⁶	4 ²
T	3 ⁰	3 ⁵	4 ⁰	4 ⁷	t	2 ⁷	3 ²
U	3 ²	4 ⁰	4 ³	5 ³	u	3 ⁵	4 ²
V	3 ⁵	4 ⁴	4 ⁷	6 ⁰	v	4 ²	4 ⁷
W	4 ⁴	5 ²	6 ⁰	7 ⁰	w	5 ⁵	6 ⁴
X	3 ⁴	4 ⁰	4 ⁵	5 ³	x	4 ⁴	5 ¹
Y	3 ⁶	5 ⁰	5 ⁰	6 ⁶	y	4 ⁶	5 ³
Z	3 ²	4 ⁰	4 ³	5 ³	z	3 ⁶	4 ³

NUMBER	6 INCH SERIES		8 INCH SERIES	
	C	D	C	D
	1	1 ²	1 ⁴	1 ⁵
2	3 ²	4 ⁰	4 ³	5 ³
3	3 ²	4 ⁰	4 ³	5 ³
4	3 ⁵	4 ³	4 ⁷	5 ⁷
5	3 ²	4 ⁰	4 ³	5 ³
6	3 ²	4 ⁰	4 ³	5 ³
7	3 ²	4 ⁰	4 ³	5 ³
8	3 ²	4 ⁰	4 ³	5 ³
9	3 ²	4 ⁰	4 ³	5 ³
0	3 ⁴	4 ²	4 ⁵	5 ⁵

GENERAL NOTES

- WHERE MAST ARM MOUNTED STREET NAME SIGNS ARE SPECIFIED, THE MAST ARM ASSEMBLY AND POLES SHALL BE DESIGNED TO SUPPORT THE LOADINGS CALLED FOR ON STANDARDS 877001, 877002, 877006, 877011 AND 877012, AS APPLICABLE, PLUS TWO (2) SIGN PANELS 2'-6" x 8'-0" MOUNTED AS SHOWN. THE DESIGN SHALL BE IN ACCORDANCE WITH THE REQUIREMENTS OF THE CURRENT "STANDARD SPECIFICATIONS FOR STRUCTURAL SUPPORTS FOR HIGHWAY SIGNS, LUMINAIRES, AND TRAFFIC SIGNALS" AS PUBLISHED BY THE AMERICAN ASSOCIATION OF STATE HIGHWAY AND TRANSPORTATION OFFICIALS FOR 80 M.P.H. WIND VELOCITY.
 - ALL SIGNS SHALL HAVE A WHITE REFLECTORIZED LEGEND AND BORDER ON A GREEN REFLECTORIZED BACKGROUND, TYPE A SHEETING.
 - THE SIGN LENGTH SHOULD BE INCREASED IN 6-INCH INCREMENTS, BUT THE OVERALL LENGTH SHOULD NOT EXCEED 8'-0".
 - ALL BORDERS SHALL BE 3/4" WIDE AND CORNER RADIUS SHALL BE 2-1/4".
 - SIGNFIX ALUMINUM CHANNEL FRAMING SYSTEM SHALL BE USED FOR ALL SIGNS ATTACHED TO SIGNAL POLES AND POSTS. LOCAL SUPPLIERS OF THE SIGNFIX ALUMINUM CHANNEL FRAMING SYSTEM ARE:
* J.O. HERBERT CO. MIDLOTHIAN, VA. * WESTERN REMAC INC. WOODBRIDGE, IL.
- PARTS LISTING:
SIGN CHANNEL PART #HPN053 (MED. CHANNEL)
SIGN SCREWS 1/4" x 14 x 1" H.W.H. #3
SELF TAPPING WITH NEOPRENE WASHER
BRACKETS PART #HPN034 (UNIVERSAL)
CHANNEL CLAMPS WITH STAINLESS STEEL STRAPPING
OTHER BRANDS OF MOUNTING HARDWARE ARE ACCEPTABLE, BASED UPON THE DEPARTMENT'S APPROVAL AND COMPATIBILITY WITH THE CHANNEL/BACKET OF THE ABOVE PRODUCT.

FILE NAME =	USER NAME = bauerdl	DESIGNED - DAG/BCK	REVISED - DAG 10/28/09
as:\pwwork\p\WIDOT\34UERDL\d0128315\1402.dgn		DRAWN - BCK	REVISED -
		CHECKED - DAG/DAD	REVISED -
		DATE - 03-15-09	REVISED -

STATE OF ILLINOIS
DEPARTMENT OF TRANSPORTATION

DISTRICT ONE
MAST ARM MOUNTED STREET NAME SIGNS

SCALE: NONE SHEET NO. 1 OF 1 SHEETS STA. TO STA.

F.A.P. RTE.	SECTION	COUNTY	TOTAL SHEETS	SHEET NO.
338	2012-056TS	DuPAGE	32	27
TS-02		CONTRACT NO.	60V59	
FED. ROAD DIST. NO. 1 ILLINOIS FED. AID PROJECT				