

STATE OF ILLINOIS
DEPARTMENT OF TRANSPORTATION
DIVISION OF HIGHWAYS

PLANS FOR PROPOSED
FEDERAL AID HIGHWAY

VARIOUS LOCATIONS IN JOLIET AND BOLINGBROOK
LIGHT EMITTING DIODE (LED) INSTALLATION

SECTION 2013-003-I

WILL COUNTY
C-91-216-13

F.A.P. RTE. VAR	SECTION 2013-003-I	COUNTY WILL	TOTAL SHEETS 1	SHEET NO. 1
		ILLINOIS	CONTRACT NO. 60W21	

#8944-93
C-91-216-13



LOCATION OF SECTION INDICATED THIS: - [black box] -

SIGNED: Kevin L. Belgrave
KEVIN L. BELGRAVE, EXP. 11/30/2013
DATE: MARCH 28, 2013



STATE OF ILLINOIS
DEPARTMENT OF TRANSPORTATION
DIVISION OF HIGHWAYS

SUBMITTED March 28, 2013
John Frentzen
DEPUTY DIRECTOR OF HIGHWAYS, REGION ENGINEER

20
ENGINEER OF DESIGN AND ENVIRONMENT

20
DIRECTOR OF HIGHWAYS, CHIEF ENGINEER

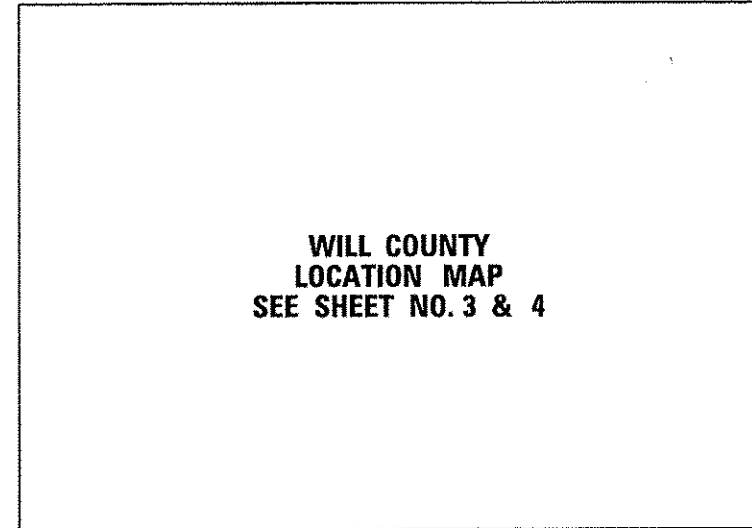
PRINTED BY THE AUTHORITY
OF THE STATE OF ILLINOIS

Rev.

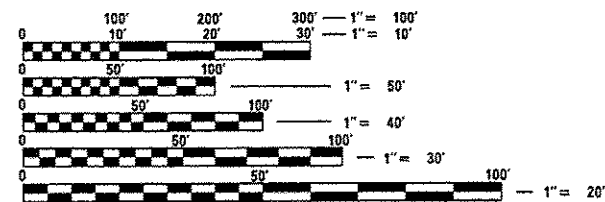
FOR INDEX OF SHEETS, SEE SHEET NO. 2

HIGHWAY STANDARDS

- 701006-04 OFF-ROAD OPERATIONS 2L, 2W, 15' (4.5 m) TO 24" (600 mm) FROM PAVEMENT EDGE
- 701101-03 OFF-ROAD OPERATIONS MULTILANE, 15' (4.5 m) TO 24" (600 mm) FROM PAVEMENT EDGE
- 701701-08 URBAN LANE CLOSURE MULTILANE INTERSECTION
- 701901-02 TRAFFIC CONTROL DEVICES
- 857001-01 STANDARD PHASE DESIGNATION DIAGRAMS AND PHASE SEQUENCES
- 862001-01 UNINTERRUPTABLE POWER SUPPLY (UPS)
- 880006-01 TRAFFIC SIGNAL MOUNTING DETAILS



WILL COUNTY
LOCATION MAP
SEE SHEET NO. 3 & 4



FULL SIZE PLANS HAVE BEEN PREPARED USING STANDARD ENGINEERING SCALES. REDUCED SIZED PLANS WILL NOT CONFORM TO STANDARD SCALES. IN MAKING MEASUREMENTS ON REDUCED PLANS, THE ABOVE SCALES MAY BE USED.

J.U.L.I.E.
JOINT UTILITY LOCATION INFORMATION FOR EXCAVATION
1-800-892-0123
OR 811

DISTRICT 1 - TRAFFIC SIGNAL DESIGN - SUHAD MAHMOUD (847) 705-4420

GHA GEWALT HAMILTON
ASSOCIATES, INC.
850 Forest Edge Drive • Vernon Hills, IL 60061
Consulting Engineers & Surveyors
847-478-9700
FAX: 847-478-9701

CONTRACT NO. 60W21

INDEX OF SHEETS

- 1. TITLE SHEET
- 2. INDEX OF SHEETS AND GENERAL NOTES
- 3.-4. LOCATION MAP
- 5.-7. SUMMARY OF QUANTITIES
- 8.-13. DISTRICT ONE STANDARD TRAFFIC SIGNAL DESIGN DETAILS

TRAFFIC SIGNAL PLANS

PAGE	TS	INTERSECTION NAME
14.	7357	IL 53 (BOLINGBROOK DR) AT BRIARCLIFF ROAD
15.	21590	JOLIET ROAD AT INTERNATIONALE PARKWAY
16.	7651	IL 53 (BOLINGBROOK DR) AT BOUGHTON ROAD
17.	7353	IL 53 (BOLINGBROOK DR) AT ROBINHOOD WAY
18.	7359	IL 53 (BOLINGBROOK DR) AT LEE LANE/NORTHTRIDGE PLAZA
19.	7358	IL 53 (BOLINGBROOK DR) AT CROSSROADS PARKWAY
20.	22508	IL 53 (BOLINGBROOK DR) AT BEACON RIDGE DRIVE
21.	22507	IL 53 (BOLINGBROOK DR) AT LILY CACHE LANE
22.	22505	IL 53 (BOLINGBROOK DR) AT OLD CHICAGO DRIVE
23.	22560	BRIGGS STREET AT WASHINGTON STREET
24.	21925	180 NORTH RAMP AT HOUBOLT AVENUE
25.	21926	180 SOUTH RAMP AT HOUBOLT AVENUE
26.	22557	IL 171 (COLLINS ST) AT COLUMBIA STREET
27.	22556	IL 171 (COLLINS ST) AT OHIO STREET
28.	7509	IL 53 (BROADWAY ST) AT INGALLS AVENUE
29.	7513	IL 53 (BROADWAY ST) AT RUBY STREET
30.	22539	IL 53 (OTTAWA ST) AT CLINTON STREET
31.	22537	IL 53 (OTTAWA ST) AT WASHINGTON STREET
32.	22540	IL 53 (SCOTT ST) AT CLINTON STREET
33.	22538	IL 53 (SCOTT ST) AT VANBUREN STREET
34.	21801	IL 53 (SCOTT ST) AT CLAY STREET
35.	21802	IL 53 (SCOTT ST) AT JACKSON STREET
36.	21800	IL 53 (SCOTT ST) AT OHIO STREET
37.	22524	IL 7 (LARKIN AVE) AT BLACK ROAD
38.	22523	IL 7 (LARKIN AVE) AT GLENWOOD AVENUE
39.	22525	IL 7 (LARKIN AVE) AT INGALLS AVENUE
40.	22521	IL 7 (LARKIN AVE) AT MCDONOUGH STREET
41.	22522	IL 7 (LARKIN AVE) AT SAMS CLUB/WALMART ENTRANCE
42.	7540	IL 7 (LARKIN AVE) AT NORTHTRIDGE PLAZA DRIVE
43.	7508	IL 7 (THEODORE ST) AT RAYNOR AVENUE
44.	22536	US 30 (CASS ST) AT CHICAGO STREET
45.	22552	US 30 (CASS ST) AT HENDERSON AVENUE
46.	22535	US 30 (CASS ST) AT IL 53 (OTTAWA ST)
47.	22534	US 30 (CASS ST) AT JOLIET STREET
48.	21781	US 30 (CASS ST) AT US 6 (COLLINS ST)
49.	21780	US 30 (CASS ST) AT EASTERN AVENUE
50.	21803	US 30 (CASS ST) AT IL 53 (SCOTT ST)
51.	7507	US 30 (PLAINFIELD RD) AT RAYNOR AVENUE/BLACK ROAD
52.	22530	US 30 (JEFFERSON ST) AT CHICAGO AVENUE
53.	22527	US 30 (JEFFERSON ST) AT HICKORY STREET
54.	22529	US 30 (JEFFERSON ST) AT IL 53 (OTTAWA ST)
55.	22531	US 30 (JEFFERSON ST) AT IL 53 (SCOTT ST)
56.	22528	US 30 (JEFFERSON ST) AT JOLIET STREET
57.	22526	US 30 (JEFFERSON ST) AT US 30 (CENTER ST)
58.	21782	US 30 (JEFFERSON ST) AT EASTERN AVENUE
59.	7445	US 30 (LINCOLN HWY/CASS ST) AT WALNUT STREET
60.	22565	US 30 (PLAINFIELD RD) AT INGALLS AVENUE
61.	8809	US 30 (PLAINFIELD RD) AT HENNEPIN DRIVE
62.	8807	US 30 (PLAINFIELD RD) AT ESSINGTON ROAD/MALL LOOP DRIVE
63.	8808	US 30 (PLAINFIELD RD) AT VOYAGER LANE
64.	22533	US 30 (WESTERN AV) AT HICKORY STREET
65.	22532	US 30 (WESTERN AV) AT US 30 (CENTER ST)
66.	22513	US 52 (JEFFERSON ST) AT BARNEY DRIVE
67.	22512	US 52 (JEFFERSON ST) AT CATERPILLAR DRIVE
68.	22510	US 52 (JEFFERSON ST) AT ESSINGTON ROAD
69.	22515	US 52 (JEFFERSON ST) AT HAMMES AVENUE
70.	22509	US 52 (JEFFERSON ST) AT HOUBOLT ROAD
71.	22516	US 52 (JEFFERSON ST) AT IL 7 (LARKIN AV)
72.	22511	US 52 (JEFFERSON ST) AT 129TH INFANTRY DRIVE
73.	22518	US 52 (JEFFERSON ST) AT MIDLAND AVENUE
74.	22520	US 52 (JEFFERSON ST) AT RAYNOR AVENUE
75.	22519	US 52 (JEFFERSON ST) AT REED STREET
76.	22514	US 52 (JEFFERSON ST) AT SPRINGFIELD AVENUE
77.	22517	US 52 (JEFFERSON ST) AT STRYKER AVENUE/WOODLAWN AVENUE
78.	21882	US 6 (CHANNAHON RD) AT HOLLYWOOD BOULEVARD
79.	22500	US 30 (COLLINS AV) AT JOIET HIGH SCHOOL
80.	21900	US 6 (CHANNAHON RD) AT EMPRESS ROAD/BUSH PARKWAY
81.	21881	US 6 (CHANNAHON RD) AT CATERPILLAR EAST DRIVE
82.	21880	US 6 (CHANNAHON RD) AT CATERPILLAR WEST DRIVE/JOHNS MANVILLE DRIVE
83.	22555	US 6-IL 171 (COLLINS ST) AT US 6 (JACKSON ST)
84.	22554	US 6 (JACKSON ST) AT HENDERSON AVENUE
85.	21020	US 6 (MAPLE RD) AT BRIGGS STREET/FERNWOOD AVENUE
86.	7410	US 6 (MAPLE ST) AT WALNUT AVENUE/DRAPER AVENUE
87.	22563	US 6/US 30 (JEFFERSON ST) AT RICHARDS STREET AND RICHARDS STREET AT WASHINGTON STREET
88.	21825	US 52 (MCDONOUGH ST) AT IL 53 (CHICAGO ST)
89.	21883	US 6 (CHANNAHON RD) AT McCLINTOCK ROAD
89A.	22546	IL 53 (OTTAWA ST) AT JACKSON STREET
89B.	22545	IL 53 SOUTHBOUND (OTTAWA ST) AT VAN BUREN STREET
89C.	0000	US 52 (RAYNOR AV) AT MARION STREET
89D.	21828	US 52 (RAYNOR AV) AT US 52 (MCDONOUGH ST)

GENERAL NOTES

THE ILLINOIS DEPARTMENT OF TRANSPORTATION "STANDARD SPECIFICATIONS FOR ROAD AND BRIDGE CONSTRUCTION", JANUARY 1, 2012; MANUAL OF UNIFORM TRAFFIC CONTROL DEVICES FOR STREETS AND HIGHWAYS, LATEST EDITION; PROJECT SPECIFICATIONS; ALL APPLICABLE REQUIREMENTS OF THE ILLINOIS DEPARTMENT OF TRANSPORTATION; THE CITIES OF JOLIET AND LOCKPORT; THE VILLAGE OF CHANNAHON, FRANKFORT, PLAINFIELD, AND ROMEVILLE; THE WILL COUNTY DEPARTMENT OF HIGHWAYS; ALL APPLICABLE REQUIREMENTS OF THE ORDINANCES OF AUTHORITIES HAVING JURISDICTION; AND ALL ADDENDA THERETO SHALL GOVERN THIS WORK.

THE CONTRACTOR SHALL REPLACE BROKEN MOUNTING BRACKETS AT ALL RELOCATED SIGNAL HEAD INTERSECTIONS OR AS DIRECTED BY THE ENGINEER. THE COST OF THIS WORK SHALL BE INCLUDED IN THE CORRESPONDING RELOCATED SIGNAL HEAD, RELOCATED PEDESTRIAN SIGNAL HEAD OR RELOCATED PEDESTRIAN PUSH-BUTTON AS SPECIFIED IN THE PLANS.

THE STANDARD SPECIFICATIONS, PROJECT SPECIFICATIONS, CONSTRUCTION PLANS, AND SUBSEQUENT DETAILS ARE ALL TO BE CONSIDERED AS PART OF THE CONTRACT. INCIDENTAL ITEMS OR ACCESSORIES NECESSARY TO COMPLETE THIS WORK MAY NOT BE SPECIFICALLY NOTED BUT ARE TO BE CONSIDERED A PART OF THE CONTRACT.

WHENEVER, DURING CONSTRUCTION OPERATIONS, ANY LOOSE MATERIAL IS DEPOSITED IN THE FLOW LINE OF GUTTERS, DRAINAGE STRUCTURES, DITCHES, ETC. SUCH THAT THE NATURAL FLOW LINE OF WATER IS OBSTRUCTED, THE LOOSE MATERIAL WILL BE REMOVED AT THE CLOSE OF EACH WORKING DAY. AT THE CONCLUSION OF CONSTRUCTION OPERATIONS, ALL DRAINAGE STRUCTURES AND FLOW LINES SHALL BE FREE FROM DIRT AND DEBRIS. THIS WORK SHALL BE CONSIDERED INCIDENTAL TO THE CONTRACT. THE CONTRACTOR'S FAILURE TO PROVIDE THE ABOVE WILL PRECLUDE ANY POSSIBLE ADDED COMPENSATION REQUESTED DUE TO DELAYS OF UNSTABLE MATERIALS CREATED AS A RESULT THEREOF.

THE CONTRACTOR SHALL SOLELY BE RESPONSIBLE FOR THE INSTALLATION AND MAINTENANCE OF ADEQUATE SIGNS, TRAFFIC CONTROL DEVICES, AND WARNING DEVICES TO INFORM AND PROTECT THE PUBLIC DURING ALL PHASES OF CONSTRUCTION.

THE CONTRACTOR IS RESPONSIBLE FOR RETURNING ALL AREAS AFFECTED BY EQUIPMENT OR LABORERS TO EXISTING CONDITIONS. THE CONTRACTOR IS ALSO RESPONSIBLE FOR PROTECTING ALL NEW WORK UNTIL COMPLETION OF THIS CONTRACT.

EXISTING UTILITIES: WHEN THE PLANS OR SPECIAL PROVISIONS INCLUDE INFORMATION PERTAINING TO THE LOCATION OF UNDERGROUND UTILITY FACILITIES, SUCH INFORMATION IS BASED ON RECORD INFORMATION PROVIDED BY THE INDIVIDUAL UTILITY OWNERS. IT SHALL BE THE CONTRACTOR'S RESPONSIBILITY TO DETERMINE THE ACTUAL LOCATION OF ALL SUCH FACILITIES. THE CONTRACTOR SHALL ALSO CONTACT J.U.L.I.E. TO OBTAIN LOCATES OF THE RESPECTIVE UTILITY COMPANIES UNDERGROUND FACILITIES.

RESTORATION OF WORK AREA: RESTORATION OF THE TRAFFIC SIGNAL WORK AREA SHALL BE INCIDENTAL TO THE RELATED PAY ITEM SUCH AS FOUNDATION, CONDUIT, HANDHOLE, TRENCH AND BACKFILL, ETC. AND NO EXTRA COMPENSATION SHALL BE ALLOWED. ALL ROADWAY SURFACES SUCH AS SHOULDERS, MEDIANS, SIDEWALKS, PAVEMENT, ETC. SHALL BE REPLACED IN KIND. ALL DAMAGE TO MOWED LAWNS SHALL BE REPLACED WITH AN APPROVED SOD IN ACCORDANCE TO STANDARD SPECIFICATIONS ARTICLE 252 WHICH SHALL INCLUDE THE REQUIRED WATERING PER ARTICLE 252.08. ALL DAMAGE TO UNMOWED FIELDS SHALL BE SEEDING IN ACCORDANCE WITH STANDARD SPECIFICATIONS ARTICLE 250 AND 251, RESPECTIVELY.

THE GENERAL CONTRACTOR IS REQUIRED TO HIRE AN ENVIRONMENTAL FIRM WITH AT LEAST FIVE (5) DOCUMENTED LEAKING UNDERGROUND STORAGE TANK CLEANUPS OR THAT IS PRE-QUALIFIED IN HAZARDOUS WASTE BY THE DEPARTMENT TO REMEDIATE THE SOIL CONTAMINATION AND MONITOR FOR WORKER PROTECTION.

IT SHALL BE THE CONTRACTOR'S RESPONSIBILITY TO VERIFY ALL DIMENSIONS AND CONDITIONS EXISTING IN THE FIELD PRIOR TO ORDERING MATERIALS AND BEGINNING CONSTRUCTION. THIS SHALL INCLUDE LOCATING THE MAST ARM FOUNDATIONS AND VERIFYING THE MAST ARM LENGTH.

THE EXACT LOCATION OF ALL UTILITIES SHALL BE FIELD VERIFIED BY THE CONTRACTOR BEFORE ORDERING ANY MATERIALS AND STARTING ANY WORK. FOR LOCATIONS OF UTILITIES, LOCALLY OWNED EQUIPMENT, LEASED ENFORCEMENT CAMERA SYSTEM FACILITIES, AND IDOT UNDERGROUND FACILITIES, CONTACT THE LOCAL COUNTIES, MUNICIPALITIES, AND IDOT FOR LOCATES. THE CONTRACTOR SHALL CALL 'JULIE' AT (800) 892-0123 OR 811, IN THE CITY OF CHICAGO CONTACT DIGGER AT (312) 744-7000 FOR FIELD LOCATIONS OF BURIED UTILITIES (48 HOURS NOTIFICATION REQUIRED).

THE CONTRACTOR SHALL CHECK THE PROPOSED TRAFFIC SIGNAL EQUIPMENT LOCATIONS FOR OVERHEAD UTILITY CONFLICTS. THE CONTRACTOR SHALL COORDINATE ANY CONFLICTS WITH THE UTILITY COMPANIES AND THE RESIDENT ENGINEER BEFORE ORDERING MATERIALS.

THE CONTRACTOR SHALL COORDINATE CONSTRUCTION ACTIVITIES WITH UTILITY COMPANIES, LOCAL GOVERNMENT AGENCIES, AND IDOT.

THE CONTRACTOR SHALL RELOCATE ANY EXISTING SIGN PANELS FROM PAINTED POSTS THAT ARE INDICATED FOR REPLACEMENT TO A NEW POST AS SHOWN ON THE PLANS OR AS DIRECTED BY THE ENGINEER. THE COST OF REMOVAL, RELOCATION, AND ANY NEW MOUNTING HARDWARE NECESSARY TO COMPLETE THIS WORK SHALL BE INCLUDED IN THE PAY ITEM OF THE LENGTH AS SPECIFIED IN THE PLANS.

FILE NAME: GOW21-002-Notes.dgn	USER NAME: gwhitten	DESIGNED: JRD	REVISED: 05-24-13
		DRAWN: GW3	REVISED:
		CHECKED: KLB	REVISED:
		DATE: 03-28-13	REVISED:

**STATE OF ILLINOIS
DEPARTMENT OF TRANSPORTATION**

INDEX OF SHEETS AND GENERAL NOTES

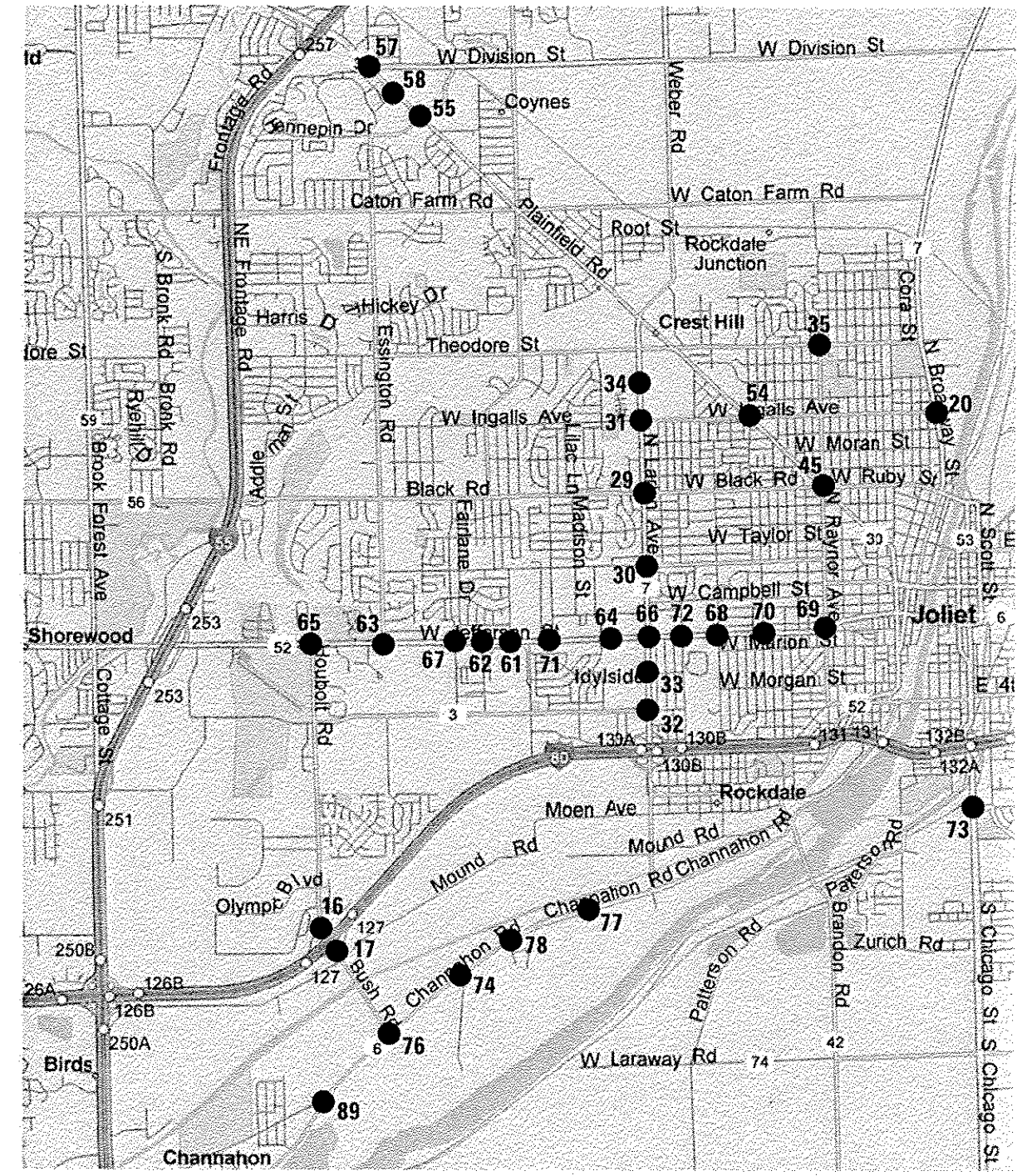
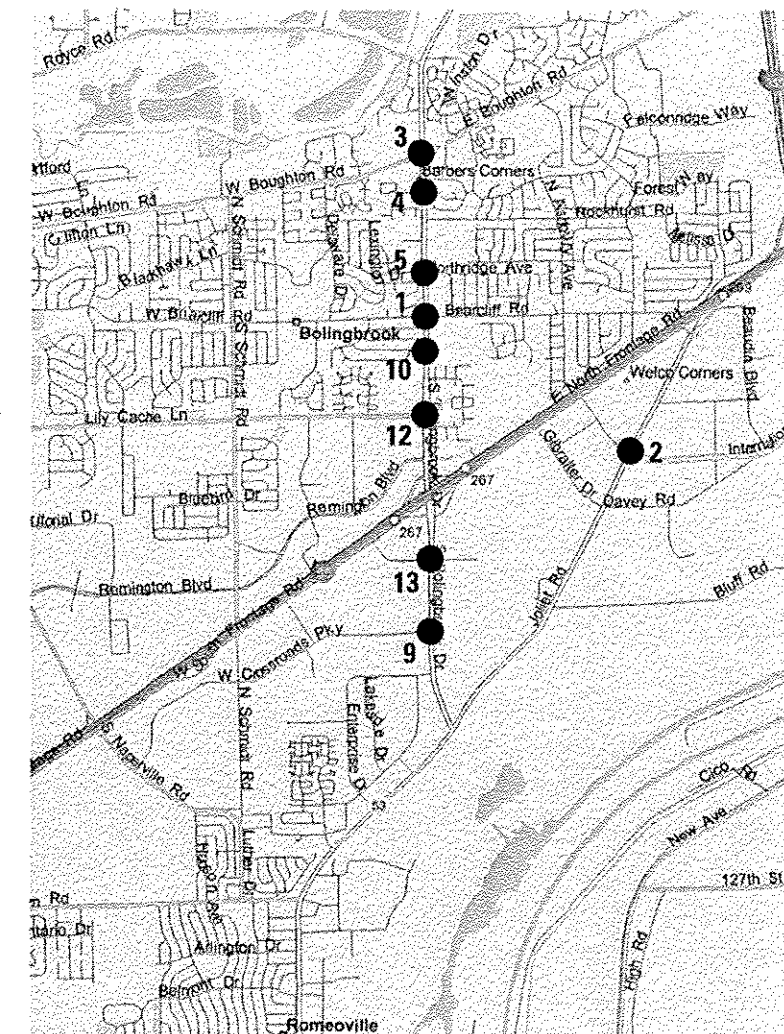
SCALE: NONE SHEET OF SHEETS STA. TO STA.

F.A. RTE.	SECTION	COUNTY	TOTAL SHEETS	SHEET NO.
VAR	2013-003-1	WILL	89	2
CONTRACT NO. GOW21				
ILLINOIS FED. AID PROJECT				

CHA #4085.888

TRAFFIC SIGNAL PLANS

NO. *	TS *	INTERSECTION NAME
1.	7357	IL 53 (BOLINGBROOK DR) AT BRIARCLIFF ROAD
2.	21590	JOLIET ROAD AT INTERNATIONALE PARKWAY
3.	7651	IL 53 (BOLINGBROOK DR) AT BOUGHTON ROAD
4.	7353	IL 53 (BOLINGBROOK DR) AT ROBINHOOD WAY
5.	7359	IL 53 (BOLINGBROOK DR) AT LEE LANE/NORTHRIDGE PLAZA
9.	7358	IL 53 (BOLINGBROOK DR) AT CROSSROADS PARKWAY
10.	22508	IL 53 (BOLINGBROOK DR) AT BEACON RIDGE DRIVE
12.	22507	IL 53 (BOLINGBROOK DR) AT LILY CACHE LANE
13.	22505	IL 53 (BOLINGBROOK DR) AT OLD CHICAGO DRIVE
14.	22550	BRIGGS STREET AT WASHINGTON STREET
16.	21925	180 NORTH RAMP AT HOUBOLT AVENUE
17.	21926	180 SOUTH RAMP AT HOUBOLT AVENUE
18.	22557	IL 171 (COLLINS ST) AT COLUMBIA STREET
19.	22556	IL 171 (COLLINS ST) AT OHIO STREET
20.	7509	IL 53 (BROADWAY ST) AT INGALLS AVENUE
21.	7513	IL 53 (BROADWAY ST) AT RUBY STREET
22.	22539	IL 53 (OTTAWA ST) AT CLINTON STREET
23.	22537	IL 53 (OTTAWA ST) AT WASHINGTON STREET
24.	22540	DELETED
25.	22538	IL 53 (SCOTT ST) AT VANBUREN STREET
26.	21801	IL 53 (SCOTT ST) AT CLAY STREET
27.	21802	IL 53 (SCOTT ST) AT JACKSON STREET
28.	21800	IL 53 (SCOTT ST) AT OHIO STREET
29.	22524	IL 7 (LARKIN AVE) AT BLACK ROAD
30.	22523	IL 7 (LARKIN AVE) AT GLENWOOD AVENUE
31.	22525	IL 7 (LARKIN AVE) AT INGALLS AVENUE
32.	22521	IL 7 (LARKIN AVE) AT MCDONOUGH STREET
33.	22522	IL 7 (LARKIN AVE) AT SAMS CLUB/WALMART ENTRANCE
34.	7540	IL 7 (LARKIN AVE) AT NORTHRIDGE PLAZA DRIVE
35.	7508	IL 7 (THEODORE ST) AT RAYNOR AVENUE
38.	22536	US 30 (CASS ST) AT CHICAGO STREET
39.	22552	US 30 (CASS ST) AT HENDERSON AVENUE
40.	22535	US 30 (CASS ST) AT IL 53 (OTTAWA ST)
41.	22534	US 30 (CASS ST) AT JOLIET STREET
42.	21781	US 30 (CASS ST) AT US 6 (COLLINS ST)
43.	21780	US 30 (CASS ST) AT EASTERN AVENUE
44.	21803	US 30 (CASS ST) AT IL 53 (SCOTT ST)
45.	7507	US 30 (PLAINFIELD RD) AT RAYNOR AVENUE/BLACK ROAD
46.	22530	US 30 (JEFFERSON ST) AT CHICAGO AVENUE
47.	22527	US 30 (JEFFERSON ST) AT HICKORY STREET
48.	22529	US 30 (JEFFERSON ST) AT IL 53 (OTTAWA ST)
49.	22531	US 30 (JEFFERSON ST) AT IL 53 (SCOTT ST)
50.	22528	US 30 (JEFFERSON ST) AT JOLIET STREET
51.	22526	US 30 (JEFFERSON ST) AT US 30 (CENTER ST)
52.	21782	US 30 (JEFFERSON ST) AT EASTERN AVENUE
53.	7445	US 30 (LINCOLN HWY/CASS ST) AT WALNUT STREET
54.	22565	US 30 (PLAINFIELD RD) AT INGALLS AVENUE
55.	8809	US 30 (PLAINFIELD RD) AT HENNEPIN DRIVE
57.	8807	US 30 (PLAINFIELD RD) AT ESSINGTON ROAD/MALL LOOP DRIVE
58.	8808	US 30 (PLAINFIELD RD) AT VOYAGER LANE
59.	22533	US 30 (WESTERN AV) AT HICKORY STREET
60.	22532	US 30 (WESTERN AV) AT US 30 (CENTER ST)
61.	22513	US 52 (JEFFERSON ST) AT BARNEY DRIVE
62.	22512	US 52 (JEFFERSON ST) AT CATERPILLAR DRIVE
63.	22510	US 52 (JEFFERSON ST) AT ESSINGTON ROAD
64.	22515	US 52 (JEFFERSON ST) AT HAMMES AVENUE
65.	22509	US 52 (JEFFERSON ST) AT HOUBOLT ROAD
66.	22516	US 52 (JEFFERSON ST) AT IL 7 (LARKIN AV)
67.	22511	US 52 (JEFFERSON ST) AT 129TH INFANTRY DRIVE
68.	22518	US 52 (JEFFERSON ST) AT MIDLAND AVENUE
69.	22520	US 52 (JEFFERSON ST) AT RAYNOR AVENUE
70.	22519	US 52 (JEFFERSON ST) AT REED STREET
71.	22514	US 52 (JEFFERSON ST) AT SPRINGFIELD AVENUE
72.	22517	US 52 (JEFFERSON ST) AT STRYKER AVENUE/WOODLAWN AVENUE
74.	21882	US 6 (CHANNANON RD) AT HOLLYWOOD BOULEVARD
75.	22500	US 30 (COLLINS AV) AT JOIJET HIGH SCHOOL
76.	21900	US 6 (CHANNANON RD) AT EMPRESS ROAD/BUSH PARKWAY
77.	21881	US 6 (CHANNANON RD) AT CATERPILLAR EAST DRIVE
78.	21880	US 6 (CHANNANON RD) AT CATERPILLAR WEST DRIVE/JOHNS MANVILLE DRIVE
79.	22555	US 6-IL 171 (COLLINS ST) AT US 6 (JACKSON ST)
80.	22554	US 6 (JACKSON ST) AT HENDERSON AVENUE
81.	21020	US 6 (MAPLE RD) AT BRIGGS STREET/FERNWOOD AVENUE
82.	7410	US 6 (MAPLE ST) AT WALNUT AVENUE/DRAPER AVENUE
87.	22563	US 6/US 30 (JEFFERSON ST) AT RICHARDS STREET AND RICHARDS STREET AT WASHINGTON STREET
88.	21825	US 52 (MCDONOUGH ST) AT IL 53 (CHICAGO ST)
89.	21883	US 6 (CHANNANON RD) AT McCLINTOCK ROAD
90.	22546	IL 53 (OTTAWA ST) AT JACKSON STREET
91.	22545	IL 53 SOUTHBOUND (OTTAWA ST) AT VAN BUREN STREET
92.		US 52 (RAYNOR AV) AT MARION STREET
93.	21828	US 52 (RAYNOR AV) AT US 52 (MCDONOUGH ST)



FILE NAME = 62W21-003-Location Map.dwg	USER NAME = gwhitten	DESIGNED - JRD	REVISED - 05-24-13
		DRAWN - GW3	REVISED -
	PLOT SCALE = 1/1	CHECKED - KL8	REVISED -
	PLOT DATE = 5/24/2013	DATE - 03-28-13	REVISED -

STATE OF ILLINOIS
DEPARTMENT OF TRANSPORTATION

SCALE: NONE	SHEET	OF	SHEETS	STA.	TO	STA.
-------------	-------	----	--------	------	----	------

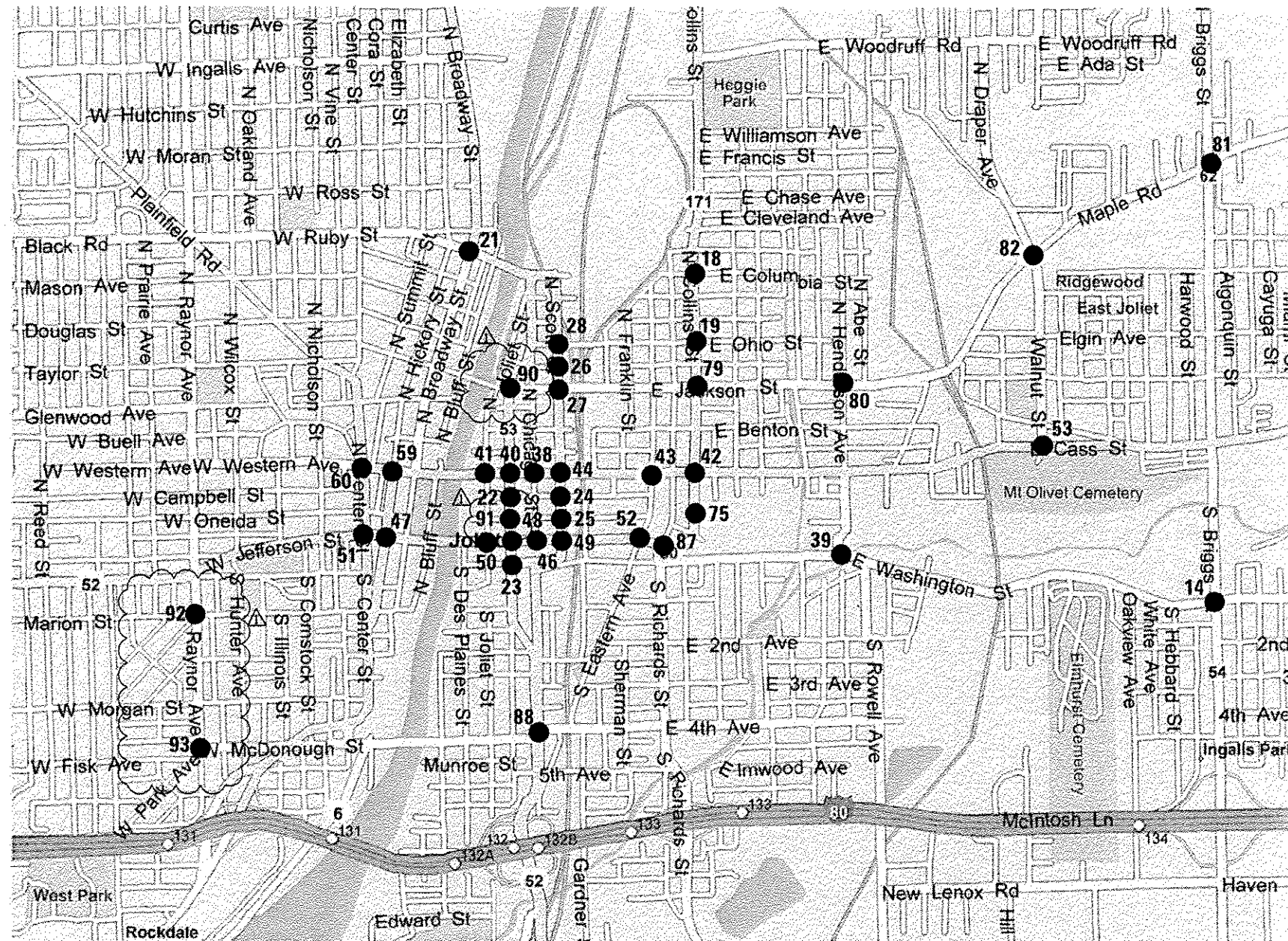
F.A. RTE. VAR.	SECTION 2013-003-1	COUNTY WILL	TOTAL SHEETS 89	SHEET NO. 3	CONTRACT NO. 60W21
----------------	--------------------	-------------	-----------------	-------------	--------------------

CHA #4085.888

ILLINOIS FED. AID PROJECT

TRAFFIC SIGNAL PLANS

NO. *	TS *	INTERSECTION NAME
1.	7357	IL 53 (BOLINGBROOK DR) AT BRIARCLIFF ROAD
2.	21590	JOLIET ROAD AT INTERNATIONALE PARKWAY
3.	7651	IL 53 (BOLINGBROOK DR) AT BOUGHTON ROAD
4.	7353	IL 53 (BOLINGBROOK DR) AT ROBINHOOD WAY
5.	7359	IL 53 (BOLINGBROOK DR) AT LEE LANE/NORTHBRIDGE PLAZA
9.	7358	IL 53 (BOLINGBROOK DR) AT CROSSROADS PARKWAY
10.	22508	IL 53 (BOLINGBROOK DR) AT BEACON RIDGE DRIVE
12.	22507	IL 53 (BOLINGBROOK DR) AT LILY CACHE LANE
13.	22505	IL 53 (BOLINGBROOK DR) AT OLD CHICAGO DRIVE
14.	22550	BRIGGS STREET AT WASHINGTON STREET
16.	21925	180 NORTH RAMP AT HOUBOLT AVENUE
17.	21926	180 SOUTH RAMP AT HOUBOLT AVENUE
18.	22557	IL 171 (COLLINS ST) AT COLUMBIA STREET
19.	22556	IL 171 (COLLINS ST) AT OHIO STREET
20.	7509	IL 53 (BROADWAY ST) AT INGALLS AVENUE
21.	7513	IL 53 (BROADWAY ST) AT RUBY STREET
22.	22539	IL 53 (OTTAWA ST) AT CLINTON STREET
23.	22537	IL 53 (OTTAWA ST) AT WASHINGTON STREET
24.	22540	IL 53 (SCOTT ST) AT CLINTON STREET
25.	22538	IL 53 (SCOTT ST) AT VANBUREN STREET
26.	21801	IL 53 (SCOTT ST) AT CLAY STREET
27.	21802	IL 53 (SCOTT ST) AT JACKSON STREET
28.	21800	IL 53 (SCOTT ST) AT OHIO STREET
29.	22524	IL 7 (LARKIN AVE) AT BLACK ROAD
30.	22523	IL 7 (LARKIN AVE) AT GLENWOOD AVENUE
31.	22525	IL 7 (LARKIN AVE) AT INGALLS AVENUE
32.	22521	IL 7 (LARKIN AVE) AT MCDONOUGH STREET
33.	22522	IL 7 (LARKIN AVE) AT SAMS CLUB/WALMART ENTRANCE
34.	7540	IL 7 (LARKIN AVE) AT NORTHBRIDGE PLAZA DRIVE
35.	7508	IL 7 (THEODORE ST) AT RAYNOR AVENUE
38.	22536	US 30 (CASS ST) AT CHICAGO STREET
39.	22552	US 30 (CASS ST) AT HENDERSON AVENUE
40.	22535	US 30 (CASS ST) AT IL 53 (OTTAWA ST)
41.	22534	US 30 (CASS ST) AT JOLIET STREET
42.	21781	US 30 (CASS ST) AT US 6 (COLLINS ST)
43.	21780	US 30 (CASS ST) AT EASTERN AVENUE
44.	21803	US 30 (CASS ST) AT IL 53 (SCOTT ST)
45.	7507	US 30 (PLAINFIELD RD) AT RAYNOR AVENUE/BLACK ROAD
46.	22530	US 30 (JEFFERSON ST) AT CHICAGO AVENUE
47.	22527	US 30 (JEFFERSON ST) AT HICKORY STREET
48.	22529	US 30 (JEFFERSON ST) AT IL 53 (OTTAWA ST)
49.	22531	US 30 (JEFFERSON ST) AT IL 53 (SCOTT ST)
50.	22528	US 30 (JEFFERSON ST) AT JOLIET STREET
51.	22526	US 30 (JEFFERSON ST) AT US 30 (CENTER ST)
52.	21782	US 30 (JEFFERSON ST) AT EASTERN AVENUE
53.	7445	US 30 (LINCOLN HWY/CASS ST) AT WALNUT STREET
54.	22565	US 30 (PLAINFIELD RD) AT INGALLS AVENUE
55.	8809	US 30 (PLAINFIELD RD) AT HENNEPIN DRIVE
57.	8807	US 30 (PLAINFIELD RD) AT ESSINGTON ROAD/MALL LOOP DRIVE
58.	8808	US 30 (PLAINFIELD RD) AT VOYAGER LANE
59.	22533	US 30 (WESTERN AV) AT HICKORY STREET
60.	22532	US 30 (WESTERN AV) AT US 30 (CENTER ST)
61.	22513	US 52 (JEFFERSON ST) AT BARNEY DRIVE
62.	22512	US 52 (JEFFERSON ST) AT CATERPILLAR DRIVE
63.	22510	US 52 (JEFFERSON ST) AT ESSINGTON ROAD
64.	22515	US 52 (JEFFERSON ST) AT HAMMES AVENUE
65.	22509	US 52 (JEFFERSON ST) AT HOUBOLT ROAD
66.	22516	US 52 (JEFFERSON ST) AT IL 7 (LARKIN AV)
67.	22511	US 52 (JEFFERSON ST) AT 129TH INFANTRY DRIVE
68.	22518	US 52 (JEFFERSON ST) AT MIDLAND AVENUE
69.	22520	US 52 (JEFFERSON ST) AT RAYNOR AVENUE
70.	22519	US 52 (JEFFERSON ST) AT REED STREET
71.	22514	US 52 (JEFFERSON ST) AT SPRINGFIELD AVENUE
72.	22517	US 52 (JEFFERSON ST) AT STRYKER AVENUE/WOODLAWN AVENUE
74.	21882	US 6 (CHANNAHON RD) AT HOLLYWOOD BOULEVARD
75.	22500	US 30 (COLLINS AV) AT JOILET HIGH SCHOOL
76.	21900	US 6 (CHANNAHON RD) AT EMPRESS ROAD/BUSH PARKWAY
77.	21881	US 6 (CHANNAHON RD) AT CATERPILLAR EAST DRIVE
78.	21880	US 6 (CHANNAHON RD) AT CATERPILLAR WEST DRIVE/JOHNS MANVILLE DRIVE
79.	22555	US 6-IL 171 (COLLINS ST) AT US 6 (JACKSON ST)
80.	22554	US 6 (JACKSON ST) AT HENDERSON AVENUE
81.	21020	US 6 (MAPLE RD) AT BRIGGS STREET/FERNWOOD AVENUE
82.	7410	US 6 (MAPLE ST) AT WALNUT AVENUE/DRAPER AVENUE
87.	22563	US 6/US 30 (JEFFERSON ST) AT RICHARDS STREET AND RICHARDS STREET AT WASHINGTON STREET
88.	21825	US 52 (MCDONOUGH ST) AT IL 53 (CHICAGO ST)
89.	21883	US 6 (CHANNAHON RD) AT McCLINTOCK ROAD
90.	22546	IL 53 (OTTAWA ST) AT JACKSON STREET
91.	22545	IL 53 SOUTHBOUND (OTTAWA ST) AT VAN BUREN STREET
92.		US 52 (RAYNOR AV) AT MARION STREET
93.	21828	US 52 (RAYNOR AV) AT US 52 (MCDONOUGH ST)



(SEQ) (FUND) 1 2 4 5 1 2 3 4 5 1 2

SUMMARY OF QUANTITIES	LOCATION OF WORK	LOCATION OF WORK																
		1, 3, 4, 5, 9, 10, 13	12	92	18-33, 35, 38, 39, 41, 43, 47, 50, 52-55, 57-59, 61, 62, 64-72, 80, 82, 87, 90, 91, 93	45, 46, 63, 65, 74, 89	51, 69, 79, 88	14	81	76	2	34	77	78	16, 17, 40, 42, 44, 48, 49, 60, 66	4, 10, 12	21	
		95% STATE 5% VILLAGE OF BOLINGBROOK	96.7% STATE 3.3% VILLAGE OF BOLINGBROOK	94% STATE 96% CITY OF JOLIET	95% STATE 5% CITY OF JOLIET	96.7% STATE 3.3% CITY OF JOLIET	97.5% STATE 2.5% CITY OF JOLIET	92.5% STATE 5% WILL CO. 2.5% CITY OF JOLIET	95% STATE 5% WILL COUNTY	96.7% STATE 3.3% TROY TOWNSHIP	95% STATE 5% PRO LOGISTICS	95% STATE 5% SIMON PROPERTY GROUP	95% STATE 5% CATERPILLAR, INC.	95% STATE 5% CENTER POINT PROPERTIES	100% STATE	100% VILLAGE OF BOLINGBROOK	100% CITY OF JOLIET	
		TRAF. SIGNALS	TRAF. SIGNALS	TRAF. SIGNALS	TRAF. SIGNALS	TRAF. SIGNALS	TRAF. SIGNALS	TRAF. SIGNALS	TRAF. SIGNALS	TRAF. SIGNALS	TRAF. SIGNALS	TRAF. SIGNALS	TRAF. SIGNALS	TRAF. SIGNALS	TRAF. SIGNALS	TRAF. SIGNALS	TRAF. SIGNALS	TRAF. SIGNALS
TYPE	UNIT	TOTAL	URBAN	URBAN	URBAN	URBAN	URBAN	URBAN	URBAN	URBAN	URBAN	URBAN	URBAN	URBAN	URBAN	URBAN	URBAN	
67000400	ENGINEER'S FIELD OFFICE, TYPE A	CAL MO	4												4			
67100100	MOBILIZATION	L SUM	1												1			
70102635	TRAFFIC CONTROL AND PROTECTION, STANDARD 701701	L SUM	1												1			
85000200	MAINTENANCE OF EXISTING TRAFFIC SIGNAL INSTALLATION	EACH	81	7	1	1	46	6	4	1	1	1	1	1	1	1	9	
85700200	FULL-ACTUATED CONTROLLER AND TYPE IV CABINET	EACH	1								1							
86300400	CONTROLLER CABINET TYPE IV	EACH	1				1											
87502440	TRAFFIC SIGNAL POST, GALVANIZED STEEL 10 FT.	EACH	9				5		1								3	
87502480	TRAFFIC SIGNAL POST, GALVANIZED STEEL 14 FT.	EACH	32	3	2		20		2	2							3	
87502500	TRAFFIC SIGNAL POST, GALVANIZED STEEL 16 FT.	EACH	23	10			4			2	4						3	
87502520	TRAFFIC SIGNAL POST, GALVANIZED STEEL 18 FT.	EACH	3	2	1													
88030020	SIGNAL HEAD, LED, 1-FACE, 3-SECTION, MAST-ARM MOUNTED	EACH	50				9	3	4	6	4	3		6	4	3	8	
88030050	SIGNAL HEAD, LED, 1-FACE, 3-SECTION, BRACKET MOUNTED	EACH	27				4	3		2		3		2	3	2	8	

- NO. INTERSECTION
- IL 53 (BOLINGBROOK DR) AT BRIARCLIFF ROAD
 - JOLIET ROAD AT INTERNATIONALE PARKWAY
 - IL 53 (BOLINGBROOK DR) AT BOUGHTON ROAD
 - IL 53 (BOLINGBROOK DR) AT ROBINHOOD WAY
 - IL 53 (BOLINGBROOK DR) AT LEE LANE / NORTHRIDGE AVENUE
 - IL 53 (BOLINGBROOK DR) AT CROSSROADS PARKWAY
 - IL 53 (BOLINGBROOK DR) AT BEACON RIDGE DR
 - IL 53 (BOLINGBROOK DR) AT LILY CACHE LANE
 - IL 53 (BOLINGBROOK DR) AT OLD CHICAGO DRIVE
 - BRIIGGS STREET AT WASHINGTON STREET
 - I-80 NORTH RAMP AT HOUBOLT ROAD
 - I-80 SOUTH RAMP AT HOUBOLT ROAD
 - IL 171 (COLLINS ST) AT COLUMBIA STREET
 - IL 171 (COLLINS ST) AT OHIO STREET
 - IL 53 (BROADWAY ST) AT INGALLS AVENUE
 - IL 53 (BROADWAY ST) AT RUBY STREET
 - IL 53 (OTTAWA ST) AT CLINTON STREET
 - IL 53 (OTTAWA ST) AT WASHINGTON STREET
 - IL 53 (SCOTT ST) AT CLINTON STREET
 - IL 53 (SCOTT ST) AT VAN BUREN STREET

- NO. INTERSECTION
- IL 53 (SCOTT ST) AT CLAY STREET
 - IL 53 (SCOTT ST) AT JACKSON STREET
 - IL 53 (SCOTT ST) AT OHIO STREET
 - IL 7 (LARKIN AV) AT BLACK ROAD
 - IL 7 (LARKIN AV) AT GLENWOOD AVENUE
 - IL 7 (LARKIN AV) AT INGALLS AVENUE
 - IL 7 (LARKIN AV) AT McDONOUGH STREET
 - IL 7 (LARKIN AV) AT SAM'S CLUB / WAL-MART ENTRANCE
 - IL 7 (LARKIN AV) AT NORTHRIDGE PLAZA
 - IL 7 (THEODORE ST) AT RAYNOR AVENUE
 - U.S. 30 (CASS ST) AT CHICAGO STREET
 - U.S. 30 (CASS ST) AT HENDERSON AVENUE
 - U.S. 30 (CASS ST) AT IL 53 (OTTAWA ST)
 - U.S. 30 (CASS ST) AT JOLIET STREET
 - U.S. 30 (CASS ST) AT U.S. 6 (COLLINS ST)
 - U.S. 30 (CASS ST) AT EASTERN AVENUE
 - U.S. 30 (CASS ST) AT IL 53 (SCOTT ST)
 - U.S. 30 (PLAINFIELD RD) AT RAYNOR AVENUE / BLACK ROAD
 - U.S. 30 (JEFFERSON ST) AT CHICAGO STREET
 - U.S. 30 (JEFFERSON ST) AT HICKORY STREET

- NO. INTERSECTION
- U.S. 30 (JEFFERSON ST) AT IL 53 (OTTAWA ST)
 - U.S. 30 (JEFFERSON ST) AT IL 53 (SCOTT ST)
 - U.S. 30 (JEFFERSON ST) AT JOLIET STREET
 - U.S. 30 (JEFFERSON ST) AT U.S. 30 (CENTER ST)
 - U.S. 30 (JEFFERSON ST) AT EASTERN AVENUE
 - U.S. 30 (LINCOLN HWY / CASS ST) AT WALNUT STREET
 - U.S. 30 (PLAINFIELD RD) AT INGALLS AVENUE
 - U.S. 30 (PLAINFIELD RD) AT HENNEPIN DRIVE
 - U.S. 30 (PLAINFIELD RD) AT ESSINGTON ROAD / MALL LOOP DRIVE
 - U.S. 30 (PLAINFIELD RD) AT VOYAGER DRIVE
 - U.S. 30 (WESTERN AV) AT HICKORY STREET
 - U.S. 30 (WESTERN AV) AT U.S. 30 (CENTER ST)
 - U.S. 52 (JEFFERSON ST) AT BARNEY DRIVE
 - U.S. 52 (JEFFERSON ST) AT CATERPILLAR DRIVE
 - U.S. 52 (JEFFERSON ST) AT ESSINGTON ROAD
 - U.S. 52 (JEFFERSON ST) AT HAMMES AVENUE
 - U.S. 52 (JEFFERSON ST) AT HOUBOLT ROAD
 - U.S. 52 (JEFFERSON ST) AT IL 7 (LARKIN AV)
 - U.S. 52 (JEFFERSON ST) AT 129TH INFANTRY DRIVE
 - U.S. 52 (JEFFERSON ST) AT MIDLAND AVENUE

- NO. INTERSECTION
- U.S. 52 (JEFFERSON ST) AT RAYNOR AVENUE
 - U.S. 52 (JEFFERSON ST) AT REED STREET
 - U.S. 52 (JEFFERSON ST) AT SPRINGFIELD AVENUE
 - U.S. 52 (JEFFERSON ST) AT STRYKER AVENUE / WOODLAWN AVENUE
 - U.S. 6 (CHANNAHON RD) AT HOLLYWOOD BOULEVARD
 - U.S. 6 - U.S. 30 (COLLINS AV) AT JOLIET HIGH SCHOOL
 - U.S. 6 (CHANNAHON RD) AT EMPRESS ROAD / BUSH PARKWAY
 - U.S. 6 (CHANNAHON RD) AT CATERPILLAR EAST DRIVE
 - U.S. 6 (CHANNAHON RD) AT CATERPILLAR WEST DRIVE / JOHNS MANVILLE DRIVE
 - U.S. 6 - IL 171 (COLLINS ST) AT U.S. 6 (JACKSON ST)
 - U.S. 6 (JACKSON ST) AT HENDERSON AVENUE
 - U.S. 6 (MAPLE RD) AT BRIGGS STREET / FERNWOOD AVENUE
 - U.S. 6 (MAPLE RD) AT WALNUT AVENUE / DRAPER AVENUE
 - U.S. 6 - U.S. 30 (JEFFERSON ST) AT RICHARDS STREET AND RICHARDS STREET AT WASHINGTON STREET
 - U.S. 6 - U.S. 52 (McDONOUGH ST) AT IL 53 (CHICAGO ST)
 - U.S. 6 (CHANNAHON RD) AT McCLINTOCK ROAD
 - IL 53 (OTTAWA ST) AT JACKSON STREET
 - IL 53 SOUTHBOUND (OTTAWA ST) AT VAN BUREN STREET
 - US 52 (RAYNOR AV) AT MARION STREET
 - US 52 (RAYNOR AV) AT US 52 (McDONOUGH ST)

Rev. 6-5-13

		LOCATION OF WORK	1, 3, 4, 5, 9, 10, 13	12	92	18-33, 35, 38, 39, 41, 43, 47, 50, 52-55, 57-59, 61, 62, 64, 67, 68, 70-72, 80, 82, 87, 90, 91, 93	45, 46, 63, 65, 74, 89	51, 69, 79, 88	14	81	76	2	34	77	78	16, 17, 40, 42, 44, 48, 49, 60, 66	4, 10, 12	21
SUMMARY OF QUANTITIES		FUNDING BREAKDOWNS	95% STATE 5% VILLAGE OF BOLINGBROOK	96.7% STATE 3.3% VILLAGE OF BOLINGBROOK	94% STATE 96% CITY OF JOLIET	95% STATE 5% CITY OF JOLIET	96.7% STATE 3.3% CITY OF JOLIET	97.5% STATE 2.5% CITY OF JOLIET	92.5% STATE 5% WILL CO. 2.5% CITY OF JOLIET	95% STATE 5% WILL COUNTY	96.7% STATE 3.3% TROY TOWNSHIP	95% STATE 5% PRO LOGISTICS	95% STATE 5% SIMON PROPERTY GROUP	95% STATE 5% CATERPILLAR, INC.	95% STATE 5% CENTER POINT PROPERTIES	100% STATE	100% VILLAGE OF BOLINGBROOK	100% CITY OF JOLIET
		TRAF. SIGNALS	TRAF. SIGNALS	TRAF. SIGNALS	TRAF. SIGNALS	TRAF. SIGNALS	TRAF. SIGNALS	TRAF. SIGNALS	TRAF. SIGNALS	TRAF. SIGNALS	TRAF. SIGNALS	TRAF. SIGNALS	TRAF. SIGNALS	TRAF. SIGNALS	TRAF. SIGNALS	TRAF. SIGNALS	TRAF. SIGNALS	TRAF. SIGNALS
		TYPE	0021	0021	0021	0021	0021	0021	0021	0021	0021	0021	0021	0021	0021	0021	0021	0021
CODE NO.	ITEM	UNIT	TOTAL	URBAN	URBAN	URBAN	URBAN	URBAN	URBAN	URBAN	URBAN	URBAN	URBAN	URBAN	URBAN	URBAN	URBAN	URBAN
88030070	SIGNAL HEAD, LED, 1-FACE, 4-SECTION, BRACKET MOUNTED	EACH	2				2											
88030080	SIGNAL HEAD, LED, 1-FACE, 4-SECTION, MAST ARM MOUNTED	EACH	3				2								1			
88030100	SIGNAL HEAD, LED, 1-FACE, 5-SECTION, BRACKET MOUNTED	EACH	16				2	1		2	2			2		3	4	
88030110	SIGNAL HEAD, LED, 1-FACE, 5-SECTION, MAST-ARM MOUNTED	EACH	18				2	3	4	2	4		1	2				
88030210	SIGNAL HEAD, LED, 2-FACE, 3-SECTION, BRACKET MOUNTED	EACH	5				1	1				1				2		
88030240	SIGNAL HEAD, LED, 2-FACE, 1-3 SECTION, 1-5 SECTION, BRACKET MOUNTED	EACH	7						4		2	1						
88030310	SIGNAL HEAD, LED, 3-FACE, 3-SECTION, BRACKET MOUNTED	EACH	1													1		
88055150	OPTICALLY PROGRAMMED SIGNAL HEAD, LED, 1-FACE, 3-SECTION, BRACKET MOUNTED	EACH	1											1				
88060110	COMBINATION SIGNAL HEAD, LED, 2-FACE, 1-3 SECTION OPTICALLY PROGRAMMED, 1-3 SECTION, BRACKET MOUNTED	EACH	1											1				
88102717	PEDESTRIAN SIGNAL HEAD, LED, 1-FACE, BRACKET MOUNTED WITH COUNTDOWN TIMER	EACH	24	20					4									
88102747	PEDESTRIAN SIGNAL HEAD, LED, 2-FACE, BRACKET MOUNTED WITH COUNTDOWN TIMER	EACH	21	11					2	4	4							
88200210	TRAFFIC SIGNAL BACKPLATE, LOUVERED, ALUMINUM	EACH	71				13	6	8	8	8	4		8	4	4	8	

- NO. INTERSECTION
- IL 53 (BOLINGBROOK DR) AT BRIARCLIFF ROAD
 - JOLIET ROAD AT INTERNATIONALE PARKWAY
 - IL 53 (BOLINGBROOK DR) AT BOUGHTON ROAD
 - IL 53 (BOLINGBROOK DR) AT ROBINHOOD WAY
 - IL 53 (BOLINGBROOK DR) AT LEE LANE / NORTHRIDGE AVENUE
 - IL 53 (BOLINGBROOK DR) AT CROSSROADS PARKWAY
 - IL 53 (BOLINGBROOK DR) AT BEACON RIDGE DR
 - IL 53 (BOLINGBROOK DR) AT LILY CACHE LANE
 - IL 53 (BOLINGBROOK DR) AT OLD CHICAGO DRIVE
 - BRIGGS STREET AT WASHINGTON STREET
 - I-80 NORTH RAMP AT HOUBOLT ROAD
 - I-80 SOUTH RAMP AT HOUBOLT ROAD
 - IL 171 (COLLINS ST) AT COLUMBIA STREET
 - IL 171 (COLLINS ST) AT OHIO STREET
 - IL 53 (BROADWAY ST) AT INGALLS AVENUE
 - IL 53 (BROADWAY ST) AT RUBY STREET
 - IL 53 (OTTAWA ST) AT CLINTON STREET
 - IL 53 (OTTAWA ST) AT WASHINGTON STREET
 - IL 53 (SCOTT ST) AT CLINTON STREET
 - IL 53 (SCOTT ST) AT VAN BUREN STREET

- NO. INTERSECTION
- IL 53 (SCOTT ST) AT CLAY STREET
 - IL 53 (SCOTT ST) AT JACKSON STREET
 - IL 53 (SCOTT ST) AT OHIO STREET
 - IL 7 (LARKIN AV) AT BLACK ROAD
 - IL 7 (LARKIN AV) AT GLENWOOD AVENUE
 - IL 7 (LARKIN AV) AT INGALLS AVENUE
 - IL 7 (LARKIN AV) AT McDONOUGH STREET
 - IL 7 (LARKIN AV) AT SAM'S CLUB / WAL-MART ENTRANCE
 - IL 7 (LARKIN AV) AT NORTHRIDGE PLAZA
 - IL 7 (THEODORE ST) AT RAYNOR AVENUE
 - U.S. 30 (CASS ST) AT CHICAGO STREET
 - U.S. 30 (CASS ST) AT HENDERSON AVENUE
 - U.S. 30 (CASS ST) AT IL 53 (OTTAWA ST)
 - U.S. 30 (CASS ST) AT JOLIET STREET
 - U.S. 30 (CASS ST) AT U.S. 6 (COLLINS ST)
 - U.S. 30 (CASS ST) AT EASTERN AVENUE
 - U.S. 30 (CASS ST) AT IL 53 (SCOTT ST)
 - U.S. 30 (PLAINFIELD RD) AT RAYNOR AVENUE / BLACK ROAD
 - U.S. 30 (JEFFERSON ST) AT CHICAGO STREET
 - U.S. 30 (JEFFERSON ST) AT HICKORY STREET

- NO. INTERSECTION
- U.S. 30 (JEFFERSON ST) AT IL 53 (OTTAWA ST)
 - U.S. 30 (JEFFERSON ST) AT IL 53 (SCOTT ST)
 - U.S. 30 (JEFFERSON ST) AT JOLIET STREET
 - U.S. 30 (JEFFERSON ST) AT U.S. 30 (CENTER ST)
 - U.S. 30 (JEFFERSON ST) AT EASTERN AVENUE
 - U.S. 30 (LINCOLN HWY / CASS ST) AT WALNUT STREET
 - U.S. 30 (PLAINFIELD RD) AT INGALLS AVENUE
 - U.S. 30 (PLAINFIELD RD) AT HENNEPIN DRIVE
 - U.S. 30 (PLAINFIELD RD) AT ESSINGTON ROAD / MALL LOOP DRIVE
 - U.S. 30 (PLAINFIELD RD) AT VOYAGER DRIVE
 - U.S. 30 (WESTERN AV) AT HICKORY STREET
 - U.S. 30 (WESTERN AV) AT U.S. 30 (CENTER ST)
 - U.S. 52 (JEFFERSON ST) AT BARNEY DRIVE
 - U.S. 52 (JEFFERSON ST) AT CATERPILLAR DRIVE
 - U.S. 52 (JEFFERSON ST) AT ESSINGTON ROAD
 - U.S. 52 (JEFFERSON ST) AT HAMMES AVENUE
 - U.S. 52 (JEFFERSON ST) AT HOUBOLT ROAD
 - U.S. 52 (JEFFERSON ST) AT IL 7 (LARKIN AV)
 - U.S. 52 (JEFFERSON ST) AT 129TH INFANTRY DRIVE
 - U.S. 52 (JEFFERSON ST) AT MIDLAND AVENUE

- NO. INTERSECTION
- U.S. 52 (JEFFERSON ST) AT RAYNOR AVENUE
 - U.S. 52 (JEFFERSON ST) AT REED STREET
 - U.S. 52 (JEFFERSON ST) AT SPRINGFIELD AVENUE
 - U.S. 52 (JEFFERSON ST) AT STRYKER AVENUE / WOODLAWN AVENUE
 - U.S. 6 (CHANNAHON RD) AT HOLLYWOOD BOULEVARD
 - U.S. 6 - U.S. 30 (COLLINS AV) AT JOLIET HIGH SCHOOL
 - U.S. 6 (CHANNAHON RD) AT EMPRESS ROAD / BUSH PARKWAY
 - U.S. 6 (CHANNAHON RD) AT CATERPILLAR EAST DRIVE
 - U.S. 6 (CHANNAHON RD) AT CATERPILLAR WEST DRIVE / JOHNS MANVILLE DRIVE
 - U.S. 6 - IL 171 (COLLINS ST) AT U.S. 6 (JACKSON ST)
 - U.S. 6 (JACKSON ST) AT HENDERSON AVENUE
 - U.S. 6 (MAPLE RD) AT BRIGGS STREET / FERNWOOD AVENUE
 - U.S. 6 (MAPLE RD) AT WALNUT AVENUE / DRAPER AVENUE
 - U.S. 6 - U.S. 30 (JEFFERSON ST) AT RICHARDS STREET AND RICHARDS STREET AT WASHINGTON STREET
 - U.S. 6 - U.S. 52 (McDONOUGH ST) AT IL 53 (CHICAGO ST)
 - U.S. 6 (CHANNAHON RD) AT McCLINTOCK ROAD
 - IL 53 (OTTAWA ST) AT JACKSON STREET
 - IL 53 SOUTHBOUND (OTTAWA ST) AT VAN BUREN STREET
 - US 52 (RAYNOR AV) AT MARION STREET
 - US 52 (RAYNOR AV) AT US 52 (McDONOUGH ST)

Rev. 6-5-13

FILE NAME: GRW21-006-SD0.dgn	USER NAME: gwhiston	DESIGNED: JRD	REVISED: 05-24-13	STATE OF ILLINOIS DEPARTMENT OF TRANSPORTATION	SUMMARY OF QUANTITIES (SHEET 2 OF 3)	F.A. RTE. VAR	SECTION	COUNTY	TOTAL SHEETS	SHEET NO.
MODEL NAME:	PLOT SCALE: 1/4"	DRAWN: CW3	CHECKED: KLB			2013-003-1	WILL	89	6	
	PLOT DATE: 5/24/2013	DATE: 03-28-13	REVISOR:			ILLINOIS FED. AID PROJECT	CONTRACT NO. 60W21			
SCALE: NONE		SHEET OF SHEETS				STA. TO STA.				

SUMMARY OF QUANTITIES		LOCATION OF WORK	1, 3, 4, 5, 9, 10, 13	12	92	18-33, 35, 38, 39, 41, 43, 47, 50, 52-55, 57-59, 61, 62, 64, 67, 68, 70-72, 80, 82, 87, 90, 91, 92	45, 46, 63, 65, 74, 89	51, 69, 79, 88	14	81	76	2	34	77	78	16, 17, 40, 42, 44, 48, 49, 60, 66	4, 10, 12	21
		FUNDING BREAKDOWNS	95% STATE 5% VILLAGE OF BOLINGBROOK	96.7% STATE 3.3% VILLAGE OF BOLINGBROOK	94% STATE 96% CITY OF JOLIET	95% STATE 5% CITY OF JOLIET	96.7% STATE 3.3% CITY OF JOLIET	97.5% STATE 2.5% CITY OF JOLIET	92.5% STATE 5% WILL CO. 2.5% CITY OF JOLIET	95% STATE 5% WILL COUNTY	96.7% STATE 3.3% TROY TOWNSHIP	95% STATE 5% PRO LOGISTICS	95% STATE 5% SIMON PROPERTY GROUP	95% STATE 5% CATERPILLAR, INC.	95% STATE 5% CENTER POINT PROPERTIES	100% STATE	100% VILLAGE OF BOLINGBROOK	100% CITY OF JOLIET
		TRAF. SIGNALS	TRAF. SIGNALS	TRAF. SIGNALS	TRAF. SIGNALS	TRAF. SIGNALS	TRAF. SIGNALS	TRAF. SIGNALS	TRAF. SIGNALS	TRAF. SIGNALS	TRAF. SIGNALS	TRAF. SIGNALS	TRAF. SIGNALS	TRAF. SIGNALS	TRAF. SIGNALS	TRAF. SIGNALS	TRAF. SIGNALS	TRAF. SIGNALS
CODE NO.	ITEM	UNIT	TOTAL	URBAN	URBAN	URBAN	URBAN	URBAN	URBAN	URBAN	URBAN	URBAN	URBAN	URBAN	URBAN	URBAN	URBAN	URBAN
88500100	INDUCTIVE LOOP DETECTOR	EACH	18				8			10								
88800100	PEDESTRIAN PUSH-BUTTON	EACH	18	10					8									
89500100	RELOCATE EXISTING SIGNAL HEAD	EACH	72	28	3		32		2							7		
89500200	RELOCATE EXISTING PEDESTRIAN SIGNAL HEAD	EACH	55				36		5							14		
89500400	RELOCATE EXISTING PEDESTRIAN PUSH-BUTTON	EACH	50				34		3							13		
89501400	RELOCATE EXISTING EMERGENCY VEHICLE PRIORITY SYSTEM, DETECTOR UNIT	EACH	3															3
89501410	RELOCATE EXISTING EMERGENCY VEHICLE PRIORITY SYSTEM, PHASING UNIT	EACH	1															1
89502210	MODIFY EXISTING CONTROLLER CABINET	EACH	52			1	33		5	2	1		1	1	1	1	1	5
89502375	REMOVE EXISTING TRAFFIC SIGNAL EQUIPMENT	EACH	33	7	1		11		1	2	1		1	1	1	1	1	5
X8620050	UNINTERRUPTABLE POWER SUPPLY, GROUND MOUNTED	EACH	19				11		1	3								4
X8620200	UNINTERRUPTABLE POWER SUPPLY, SPECIAL	EACH	53			1	34		5	1	1	1	1	1	1	1	1	5
X8880015	PEDESTRIAN PUSH-BUTTON, NON-LATCHING	EACH	32	22					6				4					
0001604	TRAINEES - TRAINING PROGRAM GRADUATE HOUR		500															500

- NO. INTERSECTION
- IL 53 (BOLINGBROOK DR) AT BRIARCLIFF ROAD
 - JOLIET ROAD AT INTERNATIONALE PARKWAY
 - IL 53 (BOLINGBROOK DR) AT BOUGHTON ROAD
 - IL 53 (BOLINGBROOK DR) AT ROBINHOOD WAY
 - IL 53 (BOLINGBROOK DR) AT LEE LANE / NORTHRIDGE AVENUE
 - IL 53 (BOLINGBROOK DR) AT CROSSROADS PARKWAY
 - IL 53 (BOLINGBROOK DR) AT BEACON RIDGE DR
 - IL 53 (BOLINGBROOK DR) AT LILY CACHE LANE
 - IL 53 (BOLINGBROOK DR) AT OLD CHICAGO DRIVE
 - BRIGGS STREET AT WASHINGTON STREET
 - 1-80 NORTH RAMP AT HOUBOLT ROAD
 - 1-80 SOUTH RAMP AT HOUBOLT ROAD
 - IL 171 (COLLINS ST) AT COLUMBIA STREET
 - IL 171 (COLLINS ST) AT OHIO STREET
 - IL 53 (BROADWAY ST) AT INGALLS AVENUE
 - IL 53 (BROADWAY ST) AT RUBY STREET
 - IL 53 (OTTAWA ST) AT CLINTON STREET
 - IL 53 (OTTAWA ST) AT WASHINGTON STREET
 - IL 53 (SCOTT ST) AT CLINTON STREET
 - IL 53 (SCOTT ST) AT VAN BUREN STREET

- NO. INTERSECTION
- IL 53 (SCOTT ST) AT CLAY STREET
 - IL 53 (SCOTT ST) AT JACKSON STREET
 - IL 53 (SCOTT ST) AT OHIO STREET
 - IL 7 (LARKIN AV) AT BLACK ROAD
 - IL 7 (LARKIN AV) AT GLENWOOD AVENUE
 - IL 7 (LARKIN AV) AT INGALLS AVENUE
 - IL 7 (LARKIN AV) AT McDONOUGH STREET
 - IL 7 (LARKIN AV) AT SAM'S CLUB / WAL-MART ENTRANCE
 - IL 7 (LARKIN AV) AT NORTHRIDGE PLAZA
 - IL 7 (THEODORE ST) AT RAYNOR AVENUE
 - U.S. 30 (CASS ST) AT CHICAGO STREET
 - U.S. 30 (CASS ST) AT HENDERSON AVENUE
 - U.S. 30 (CASS ST) AT IL 53 (OTTAWA ST)
 - U.S. 30 (CASS ST) AT JOLIET STREET
 - U.S. 30 (CASS ST) AT U.S. 6 (COLLINS ST)
 - U.S. 30 (CASS ST) AT EASTERN AVENUE
 - U.S. 30 (CASS ST) AT IL 53 (SCOTT ST)
 - U.S. 30 (PLAINFIELD RD) AT RAYNOR AVENUE / BLACK ROAD
 - U.S. 30 (JEFFERSON ST) AT CHICAGO STREET
 - U.S. 30 (JEFFERSON ST) AT HICKORY STREET

- NO. INTERSECTION
- U.S. 30 (JEFFERSON ST) AT IL 53 (OTTAWA ST)
 - U.S. 30 (JEFFERSON ST) AT IL 53 (SCOTT ST)
 - U.S. 30 (JEFFERSON ST) AT JOLIET STREET
 - U.S. 30 (JEFFERSON ST) AT U.S. 30 (CENTER ST)
 - U.S. 30 (JEFFERSON ST) AT EASTERN AVENUE
 - U.S. 30 (LINCOLN HWY / CASS ST) AT WALNUT STREET
 - U.S. 30 (PLAINFIELD RD) AT INGALLS AVENUE
 - U.S. 30 (PLAINFIELD RD) AT HENNEPIN DRIVE
 - U.S. 30 (PLAINFIELD RD) AT ESSINGTON ROAD / MALL LOOP DRIVE
 - U.S. 30 (PLAINFIELD RD) AT VOYAGER DRIVE
 - U.S. 30 (WESTERN AV) AT HICKORY STREET
 - U.S. 30 (WESTERN AV) AT U.S. 30 (CENTER ST)
 - U.S. 52 (JEFFERSON ST) AT BARNEY DRIVE
 - U.S. 52 (JEFFERSON ST) AT CATERPILLAR DRIVE
 - U.S. 52 (JEFFERSON ST) AT ESSINGTON ROAD
 - U.S. 52 (JEFFERSON ST) AT HAMMES AVENUE
 - U.S. 52 (JEFFERSON ST) AT HOUBOLT ROAD
 - U.S. 52 (JEFFERSON ST) AT IL 7 (LARKIN AV)
 - U.S. 52 (JEFFERSON ST) AT 129TH INFANTRY DRIVE
 - U.S. 52 (JEFFERSON ST) AT MIDLAND AVENUE

- NO. INTERSECTION
- U.S. 52 (JEFFERSON ST) AT RAYNOR AVENUE
 - U.S. 52 (JEFFERSON ST) AT REED STREET
 - U.S. 52 (JEFFERSON ST) AT SPRINGFIELD AVENUE
 - U.S. 52 (JEFFERSON ST) AT STRYKER AVENUE / WOODLAWN AVENUE
 - U.S. 6 (CHANNAHON RD) AT HOLLYWOOD BOULEVARD
 - U.S. 6 - U.S. 30 (COLLINS AV) AT JOLIET HIGH SCHOOL
 - U.S. 6 (CHANNAHON RD) AT EMPRESS ROAD / BUSH PARKWAY
 - U.S. 6 (CHANNAHON RD) AT CATERPILLAR EAST DRIVE
 - U.S. 6 (CHANNAHON RD) AT CATERPILLAR WEST DRIVE / JOHNS MANVILLE DRIVE
 - U.S. 6 - IL 171 (COLLINS ST) AT U.S. 6 (JACKSON ST)
 - U.S. 6 (JACKSON ST) AT HENDERSON AVENUE
 - U.S. 6 (MAPLE RD) AT BRIGGS STREET / FERNWOOD AVENUE
 - U.S. 6 (MAPLE RD) AT WALNUT AVENUE / DRAPER AVENUE
 - U.S. 6 - U.S. 30 (JEFFERSON ST) AT RICHARDS STREET AND RICHARDS STREET AT WASHINGTON STREET
 - U.S. 6 - U.S. 52 (McDONOUGH ST) AT IL 53 (CHICAGO ST)
 - U.S. 6 (CHANNAHON RD) AT McCLINTOCK ROAD
 - IL 53 (OTTAWA ST) AT JACKSON STREET
 - IL 53 SOUTHBOUND (OTTAWA ST) AT VAN BUREN STREET
 - US 52 (RAYNOR AV) AT MARION STREET
 - US 52 (RAYNOR AV) AT US 52 (McDONOUGH ST)

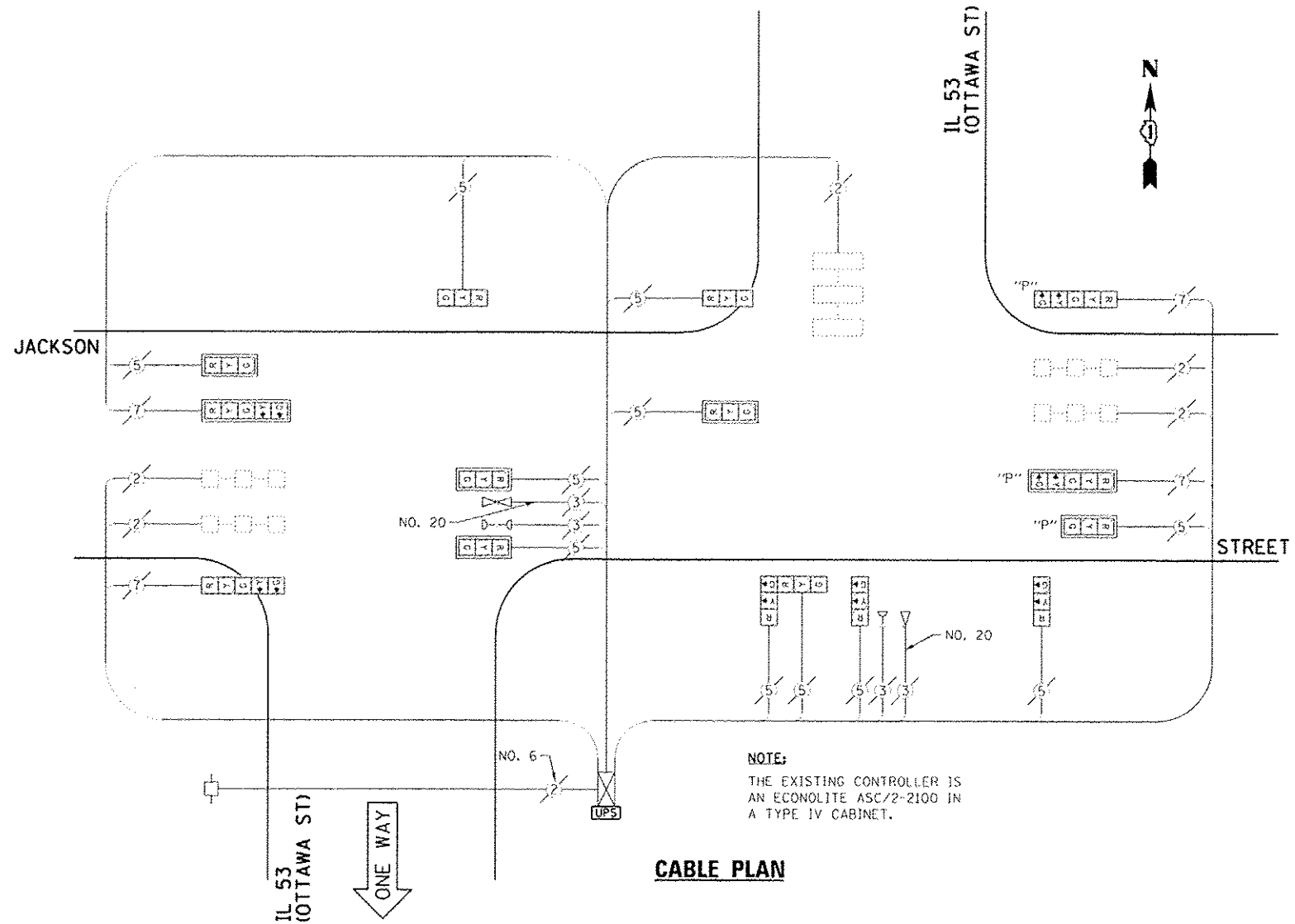
0042

Rev. 6-5-13

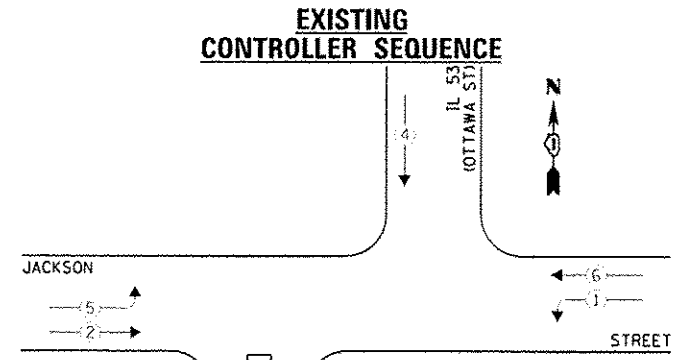
FILE NAME: 60W21-007-500.dgn	USER NAME: gwhiston	DESIGNED - JRD	REVISED - 05-24-13	STATE OF ILLINOIS DEPARTMENT OF TRANSPORTATION	SUMMARY OF QUANTITIES (SHEET 3 OF 3)	F.A. RTE.	SECTION	COUNTY	TOTAL SHEETS	SHEET NO.	
MODEL NAME:	PLOT SCALE: 1/4"	DRAWN - GWJ	REVISED -			VAR	2013-003-1	WILL	89	7	
	PLOT DATE: 5/24/2013	CHECKED - KLB	REVISED -			CONTRACT NO. 60W21					
		DATE - 03-28-13	REVISED -			ILLINOIS FED. AID PROJECT					

SCHEDULE OF QUANTITIES
IL 53 (OTTAWA ST) AT JACKSON STREET

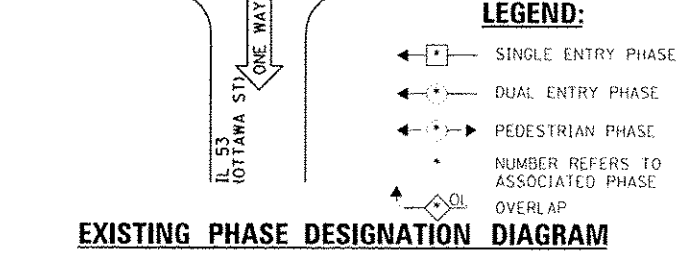
NO.	QUANT.	UNIT	DESCRIPTION
1.	1	EACH	MAINTENANCE OF EXISTING TRAFFIC SIGNAL INSTALLATION
2.	1	EACH	MODIFY EXISTING CONTROLLER CABINET
3.	1	EACH	UNINTERRUPTIBLE POWER SUPPLY, SPECIAL



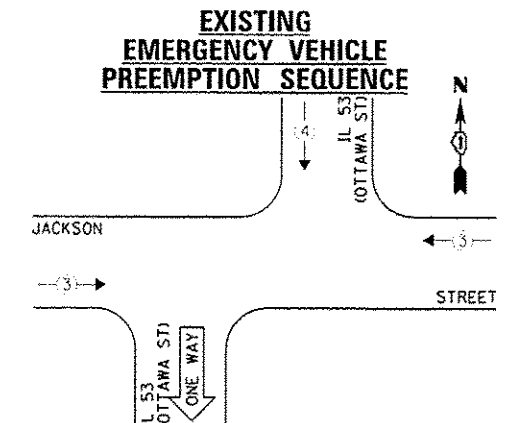
CABLE PLAN



EXISTING CONTROLLER SEQUENCE



EXISTING PHASE DESIGNATION DIAGRAM



EXISTING EMERGENCY VEHICLE PREEMPTION SEQUENCE

EXISTING EMERGENCY VEHICLE PREEMPTORS			
EMERGENCY VEHICLE PREEMPTOR	3	4	
MOVEMENT	—		

I.D.O.T. TRAFFIC SIGNAL INSTALLATION ELECTRICAL SERVICE REQUIREMENTS				TOTAL WATTAGE	
TYPE	NO. LAMPS	INCAND. L.E.D.	OPERATION		
SIGNAL (RED)	15	135	17	0.50	127.5
SIGNAL (YELLOW)	15	135	25	0.25	93.75
SIGNAL (GREEN)	15	135	15	0.25	56.25
ARROW	8	135	12	0.10	9.6
PLD. SIGNAL	-	90	25	1.00	-
CONTROLLER	1	-	100	1.00	100.0
LUMINAIRE	-	-	250	0.50	-
L.E.D. ST. NAME SIGN	-	-	64	0.50	-
VIDEO SYSTEM	-	-	150	1.00	-
BATTERY BACKUP	1	-	25	1.00	25.0
ILLUMINATED SIGN	-	-	25	0.05	-
TOTAL =					412.1

ENERGY COSTS - BILLED TO: IL DEPT. OF TRANSPORTATION
ADDRESS: 201 B. CENTER COURT
ADDRESS: SCHAMBURG, IL 60196-1096
ENERGY SUPPLY - CONTACT: TIM COSLET
PHONE: 615-724-5010
COMPANY: COMED - JOLLET

THE TRAFFIC SIGNAL CONTROL EQUIPMENT FOR THIS PROJECT SHALL BE "ECONOLITE" TO MATCH THE EXISTING ADJACENT SYSTEM.

FILE NAME: 809A-Jackson and Ottawa.dgn	USER NAME: gphiston	DESIGNED - JRD	REVISED - 05-24-13
Default	PLOT SCALE: 1/2"=1'	DRAWN - CW3	REVISED -
	PLOT DATE: 5/24/2013	CHECKED - KLB	REVISED -
		DATE - 05/24/13	REVISED -

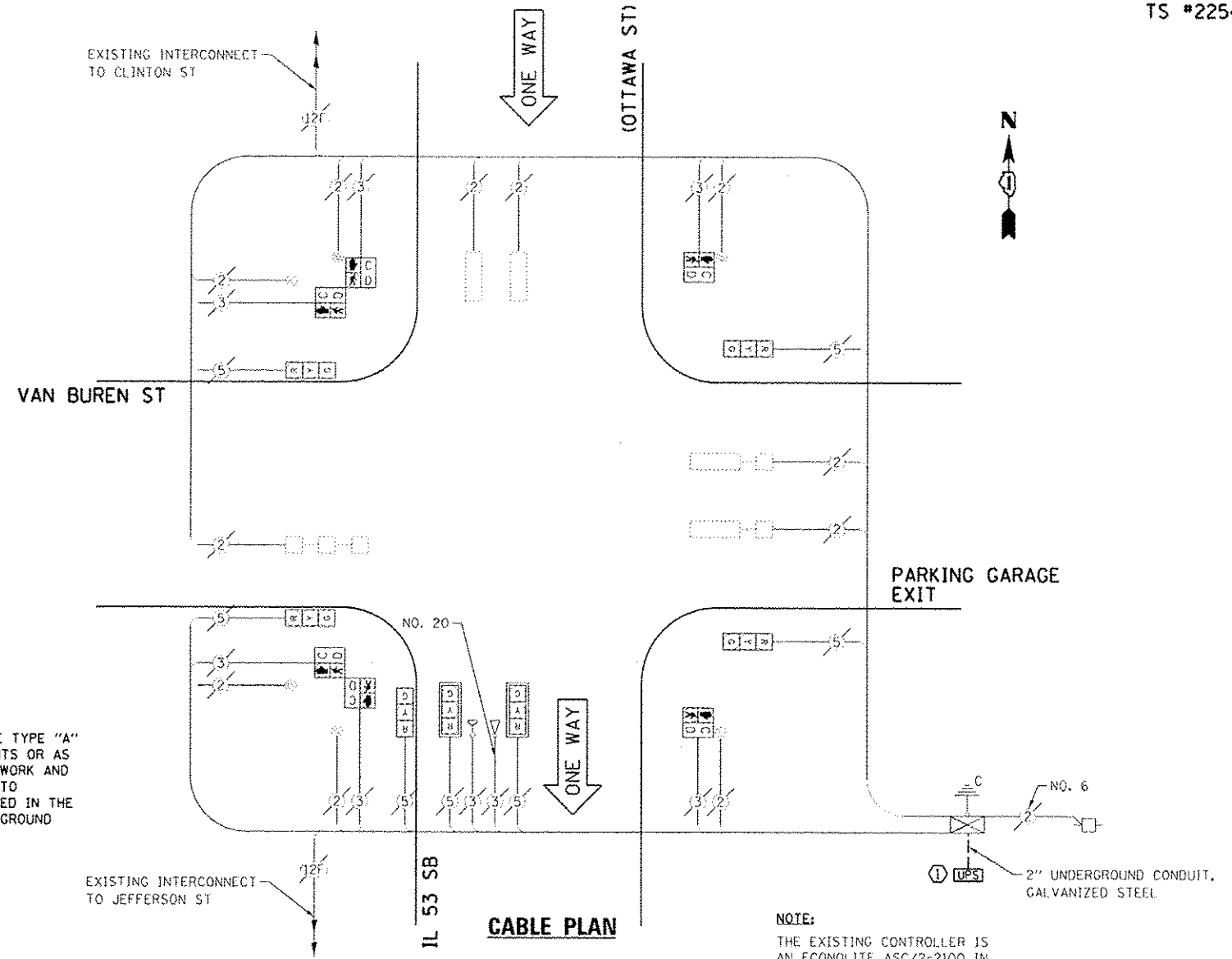
STATE OF ILLINOIS
DEPARTMENT OF TRANSPORTATION

SCHEDULE OF QUANTITIES, CABLE PLAN, PHASE DESIGNATION DIAGRAM, & EMERGENCY VEHICLE PREEMPTION SEQUENCE
IL 53 (OTTAWA ST) AT JACKSON STREET

F.A. RTE. VAR	SECTION 2013-003-1	COUNTY WILL	TOTAL SHEETS 89	SHEET NO. 89A
CONTRACT NO. 60W21				ILLINOIS FED. AID PROJECT

SCHEDULE OF QUANTITIES
IL 53 SOUTHBOUND (OTTAWA ST) AT VAN BUREN STREET

NO.	QUANT.	UNIT	DESCRIPTION
1.	1	EACH	MAINTENANCE OF EXISTING TRAFFIC SIGNAL INSTALLATION
2.	1	EACH	UNINTERRUPTIBLE POWER SUPPLY, GROUND MOUNTED

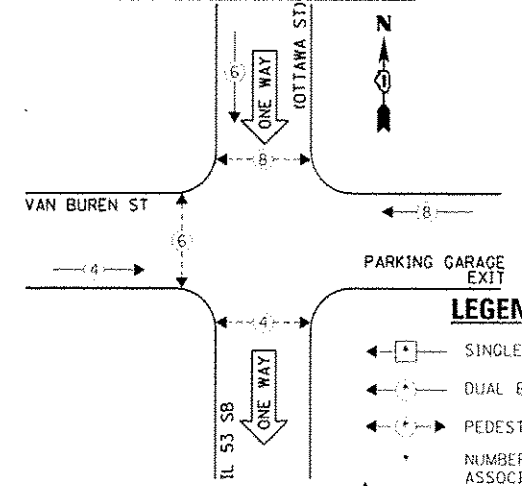


CONSTRUCTION NOTE:

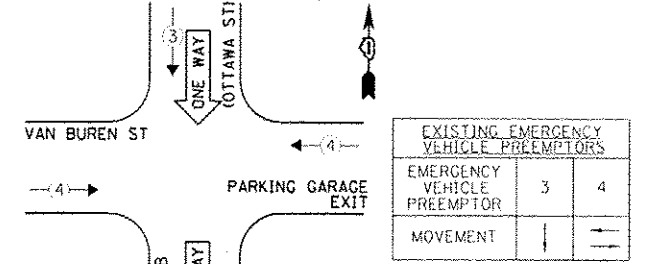
① THE UPS SHALL BE INSTALLED ON A SEPARATE TYPE "A" FOUNDATION DUE TO THE PHYSICAL CONSTRAINTS OR AS DIRECTED BY THE RESIDENT ENGINEER. THIS WORK AND ALL CONDUIT AND ELECTRICAL CABLE NEEDED TO PROPERLY INSTALL THE UPS SHALL BE INCLUDED IN THE PAY ITEM "UNINTERRUPTIBLE POWER SUPPLY, GROUND MOUNTED".

NOTE:
 THE EXISTING CONTROLLER IS AN ECONOLITE ASC/2-2100 IN A TYPE III CABINET.

EXISTING CONTROLLER SEQUENCE



EXISTING EMERGENCY VEHICLE PREEMPTION SEQUENCE



I.D.O.T. TRAFFIC SIGNAL INSTALLATION ELECTRICAL SERVICE REQUIREMENTS				TOTAL WATTAGE	
TYPE	NO. LAMPS	INCAND. L.E.D.	OPERATION		
SIGNAL (RED)	7	135	17	0.90	59.5
SIGNAL (YELLOW)	7	135	25	0.25	43.75
SIGNAL (GREEN)	7	135	15	0.25	26.25
ARROW	6	135	12	0.10	-
FLD. SIGNAL	-	90	25	1.00	150.0
CONTROLLER	1	-	100	1.00	100.0
LUMINAIRE	-	-	250	0.50	-
L.E.D. ST. NAME SIGN	-	-	64	0.50	-
VIDEO SYSTEM	-	-	150	1.00	-
BATTERY BACKUP	1	-	25	1.00	25.0
ILLUMINATED SIGN	-	-	25	0.05	-
TOTAL =					404.5

THE TRAFFIC SIGNAL CONTROL EQUIPMENT FOR THIS PROJECT SHALL BE "ECONOLITE" TO MATCH THE EXISTING ADJACENT SYSTEM.

ENERGY COSTS - BILLED TO: IL DEPT. OF TRANSPORTATION
 (ADDRESS) 201 W. CENTER COURT
 (ADDRESS) SCHAMBURG, IL 60196-1096
 ENERGY SUPPLY - CONTACT: TIM COSLEY
 PHONE: 815-724-5010
 COMPANY: COMED - JOLIET

FILE NAME: 0990-Van Buren and Ottawa.dgn	USER NAME: gwhitten	DESIGNED - KLB	REVISED - 05-24-13
Default	PLOT SCALE: 1/20	DRAWN - GWS	REVISED -
	PLOT DATE: 5/24/2013	CHECKED - KLB	REVISED -
		DATE - 05/24/13	REVISED -

STATE OF ILLINOIS
 DEPARTMENT OF TRANSPORTATION

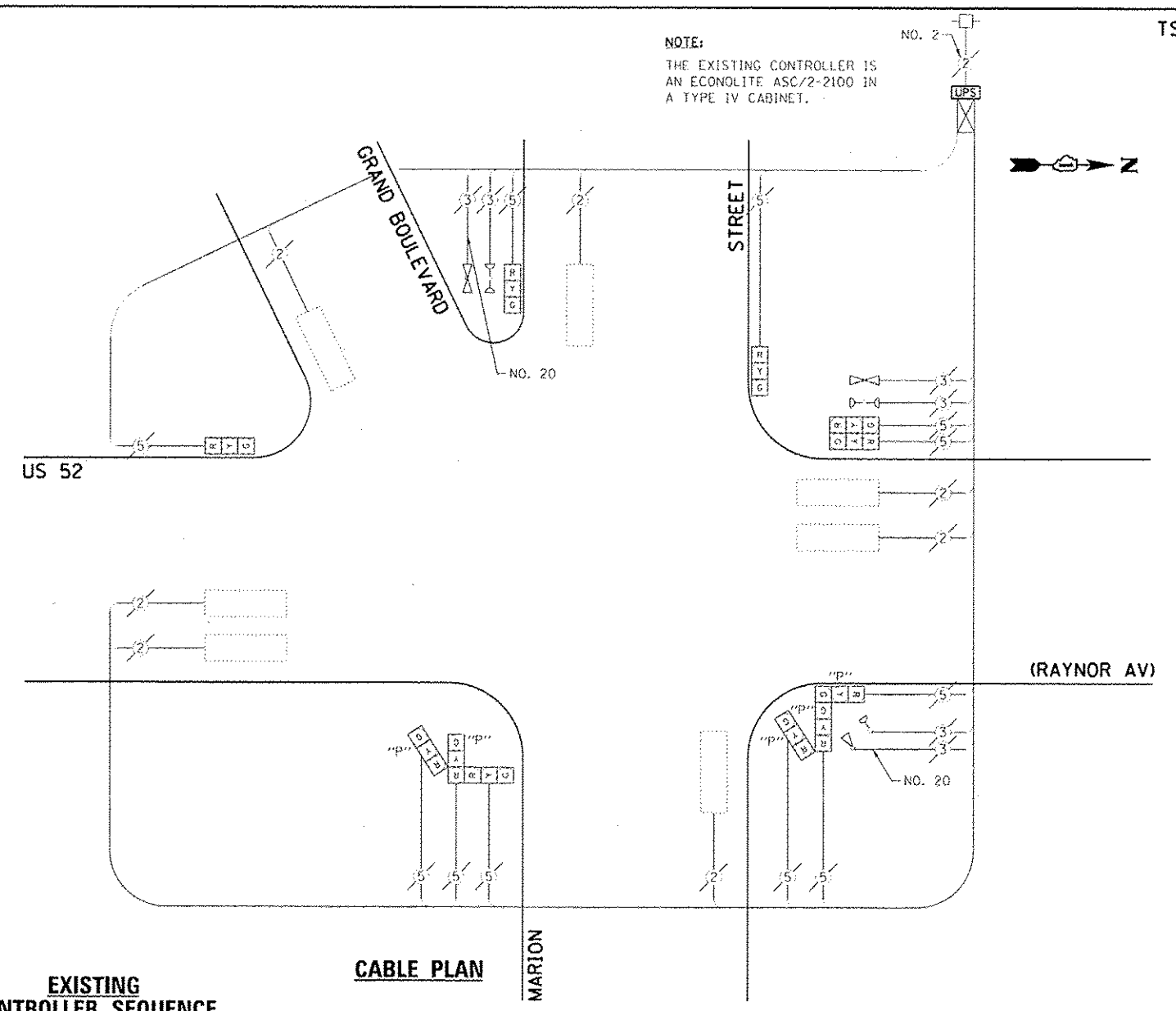
SCHEDULE OF QUANTITIES, CABLE PLAN, PHASE DESIGNATION DIAGRAM, & EMERGENCY VEHICLE PREEMPTION SEQUENCE
 IL 53 SOUTHBOUND (OTTAWA ST) AT VAN BUREN STREET

F.A. RY. VAR.	SECTION 2013-003-1	COUNTY WILL	TOTAL SHEETS 89	SHEET NO. 89B
SCALE: SHEET OF SHEETS STA. TO STA.				CONTRACT NO. 60W21
ILLINOIS FED. AID PROJECT				

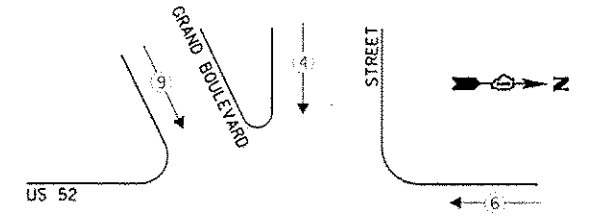
SCHEDULE OF QUANTITIES
US 52 (RAYNOR AV) AT MARION STREET

NO.	QUANT.	UNIT	DESCRIPTION
1.	1	EACH	MAINTENANCE OF EXISTING TRAFFIC SIGNAL INSTALLATION
2.	1	EACH	MODIFY EXISTING CONTROLLER CABINET
3.	1	EACH	UNINTERRUPTIBLE POWER SUPPLY, SPECIAL

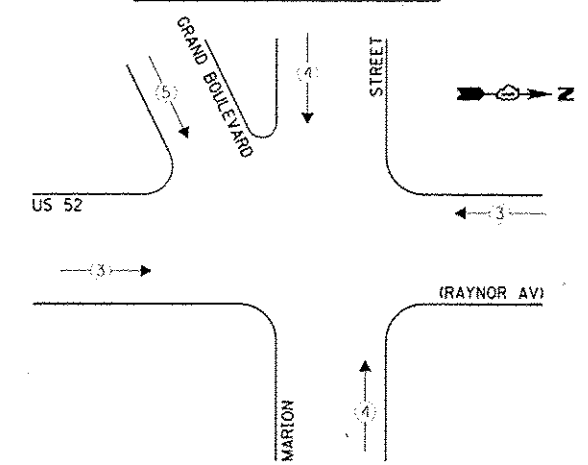
NOTE:
THE EXISTING CONTROLLER IS AN ECONOLITE ASC/2-2100 IN A TYPE IV CABINET.



EXISTING CONTROLLER SEQUENCE



EXISTING EMERGENCY VEHICLE PREEMPTION SEQUENCE



LEGEND:

- ◀ ◻ ▶ SINGLE ENTRY PHASE
- ◀ ◻ ◻ ▶ DUAL ENTRY PHASE
- ◀ ◻ ◻ ◻ ▶ PEDESTRIAN PHASE
- NUMBER REFERS TO ASSOCIATED PHASE
- ◀ ◻ ◻ ▶ OVERLAP

EXISTING PHASE DESIGNATION DIAGRAM

EXISTING EMERGENCY VEHICLE PREEMPTORS		
EMERGENCY VEHICLE PREEMPTOR	3	4
MOVEMENT		

I.D.O.T. TRAFFIC SIGNAL INSTALLATION ELECTRICAL SERVICE REQUIREMENTS				TOTAL WATTAGE	
TYPE	NO. LAMPS	WATTAGE	OPERATION		
SIGNAL (RED)	11	135	17	0.50	93.5
SIGNAL (YELLOW)	11	135	25	0.25	68.75
SIGNAL (GREEN)	11	135	15	0.25	41.25
ARROW	-	135	12	0.10	-
PEL. SIGNAL	-	90	25	1.00	-
CONTROLLER	1	-	100	1.00	100.0
LUMINAIRE	-	-	250	0.50	-
L.E.D. ST. NAME SIGN	-	-	64	0.50	-
VIDEO SYSTEM	-	-	150	1.00	-
BATTERY BACKUP	1	-	25	1.00	25.0
ILLUMINATED SIGN	-	-	25	0.05	-
TOTAL =					328.5

ENERGY COSTS - BILLED TO: IL DEPT. OF TRANSPORTATION
(ADDRESS) 201 W. CENTER COURT
(ADDRESS) SCHUMBERG, IL 60196-1096
ENERGY SUPPLY - CONTACT: TIM COSLET
PHONE: 815-724-5010
COMPANY: COMED - JOLIET

THE TRAFFIC SIGNAL CONTROL EQUIPMENT FOR THIS PROJECT SHALL BE "ECONOLITE" TO MATCH THE EXISTING ADJACENT SYSTEM.

FILE NAME -	USER NAME - gwhitten	DESIGNED - JRD	REVISED - 05-24-13
BB9C-Raynor and Marion.dgn		DRAWN - GW3	REVISED -
Defaults	PLOT SCALE - 1/20	CHECKED - KLB	REVISED -
	PLOT DATE - 5/24/2013	DATE - 05/24/13	REVISED -

STATE OF ILLINOIS
DEPARTMENT OF TRANSPORTATION

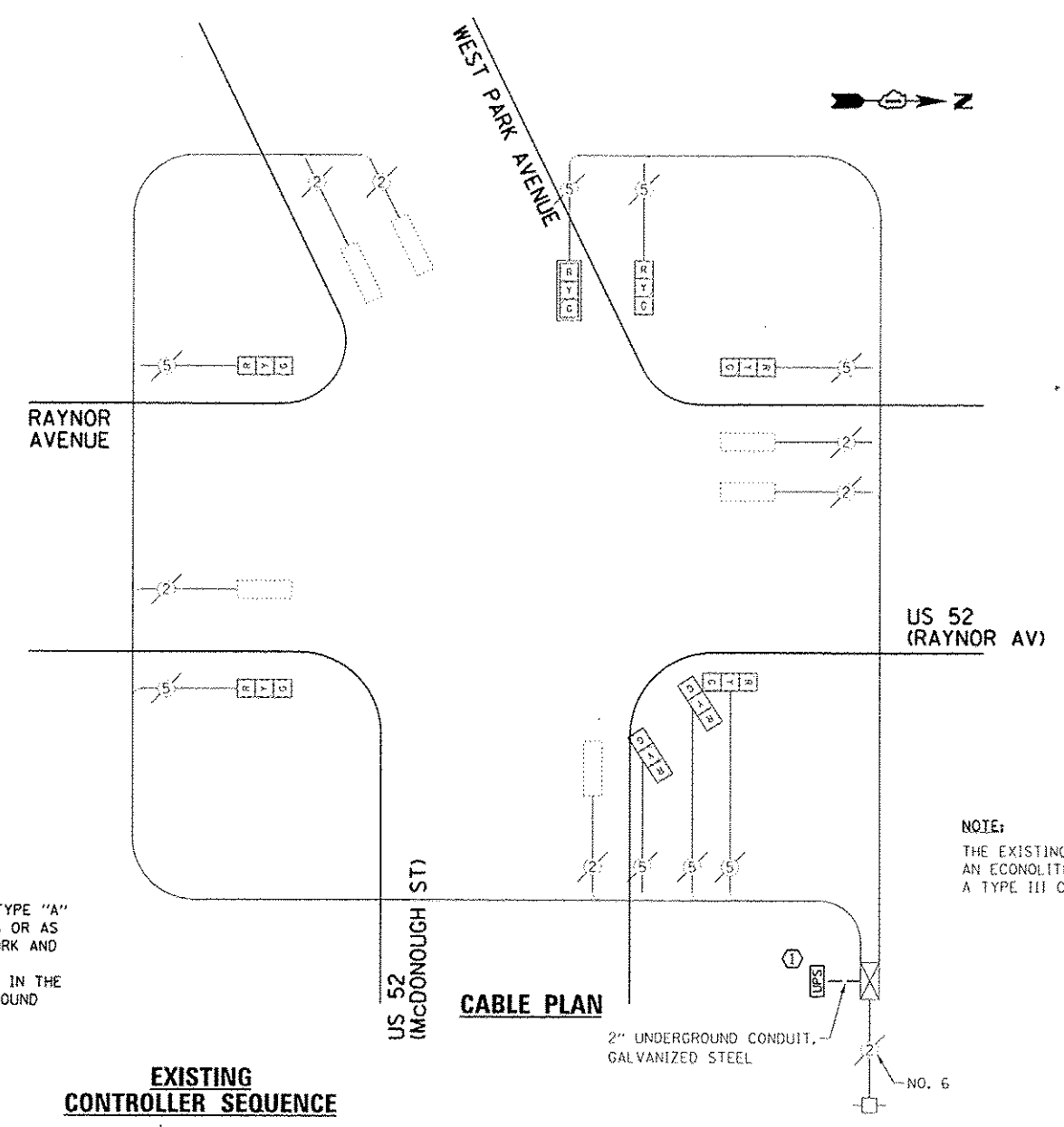
SCHEDULE OF QUANTITIES, CABLE PLAN, PHASE DESIGNATION DIAGRAM, & EMERGENCY VEHICLE PREEMPTION SEQUENCE
US 52 (RAYNOR AV) AT MARION STREET

F.A. RTE. VAR	SECTION 2013-003-1	COUNTY WILL	TOTAL SHEETS 89	SHEET NO. 89C
SCALE: SHEET OF SHEETS STA. TO STA.				CONTRACT NO. 60W21
ILLINOIS FED. AID PROJECT				

GHA #4085.888

SCHEDULE OF QUANTITIES
US 52 (RAYNOR AV) AT US 52 (McDONOUGH ST)

NO.	QUANT.	UNIT	DESCRIPTION
1.	1	EACH	MAINTENANCE OF EXISTING TRAFFIC SIGNAL INSTALLATION
2.	1	EACH	UNINTERRUPTIBLE POWER SUPPLY, GROUND MOUNTED

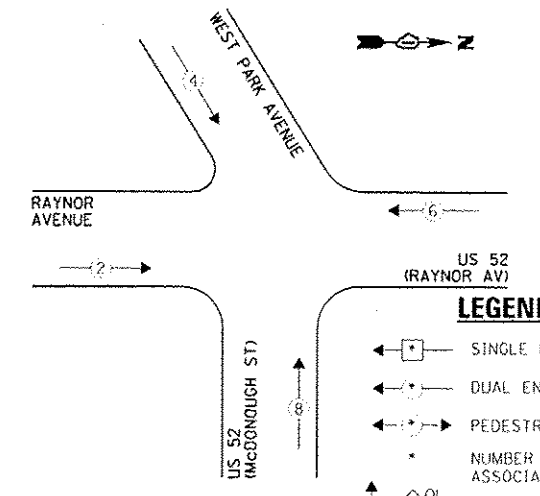


CONSTRUCTION NOTE:

① THE UPS SHALL BE INSTALLED ON A SEPARATE TYPE "A" FOUNDATION DUE TO THE PHYSICAL CONSTRAINTS OR AS DIRECTED BY THE RESIDENT ENGINEER. THIS WORK AND ALL CONDUIT AND ELECTRICAL CABLE NEEDED TO PROPERLY INSTALL THE UPS SHALL BE INCLUDED IN THE PAY ITEM "UNINTERRUPTIBLE POWER SUPPLY, GROUND MOUNTED".

NOTE:
THE EXISTING CONTROLLER IS AN ECONOLITE ASC/2-2100 IN A TYPE III CABINET.

EXISTING CONTROLLER SEQUENCE



- LEGEND:**
- ◀ [Symbol] ▶ SINGLE ENTRY PHASE
 - ◀ [Symbol] ▶ DUAL ENTRY PHASE
 - ◀ [Symbol] ▶ PEDESTRIAN PHASE
 - * NUMBER REFERS TO ASSOCIATED PHASE
 - ◀ [Symbol] ▶ OVERLAP

EXISTING PHASE DESIGNATION DIAGRAM

I.D.O.T. TRAFFIC SIGNAL INSTALLATION ELECTRICAL SERVICE REQUIREMENTS

TYPE	NO. LAMPS	WATTAGE		OPERATION	TOTAL WATTAGE
		INCAND.	L.E.D.		
SIGNAL (RED)	8	135	17	0.50	68.0
SIGNAL (YELLOW)	8	135	25	0.25	50.0
SIGNAL (GREEN)	8	135	15	0.25	30.0
ARROW	-	135	12	0.10	-
PED. SIGNAL	-	90	25	1.00	-
CONTROLLER	1	-	100	1.00	100.0
LUMINAIRE	-	-	250	0.50	-
L.E.D. ST. NAME SIGN	-	-	64	0.50	-
VIDEO SYSTEM	-	-	150	1.00	-
BATTERY BACKUP	1	-	25	1.00	25.0
ILLUMINATED SIGN	-	-	25	0.05	-
TOTAL =					273.0

ENERGY COSTS - BILLED TO: IL DEPT. OF TRANSPORTATION
(ADDRESS) 201 W. CENTER COURT
(ADDRESS) SCHAMBERG, IL 60196-1096
ENERGY SUPPLY - CONTACT: TIM COSLET
PHONE: 815-724-5010
COMPANY: COMED - JOLIET

THE TRAFFIC SIGNAL CONTROL EQUIPMENT FOR THIS PROJECT SHALL BE "ECONOLITE" TO MATCH THE EXISTING ADJACENT SYSTEM.

FILE NAME: 0890-Raynor and McDonough.txd	USER NAME: gwhitten	DESIGNED - JRD	REVISED - 05-24-13
Default	PLOT SCALE: 1/32"	DRAWN - CW3	REVISED -
	PLOT DATE: 5/24/2013	CHECKED - KLB	REVISED -
		DATE - 05/24/13	REVISED -

STATE OF ILLINOIS
DEPARTMENT OF TRANSPORTATION

SCHEDULE OF QUANTITIES, CABLE PLAN, PHASE DESIGNATION DIAGRAM, & EMERGENCY VEHICLE PREEMPTION SEQUENCE
US 52 (RAYNOR AV) AT US 52 (McDONOUGH ST)

SCALE: SHEET OF SHEETS STA. TO STA.

F.A. RTE. VAR	SECTION 2013-003-1	COUNTY WILL	TOTAL SHEETS 89	SHEET NO. 89D	CONTRACT NO. 60W21
GHA #4085.888					ILLINOIS FED. AID PROJECT