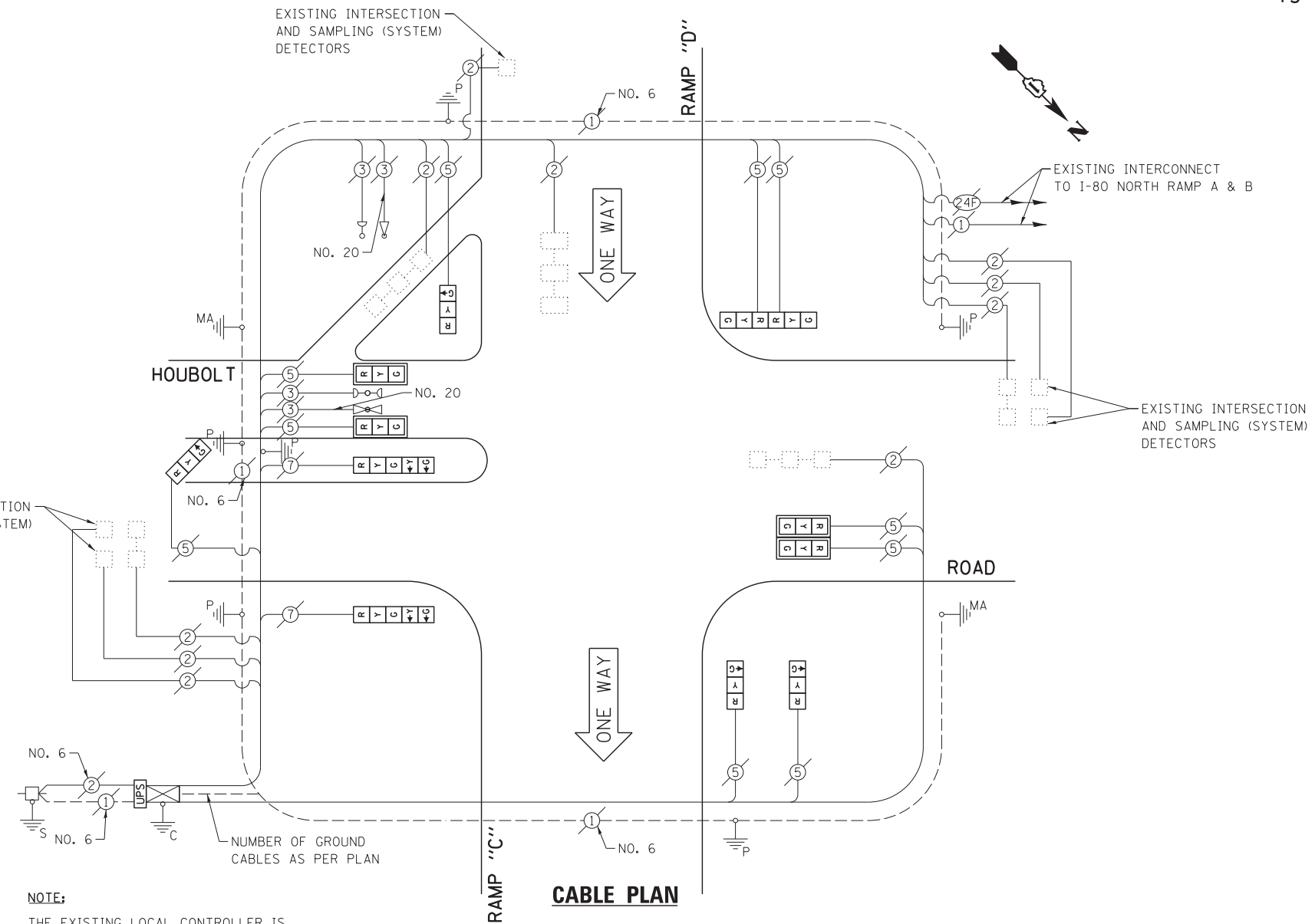


SCHEDULE OF QUANTITIES
I-80 SOUTH RAMP AT HOUBOLT ROAD

NO.	QUANT.	UNIT	DESCRIPTION
1.	1	EACH	MAINTENANCE OF EXISTING TRAFFIC SIGNAL INSTALLATION
2.	4	EACH	SIGNAL HEAD, LED, 1-FACE, 3-SECTION, MAST-ARM MOUNTED
3.	4	EACH	SIGNAL HEAD, LED, 1-FACE, 3-SECTION, BRACKET MOUNTED
4.	2	EACH	SIGNAL HEAD, LED, 1-FACE, 5-SECTION, BRACKET MOUNTED
5.	1	EACH	SIGNAL HEAD, LED, 2-FACE, 3-SECTION, BRACKET MOUNTED
6.	4	EACH	TRAFFIC SIGNAL BACKPLATE, LOUVERED, ALUMINUM
7.	1	EACH	MODIFY EXISTING CONTROLLER CABINET
8.	1	EACH	REMOVE EXISTING TRAFFIC SIGNAL EQUIPMENT
9.	1	EACH	UNINTERRUPTIBLE POWER SUPPLY, SPECIAL



THE FOLLOWING ITEMS SHALL BE REMOVED BY THE CONTRACTOR AND SHALL BE DISPOSED OF BY THEM OUTSIDE THE RIGHT-OF-WAY AT THEIR EXPENSE. THE SALVAGE VALUE OF THE REMOVED EQUIPMENT SHALL BE REFLECTED IN THE CONTRACT BID PRICE.

- 8 EACH TRAFFIC SIGNAL HEAD, 3-SECTION, 1-FACE
- 2 EACH TRAFFIC SIGNAL HEAD, 5-SECTION, 1-FACE
- 1 EACH TRAFFIC SIGNAL HEAD, 3-SECTION, 2-FACE
- 4 EACH TRAFFIC SIGNAL BACKPLATE

I.D.O.T. TRAFFIC SIGNAL INSTALLATION ELECTRICAL SERVICE REQUIREMENTS					TOTAL WATTAGE
TYPE	NO. LAMPS	INCAND.	L.E.D.	OPERATION	
SIGNAL (RED)	12	135	17	0.50	102.0
SIGNAL (YELLOW)	12	135	25	0.25	75.0
SIGNAL (GREEN)	12	135	15	0.25	45.0
ARROW	4	135	12	0.10	4.8
PED. SIGNAL	-	90	25	1.00	-
CONTROLLER	1	-	100	1.00	100.0
LUMINAIRE	-	-	250	0.50	-
L.E.D. ST. NAME SIGN	-	-	64	0.50	-
VIDEO SYSTEM	-	-	150	1.00	-
BATTERY BACKUP	1	-	25	1.00	25.0
ILLUMINATED SIGN	-	-	25	0.05	-
TOTAL =					351.8

ENERGY COSTS - BILLED TO: IL DEPT. OF TRANSPORTATION
(ADDRESS) 201 W. CENTER COURT
(ADDRESS) SCHAUMBURG, IL 60196-1096
ENERGY SUPPLY - CONTACT: TIM COSLET
PHONE: 815-724-5010
COMPANY: COMED - JOLIET

THE TRAFFIC SIGNAL CONTROL EQUIPMENT FOR THIS PROJECT SHALL BE "ECONOLITE" TO MATCH THE EXISTING ADJACENT SYSTEM.

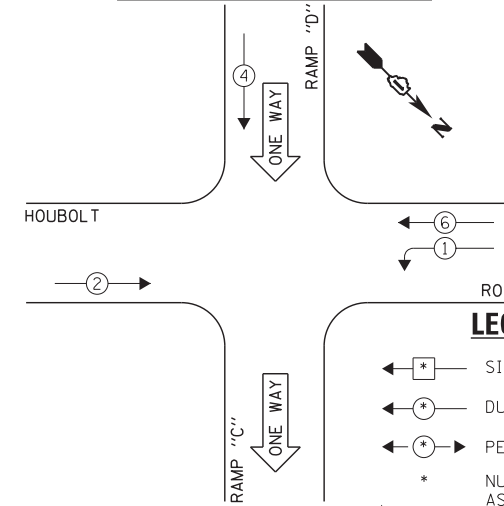
FILE NAME = 60W21-025-180 South Ramp@Houbolt Ave.dgn	USER NAME = gwhitten	DESIGNED - JRD	REVISED -
PLOT SCALE = 1:20	CHECKED - KLB	DRAWN - GW3	REVISED -
PLOT DATE = 3/28/2013	DATE - 03-28-13		REVISED -

STATE OF ILLINOIS
DEPARTMENT OF TRANSPORTATION

SCHEDULE OF QUANTITIES, CABLE PLAN, PHASE DESIGNATION DIAGRAM & EMERGENCY VEHICLE PREEMPTION SEQUENCE
I-80 SOUTH RAMP AT HOUBOLT ROAD

SCALE: SHEET OF SHEETS STA. TO STA.

EXISTING CONTROLLER SEQUENCE

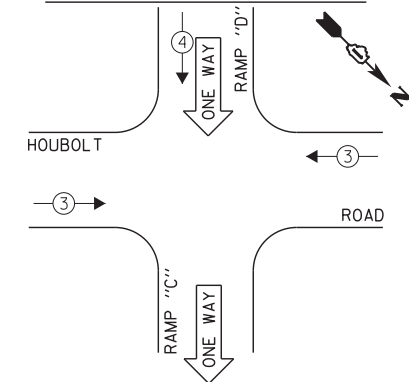


EXISTING PHASE DESIGNATION DIAGRAM

LEGEND:

- ← * → SINGLE ENTRY PHASE
- ← * → DUAL ENTRY PHASE
- ← * → PEDESTRIAN PHASE
- * NUMBER REFERS TO ASSOCIATED PHASE
- ← * → OL OVERLAP

EXISTING EMERGENCY VEHICLE PREEMPTION SEQUENCE



EXISTING EMERGENCY VEHICLE PREEMPTORS			
EMERGENCY VEHICLE PREEMPTOR	3	4	
MOVEMENT	←	→	↓

F.A. RTE.	SECTION	COUNTY	TOTAL SHEETS	SHEET NO.
VAR	2013-003-I	WILL	89	25
CONTRACT NO. 60W21				
ILLINOIS FED. AID PROJECT				