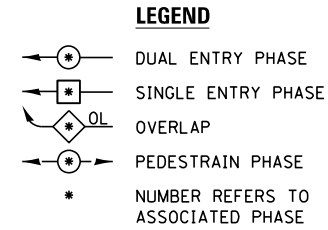
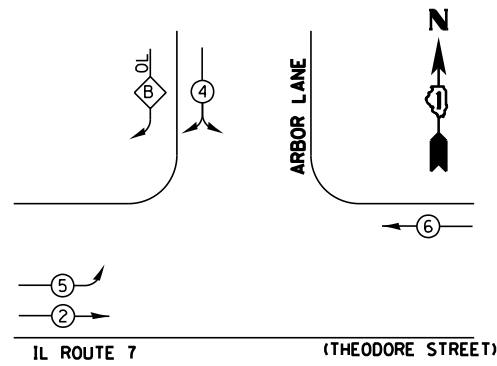


EXISTING CONTROLLER SEQUENCE

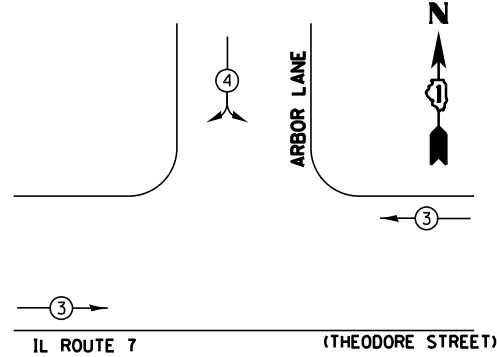


RIGHT TURN OVERLAP PHASE DESIGNATION

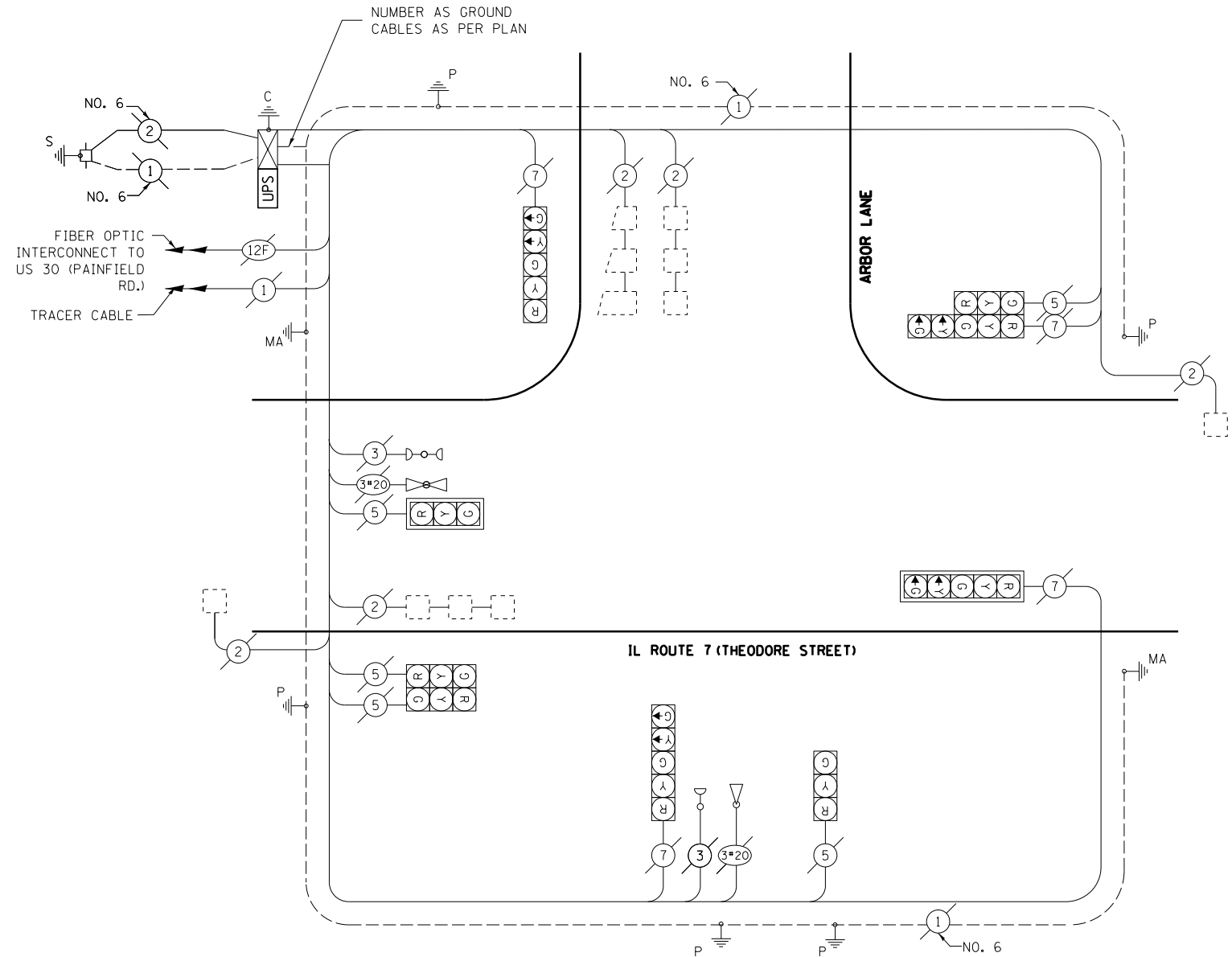
OVERLAP LETTER	PERMISSIVE PHASE	PROTECTED PHASE
B	= 4	+ 5

PHASE DESIGNATION DIAGRAM

EXISTING EMERGENCY VEHICLE PREEMPTION SEQUENCE



EMERGENCY VEHICLE PREEMPTORS		
EMERGENCY VEHICLE PREEMPTOR	3	4
MOVEMENT	←→	↗



CABLE PLAN

SCHEDULE OF QUANTITIES

QTY	UNIT	ITEM
1	EACH	MAINTENANCE OF EXISTING TRAFFIC SIGNAL INSTALLATION
1	EACH	MODIFY EXISTING CONTROLLER CABINET
1	EACH	UNINTERRUPTABLE POWER SUPPLY, SPECIAL

I.D.O.T. TRAFFIC SIGNAL INSTALLATION ELECTRICAL SERVICE REQUIREMENTS					TOTAL WATTAGE
TYPE	NO. OF LAMPS	WATTAGE INCAND.	LED	% OPERATION	
SIGNAL (RED)	9		17	0.50	76.5
(YELLOW)	9		25	0.25	56.2
(GREEN)	9		15	0.25	33.7
ARROW	8		12	0.10	9.6
PED. SIGNAL	-		25	1.00	
CONTROLLER	1		100	1.00	100.0
ILLUM. SIGN	-		25	0.05	
VIDEO SYSTEM	-		150	1.00	
FLASHER				0.50	
ENERGY COSTS TO:					TOTAL = 274.0

ILLINOIS DEPARTMENT OF TRANSPORTATION
 DIVISION OF HIGHWAY/DISTRICT 1
 201 WEST CENTER COURT/SCHAUMBURG, ILLINOIS 60196-1096
 ENERGY SUPPLY: CONTACT: JIM ORELUK
 PHONE: 815-727-5028
 COMPANY: COM ED

FILE NAME =	USER NAME = rosadovazquezzy	DESIGNED -	REVISED -
ca:\pwwork\pwwork\rosadovazquezzy\d0336778\0121713-sh1-TS.dgn		DRAWN -	REVISED -
Default	PLOT SCALE = 40.0000' / in.	CHECKED -	REVISED -
	PLOT DATE = 3/28/2013	DATE -	REVISED -

**STATE OF ILLINOIS
DEPARTMENT OF TRANSPORTATION**

**IL ROUTE 7 (THEODORE ST.) AT ARBOR LANE
SCHEDULE OF QUANTITIES, CABLE PLAN, PHASE DESIGNATION DIAGRAM
AND EMERGENCY VEHICLE PREEMPTION SEQUENCE**

SCALE: NTS SHEET OF SHEETS STA. TO STA.

F.A. RTÉ.	SECTION	COUNTY	TOTAL SHEETS	SHEET NO.
VAR	2013-004-1	WILL	58	21
			CONTRACT NO. 60W22	
ILLINOIS FED. AID PROJECT				

CRESTHILL TS#7535