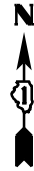
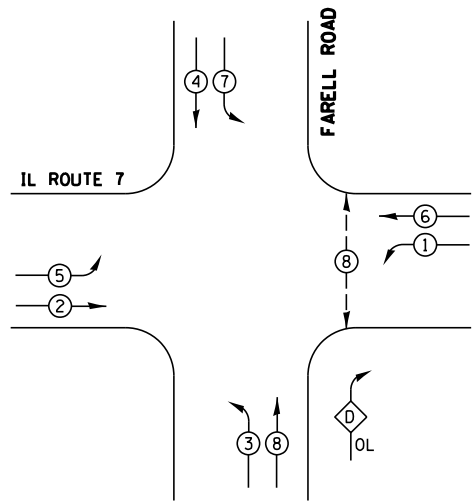


EXISTING CONTROLLER SEQUENCE



LEGEND

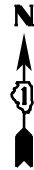
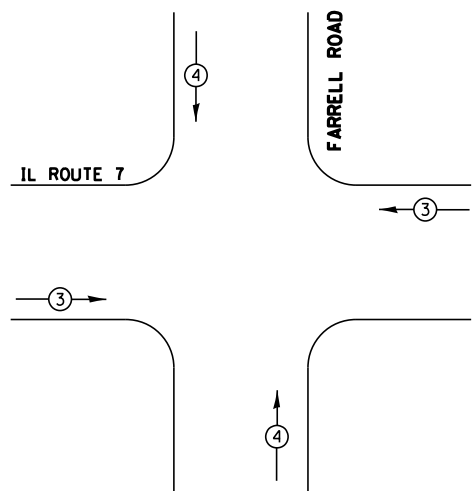
- ⊕ DUAL ENTRY PHASE
- ⊙ SINGLE ENTRY PHASE
- ⊖ OVERLAP
- ⊙ OL PEDESTRAIN PHASE
- * NUMBER REFERS TO ASSOCIATED PHASE

RIGHT TURN OVERLAP PHASE DESIGNATION

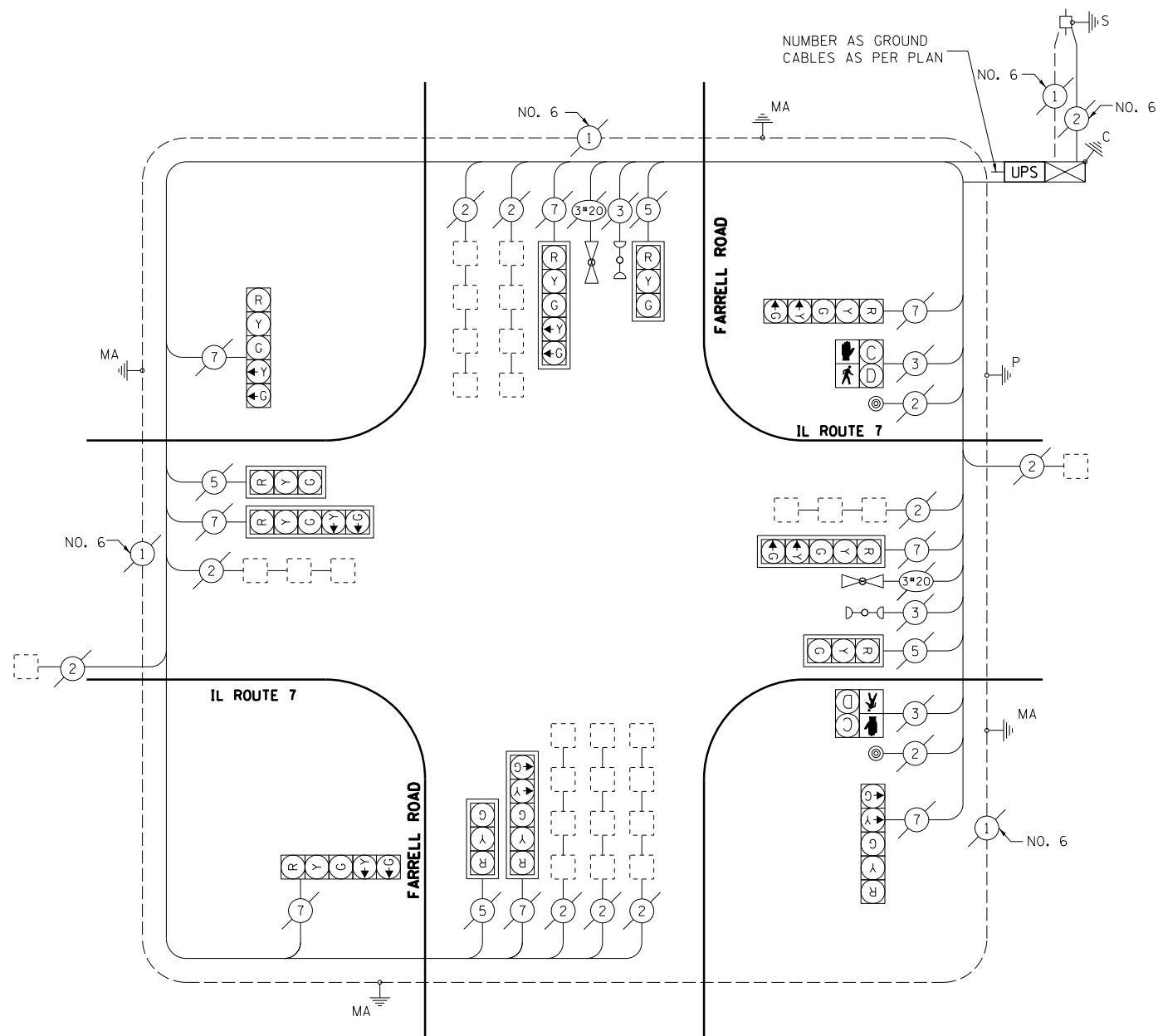
OVERLAP LETTER	PERMISSIVE PHASE	PROTECTED PHASE
D	= 8	+ 1

PHASE DESIGNATION DIAGRAM

EXISTING EMERGENCY VEHICLE PREEMPTION SEQUENCE



EXISTING EMERGENCY VEHICLE PREEMPTORS		
EMERGENCY VEHICLE PREEMPTOR	3	4
MOVEMENT	← →	↑ ↓



CABLE PLAN

SCHEDULE OF QUANTITIES

QTY	UNIT	ITEM
1	EACH	MAINTENANCE OF EXISTING TRAFFIC SIGNAL INSTALLATION
1	EACH	MODIFY EXISTING CONTROLLER CABINET
1	EACH	UNINTERRUPTABLE POWER SUPPLY, SPECIAL

I.D.O.T. TRAFFIC SIGNAL INSTALLATION ELECTRICAL SERVICE REQUIREMENTS				TOTAL WATTAGE
TYPE	NO. OF LAMPS	WATTAGE (INCAND. LED)	% OPERATION	
SIGNAL (RED)	12	17	0.50	102.0
(YELLOW)	12	25	0.25	75.0
(GREEN)	12	15	0.25	45.0
ARROW	16	12	0.10	19.2
PED. SIGNAL	2	25	1.00	50.0
CONTROLLER	1	100	1.00	100.0
ILLUM. SIGN		25	0.05	
VIDEO SYSTEM		150	1.00	
FLASHER			0.50	
ENERGY COSTS TO:				TOTAL = 391.2

ILLINOIS DEPARTMENT OF TRANSPORTATION
 DIVISION OF HIGHWAY/DISTRICT 1
 201 WEST CENTER COURT/SCHAUMBURG, ILLINOIS 60196-1096
 ENERGY SUPPLY: CONTACT: _____
 PHONE: _____
 COMPANY: _____

LOCKPORT TS#7526