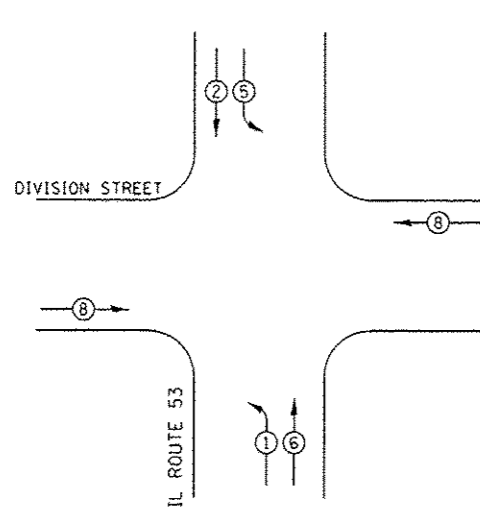


**EXISTING CONTROLLER SEQUENCE**

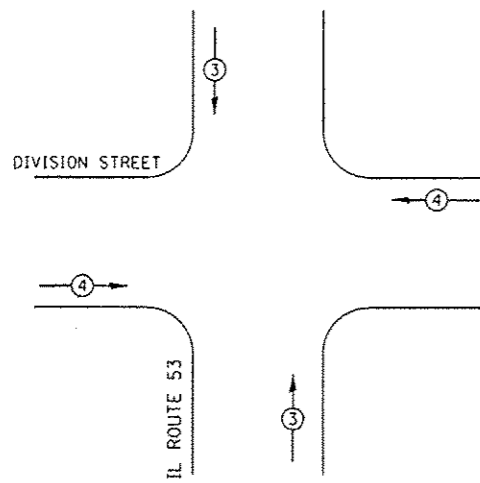


**LEGEND**

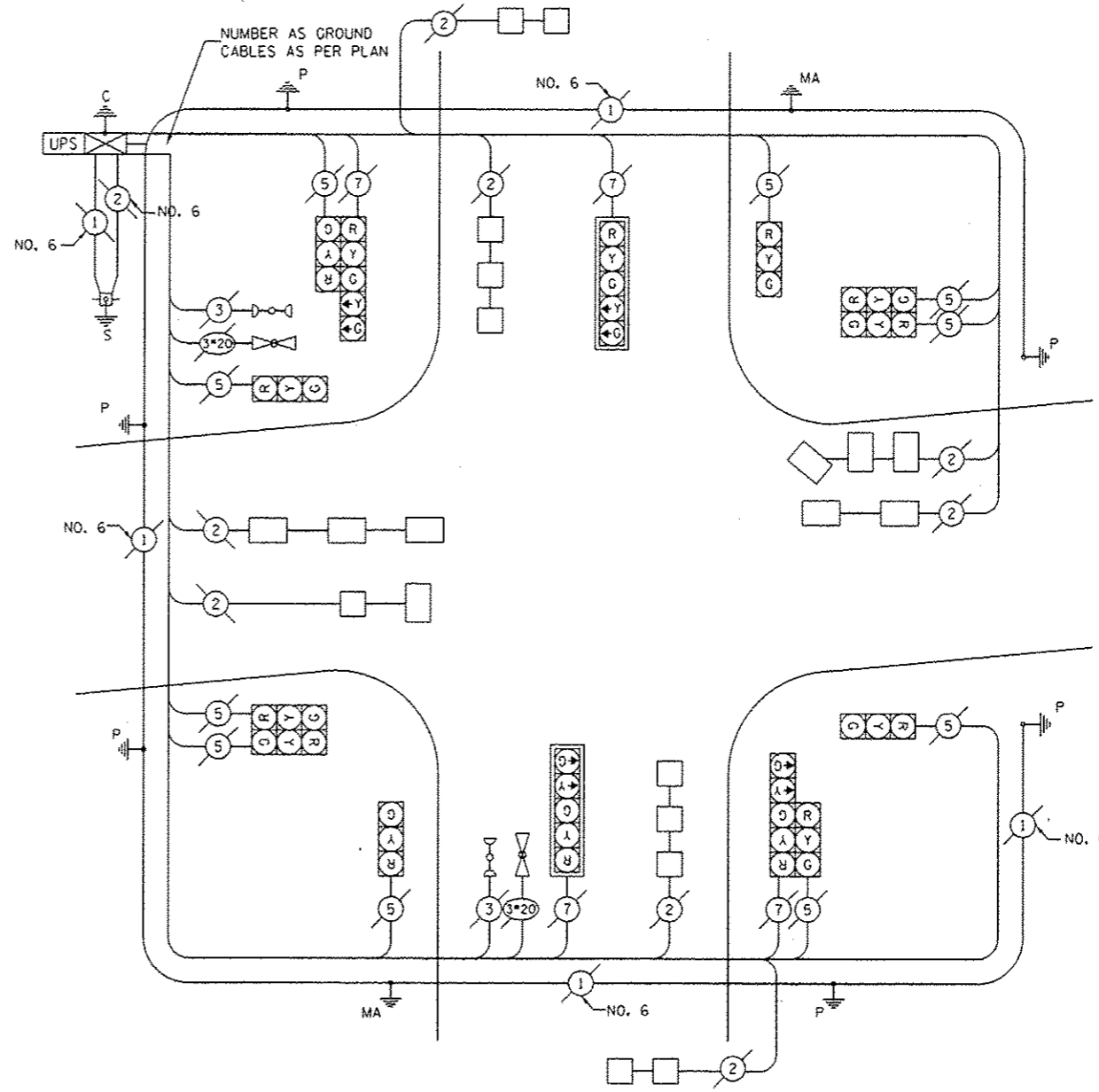
- DUAL ENTRY PHASE
- SINGLE ENTRY PHASE
- OVERLAP
- PEDESTRIAN PHASE
- NUMBER REFERS TO ASSOCIATED PHASE

**PHASE DESIGNATION DIAGRAM**

**EXISTING EMERGENCY VEHICLE PREEMPTION SEQUENCE**



EXISTING EMERGENCY VEHICLE PREEMPTORS		
EMERGENCY VEHICLE PREEMPTOR	3	4
MOVEMENT	↑↓	←→



**CABLE PLAN**

I.D.O.T. TRAFFIC SIGNAL INSTALLATION ELECTRICAL SERVICE REQUIREMENTS					TOTAL WATTAGE
TYPE	NO. OF LAMPS	WATTAGE x INCAND.	LED	% OPERATION	
SIGNAL (RED)	14		17	0.50	119.0
(YELLOW)	14		25	0.25	87.5
(GREEN)	14		15	0.25	52.5
ARROW	8		12	0.10	9.6
PED. SIGNAL			25	1.00	
CONTROLLER	1		100	1.00	100.0
ILLUM. SIGN			25	0.05	
VIDEO SYSTEM			150	1.00	
FLASHER				0.50	
ENERGY COSTS TO:					TOTAL = 368.6

ILLINOIS DEPARTMENT OF TRANSPORTATION  
DIVISION OF HIGHWAY/DISTRICT 1  
201 WEST CENTER COURT/SCHAUMBURG, ILLINOIS 60196-1096  
ENERGY SUPPLY: CONTACT: \_\_\_\_\_  
PHONE: \_\_\_\_\_  
COMPANY: \_\_\_\_\_

**SCHEDULE OF QUANTITIES**

QTY	UNIT	ITEM
1	EACH	MAINTENANCE OF EXISTING TRAFFIC SIGNAL INSTALLATION
1	EACH	MODIFY EXISTING CONTROLLER CABINET
1	EACH	UNINTERRUPTABLE POWER SUPPLY, SPECIAL

CREST HILL TS# 7545

FILE NAME: c:\pwork\p1dot\rosadovazquez\033678\DI21713-shs-TS.dgn	USER NAME: rosadovazquez	DESIGNED: IRV	REVISED: IRV 5-15-13	STATE OF ILLINOIS DEPARTMENT OF TRANSPORTATION		IL ROUTE 53 AT DIVISION STREET SCHEDULE OF QUANTITIES, CABLE PLAN, PHASE DESIGNATION DIAGRAM AND EMERGENCY VEHICLE PREEMPTION SEQUENCE		F.A. RTE.	SECTION	COUNTY	TOTAL SHEETS	SHEET NO.
Default	PLOT SCALE: 48,800% 1" = 100'	CHECKED: SM	DATE: 5/14/2013			SCALE: NTS	SHEET OF SHEETS	VAR	2013-004-1	WILL	58	33
										CONTRACT NO. 60W22		
										ILLINOIS FED. AID PROJECT		