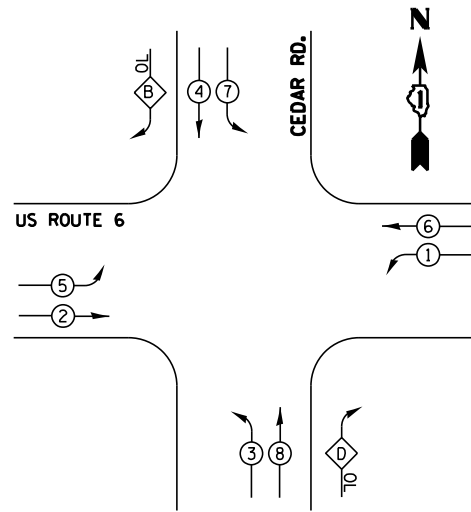


EXISTING CONTROLLER SEQUENCE



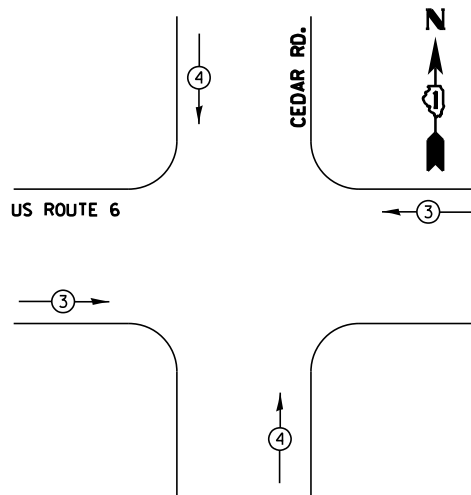
- LEGEND**
- ⊕ DUAL ENTRY PHASE
 - ⊙ SINGLE ENTRY PHASE
 - ⊕ OL OVERLAP
 - ⊙ PEDESTRIAN PHASE
 - * NUMBER REFERS TO ASSOCIATED PHASE

RIGHT TURN OVERLAP PHASE DESIGNATION

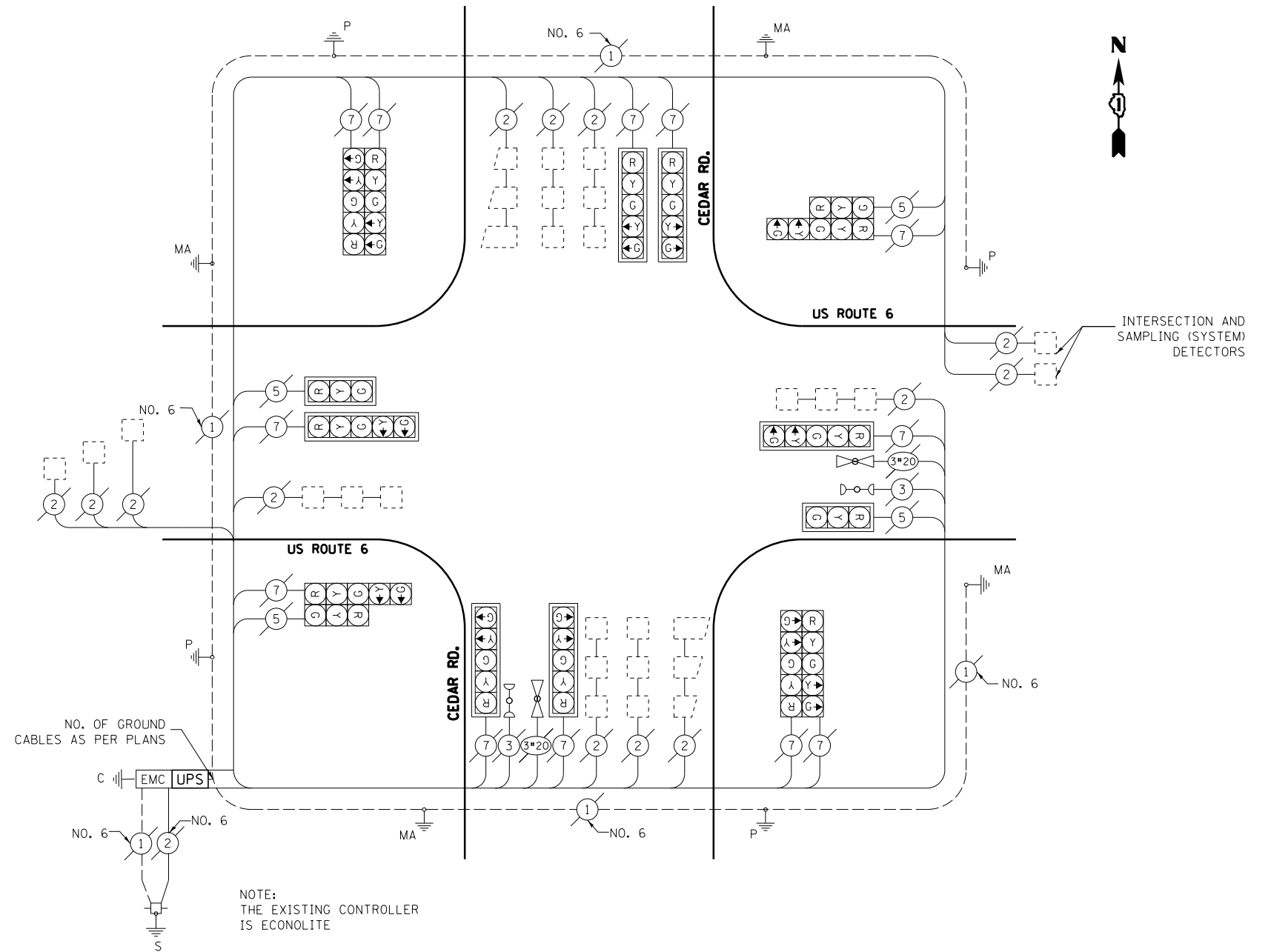
OVERLAP LETTER	PERMISSIVE PHASE	PROTECTED PHASE
B	= 4 +	5
D	= 8 +	1

PHASE DESIGNATION DIAGRAM

EXISTING EMERGENCY VEHICLE PREEMPTION SEQUENCE



EXISTING EMERGENCY VEHICLE PREEMPTORS		
EMERGENCY VEHICLE PREEMPTOR	3	4
MOVEMENT	←→	↑↓



CABLE PLAN

SCHEDULE OF QUANTITIES

QTY	UNIT	ITEM
1	EACH	MAINTENANCE OF EXISTING TRAFFIC SIGNAL INSTALLATION
1	EACH	MODIFY EXISTING CONTROLLER CABINET
1	EACH	UNINTERRUPTABLE POWER SUPPLY, SPECIAL

I.D.O.T. TRAFFIC SIGNAL INSTALLATION ELECTRICAL SERVICE REQUIREMENTS				TOTAL WATTAGE
TYPE	NO. OF LAMPS	WATTAGE (INCAND. LED)	% OPERATION	
SIGNAL (RED)	16	17	0.50	136.0
(YELLOW)	16	25	0.25	100.0
(GREEN)	16	15	0.25	60.0
ARROW	24	12	0.10	28.8
PED. SIGNAL	-	25	1.00	
CONTROLLER	1	100	1.00	100.0
ILLUM. SIGN	-	25	0.05	
VIDEO SYSTEM	-	150	1.00	
FLASHER	-		0.50	
ENERGY COSTS TO:				TOTAL = 424.8

ILLINOIS DEPARTMENT OF TRANSPORTATION
 DIVISION OF HIGHWAY/DISTRICT 1
 201 WEST CENTER COURT/SCHAUMBURG, ILLINOIS 60196-1096
 ENERGY SUPPLY: CONTACT: MARK ANDERSON
 PHONE: 815-724-5988
 COMPANY: COM ED