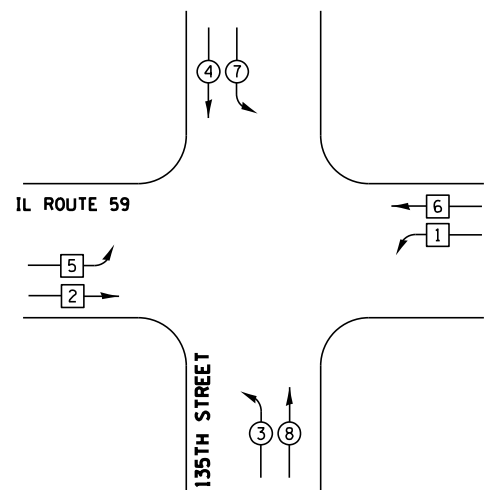


EXISTING CONTROLLER SEQUENCE

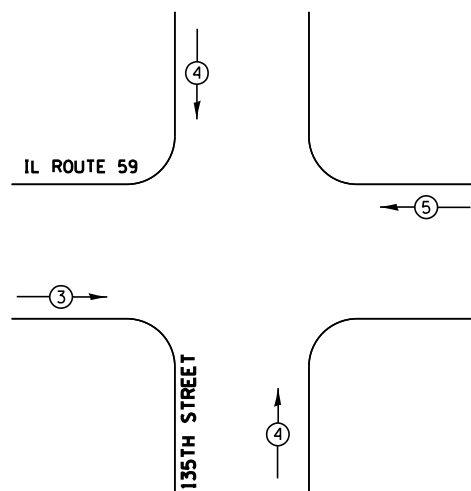


LEGEND

- DUAL ENTRY PHASE
- SINGLE ENTRY PHASE
- OVERLAP
- PEDESTRIAN PHASE
- NUMBER REFERS TO ASSOCIATED PHASE

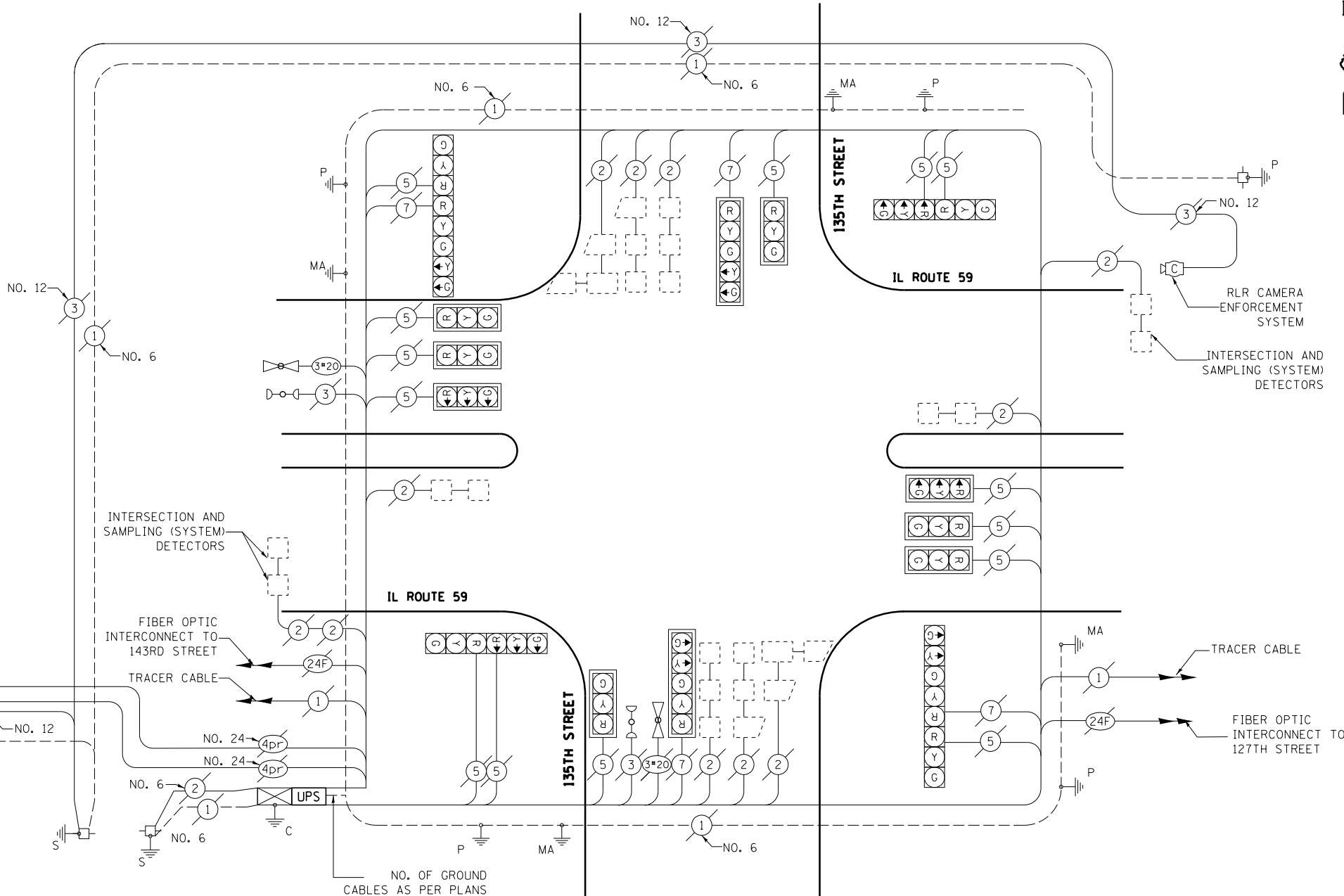
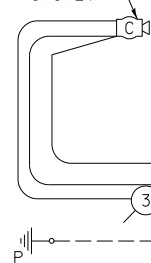
PHASE DESIGNATION DIAGRAM

EXISTING EMERGENCY VEHICLE PREEMPTION SEQUENCE



EXISTING EMERGENCY VEHICLE PREEMPTORS			
EMERGENCY VEHICLE PREEMPTOR	3	4	5
MOVEMENT	→ →	↑ ↓	← ←

RLR CAMERA ENFORCEMENT SYSTEM



CABLE PLAN

SCHEDULE OF QUANTITIES

QTY	UNIT	ITEM
1	EACH	MAINTENANCE OF EXISTING TRAFFIC SIGNAL INSTALLATION
1	EACH	MODIFY EXISTING CONTROLLER CABINET
1	EACH	UNINTERRUPTABLE POWER SUPPLY, SPECIAL

I.D.O.T. TRAFFIC SIGNAL INSTALLATION ELECTRICAL SERVICE REQUIREMENTS				TOTAL WATTAGE
TYPE	NO. OF LAMPS	WATTAGE (INCAND. / LED)	% OPERATION	
SIGNAL (RED)	18	17	0.50	153.0
(YELLOW)	18	25	0.25	112.5
(GREEN)	18	15	0.25	67.5
ARROW	8	12	0.10	9.6
PED. SIGNAL		25	1.00	
CONTROLLER	1	100	1.00	100
ILLUM. SIGN		25	0.05	
VIDEO SYSTEM		150	1.00	
FLASHER			0.50	
ENERGY COSTS TO:				TOTAL = 442.6

ILLINOIS DEPARTMENT OF TRANSPORTATION
 DIVISION OF HIGHWAY/DISTRICT 1
 201 WEST CENTER COURT/SCHAUMBURG, ILLINOIS 60196-1096
 ENERGY SUPPLY: CONTACT: GLENN HOUSEHOLDER
 PHONE: 815-724-5056
 COMPANY: COMMONWEALTH EDISON

FILE NAME =	USER NAME = rosadovazquezzy	DESIGNED -	REVISED -
ca:\pwork\pwork\rosadovazquezzy\d0336778\0121713-sh1-TS.dgn		DRAWN -	REVISED -
Default	PLOT SCALE = 40.0000' / in.	CHECKED -	REVISED -
	PLOT DATE = 3/28/2013	DATE -	REVISED -

STATE OF ILLINOIS DEPARTMENT OF TRANSPORTATION

IL ROUTE 59 AT 135TH STREET SCHEDULE OF QUANTITIES, CABLE PLAN, PHASE DESIGNATION DIAGRAM

SCALE: NTS SHEET OF SHEETS STA. TO STA.

F.A. RTE.	SECTION	COUNTY	TOTAL SHEETS	SHEET NO.
VAR	2013-004-1	WILL	58	45
CONTRACT NO. 60W22			ILLINOIS FED. AID PROJECT	

PLAINFIELD TS#21864