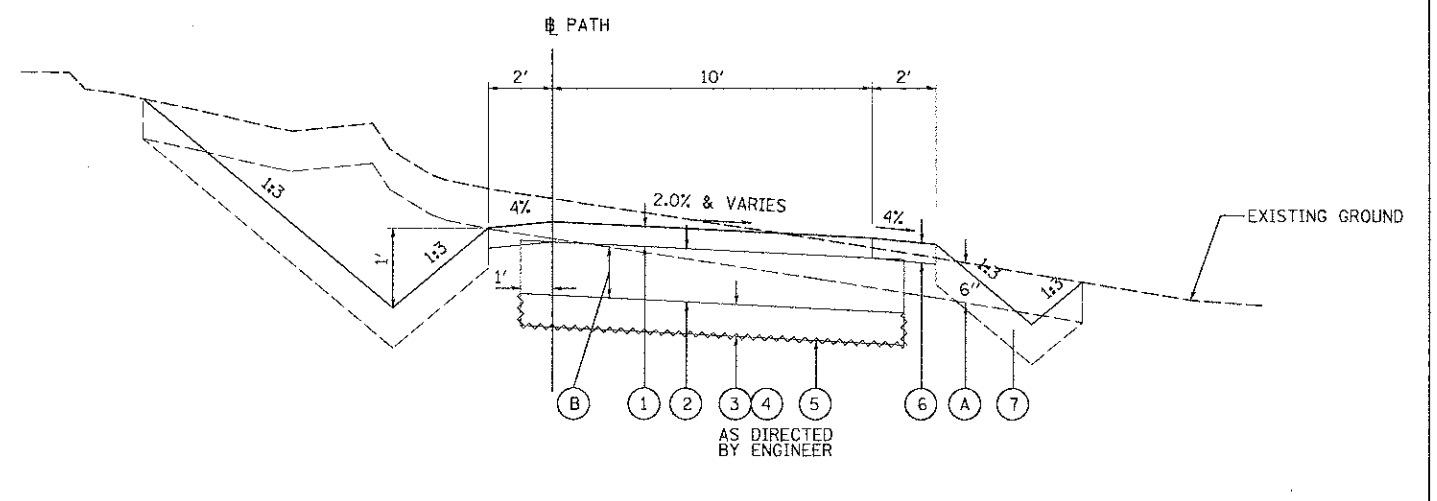
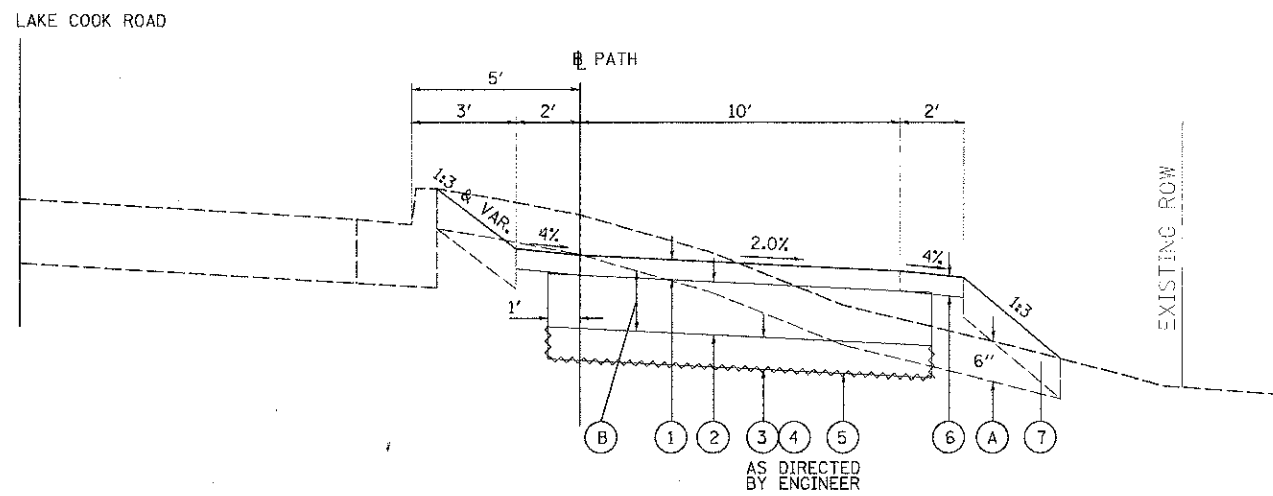


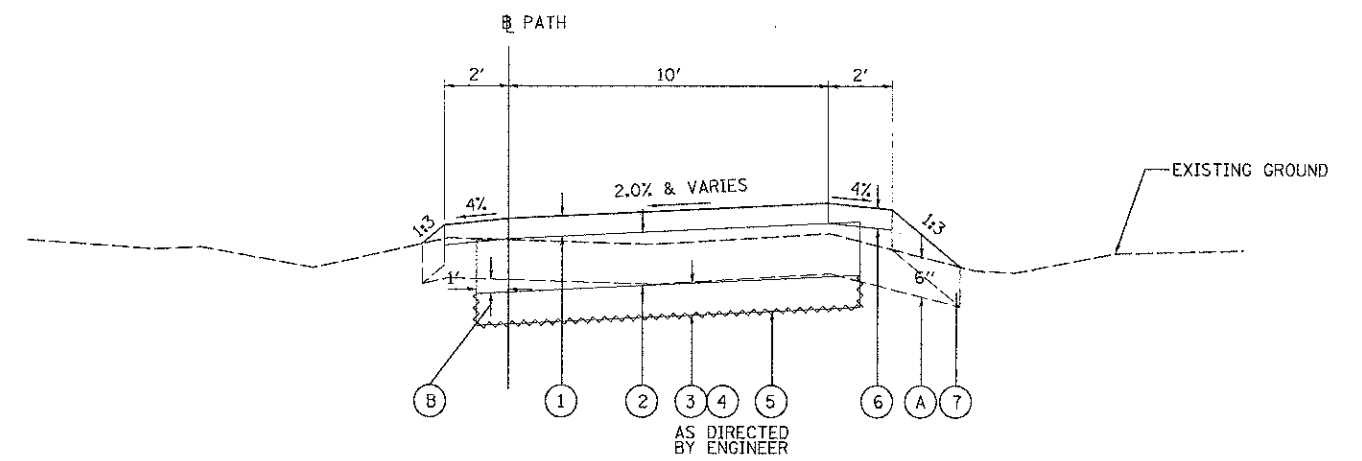
PROPOSED TYPICAL SECTION  
STA. 9+54.72 TO STA. 18+36



PROPOSED TYPICAL SECTION  
STA. 38+70 TO STA. 43+11



PROPOSED TYPICAL SECTION  
STA. 21+75 TO STA. 25+52  
STA. 30+86 TO STA. 31+35



PROPOSED TYPICAL SECTION  
STA. 18+36 TO STA. 21+75  
STA. 25+52 TO STA. 30+86  
STA. 31+35 TO STA. 38+70  
STA. 44+32 TO STA. 58+67

**PROPOSED CONDITIONS**

- ① 3" HOT-MIX ASPHALT SURFACE COURSE, MIX "D", N50
- ② AGGREGATE BASE COURSE, TYPE B, 8" [1]
- ③ REMOVAL AND DISPOSAL OF UNSUITABLE MATERIAL (UNDERCUTS)
- ④ AGGREGATE SUBGRADE IMPROVEMENT [1]
- ⑤ GEOTECHNICAL FABRIC FOR GROUND STABILIZATION
- ⑥ AGGREGATE SHOULDERS, TYPE B, 3" [1]
- ⑦ TOPSOIL EXCAVATION AND PLACEMENT - 6"
- Ⓐ TOPSOIL EXCAVATION AND PLACEMENT
- Ⓑ EARTH EXCAVATION

[1] TO PREVENT CHANGES IN SOIL PH, THE USE OF LIMESTONE BASED AGGREGATES WILL NOT BE ALLOWED IN THESE PAY ITEMS. SEE "COARSE AGGREGATES" SPECIAL PROVISION FOR MORE INFORMATION.

HOT-MIX ASPHALT MIXTURE REQUIREMENTS	
MIXTURE TYPE	AIR VOIDS @NDES
HOT-MIX ASPHALT SURFACE COURSE, MIX "D", N50 (IL 9.5 mm), 3" (2 LIFTS)	4% @ 50 GYR.

THE UNIT WEIGHT USED TO CALCULATE ALL HOT-MIX ASPHALT SURFACE MIXTURES IS 112 LBS/SQYD/IN.

THE "AC TYPE" FOR NON-POLYMERIZED HMA MIXES SHALL BE "PG 64-22" UNLESS MODIFIED BY DISTRICT ONE SPECIAL PROVISIONS FOR "PERCENT OF RAP". SEE SPECIAL PROVISIONS.