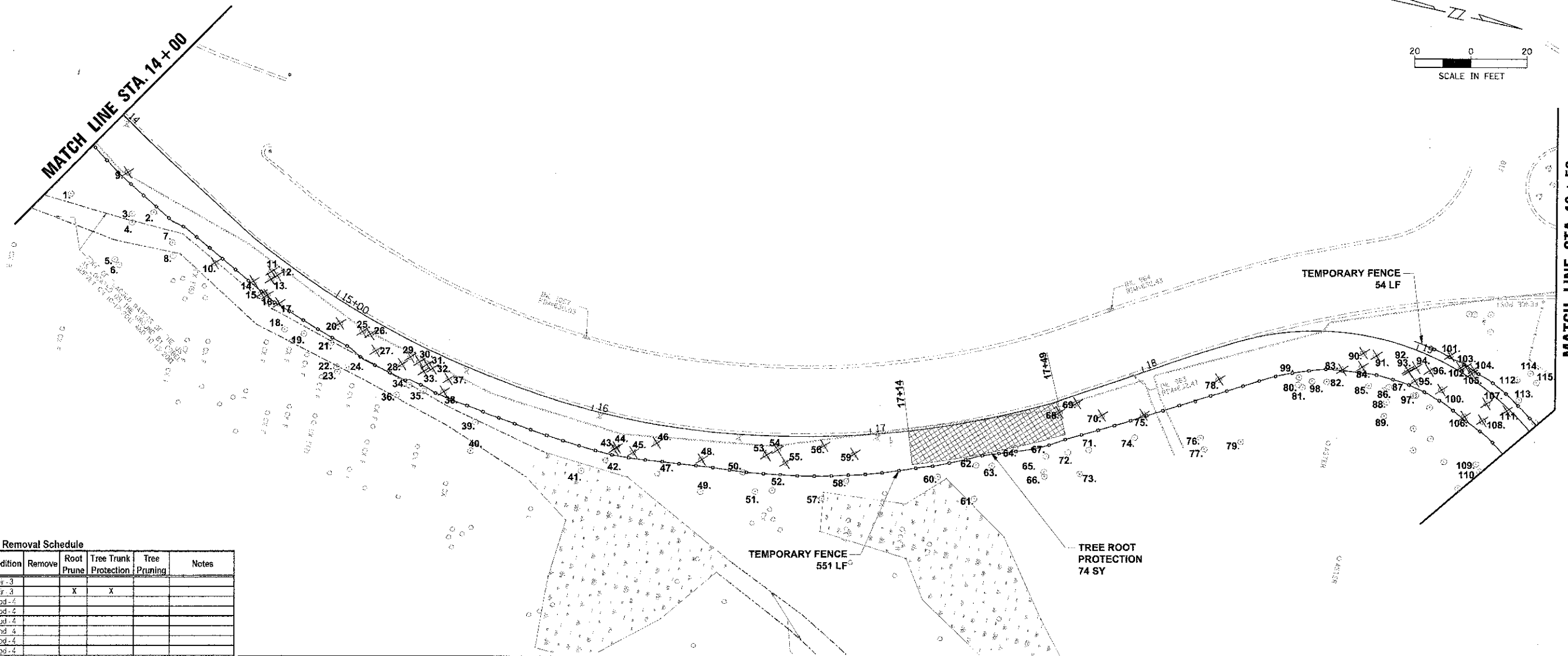


MATCH LINE STA. 14+00

MATCH LINE STA. 19+50



STA. 14+00 - 19+50 Tree Preservation & Removal Schedule

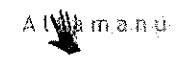
Tree Code	Size	Species	Condition	Remove	Root Prune	Tree Trunk Protection	Tree Pruning	Notes
1	22" cal	Ash	Fair-3					
2	14" cal	Ash	Fair-3		X	X		
3	6" cal	Ash	Good-4					
4	20" cal	Cottonwood	Good-4					
5	5" cal	Walnut	Good-4					
6	5" cal	Hawthorn	Good-4					
7	5" cal	Cottonwood	Good-4					
8	5" cal	Walnut	Good-4					
9	3" cal	Ash	Fair-3	X				
10	14" cal	Cottonwood	Good-5		X			
11	2" cal	Cherry	Fair-3	X				
12	1" cal	Bottlebrush Buck	Good-4	X				
13	3" cal	Ash	Good-4	X				
14	13" cal	Cottonwood	Good-4	X				
15	11" cal	Cottonwood	Good-4	X				
16	6" cal	Cottonwood	Good-4	X				
17	5" cal	Ash	Good-4	X				
18	7" cal	Cottonwood	Good-5		X	X		
19	3" cal	Cottonwood	Poor-2		X	X		
20	3" cal	Ash	Good-5	X				
21	14" cal	Cottonwood	Good-4		X	X		
22	5" cal	Cottonwood	Good-4					
23	4" cal	Ash	Good-4					
24	5" cal	Cottonwood	Good-4					
25	4" cal	Ash	Good-4	X				
26	2" cal	Ash	Good-5	X				
27	4" cal	Linden	Good-4	X				
28	3" cal	Ash	Good-4	X				
29	1" cal	Hickory	Good-2	X				
30	3" cal	Ash	Poor-1	X				
31	1" cal	Ash	Good-4	X				
32	3" cal	Persimmon	Good-5	X				
33	7" cal	Ash	Good-4	X				
34	12" cal	Cottonwood	Good-4		X	X		
35	14" cal	Cottonwood	Good-4		X	X		
36	7" cal	Ash	Good-4					
37	3" cal	Persimmon	Good-4	X				
38	4" cal	Persimmon	Good-4	X				
39	9" cal	Ash	Fair-3		X			
40	8" cal	Ash	Good-4					
41	23" cal	Cottonwood	Good-5		X	X		
42	MS 3x3" cal	Hemlock	Good-5		X			
43	6" cal	Hemlock	Good-5	X				
44	6" cal	Hemlock	Good-5	X				
45	MS 1x0" 1x4" cal	Hemlock	Good-5	X				
46	8" cal	Redbud	Good-5	X				
47	8" cal	Hemlock	Good-5				X	
48	14" cal	Cottonwood	Good-4	X				
49	6" cal	Ash	Fair-3					

Tree Code	Size	Species	Condition	Remove	Root Prune	Tree Trunk Protection	Tree Pruning	Notes
50	6" cal	Walnut	Good-4		X	X		
51	4" cal	Honeschessnut	Good-4					
52	6" cal	Cherry	Fair-3					
53	4" cal	Cherry	Good-4	X				
54	3" cal	Gray Dogwood	Fair-3	X				
55	MS 2x2" 2x3" cal	Hemlock	Fair-3	X				
56	MS 2x2" 2x3" cal	Hemlock	Good-4	X				
57	5" cal	Hickory	Good-4					
58	6" cal	Ash	Good-4		X	X		
59	6" cal	Hemlock	Good-4	X	X			
60	28" cal	Oak	Good-5			X	X	
61	23" cal	Oak	Good-5			X	X	
62	25" cal	Oak	Good-5			X		
63	MS 2x6" cal	Cherry	Good-4					
64	7" cal	Hemlock	Good-5			X	X	
65	18" cal	Hemlock	Good-4			X	X	
66	4" cal	Ash	Dead					
67	23" cal	Ash	Good-5			X		
68	3" cal	Cherry	Fair-3	X				
69	3" cal	Cherry	Fair-3	X				
70	7" cal	Hemlock	Good-4	X				
71	MS 3x3" 1x5" cal	Hemlock	Fair-3		X		X	
72	11" cal	Ash	Good-4		X	X		
73	20" cal	Ash	Fair-3					
74	14" cal	Oak	Good-4			X		
75	8" cal	Hawthorn	Fair-3	X				
76	6" cal	Hawthorn	Fair-3					
77	6" cal	Ash	Dead					
78	MS 2x7" cal	Ash	Fair-3	X				
79	8" cal	Ash	Dead					
80	13" cal	Ash	Good-4			X		
81	3" cal	Elm	Good-1					
82	7" cal	Ash	Good-4					
83	7" cal	Hawthorn	Fair-3					
84	16" cal	Ash	Poor-2	X				
85	8" cal	Oak	Good-4		X	X		
86	3" cal	Hickory	Good-4					
87	6" cal	Hickory	Good-4		X	X		

Tree Code	Size	Species	Condition	Remove	Root Prune	Tree Trunk Protection	Tree Pruning	Notes
88	10" cal	Oak	Good-4					
89	6" cal	Oak	Good-4					
90	6" cal	Ash	Good-4	X				
91	6" cal	Hawthorn	Good-4	X				
92	4" cal	Hickory	Good-4	X				
93	6" cal	Oak	Good-4	X				
94	6" cal	Oak	Good-4	X				
95	3" cal	Hickory	Good-4	X				
96	6" cal	Oak	Good-4	X				
97	3" cal	Oak	Good-4	X				
98	MS 2x4" 1x2" cal	Hawthorn	Fair-3					
99	4" cal	Ash	Fair-3					
100	6" cal	Oak	Good-4	X				
101	7" cal	Oak	Good-4	X				
102	3" cal	Cherry	Good-4	X				
103	3" cal	Cherry	Good-4	X				
104	4" cal	Ash	Good-4	X				
105	4" cal	Elm	Good-4	X				
106	4" cal	Elm	Good-4	X				
107	3" cal	Ash	Good-4	X				
108	4" cal	Ash	Good-4	X				
109	3" cal	Ash	Good-4	X				
110	MS 2x15" cal	Oak	Good-4					
111	3" cal	Ash	Good-4	X				
112	MS 2x5" cal	Hawthorn	Good-4					
113	12" cal	Oak	Good-4		X	X		
114	11" cal	Ash	Good-4					
115	3" cal	Oak	Good-4					

- LEGEND:
- TREE TO BE REMOVED ✕
  - TREE TO REMAIN ○
  - ENGINEERED BARRIER (TREE ROOT PROTECTION) [Cross-hatched box]
  - TEMPORARY FENCE [Dashed line]

9575 W. Higgins Road, Suite 600  
Rosemont, Illinois 60018  
(847) 823-0600



USER NAME: mchomick	DESIGNED: MWJ	REVISED:
PL01 SCALE = 20'	DRAWN: PJH	REVISED:
PL01 DATE = 4/11/2013	CHECKED: MWJ	REVISED:
	DATE: 4/11/13	REVISED:

STATE OF ILLINOIS  
DEPARTMENT OF TRANSPORTATION

LAKE COOK ROAD/NORTH BRANCH BICYCLE TRAIL EXTENSION  
VEGETATION PROTECTION AND REMOVAL PLANS

SCALE: 1" = 20' SHEET NO. OF SHEETS STA. TO STA.

F.A.U. RTE. 3726	SECTION 10-F3000-22-BT	COUNTY COOK/LAKE	TOTAL SHEETS 89	SHEET NO. 9
CONTRACT NO. 63781			ILLINOIS FED. AID PROJECT	

FILE NAME = PEN\_11049\_02.SHT