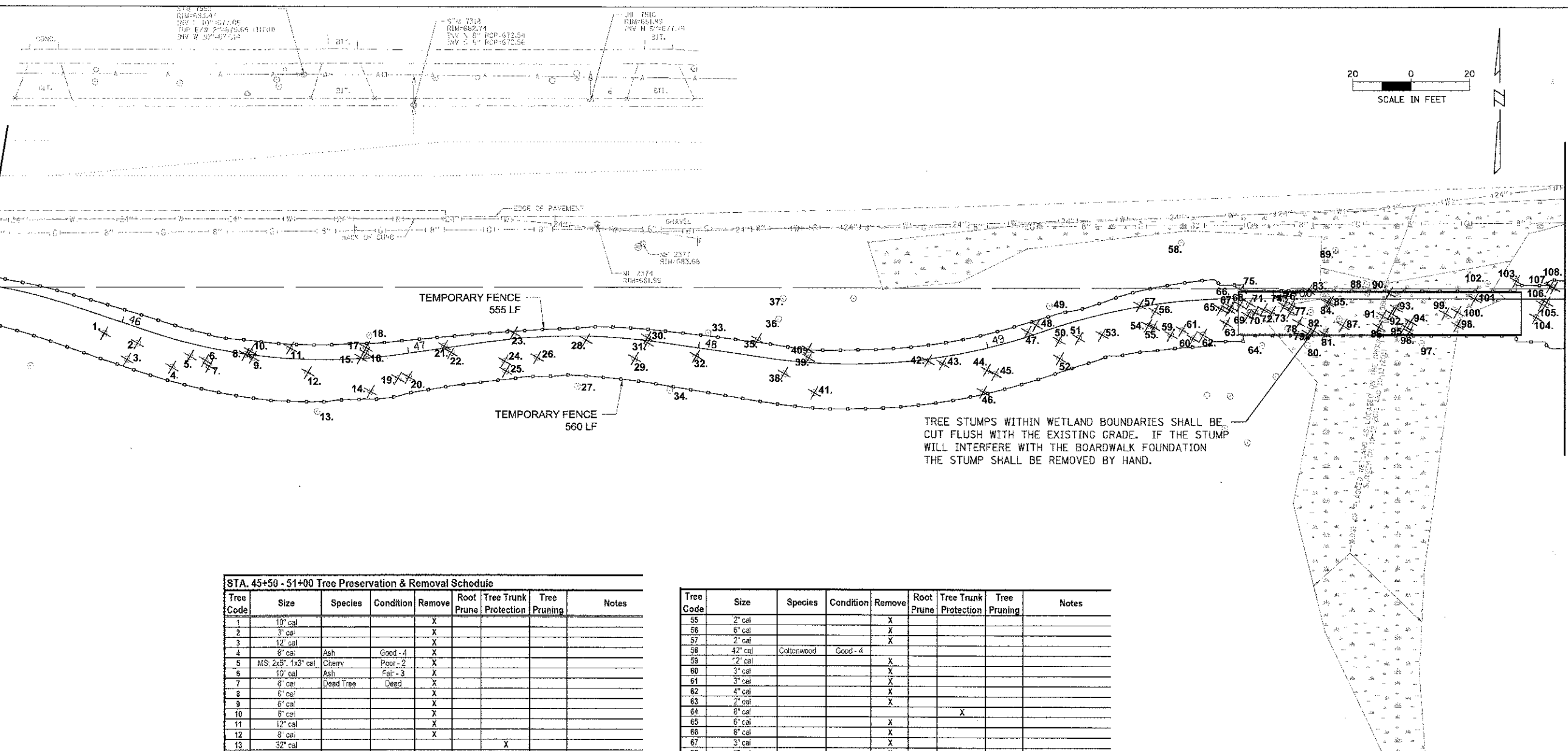


MATCH LINE STA. 45+50

MATCH LINE STA. 51+00



TREE STUMPS WITHIN WETLAND BOUNDARIES SHALL BE CUT FLUSH WITH THE EXISTING GRADE. IF THE STUMP WILL INTERFERE WITH THE BOARDWALK FOUNDATION THE STUMP SHALL BE REMOVED BY HAND.

STA. 45+50 - 51+00 Tree Preservation & Removal Schedule

Tree Code	Size	Species	Condition	Remove	Root Prune	Tree Trunk Protection	Tree Pruning	Notes
1	10" cal			X				
2	3" cal			X				
3	12" cal			X				
4	8" cal	Ash	Good - 4	X				
5	MS: 2x5", 1x3" cal	Cherry	Poor - 2	X				
6	10" cal	Ash	Fair - 3	X				
7	6" cal	Dead Tree	Dead	X				
8	6" cal			X				
9	6" cal			X				
10	6" cal			X				
11	12" cal			X				
12	8" cal			X				
13	32" cal					X		
14	10" cal			X				
15	8" cal	Ash	Fair - 3	X				
16	8" cal	Dead Tree	Dead	X				
17	4" cal	Elm	Fair - 3	X				
18	5" cal	Ash	Fair - 3			X		
19	12" cal	Dead Tree	Dead	X				
20	12" cal	Dead Tree	Dead	X				
21	12" cal	Catalpa	Good - 4	X				
22	5" cal			X				
23	15" cal	Elm	Poor - 1	X				
24	4" cal			X				
25	4" cal			X				
26	8" cal			X				
27	10" cal					X		
28	12" cal	Ash	Poor - 2	X				
29	12" cal			X				
30	10" cal			X				
31	10" cal	Ash	Good - 4	X				
32	12" cal			X				
33	10" cal			X				
34	6" cal				X	X		
35	8" cal	Ash	Fair - 3	X				
36	15" cal	Ash	Fair - 3			X		
37	9" cal	Oak	Good - 4					
38	10" cal	Dead Tree	Dead	X				
39	8" cal	Ash	Fair - 3	X				
40	12" cal	Ash	Good - 4	X				
41	12" cal			X				
42	3" cal			X				
43	8" cal			X				
44	10" cal			X				
45	10" cal			X				
46	10" cal			X				
47	10" cal			X				
48	3" cal			X				
49	12" cal					X		
50	6" cal			X				
51	6" cal			X				
52	6" cal			X				
53	24" cal			X				
54	12" cal			X				

Tree Code	Size	Species	Condition	Remove	Root Prune	Tree Trunk Protection	Tree Pruning	Notes
55	2" cal			X				
56	6" cal			X				
57	2" cal			X				
58	42" cal	Callowood	Good - 4					
59	12" cal			X				
60	3" cal			X				
61	3" cal			X				
62	4" cal			X				
63	2" cal			X				
64	8" cal					X		
65	8" cal			X				
66	8" cal			X				
67	3" cal			X				
68	3" cal			X				
69	4" cal			X				
70	10" cal			X				
71	4" cal			X				
72	8" cal			X				
73	12" cal			X				
74	8" cal			X				
75	3" cal			X				
76	6" cal			X				
77	2" cal			X				
78	3" cal	Dead Tree	Dead	X				
79	6" cal			X				
80	6" cal					X		
81	12" cal			X				
82	4" cal			X				
83	3" cal			X				
84	3" cal			X				
85	4" cal			X				
86	6" cal			X				
87	18" cal			X				
88	3" cal					X		
89	18" cal	Ash	Good - 4			X		
90	15" cal	Elm	Fair - 3			X		
91	8" cal			X				
92	9" cal			X				
93	6" cal			X				
94	4" cal			X				
95	48" cal			X				
96	12" cal			X				
97	6" cal					X		
98	15" cal			X				
99	15" cal			X				
100	3" cal			X				
101	6" cal			X				
102	12" cal					X		
103	15" cal			X				
104	15" cal			X				
105	6" cal			X				
106	6" cal			X				
107	2" cal			X				
108	9" cal			X				

LEGEND:
 TREE TO BE REMOVED ✕
 TREE TO REMAIN ○
 ENGINEERED BARRIER (TREE ROOT PROTECTION) ▨
 TEMPORARY FENCE - - - - -