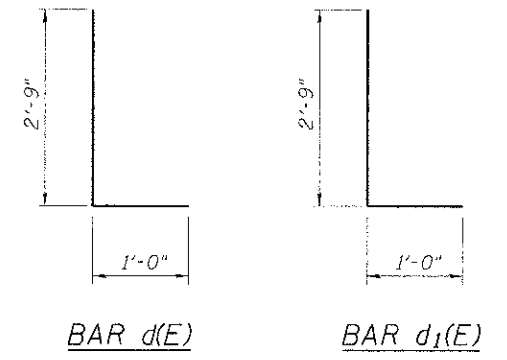
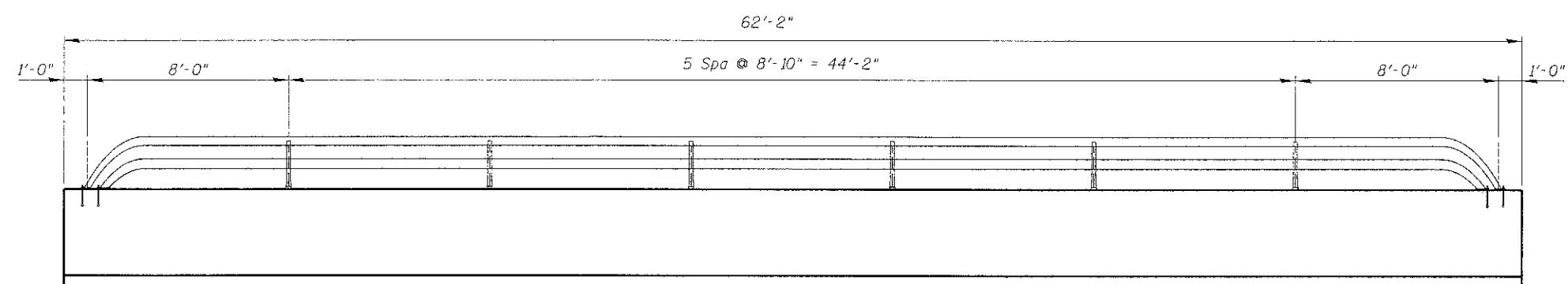


INSIDE ELEVATION OF PARAPET AND SIDEWALK
(Aluminum Railing Not Shown For Clarity)

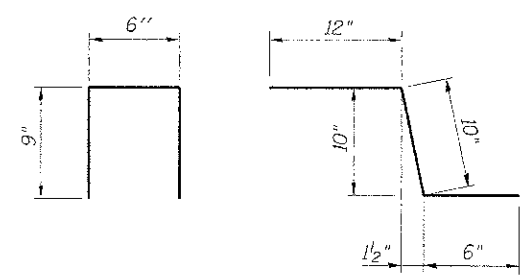
MINIMUM BAR LAP
#4 bar = 2'-0"
#8 bar = 5'-2"



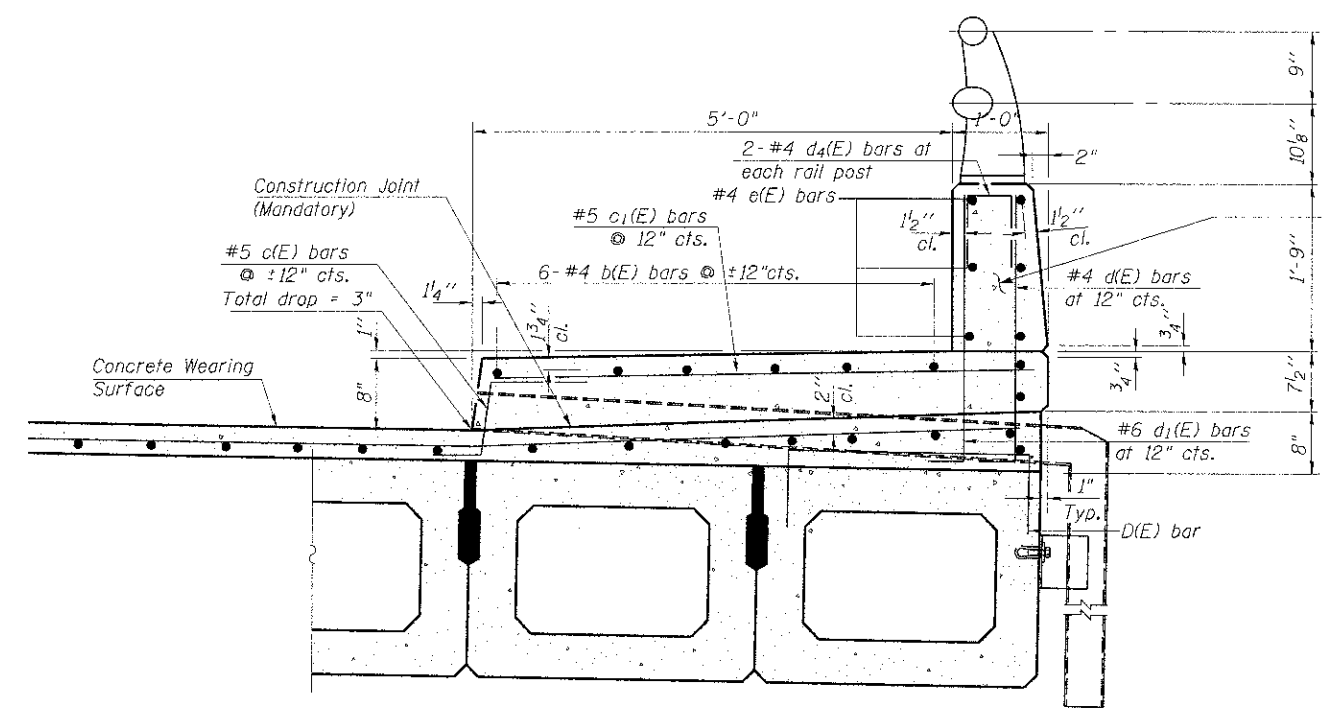
BAR d(E) **BAR d1(E)**



RAIL POST SPACING



BAR d4(E) **BAR c(E)**



SECTION THRU SIDEWALK

** Place #4 D(E) bars at 9" cts. in fascia beam. D(E) bar included in cost of beam.

1/2" Preformed Self-Expanding Cork Joint Filler according to Article 1051.07 of the Std. Spec. Cost included with Concrete Superstructure.

Note:
All drain tubes and accessories shall be galvanized according to AASHTO M111 or M232, (as applicable).
The cost of the drain tube assemblies and everything necessary for their installation is included with Concrete Superstructure.

SUPERSTRUCTURE BILL OF MATERIAL

Bar	No.	Size	Length	Shape
d(E)	63	#4	32'-8"	—
a1(E)	62	#4	6'-0"	—
b(E)	84	#4	32'-3"	—
c(E)	63	#5	2'-4"	L
c1(E)	63	#5	5'-8"	—
d(E)	63	#4	3'-9"	L
d1(E)	63	#6	3'-9"	L
d2(E)	68	#5	5'-11"	L
d3(E)	68	#5	5'-7"	L
d4(E)	16	#4	2'-0"	L
e(E)	52	#4	15'-3"	—
e1(E)	2	#4	32'-0"	—
e2(E)	2	#8	33'-8"	—
Reinforcement Bars, Epoxy Coated			Pound	6,060
Concrete Superstructure			Cu. Yd.	21
Concrete Wearing Surface, 5"			Sq. Yd.	228

Bars indicated thus 1 x 3-#4 etc. indicates 1 line of bars with 3 lengths per line.

FILE NAME = N:\ROLLINGMEADOWS\98361BR126\98361BR126-SS.SHT
 PLO: SCALE =
 PLO: DATE =

DESIGNED -
 CHECKED -
 DRAWN -
 CHECKED -

REVISD -
 REVISED -
 REVISED -
 REVISED -

**STATE OF ILLINOIS
 DEPARTMENT OF TRANSPORTATION**

**CARRIAGEWAY DRIVE
 SUPERSTRUCTURE DETAILS**

F.A. RTE. SECTION COUNTY TOTAL SHEETS SHEET NO.
 10-00101-00-BR COOK 34 22
 CONTRACT NO. 63787
 ILLINOIS FED. AID PROJECT