

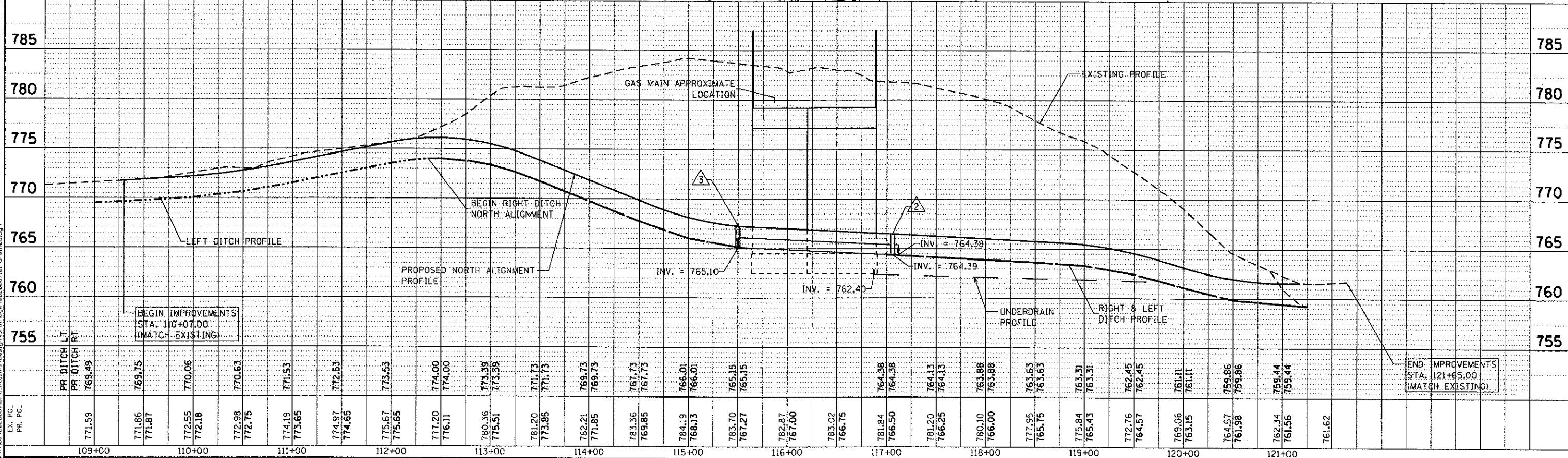
END IMPROVEMENTS
STA. 121+65.00
(MATCH EXISTING)

BEGIN IMPROVEMENTS
STA. 109+30.00
(MATCH EXISTING)

BEGIN IMPROVEMENTS
STA. 110+07.00
(MATCH EXISTING)

- 8 STA. 119+79 17 RT
CONCRETE HEADWALL FOR PIPE DRAINS
INV. = 761.67
- 12 STA 120+37 17 LT
PRECAST REINFORCED CONCRETE FLARED END SECTION 12"
INV. = 760.16
- 13 STA 120+15 17 LT
PRECAST REINFORCED CONCRETE FLARED END SECTION 12"
INV. = 760.68
- 9 PIPE CULVERT, CLASS A, TYPE 1 12"
23 LF @ 2.26%
TBF = 0.3 CU YD
- 15 PIPE UNDERDRAIN 6"
318 LF @ 0.25%

NOTE: SEE SHEET 38 FOR REMAINING PIPE AND STRUCTURE INFORMATION



PR DITCH LT PR DITCH RT 769.49	771.59	771.86 771.87	772.55 772.18	772.98 772.75	774.19 773.65	774.97 774.65	775.67 775.65	777.20 776.11	780.36 775.51	781.20 773.85	782.21 771.85	783.36 769.85	784.19 768.13	785.70 767.27	782.87 767.00	783.02 766.75	781.84 766.50	781.20 766.25	780.10 766.00	777.95 765.75	775.84 765.43	772.76 764.57	769.06 763.15	764.57 759.96	762.34 759.44	761.62	
109+00	110+00	111+00	112+00	113+00	114+00	115+00	116+00	117+00	118+00	119+00	120+00	121+00															

FILE NAME = N:\PROJECTS\2013\Rollins\Design\08220807.dwg - 01-df-01-03.dwg

Ciorba Group, Inc.
CONSULTING ENGINEERS
8507 North Cumberland Avenue, Suite 402
Chicago, Illinois 60658
Tel. 773.776.4009 Fax 773.776.4014

USER NAME = jk,jellman	DESIGNED -	REVISED -
PLOT SCALE = 100.0000' / 1"	DRAWN - JLP	REVISED -
PLOT DATE = 4/8/2013	CHECKED - TJP	REVISED -
	DATE = 4/8/2013	REVISED -

**MILLENNIUM TRAIL
LAKE COUNTY FOREST PRESERVES**

**DRAINAGE PLAN AND PROFILE - MILLENNIUM TRAIL
ROLLINS ROAD UNDERPASS**

SCALE: SHEET NO. OF SHEETS STA. TO STA.

F.A.U. RTE.	SECTION	COUNTY	TOTAL SHEETS	SHEET NO.
181	12-F3000-01-BT	LAKE	118	40
CONTRACT NO. 63807				
FED. ROAD DIST. NO. - ILLINOIS FED. AID PROJECT				