

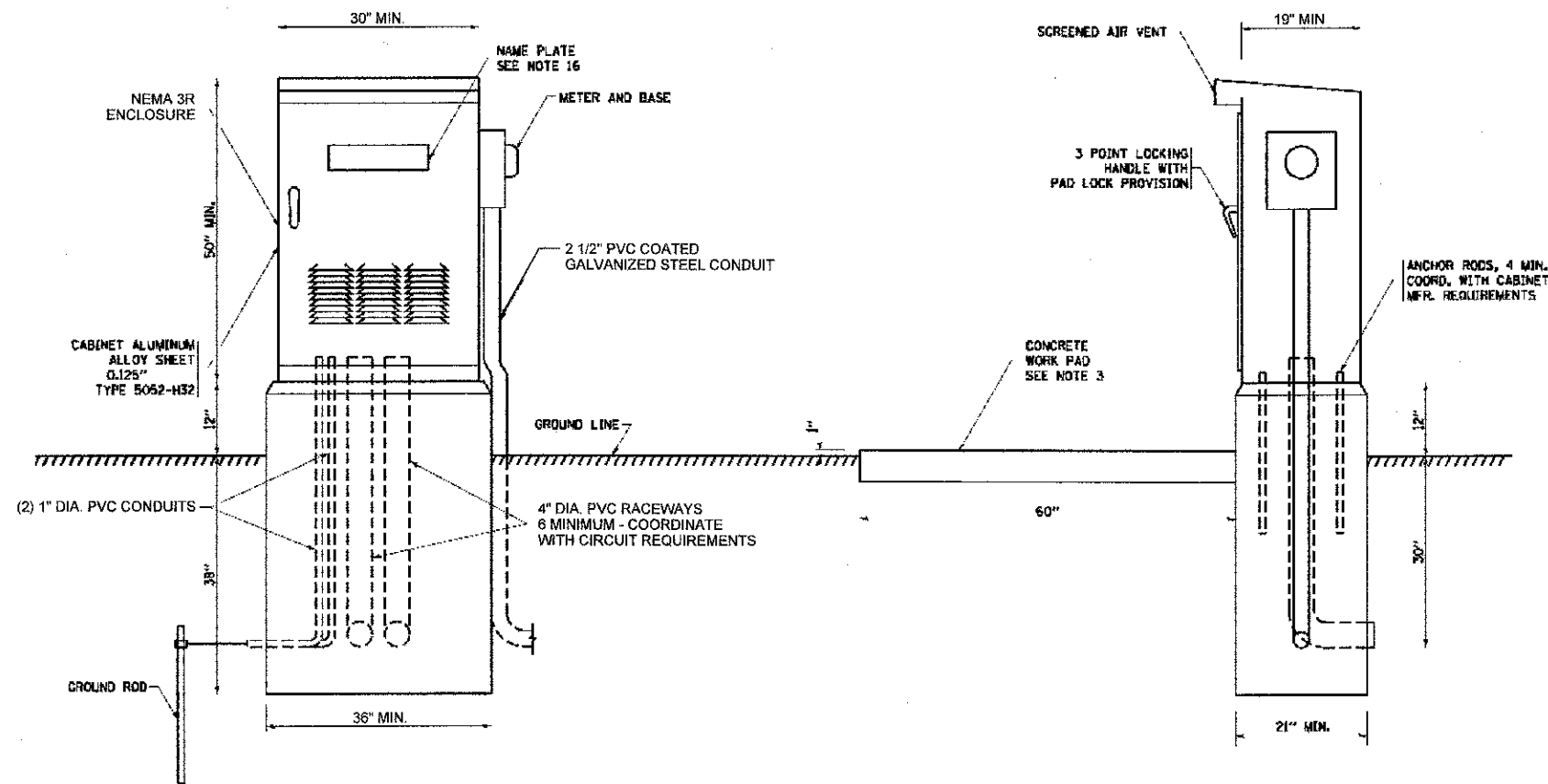
PANEL WIRING DIAGRAM

**PANEL EQUIPMENT
BILL OF MATERIAL**

ITEM	QUANTITY	DESCRIPTION
A	1	MAIN CIRCUIT BREAKER, 2 POLE, 600 VOLT 100 AMP. FRAME, 100 AMP, NON-INTERCHANGEABLE TRIP INTERRUPTING RATING NEMA-22000 AMP. AT 480 VOLT.
B	1	REMOTE CONTROL SWITCH, ELECTRICALLY OPERATED, MECHANICALLY HELD, 2 POLE, SINGLE THROW, 100 AMP., 600 VOLTS CONTROL CIRCUIT 240 VOLT.
C	6	CIRCUIT BREAKERS, 1 POLE, 100 AMP. FRAME, 30 AMP. NON-INTERCHANGEABLE TRIP INTERRUPTING RATING NEMA-10,000 AMP. AT 240 VOLTS.
D	2	CONTROL CIRCUIT -CIRCUIT BREAKER. 1 POLE, 240 VOLT, 100 AMP. FRAME, 15 AMP. NON-INTERCHANGEABLE TRIP INTERRUPTING RATING NEMA-5,000 AMP. AT 240 VOLTS.
E	1	RELAY, DPDT, 240 VOLT.
F	1	SPST 20 AMP. SWITCH ON DOOR, TO TURN LIGHT ON WHEN DOOR IS OPEN.
G	1	INCANDESCENT LIGHTING FIXTURE ENCLOSED AND GASKETED WITH 60 WATT, 120 V. LAMP.
H	1	20 AMP., 120 VOLT., DUPLEX RECEPTACLE, GFCI.
I	1	COPPER GROUND BUS 1/4" x 1" x 12" LONG MOUNTED ON PANEL WITH LUGS AND 4 SPARE LUGS.
J	1	HAND-OFF-AUTOMATIC SWITCH. SQUARE D 9001 KYK-111 OR EQUIVALENT.
K	1	COPPER GROUND BUS 1/4" x 1" x 12" LONG MOUNTED ON PANEL WITH LUGS AND 4 SPARE LUGS.
L	1	PHOTOCELL TERMINAL BLOCK
M	1	CABINET MOUNT, BUTTON TYPE PHOTOCELL.

NOTES:

- ALL DIMENSIONS ARE IN INCHES UNLESS OTHERWISE SHOWN.
- FOUNDATION SIZE SHALL BE COORDINATED WITH CABINET SIZE AND MANUFACTURER.
- IN FRONT OF CONTROL CABINET DOOR, REMOVE VEGETATION AND 2" TOP SOIL. LEVEL THE AREA AND ON TOP, PLACE LENGTH WISE PARALLEL TO CONTROL CABINET, A CONCRETE PAD 36" x 60" x 4" MINIMUM SIZE. THE COST OF LABOR AND MATERIALS ARE INCLUDED IN THE COST OF THE CONTROLLER.
- DOOR SHALL BE CONSTRUCTED FROM SAME TYPE OF MATERIAL AND THICKNESS AS CABINET.
- DOOR SHALL BE EQUIPPED WITH THREE POINT LATCHING MECHANISM WITH NYLON ROLLERS AT TOP THE BOTTOM.
- DOOR HINGE SHALL BE A HEAVY GAUGE CONTINUOUS HINGE WITH A 1/4" DIA. STAINLESS STEEL HINGE PIN.
- ALL EXTERNAL HARDWARE SHALL BE STAINLESS STEEL.
- CONTROL WIRING TO BE #12 AWG, 600V, TYPE "SIS" GRAY SWITCH BOARD WIRE, STRANDED COPPER.
- METER BOX SHALL BE MOUNTED ON THE SIDE OF CONTROL CABINET, NEAREST TO THE SERVICE POLE.
- CABINETS SHALL BE PRIMED AND PAINTED AS SPECIFIED.
- THE HEADS OF CONNECTORS SCREWS SHALL BE PAINTED WHITE FOR NEUTRAL BAR CONNECTION AND GREEN FOR GROUND BAR CONNECTORS.
- ALL WIRING WITHIN THE CABINET SHALL BE COLOR CODED AS INDICATED.
R = RED BL = BLUE W = WHITE
B = BLACK Y = YELLOW G = GREEN
- PROVIDE SEALING GROMMETS FOR ALL OPEN WIRING EXTENDED FROM DEVICES IN BOXES OR CABINETS WITHIN THE CONTROL CABINET.
- ALL WIRING SHALL BE NEATLY DRESSED AND SUPPORTED.
- THE CONTROLLER SHALL BE CONSTRUCTED TO U.L. STD. 508 AND BEAR THE U.L. LABEL "ENCLOSED INDUSTRIAL CONTROL PANEL".
- 12" x 16" STAINLESS STEEL EXTERIOR NAMEPLATE SHALL BE ENGRAVED WITH "LAKE COUNTY FOREST PRESERVES DISTRICT LIGHTING CONTROLS" UNLESS OTHERWISE SPECIFIED.



FILE NAME = H:\PROJECTS\2013\Rollins\Design\Lighting\80226837.dwg - Rollins-Lighting.dwg