

PROGRAM AND OFFICE ENGINEER CHARLES F. RIDDLER, P.E. 847-705-4406 SCHAUMBURG, IL  
 CONSULTING ENGINEER: ENGINEERING ENTERPRISES, INC. CONTACT: JAMES R. LENZINI 630-466-6700

|                    |                           |                    |                    |                |
|--------------------|---------------------------|--------------------|--------------------|----------------|
| F.A.P. RTE.<br>363 | SECTION<br>10-00404-00-CH | COUNTY<br>KANE     | TOTAL SHEETS<br>99 | SHEET NO.<br>1 |
| ILLINOIS           |                           | CONTRACT NO. 63818 |                    |                |

STATE OF ILLINOIS  
 DEPARTMENT OF TRANSPORTATION  
 DIVISION OF HIGHWAYS

**PLANS FOR PROPOSED  
 FEDERAL-AID HIGHWAY**

**FAP 363 (FABYAN PARKWAY)  
 EAST OF FAU 2503 (IL ROUTE 25) TO NAGEL BOULEVARD  
 WIDENING / INSTALL BI-DIRECTIONAL LEFT TURN LANES  
 SECTION 10-00404-00-CH  
 PROJECT NUMBER: CMM-9003(627)  
 KANE COUNTY  
 JOB NUMBER: C-91-496-10**

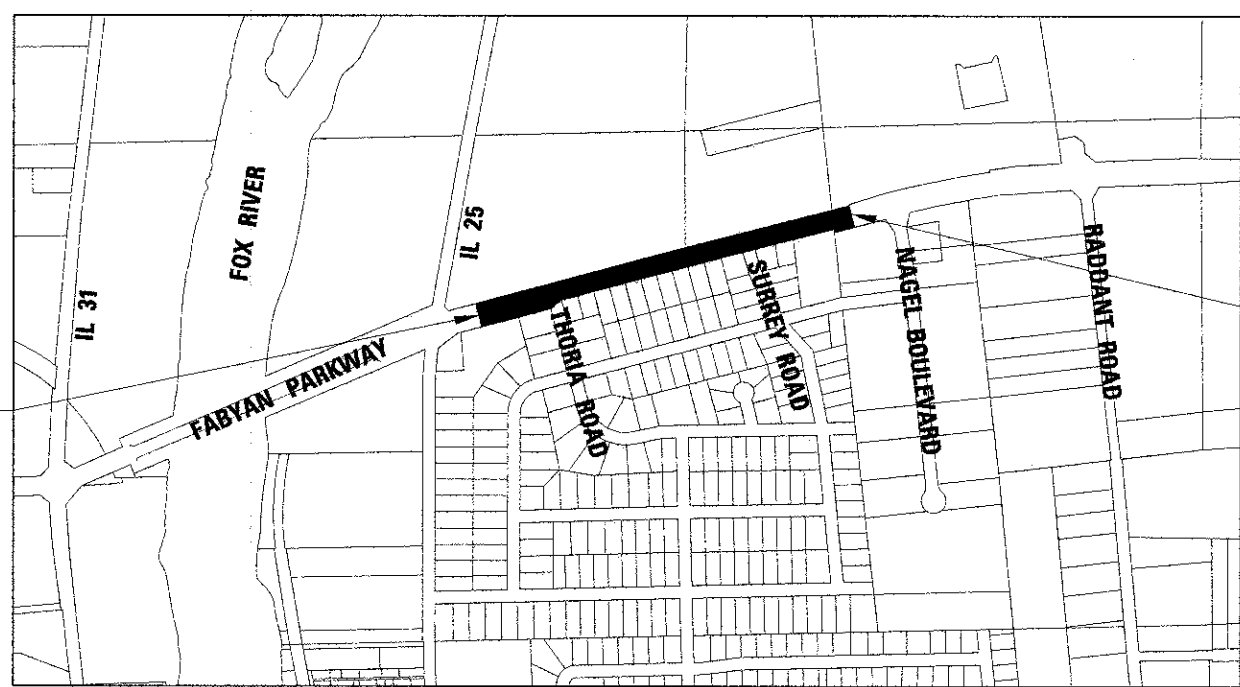
FOR INDEX OF SHEETS, HIGHWAY  
 STANDARDS AND LEGEND  
 SEE SHEET NO. 2

FAP 363 FABYAN PARKWAY  
 3094(33) OTHER PRINCIPAL ARTERIAL 2.92 (FD-20)  
 ADT: 26,028 (2011)  
 ADT: 33,990 (2033)  
 POSTED SPEED: 45 MPH  
 DESIGN SPEED: 45 MPH



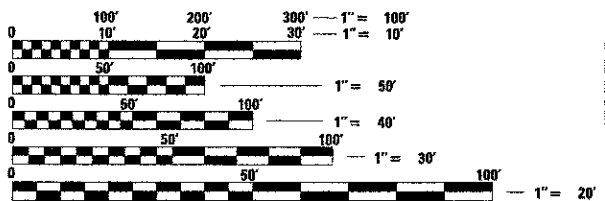
LOCATION OF SECTION INDICATED THIS: - ■ -

PROJECT LOCATED IN THE  
 CITY OF BATAVIA AND  
 THE CITY OF GENEVA



PROJECT ENDS  
 STA. 122+55.00  
 FABYAN PKWY

PROJECT BEGINS  
 STA. 102+46.00  
 FABYAN PKWY



FULL SIZE PLANS HAVE BEEN PREPARED USING STANDARD  
 ENGINEERING SCALES. REDUCED SIZED PLANS WILL NOT  
 CONFORM TO STANDARD SCALES. IN MAKING MEASUREMENTS  
 ON REDUCED PLANS, THE ABOVE SCALES MAY BE USED.

J.U.L.I.E.  
 JOINT  
 UTILITY  
 LOCATION  
 INFORMATION FOR  
 EXCAVATION  
 CALL 811

Know what's below.  
 Call before you dig.

NW 1/4 SEC. 14, NE 1/4 SEC. 15, T39N, R8E, 3RD P.M.  
 GENEVA & BATAVIA TOWNSHIP  
 LOCATION MAP (SCALE 1" = 500')

TOTAL GROSS AND NET LENGTH OF PROJECT = 2,009 FEET (0.380 MILES)

STATE OF ILLINOIS  
 DEPARTMENT OF TRANSPORTATION  
 DIVISION OF HIGHWAYS

APPROVED JANUARY 28, 2013  
*[Signature]*  
 KANE COUNTY DIVISION OF TRANSPORTATION, COUNTY ENGINEER

PASSED FEBRUARY 20, 2013  
*[Signature]*  
 DISTRICT 1 ENGINEER OF LOCAL ROADS & STREETS

RELEASING FOR BID  
 BASED ON LIMITED  
 REVIEW February 21, 2013  
*[Signature]*  
 DEPUTY DIRECTOR OF HIGHWAYS, REGION 1 ENGINEER

DATE: 1/24/13

*[Signature]*  
 JAMES R. LENZINI

LICENSE  
 EXPIRES: NOVEMBER 30, 2013

SEAL

**Engineering Enterprises, Inc.**  
 CONSULTING ENGINEERS  
 52 Wheeler Road  
 Sugar Grove, Illinois 60554  
 Phone: (630) 466-6700

CONTRACT NO. 63818

PRINTED BY THE AUTHORITY OF THE STATE OF ILLINOIS