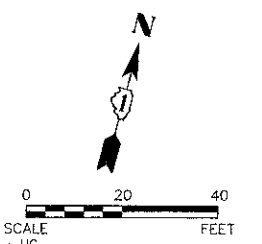
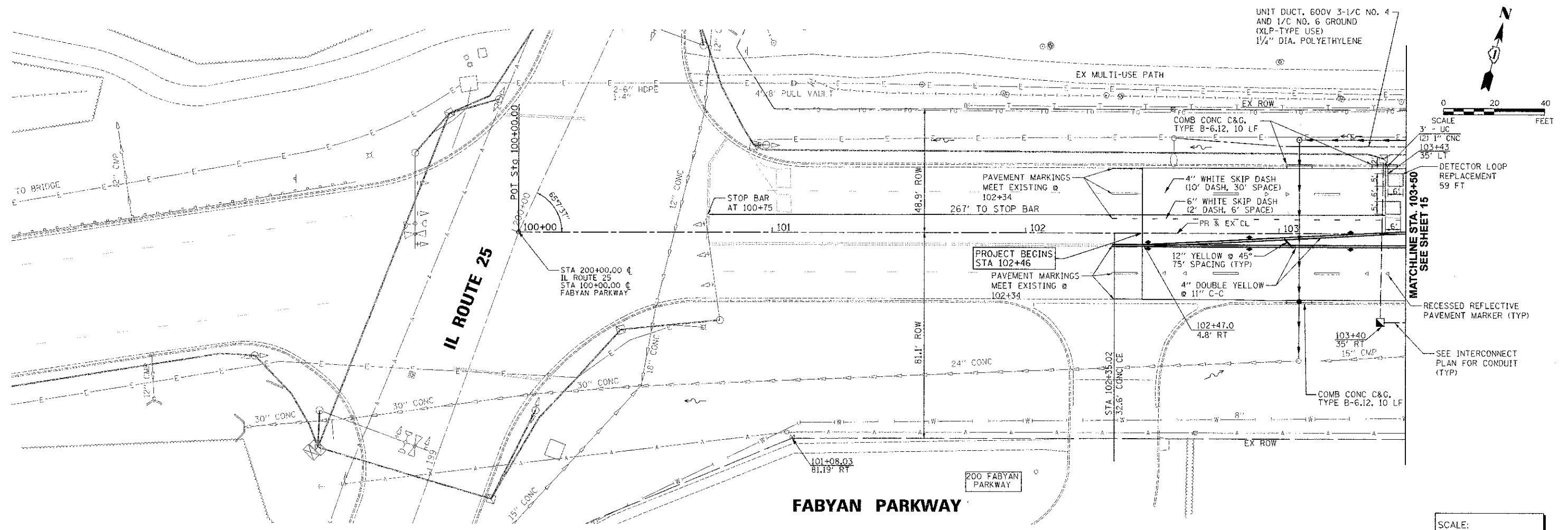


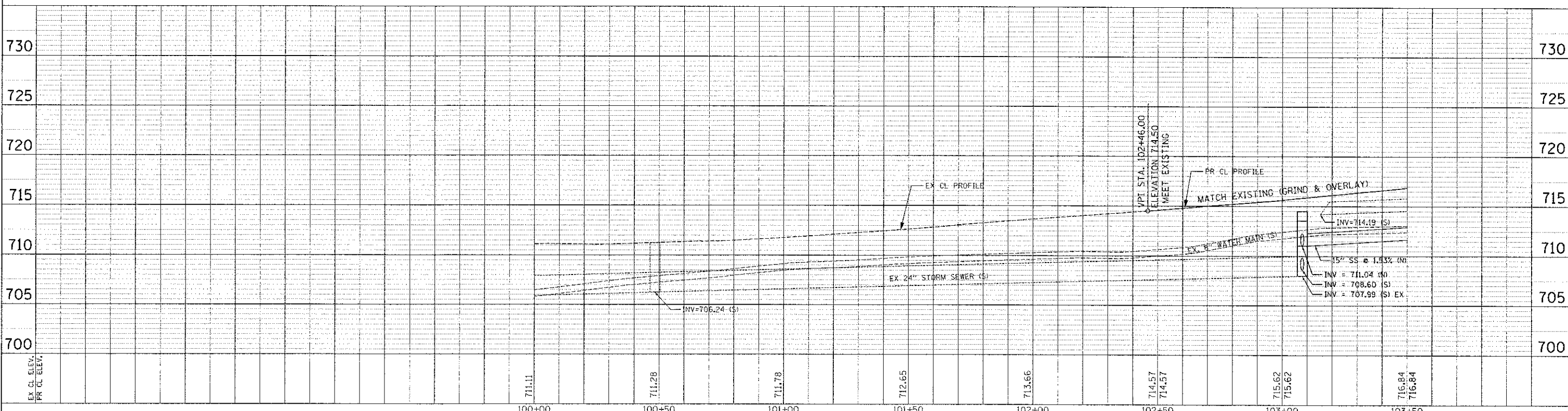
PLAN	DATE
BY	
NO. OF SHEETS	
NO. OF SHEETS CHECKED	
NO. OF SHEETS REVISIONS	
NO. OF SHEETS NOTED	

PROFILE	DATE
BY	
NO. OF SHEETS	
NO. OF SHEETS CHECKED	
NO. OF SHEETS REVISIONS	
NO. OF SHEETS NOTED	

Plot Date: 2/4/2013 9:25:49 AM By: jsschmidt



SCALE:
HORIZONTAL 1" = 20'
VERTICAL 1" = 5'



Engineering Enterprises, Inc. CONSULTING ENGINEERS 52 Wheeler Road Sugar Creek, Illinois 60554 630.466.6700 / www.eeinc.com	KANE COUNTY DIVISION OF TRANSPORTATION 41W011 BURLINGTON ROAD ST. CHARLES, IL 60175	DESIGNED FW, SWM	REVISED JPS 02/04/13	STATE OF ILLINOIS DEPARTMENT OF TRANSPORTATION	FABYAN PARKWAY PLAN AND PROFILE	F.A.P. R.T.E. 363	SECTION 10-00404-00-CH	COUNTY KANE	TOTAL SHEETS 59	SHEET NO. 14
		DRAWN JPS	REVISED -			C-91-496-10	CONTRACT NO. 63818			
DATE 12/7/12		REVISIONS		SCALE: 1"=20' SHEET NO. 1 OF 5 SHEETS STA. 100+00 TO STA. 103+50		ILLINOIS FED. AID PROJECT CMM-900316271				