

06-14-13 LETTING ITEM 043

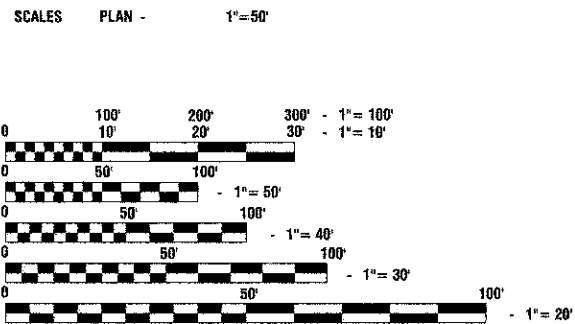
INDEX OF SHEETS

1. COVER SHEET, INDEX OF SHEETS & STATE STANDARDS
2. SUMMARY OF QUANTITIES & GENERAL NOTES
3. TYPICAL CROSS SECTIONS
4. PAVEMENT PLANS
5. PAVEMENT MARKING PLANS
- 6.-11. IDOT DISTRICT 1 STANDARD DETAILS

HIGHWAY STANDARDS

000001-06	STANDARD SYMBOLS, ABBREVIATIONS, AND PATTERNS
424001-07	PERPENDICULAR CURB RAMPS FOR SIDEWALKS
424006-01	DIAGONAL CURB RAMPS FOR SIDEWALKS
424011-01	CORNER PARALLEL CURB RAMPS FOR SIDEWALKS
424016-01	MID-BLOCK CURB RAMPS FOR SIDEWALKS
424021-01	DEPRESSED CORNER FOR SIDEWALKS
424026-01	ENTRANCE / ALLY PEDESTRIAN CROSSINGS
442201-03	CLASS C AND D PATCHES
606001-05	CONCRETE CURB TYPE AND COMBINATION CURB AND GUTTER
701501-06	URBAN LANE CLOSURE, 2L, 2W, UNDIVIDED
701701-08	URBAN LANE CLOSURE, MULTILANE INTERSECTION
701801-05	SIDEWALK, CORNER OR CROSSWALK CLOSURE
701901-02	TRAFFIC CONTROL DEVICES
780001-03	TYPICAL PAVEMENT MARKINGS
781001-03	TYPICAL APPLICATIONS RAISED REFLECTIVE PAVEMENT MARKERS

	<u>STATE STREET</u>
2012 ADT -	10,900
2030 ADT -	10,900
POSTED SPEED LIMIT -	30 mph
DESIGN PERIOD -	20 YEARS
DESIGN SPEED LIMIT -	30 mph
STREET CLASSIFICATION -	CLASS III



FULL SIZE PLANS HAVE BEEN PREPARED USING STANDARD ENGINEERING SCALES, REDUCED SIZED PLANS WILL NOT CONFORM TO STANDARD SCALES, IN MAKING MEASUREMENTS ON REDUCED PLANS, THE ABOVE SCALES MAY BE USED.

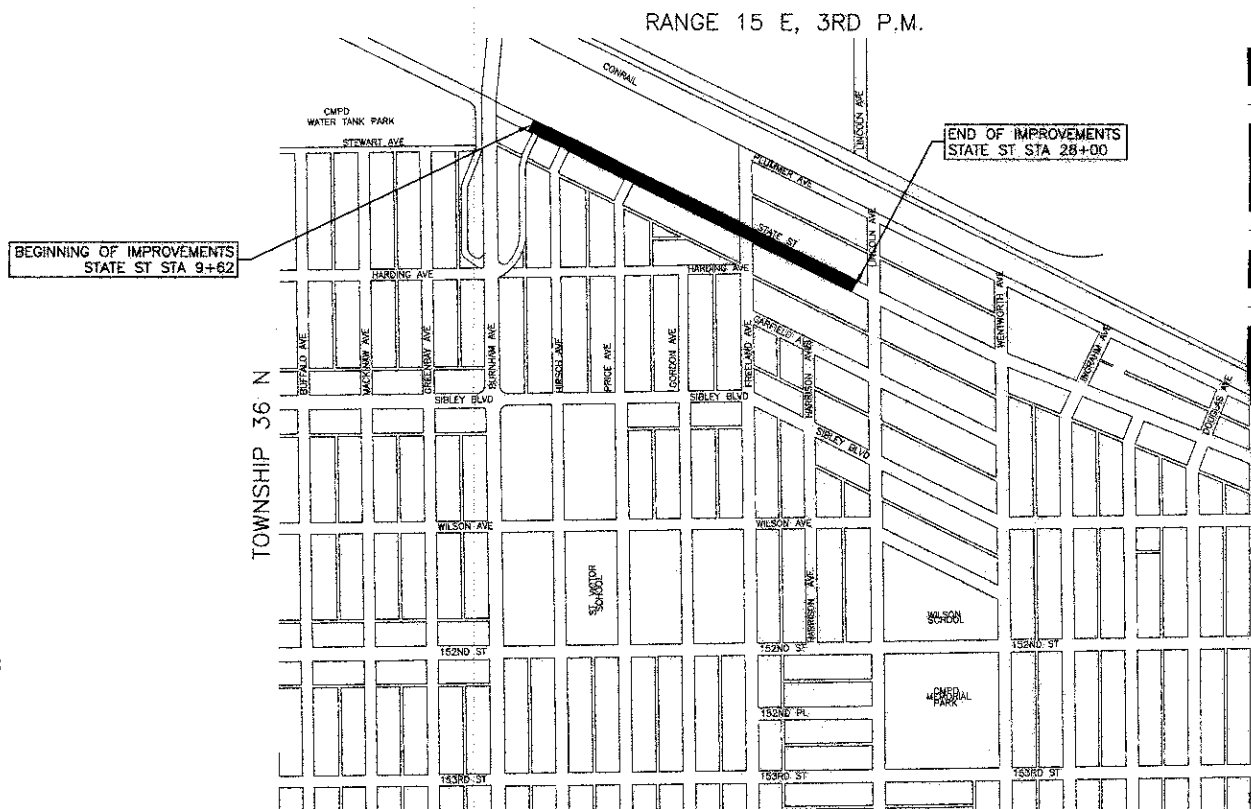
J. U. L. I. E.
JOINT UTILITY LOCATION INFORMATION FOR EXCAVATION
1-800-892-0123 or 811

CONTRACT NO. 63823

STATE OF ILLINOIS
DEPARTMENT OF TRANSPORTATION
DIVISION OF HIGHWAYS

PLANS FOR PROPOSED FEDERAL AID HIGHWAY

FAU 3596 (STATE STREET)
FAU 2943 (BURNHAM AVENUE) TO LINCOLN AVENUE
SECTION NO.: 12-00152-00-RS
PROJECT NO.: M-4003(118)
ROADWAY RESURFACING IMPROVEMENTS
CITY OF CALUMET CITY
COOK COUNTY
JOB NO. C-91-119-13

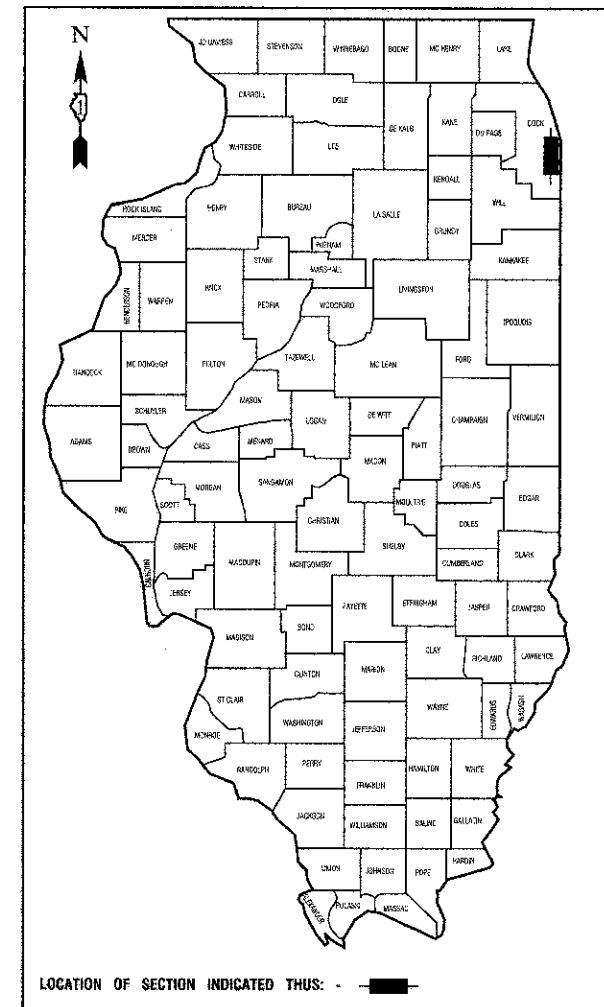


LOCATION MAP

GROSS LENGTH=1,838 FEET=0.35 MILES
NET LENGTH=1,838 FEET=0.35 MILES

F. A. U. NO.	SECTION	COUNTY	TOTAL SHEETS	SHEET NO.
3596	12-00152-00-RS	COOK	11	1
STA. 10+00	TO STA. 50+74.26			
FED. ROAD DIST. NO.	BLDG. NO.	FED. PROJ. NO.	M-4003(118)	

CONTRACT #63823



STATE OF ILLINOIS DEPARTMENT OF TRANSPORTATION
DIVISION OF HIGHWAYS

Approved: *March 14, 2013*
Michael J. Brown
Mayor, City of Calumet City

Passed: *April 5, 2013*
C. Holt
District 1 Engineer of Local Roads & Streets

Released for Bid Based on Limited Review: *April 10, 2013*
John F. ...
Deputy Director of Highways, Region 1 Engineer

PRINTED BY THE AUTHORITY OF THE STATE OF ILLINOIS

PREPARED BY OR UNDER THE DIRECT SUPERVISION OF:
[Signature]
3/14/2013

[Professional Engineer Seal]
LICENSE EXPIRES: 11/30/13

PROGRAM AND OFFICE ENGINEER: CHARLES F. RIDDLE, P.E. (847) 705-4406, SCHAMBURG, IL
CONSULTANTS: ROBINSON ENGINEERING, LTD. 708-331-6700

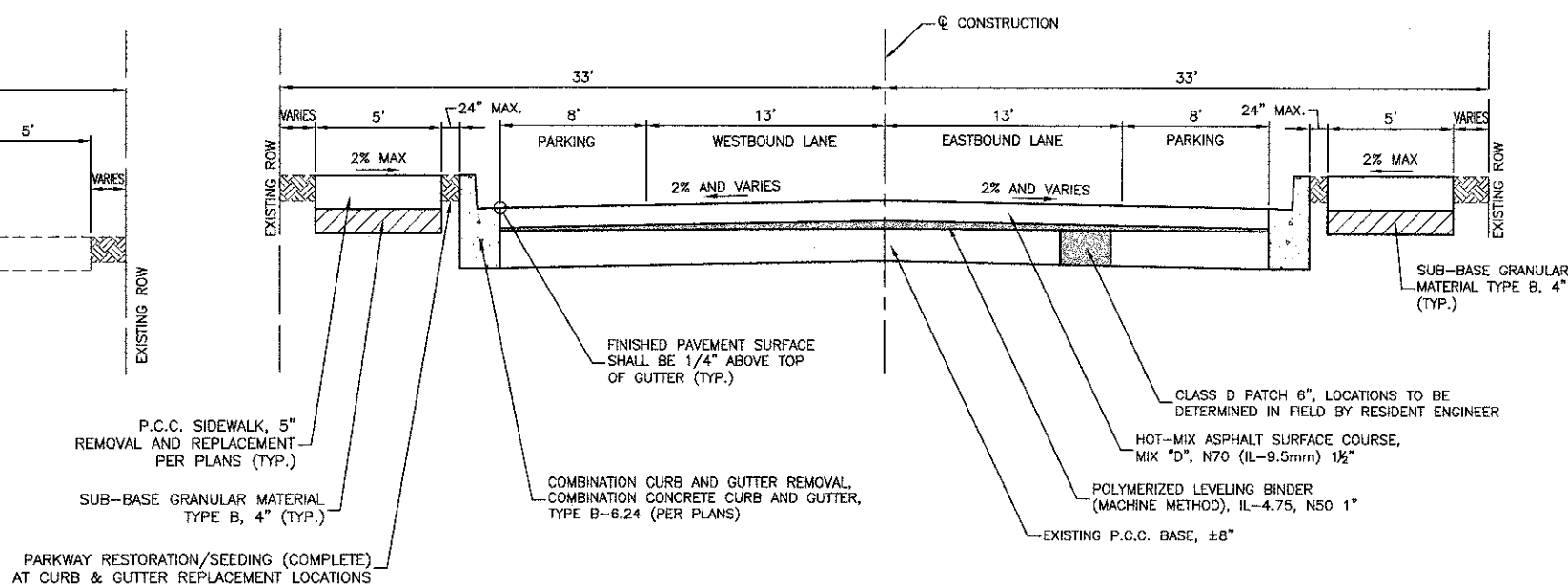
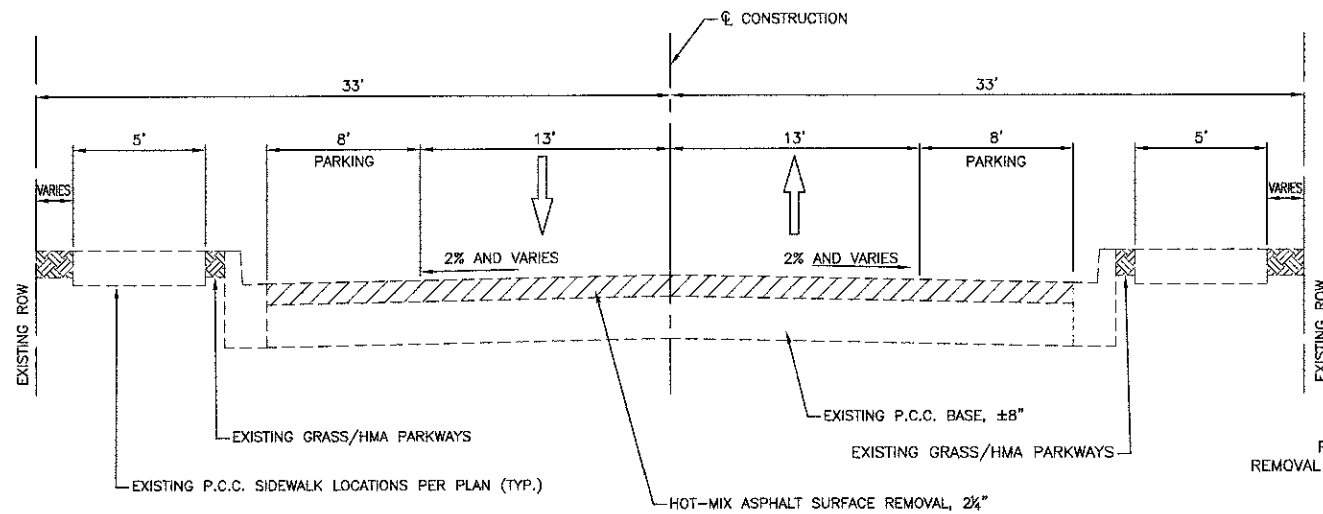
SUMMARY OF QUANTITIES				
S.I.	CODE NO.	PAY ITEM	UNIT	QUANTITY
	31101200	SUBBASE GRANULAR MATERIAL, TYPE B 4"	SQ YD	35
	40600100	BITUMINOUS MATERIALS (PRIME COAT)	GALLON	4350
	40600400	MIXTURE FOR CRACKS, JOINTS, AND FLANGWAYS	TON	40
	40600827	POLYMERIZED LEVELING BINDER (MACHINE METHOD), IL-4.75, N50	TON	595
	40600982	HOT-MIX ASPHALT SURFACE REMOVAL - BUTT JOINT	SQ YD	135
	40603335	HOT-MIX ASPHALT SURFACE COURSE, MIX "D", N50	TON	35
	40603340	HOT-MIX ASPHALT SURFACE COURSE, MIX "D", N70	TON	802
	42400200	PORTLAND CEMENT CONCRETE SIDEWALK 5 INCH	SQ FT	300
	42400800	DETECTABLE WARNINGS	SQ FT	64
	44000158	HOT-MIX ASPHALT SURFACE REMOVAL, 2 1/4"	SQ YD	9600
	44000600	SIDEWALK REMOVAL	SQ FT	300
	44000500	COMBINATION CURB AND GUTTER REMOVAL	FOOT	285
	44201717	CLASS D PATCHES, TYPE II, 6 INCH	SQ YD	59
	44201721	CLASS D PATCHES, TYPE III, 6 INCH	SQ YD	65
	44201723	CLASS D PATCHES, TYPE IV, 6 INCH	SQ YD	468
	60300305	FRAMES AND LIDS TO BE ADJUSTED	EACH	24
	X6030310	FRAMES AND LIDS TO BE ADJUSTED (SPECIAL)	EACH	16
	60605000	COMBINATION CONCRETE CURB AND GUTTER, TYPE B-6.24	FOOT	285
	67100100	MOBILIZATION	L SUM	1
	70102620	TRAFFIC CONTROL AND PROTECTION, STANDARD 701501	L SUM	1
	70102635	TRAFFIC CONTROL AND PROTECTION, STANDARD 701701	L SUM	1
	70102640	TRAFFIC CONTROL AND PROTECTION, STANDARD 701801	L SUM	1
	70300100	SHORT TERM PAVEMENT MARKING	FOOT	185

* -- INDICATES SPECIALTY ITEMS

SUMMARY OF QUANTITIES				
S.I.	CODE NO.	PAY ITEM	UNIT	QUANTITY
	70301000	WORK ZONE PAVEMENT MARKING REMOVAL	SQ FT	62
*	78000200	THERMOPLASTIC PAVEMENT MARKING - LINE 4"	FOOT	2400
*	78000400	THERMOPLASTIC PAVEMENT MARKING - LINE 6"	FOOT	120
*	78000650	THERMOPLASTIC PAVEMENT MARKING - LINE 24"	FOOT	75
*	78100100	RAISED REFLECTIVE PAVEMENT MARKER	EACH	80
	78300200	RAISED REFLECTIVE PAVEMENT MARKER REMOVAL	EACH	80
	XX006343	SEEDING (COMPLETE)	SQ YD	75
	XX007278	PARKWAY RESTORATION	SQ YD	55

GENERAL NOTES

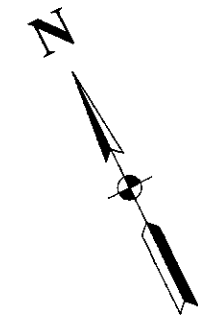
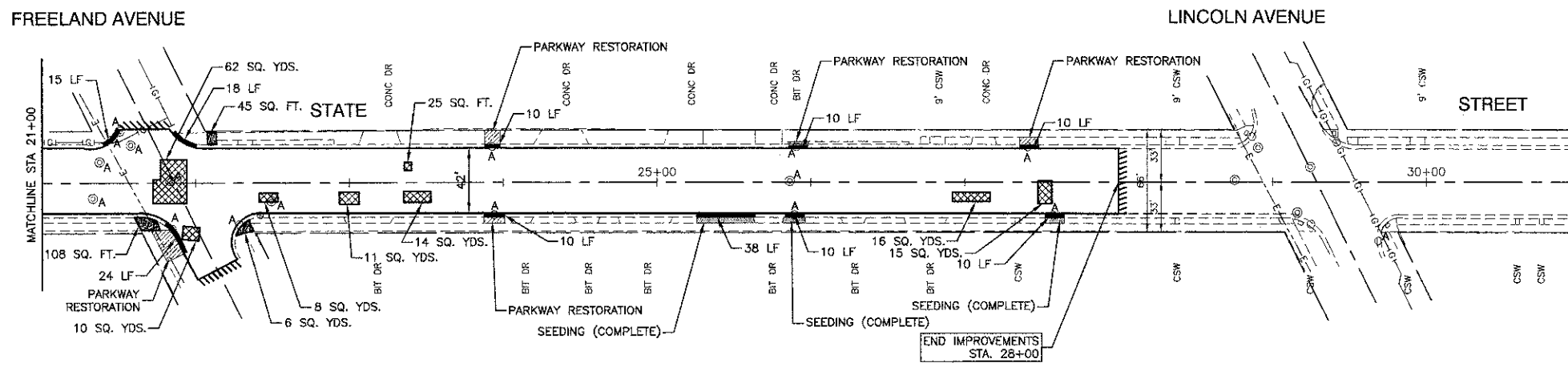
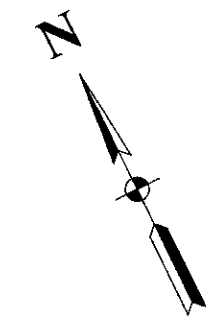
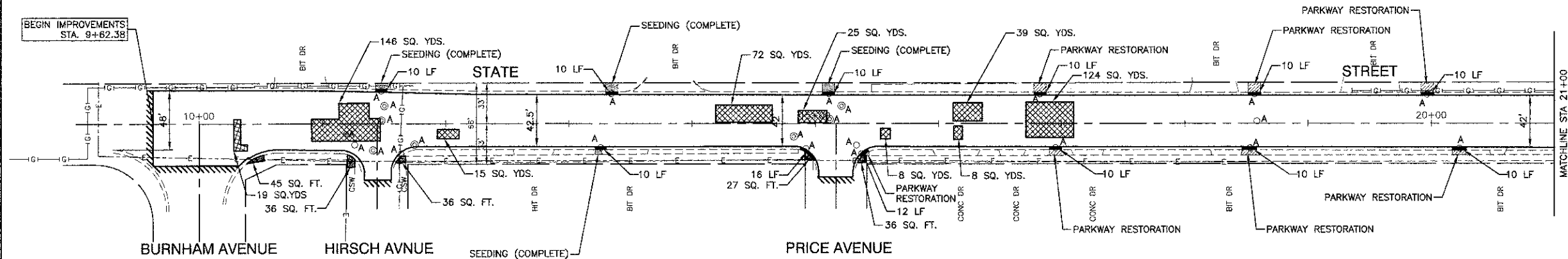
- BEFORE STARTING ANY EXCAVATION THE CONTRACTOR SHALL CALL "J.U.L.I.E." AT (800) 892-0123 AND (312) 744-7000 FOR FIELD LOCATIONS OF BURIED ELECTRIC, TELEPHONE AND GAS UTILITIES. (48 HOUR NOTIFICATION REQUIRED)
- UTILITIES INDICATED ON THE PLANS ARE PROVIDED FOR THE CONTRACTORS USE AND ARE BASED UPON INFORMATION AVAILABLE AT THE TIME OF THE ADVERTISEMENT FOR BIDS. THE OWNER AND ENGINEER DO NOT GUARANTEE THE ACCURACY OF UTILITY INFORMATION.
- IT SHALL BE THE CONTRACTOR'S RESPONSIBILITY TO VERIFY ALL DIMENSIONS AND CONDITIONS EXISTING IN THE FIELD PRIOR TO CONSTRUCTION AND ORDERING OF MATERIALS.
- SCHEDULES INCLUDED IN THE PLANS HAVE BEEN PREPARED FROM FIELD NOTES. EXACT LOCATIONS FOR PATCHING SHALL BE DETERMINED IN THE FIELD BY THE ENGINEER.
- THE THICKNESS OF HMA MIXTURE STATED IN THE SPECIFICATIONS IS THE NOMINAL THICKNESS. DEVIATIONS FROM THE NOMINAL THICKNESS WILL BE PERMITTED WHEN SUCH DEVIATIONS OCCUR DUE TO IRREGULARITIES IN THE EXISTING SURFACE OR BASE ON WHICH THE HMA SURFACE IS PLACED.
- ACCESS TO DRIVEWAYS SHALL BE MAINTAINED AT ALL TIMES BY LIMITING CURB AND GUTTER REPAIR TO ONE-HALF THE DRIVEWAY WIDTH AT ONE TIME AS WELL AS TEMPORARY AGGREGATE.
- ANY LOOSE MATERIAL DEPOSITED IN THE FLOW LINE OF DITCHES, GUTTERS OR OTHER DRAINAGE STRUCTURES SHALL BE REMOVED BY THE END OF EACH DAY BY THE CONTRACTOR AT THEIR EXPENSE.
- THE CONTRACTOR WILL NOT BE ALLOWED TO SET UP A YARD OR FIELD OFFICE ON RIGHT OF WAY WITHOUT WRITTEN PERMISSION FROM THE ENGINEER.
- THE ENGINEER RESERVES THE RIGHT TO REDUCE THE PLAN QUANTITIES AS NECESSARY, BASED ON CURRENT FIELD CONDITIONS AND/OR AVAILABLE FUNDING.
- FOR WORK OUTSIDE THE LIMITS OF BRIDGE APPROACH PAVEMENT, ALL REFERENCES IN THE HIGHWAY STANDARDS AND STANDARD SPECIFICATIONS FOR REINFORCEMENT, DOWEL BARS AND TIE BARS IN PAVEMENT, SHOULDERS, CURB, GUTTER, COMBINATION CURB AND GUTTER AND MEDIAN, AND CHAIR SUPPORTS FOR GRC PAVEMENT, SHALL BE EPOXY COATED, UNLESS NOTED ON THE PLAN.



HOT-MIX ASPHALT MIXTURE REQUIREMENTS

MIXTURE TYPE	AIR VOIDS @ Ndes
RESURFACING	
HOT MIX ASPHALT SURFACE COURSE, MIX "D", N70(IL-9.5mm); 1 1/2"	4% @ 70 Gyr.
POLYMERIZED LEVELING BINDER (MACHINE METHOD), IL-4.75, N50, 1"	3.5% @ 50 Gyr.
PATCHING	
CLASS D PATCHES, TYPE I, II, III, IV (HMA BINDER IL-19.0mm), 6" (IN 3 LIFTS)	4% @ 70 Gyr.
PARKWAY RESTORATION	
HOT MIX ASPHALT SURFACE COURSE, MIX "D", N70(IL-9.5mm); 4"	4% @ 50 Gyr.

- NOTES:
1. THE UNIT WEIGHT USED TO CALCULATE ALL HOT-MIX ASPHALT SURFACE MIXTURE QUANTITIES IS 112 LBS/SY/IN.
 2. THE "AC TYPE" FOR POLYMERIZED HMA MIXES SHALL BE "SBS/SBR PG 76-22" AND FOR NON-POLYMERIZED HMA THE "AC" TYPE SHALL BE "PG 64-22" UNLESS MODIFIED BY DISTRICT ONE SPECIAL PROVISIONS. FOR "PERCENT OF RAP" SEE DISTRICT ONE SPECIAL PROVISIONS.
 3. CONTRACTOR SHALL MILL FIRST BEFORE PATCHING.



- LEGEND**
- HMA PAVEMENT REPAIR (CLASS D PATCHES)
 - CONCRETE SIDEWALK REMOVAL AND REPLACEMENT
 - HOT MIX ASPHALT SURFACE REMOVAL -- BUTT JOINT (10' UNLESS OTHERWISE INDICATED)
 - HOT-MIX ASPHALT SURFACE REMOVAL, 2 1/4" POLYMERIZED LEVELING BINDER (MACHINE METHOD), N50, 1" HOT-MIX ASPHALT SURFACE COURSE, MIX "D", N70, 1 1/2"
 - COMBINATION CURB AND GUTTER REMOVAL AND REPLACEMENT
 - PARKWAY RESTORATION
 - SEEDING (COMPLETE)
 - "A" CATCH BASIN TO BE ADJUSTED, MANHOLE TO BE ADJUSTED, VALVE BOX TO BE ADJUSTED, FRAME & LID TO BE ADJUSTED, FRAME & LID TO BE ADJUSTED (SPECIAL)
 - ⊙ EXISTING MANHOLE
 - EXISTING CATCH BASIN
 - ⊙ EXISTING VALVE BOX

- NOTES:**
1. DETECTABLE WARNINGS ARE TO BE INSTALLED AT LOCATIONS OF SIDEWALK REMOVAL AND REPLACEMENT. CONTRACTOR TO POSITION AND PLACE DETECTABLE WARNINGS AT THE DIRECTION OF THE ENGINEER AND HIGHWAY STANDARDS IN ACCORDANCE WITH ADA REQUIREMENTS.
 2. LIMIT OF CONSTRUCTION ON ALL SIDE STREETS IS THE RADIUS RETURN PLUS 10' BUTT JOINT OR ROW AS NOTED.
 3. ACCESS TO ALL DRIVEWAYS SHALL BE MAINTAINED UPON COMPLETION OF EACH WORKDAY. RESIDENTS SHALL BE NOTIFIED 24 HOURS IN ADVANCE OF WHEN DRIVEWAY REPLACEMENT WILL TAKE PLACE.

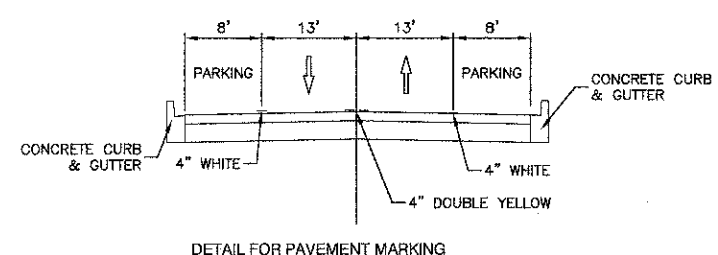
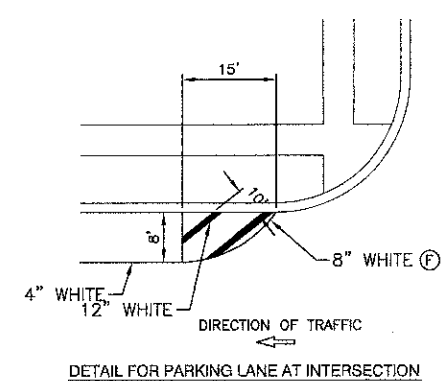
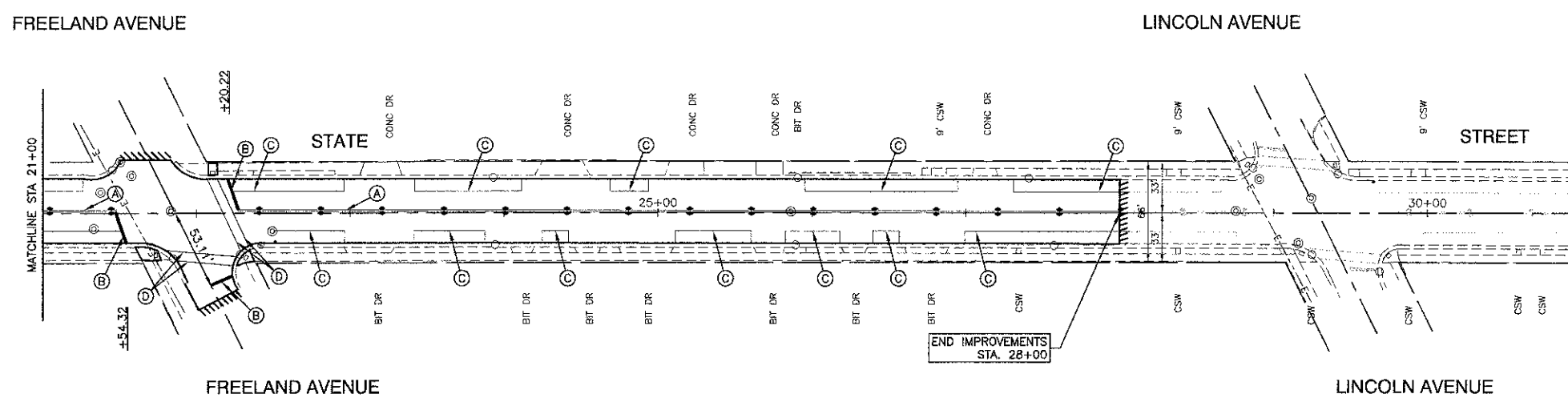
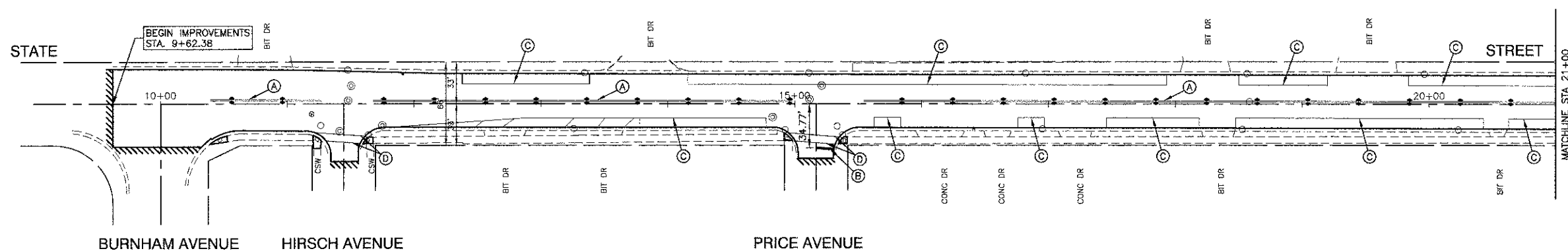
FILE NAME = 12592-PLAN-01 - IDOT P01
 USER NAME =
 PLOT SCALE =
 PLOT DATE = 1/25/13

DESIGNED -- EER	REVISED --
CHECKED -- ####	REVISED --
DRAWN -- MED	REVISED --
CHECKED -- ACAD	REVISED --

STATE OF ILLINOIS
 DEPARTMENT OF TRANSPORTATION

STATE STREET RESURFACING
 BURNHAM AVENUE TO LINCOLN AVENUE
 PAVEMENT PLAN
 SCALE: 1"=50'
 SHEET NO. 4 OF 11 SHEETS
 STA. 9+62 TO STA. 28+00

F.A.U. RTE. 3596	SECTION 12-00162-02-RS	COUNTY COOK	TOTAL SHEETS 11	SHEET NO. 4
CONTRACT NO. 63823				
FED. ROAD DIST. NO. 1 ILLINOIS FED. AID PROJECT M-4003(11B)				



- LEGEND**
- (A) THERMOPLASTIC PAVEMENT MARKING YELLOW, DOUBLE LINE, 4"
 - (B) THERMOPLASTIC PAVEMENT MARKING WHITE, 24"
 - (C) THERMOPLASTIC PAVEMENT MARKING WHITE, 4"
 - (D) THERMOPLASTIC PAVEMENT MARKING WHITE, 6"
 - ◆ TWO WAY AMBER MARKER 40' CENTER TO CENTER

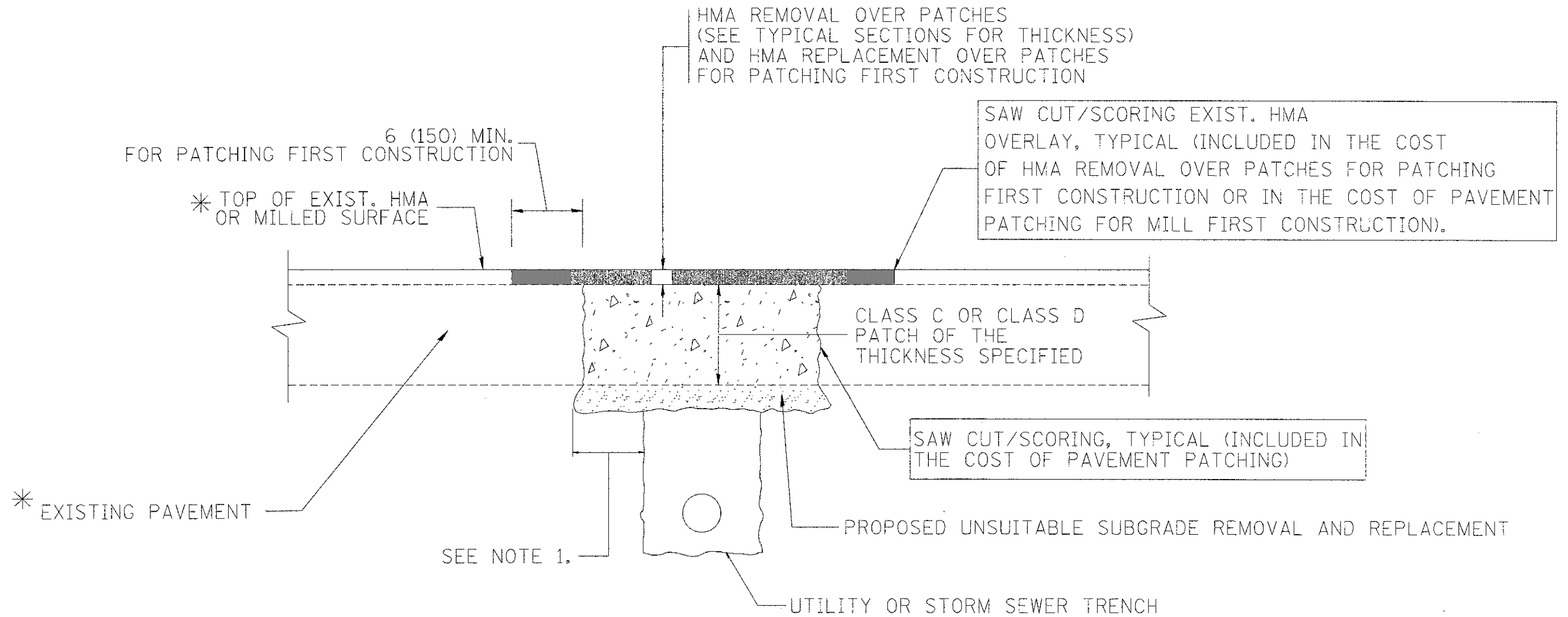
FILE NAME = 12992-PLAN-01 - IDOT P01 (3)

USER NAME =	DESIGNED -- EER	REVISED --
	CHECKED -- ###	REVISED --
PLOT SCALE =	DRAWN -- MED	REVISED --
PLOT DATE = 1/25/13	CHECKED -- ACAD	REVISED --

STATE OF ILLINOIS
DEPARTMENT OF TRANSPORTATION

STATE STREET RESURFACING BURNHAM AVENUE TO LINCOLN AVENUE PAVEMENT MARKING			
SCALE: 1"=50	SHEET NO. 5 OF 11 SHEETS	STA. 9+62 TO STA. 28+00	

F.A.U. RTE. 3596	SECTION 12-00152-00-RS	COUNTY COOK	TOTAL SHEETS 11	SHEET NO. 5
CONTRACT NO. 63823				
FED. ROAD DIST. NO. 1 ILLINOIS FED. AID PROJECT M-4003(118)				



* SEE TYPICAL SECTIONS FOR THICKNESS AND MATERIALS

NOTES:

1. THE WIDTH OF THE FULL DEPTH PATCH OVER A TRENCH SHALL BE 12 (300) WIDER ON EACH SIDE OF THE TRENCH.
2. FOR METHOD OF MEASUREMENT AND BASIS OF PAYMENT, SEE RECURRING SPECIAL PROVISION "PATCHING WITH HOT-MIX ASPHALT OVERLAY REMOVAL".

SEQUENCE OF CONSTRUCTION (PATCHING FIRST)

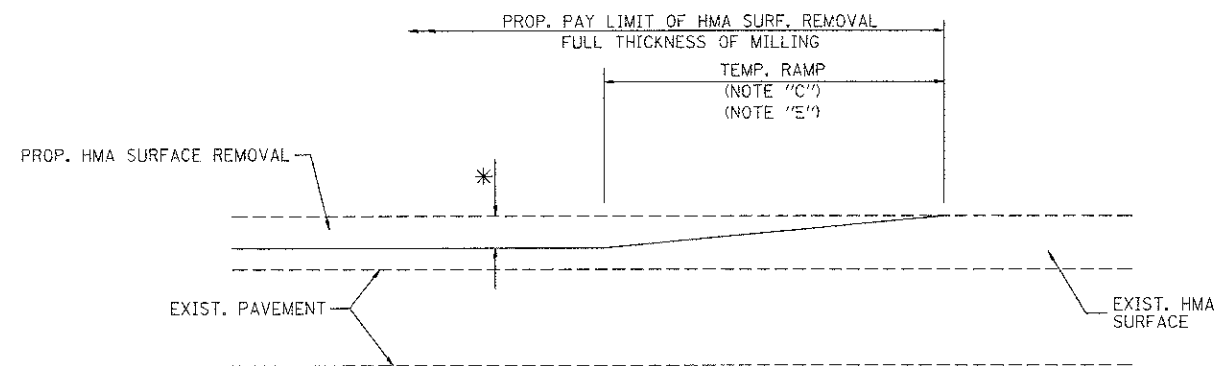
1. REMOVE THE EXISTING HMA MATERIAL OVER THE AREA TO BE PATCHED.
2. REMOVE AND REPLACE WITH CLASS C OR D PATCH.
3. REPLACE HMA MATERIAL OVER THE AREA TO BE PATCHED.

SEQUENCE OF CONSTRUCTION (MILLING FIRST)

1. MILL HMA FIRST IF THERE IS AT LEAST 4 1/2 INCHES OR MORE OF HMA MATERIAL ON TOP OF THE EXISTING PAVEMENT OR IF THE PAVEMENT IS FULL DEPTH HMA. A MINIMUM OF 2 INCHES OF HMA MATERIAL SHALL BE IN PLACE AFTER MILLING.
2. REMOVE AND REPLACE WITH FULL DEPTH CLASS D PATCHES TO TOP OF MILLED SURFACE.

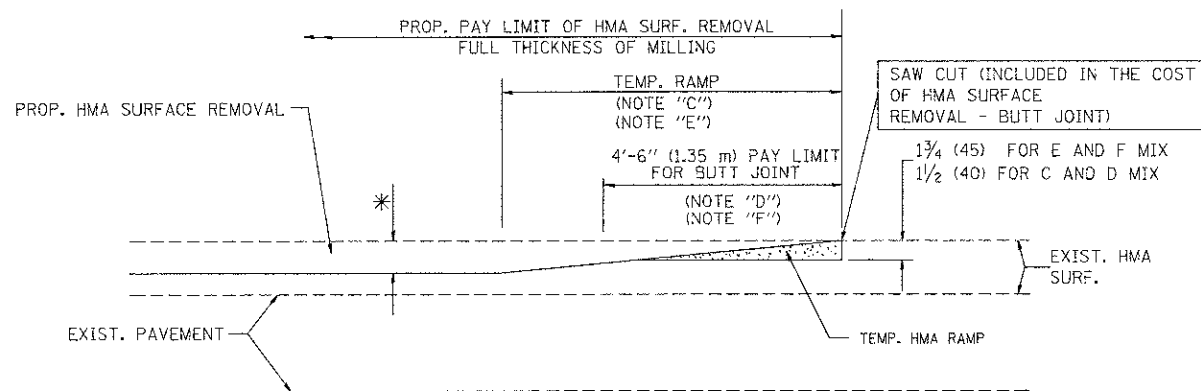
ALL DIMENSIONS ARE IN INCHES (MILLIMETERS) UNLESS OTHERWISE SHOWN.

FILE NAME = 12992-DT15-01 - BD-22	USER NAME = bauerd1	DESIGNED - R. SHAH	REVISED - A. ABBAS 04-27-98	STATE OF ILLINOIS DEPARTMENT OF TRANSPORTATION	PAVEMENT PATCHING FOR HMA SURFACED PAVEMENT		F.A.U. RTE.	SECTION	COUNTY	TOTAL SHEETS	SHEET NO.
		DRAWN -	REVISED - R. BORO 01-01-07		3590	12-00152-00-RS	COOK	11	6		
		PLDT SCALE = 50.000' / IN.	REVISED - R. BORO 09-04-07		BD400-04 (BD-22)		CONTRACT NO. 63823				
		PLDT DATE = 10/27/2008	REVISED - K. ENG 10-27-08		SCALE: NONE	SHEET NO. 6 OF 11 SHEETS	STA.	TO STA.	FED. ROAD DIST. NO. 1 ILLINOIS FED. AID PROJECTM-4003(118)		



MILLED TEMPORARY RAMP
(FOR BUTT JOINT AND HMA TAPER SEE DETAIL BELOW)

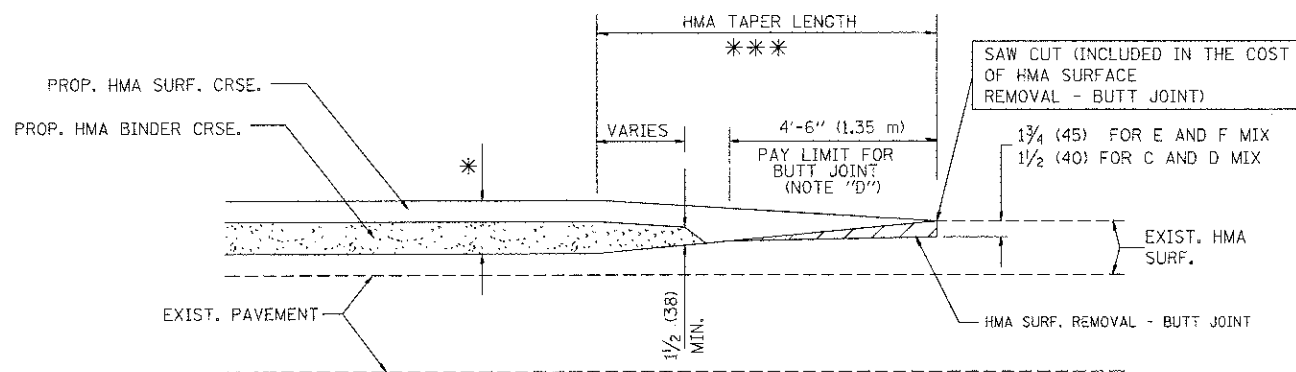
OPTION 1



HMA CONSTRUCTED TEMPORARY RAMP
(FOR BUTT JOINT AND HMA TAPER SEE DETAIL BELOW)

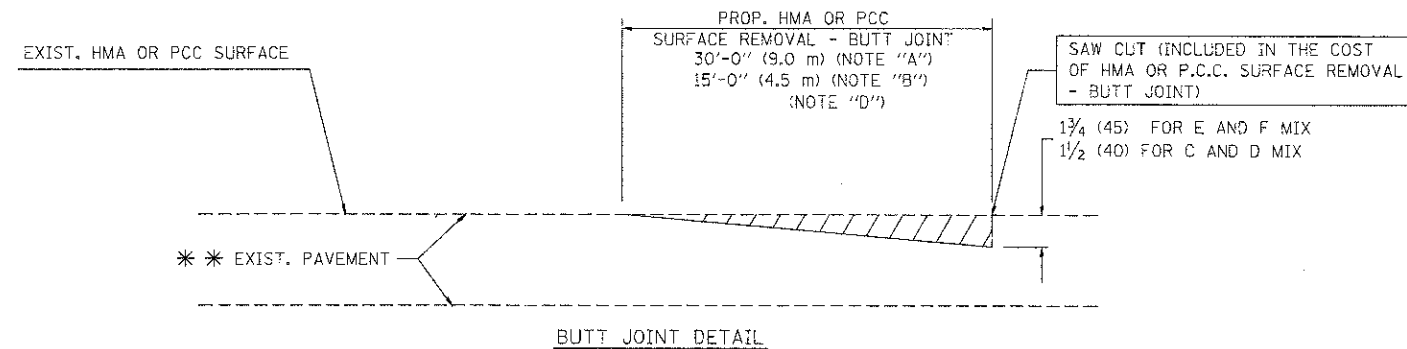
OPTION 2

TYPICAL TEMPORARY RAMP

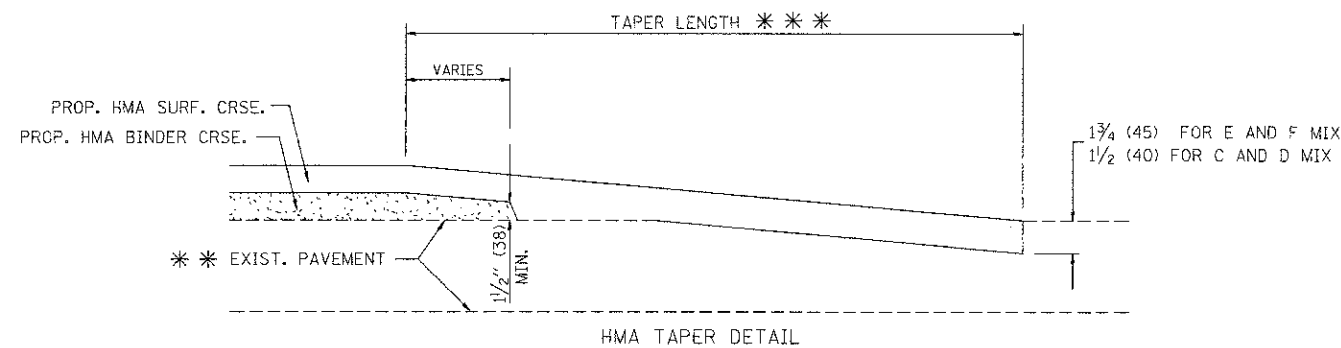


BUTT JOINT AND
HMA TAPER

TYPICAL BUTT JOINT AND HMA TAPER
FOR MILLING AND RESURFACING



BUTT JOINT DETAIL



HMA TAPER DETAIL

TYPICAL BUTT JOINT AND HMA TAPER
FOR RESURFACING ONLY

*** PC CONCRETE, HMA OR HMA RESURFACED PAVEMENT.

NOTES

- A: MAINLINE ROADWAYS AND MAJOR SIDE ROADS.
 - B: MINOR SIDE ROADS.
 - C: THE TEMP. RAMP SHALL BE CONSTRUCTED IMMEDIATELY UPON REMOVAL OF THE EXISTING HMA SURFACE.
 - D: THE BUTT JOINT SHALL BE CONSTRUCTED IMMEDIATELY PRIOR TO PLACING THE PROPOSED HMA COURSES.
 - E: TAPER THE TEMP. RAMP AT A RATE OF 3'-0" (900 mm) PER 1 INCH (25 mm) OF MILLING THICKNESS.
 - F: INSTALLATION AND REMOVAL OF THE 4'-6" (1.35 m) TEMP. RAMP IS INCLUDED IN COST OF HMA SURFACE REMOVAL - BUTT JOINT
 - G: SEE ARTICLE 406.08 AND 406.14 OF THE STANDARD SPECIFICATIONS FOR "HMA AND/OR PCC SURFACE REMOVAL, BUTT JOINT".
- * SEE TYPICAL SECTIONS FOR MILLING THICKNESS.
- *** 20'-0" (6.1 m) PER 1 (25) RESURFACING (NOTE "A")
10'-0" (3.0 m) PER 1 (25) RESURFACING (NOTE "B")

BASIS OF PAYMENT:

THE BUTT JOINT WILL BE PAID FOR AT THE CONTRACT UNIT PRICE PER SQUARE YARD (SQUARE METER) FOR "HOT-MIX ASPHALT SURFACE REMOVAL - BUTT JOINT" OR FOR "PORTLAND CEMENT CONCRETE SURFACE REMOVAL - BUTT JOINT".

ALL DIMENSIONS ARE IN INCHES (MILLIMETERS) UNLESS OTHERWISE SHOWN.

FILE NAME = 12592-D1/S-01 - BD-32

USER NAME = gaglianobt

DESIGNED - M. DE YONG

REVISED - R. SHAH 10-25-94

PLOT SCALE = 50.0000' / 1 IN.

DRAWN -

REVISED - A. ABBAS 03-21-97

PLOT DATE = 1/4/2008

CHECKED -

REVISED - M. GOMEZ 04-06-01

DATE - 06-13-90

REVISED - R. BORO 01-01-07

STATE OF ILLINOIS
DEPARTMENT OF TRANSPORTATION

BUTT JOINT AND
HMA TAPER DETAILS

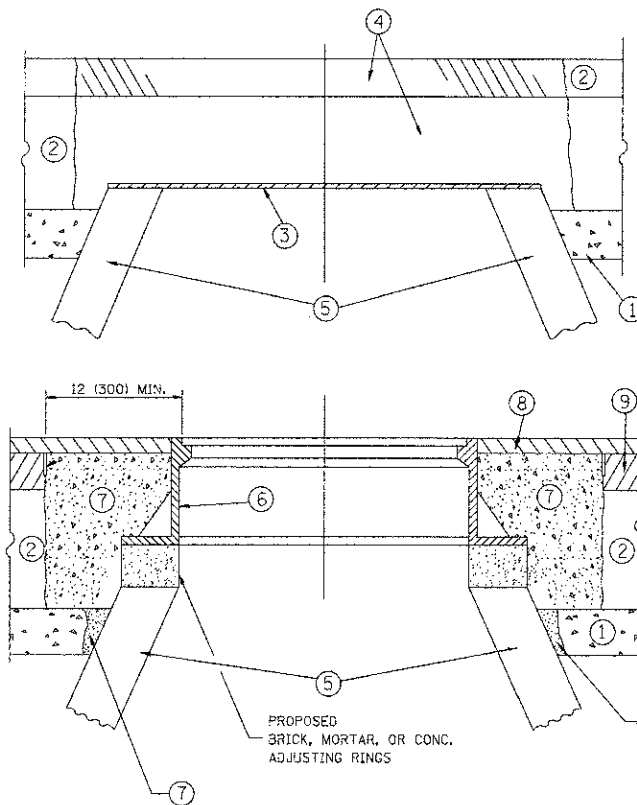
SCALE: NONE

SHEET NO.7 OF 11 SHEETS

STA.

TO STA.

F.A.U. RTE.	SECTION	COUNTY	TOTAL SHEETS	SHEET NO.
3596	12-00152-00-RS	COOK	11	7
BD400-05 BD32			CONTRACT NO. 63823	
FED. ROAD DIST. NO. 1 ILLINOIS FED. AID PROJECM-4003(11B)				



CONSTRUCTION PROCEDURES

STAGE 1 (BEFORE PAVEMENT MILLING)

- A) REMOVE A MINIMUM OF 12 (300) OF THE PAVEMENT FROM AROUND THE STRUCTURE.
- B) REMOVE THE EXISTING FRAME AND LID FROM THE STRUCTURE.
- C) COVER THE STRUCTURE OPENING WITH A 36 (900) DIAMETER METAL PLATE.
- D) BACKFILL WITH CRUSHED STONE AND A MINIMUM 1/2 (40) THICK HMA SURFACE MIX APPROVED BY THE ENGINEER.

STAGE 2 (AFTER PAVEMENT MILLING)

- A) REMOVE THE HMA SURFACE MIX AND CRUSHED STONE.
 - B) INSTALL THE FRAME AND LID; ADJUST THE FRAME TO ITS FINAL SURFACE ELEVATION.
 - C) THE SURROUNDING SPACE SHALL BE FILLED WITH CLASS PP-1* CONCRETE TO THE ELEVATION OF THE SURFACE OF THE EXISTING BASE COURSE OR THE BINDER COURSE.
- * UNLESS OTHERWISE SPECIFIED IN THE PLANS.

THE PROCEDURE EXPLAINED ABOVE SHALL CONFORM TO THE APPLICABLE PORTIONS OF SECTIONS 353, 406, 602, AND 603 OF THE STANDARD SPECIFICATIONS EXCEPT THAT THE CONTRACTOR SHALL ADJUST THE STRUCTURES TO THE FINISHED PAVEMENT ELEVATION NO MORE THAN 5 CALENDAR DAYS PRIOR TO PLACEMENT OF THE FINAL LIFT OF SURFACE UNLESS APPROVED BY THE ENGINEER.

LEGEND

- ① SUB-BASE GRANULAR MATERIAL
- ② EXISTING PAVEMENT
- ③ 36 (900) DIAMETER METAL PLATE
- ④ PROPOSED CRUSHED STONE AND HMA SURFACE MIX
- ⑤ EXISTING STRUCTURE
- ⑥ FRAME AND LID (SEE NOTES)
- ⑦ CLASS PP-1* CONCRETE
- ⑧ PROPOSED HMA SURFACE COURSE
- ⑨ PROPOSED HMA BINDER COURSE

LOCATION OF STRUCTURES:

THE CONTRACTOR WILL BE REQUIRED TO KEEP A RECORD OF THE LOCATIONS OF THE BURIED STRUCTURES ACCORDING TO THE STATION AND DISTANCE LEFT OR RIGHT OF THE CENTERLINE OF PAVEMENT. UPON COMPLETION OF THE WORK, THE CONTRACTOR WILL DELIVER THE RECORD TO THE ENGINEER.

BASIS OF PAYMENT:

REMOVING FRAMES AND LIDS ON DRAINAGE AND UTILITY STRUCTURES IN THE PAVEMENT PRIOR TO MILLING, AND ADJUSTING TO FINAL GRADE PRIOR TO PLACING THE SURFACE COURSE, WILL BE PAID FOR AT THE CONTRACT UNIT PRICE EACH FOR "FRAMES AND LIDS TO BE ADJUSTED (SPECIAL)."

THIS WORK WILL NOT BE PAID FOR WHEN DRAINAGE AND UTILITY STRUCTURES ARE SPECIFIED FOR PAYMENT AS STRUCTURE RECONSTRUCTION.

NEW FRAMES AND LIDS, WHEN SPECIFIED, WILL BE PAID FOR SEPARATELY.

NOTES:

EXISTING BROKEN FRAMES AND LIDS SHALL BE REMOVED AND DISPOSED OF BY THE CONTRACTOR AND SHALL BE REPLACED AS DIRECTED BY THE ENGINEER. REPLACEMENT FRAMES AND LIDS WILL BE PAID FOR IN ACCORDANCE WITH ARTICLE 109.04 OF THE STANDARD SPECIFICATIONS UNLESS A SEPARATE PAY ITEM HAS BEEN PROVIDED.

IF THE EXISTING LIDS ARE OPEN, THE FRAME WILL BE ADJUSTED TO THE ELEVATION OF THE MILLED PAVEMENT SURFACE PRIOR TO THE MILLING OPERATION. THE FRAME WILL NOT BE REMOVED AND COVERED BY THE METAL PLATE.

CITY OF CHICAGO CASTINGS ARE THE PROPERTY OF THE CITY AND THE CONTRACTOR SHALL NOTIFY THE CITY FOR REMOVAL AND DISPOSITION OF THE CASTINGS.

THE METAL PLATE USED TO COVER THE STRUCTURE SHALL REMAIN THE PROPERTY OF THE CONTRACTOR.

WHEN STRUCTURES ARE TO BE ADJUSTED OR RECONSTRUCTED, THE LOWERING AND RAISING OF THE FRAMES AND LIDS WILL NOT BE PAID FOR SEPARATELY BUT WILL BE INCLUDED IN THE COST OF THE CORRESPONDING PAY ITEM.

DETAILS FOR FRAMES AND LIDS ADJUSTMENT WITH MILLING

ALL DIMENSIONS ARE IN INCHES (MILLIMETERS) UNLESS OTHERWISE SHOWN

REVISIONS	
NAME	DATE
R. SHAH	10/25/94
R. SHAH	01/30/95
R. SHAH	03/10/95
A. ABBAS	03/21/97
R. WIEDEMAN	05/14/04
R. BORO	01/01/07
R. BORO	03/09/11
R. BORO	12/06/11

ILLINOIS DEPARTMENT OF TRANSPORTATION
**DETAILS FOR
FRAMES AND LIDS ADJUSTMENT
WITH MILLING**

SCALE: VERT. NONE
HORIZ. DRAWN BY
CHECKED BY

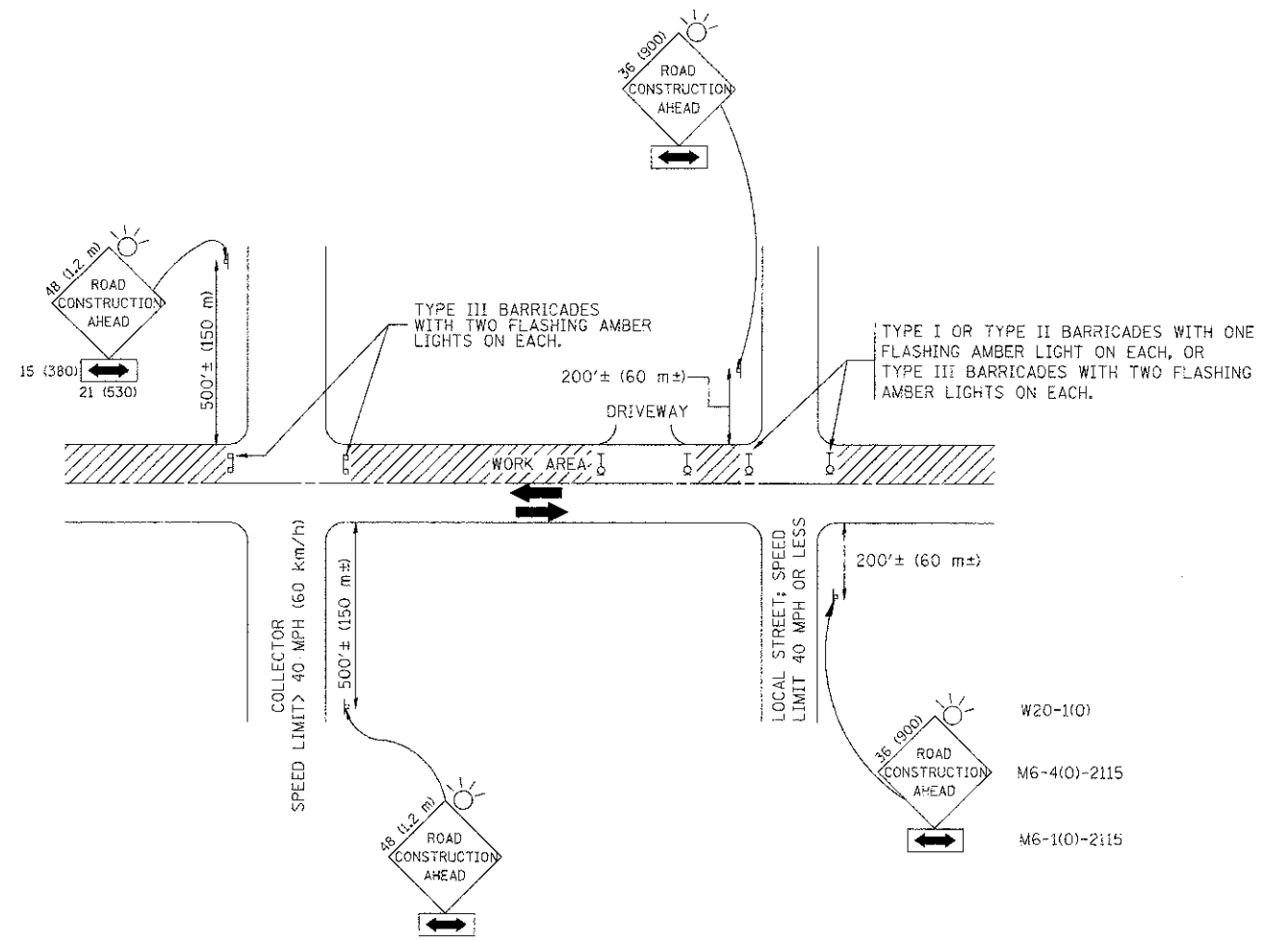
FILE NAME = 12892-DTLS-01 - BD-8	USER NAME = ggghlanabt	DESIGNED - R. SHAH	REVISED - R. WIEDEMAN 05/14/04
		DRAWN -	REVISED - R. BORO 01/01/07
		CHECKED -	REVISED - R. BORO 03/09/11
		DATE - 10-25-94	REVISED - R. BORO 12/06/11

**STATE OF ILLINOIS
DEPARTMENT OF TRANSPORTATION**

**DETAILS FOR
FRAMES AND LIDS ADJUSTMENT WITH MILLING**

SCALE: NONE SHEET NO. 8 OF 11 SHEETS STA. TO STA.

F.A.J. RTE.	SECTION	COUNTY	TOTAL SHEETS	SHEET NO.
3598	12-00152-00-RS	COOK	11	8
BD600-03 (BD-8)		CONTRACT NO. 63823		
FED. ROAD DIST. NO. 1 ILLINOIS FED. AID PROJECT M-4003(118)				



TRAFFIC CONTROL AND PROTECTION FOR SIDE ROADS, INTERSECTIONS, AND DRIVEWAYS

NOTES:

- A. FOR NO LANE RESTRICTION ON THE SIDE ROAD OR DRIVEWAYS**
- SIDE ROAD WITH A SPEED LIMIT OF 40 MPH (60 km/h) OR LESS AS SHOWN ON THE DRAWING AND AS DIRECTED BY THE ENGINEER:
 - ONE **ROAD CONSTRUCTION AHEAD** SIGN 36 x 36 (900x900) WITH A FLASHER AND FLAG MOUNTED ON IT APPROXIMATELY 200' (60 m) IN ADVANCE OF THE MAIN ROUTE.
 - THE CLOSED PORTION OF THE MAIN ROUTE SHALL BE PROTECTED BY BLOCKING WITH TYPE I, TYPE II OR TYPE III BARRICADES, 1/3 OF THE CROSS SECTION OF THE CLOSED PORTION.
 - SIDE ROAD WITH A SPEED LIMIT GREATER THAN 40 MPH (60 km/h) AS SHOWN ON THE DRAWING AND AS DIRECTED BY THE ENGINEER:
 - ONE **ROAD CONSTRUCTION AHEAD** SIGN 48 x 48 (1.2 m x 1.2 m) WITH A FLASHER MOUNTED ON IT APPROXIMATELY 500' (150 m) IN ADVANCE OF THE MAIN ROUTE.
 - THE CLOSED PORTION OF THE MAIN ROUTE SHALL BE PROTECTED BY BLOCKING WITH TYPE III BARRICADES, 1/2 OF THE CROSS SECTION OF THE CLOSED PORTION.
 - WHEN THE SIDE ROAD LIES BETWEEN THE BEGINNING OF THE MAINLINE SIGNING AND THE WORK ZONE, A SINGLE HEADED ARROW (M6-1) SHALL BE USED IN LIEU OF THE DOUBLE HEADED ARROW (M6-4).
- B. FOR A LANE CLOSURE ON A SIDE ROAD OR DRIVEWAY:**
- USE APPLICABLE PORTIONS OF THE TYPICAL APPLICATION OF TRAFFIC CONTROL DEVICES (STD. 701501, STD. 701606 OR THE APPROPRIATE STANDARD). THE SPACING OF SIGNS AND BARRICADES SHALL BE ADJUSTED FOR FIELD CONDITIONS AS DIRECTED BY THE ENGINEER. THE DIRECTIONAL ARROW SHALL BE COVERED OR REMOVED WHEN NO LONGER CONSISTENT WITH THE SIDE ROAD LANE CLOSURE.
- C. ADVANCE WARNING SIGNS ARE TO BE OMITTED ON DRIVEWAY UNLESS OTHERWISE NOTED.**
- D. THE TRAFFIC CONTROL AND PROTECTION FOR SIDE ROADS, INTERSECTIONS, AND DRIVEWAYS SHALL BE INCIDENTAL TO THE COST OF SPECIFIED TRAFFIC CONTROL STANDARDS OR ITEMS.**

All dimensions are in millimeters (inches) unless otherwise shown.

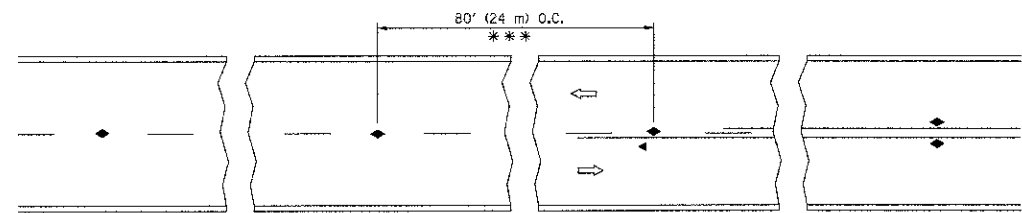
FILE NAME = 12692-DTIS-01 - TC-10	USER NAME = gaglianoht	DESIGNED - LHA	REVISED - J. OBERLE 10-18-95
		DRAWN -	REVISED - A. HOUSEH 03-06-96
	PLOT SCALE = 50.0000 / / IN.	CHECKED -	REVISED - A. HOUSEH 10-15-96
	PLOT DATE = 1/4/2008	DATE - 06-89	REVISED - T. RAMMACHER 01-06-00

STATE OF ILLINOIS
DEPARTMENT OF TRANSPORTATION

TRAFFIC CONTROL AND PROTECTION FOR
SIDE ROADS, INTERSECTIONS, AND DRIVEWAYS

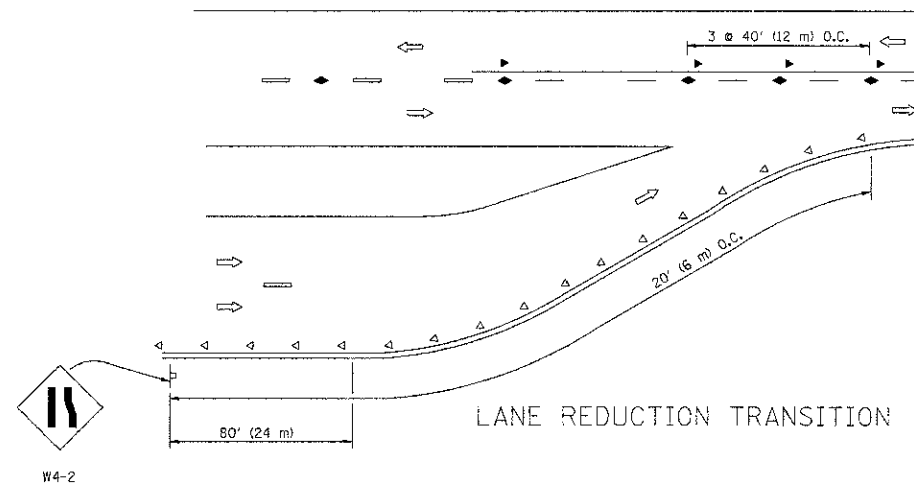
SCALE: NONE SHEET NO.91 OF 11 SHEETS STA. TO STA.

F.A.U. RTE.	SECTION	COUNTY	TOTAL SHEETS	SHEET NO.
359B	12-00162-#RS	COOK	11	9
TC-10			CONTRACT NO. 63823	
FED. ROAD DIST. NO. 1 ILLINOIS FED. AID PROJECT# 4003(118)				

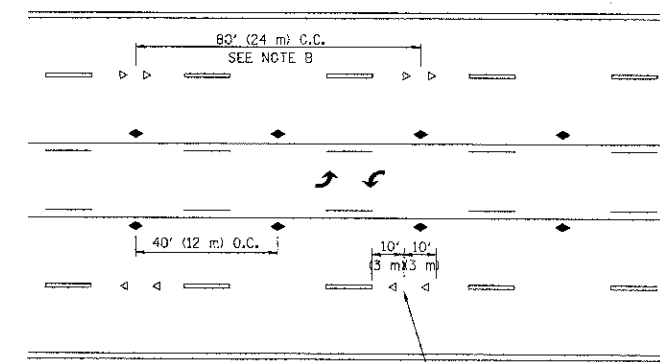


*** REDUCE TO 40' (12 m) O.C. ON CURVES WITH POSTED OR ADVISORY SPEED 45 M.P.H. (70 km/h) OR LESS.

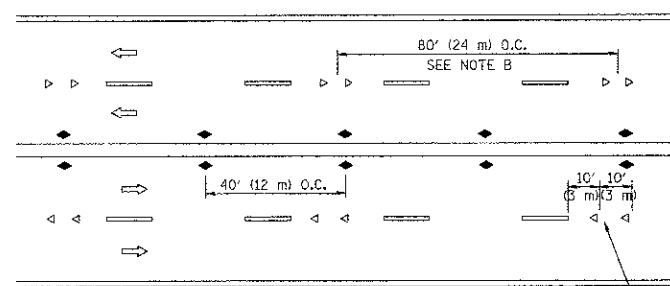
TWO-LANE/TWO-WAY



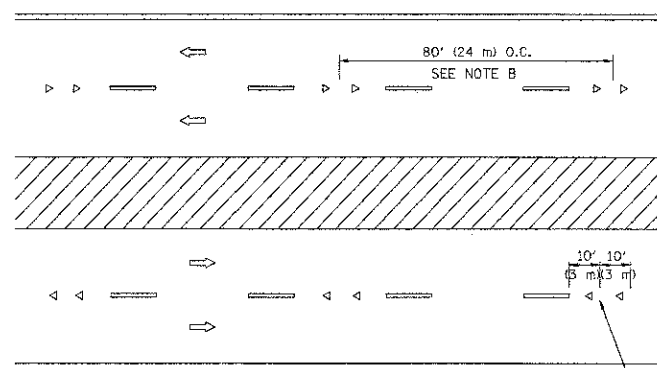
LANE REDUCTION TRANSITION



TWO-WAY LEFT TURN



MULTI-LANE/UNDIVIDED



MULTI-LANE/DIVIDED

GENERAL NOTES

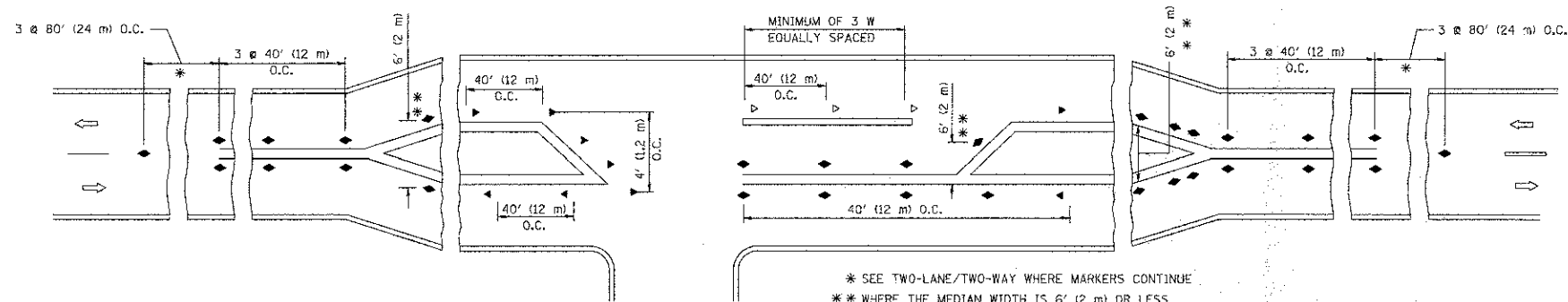
1. MARKERS USED WITH DASHED LINES SHALL BE CENTERED IN THE GAP BETWEEN SEGMENTS.
2. MARKERS USED ADJACENT TO SOLID LINES SHALL BE OFFSET 2 TO 3 (50 TO 75) TOWARD TRAFFIC AS SHOWN.
3. MARKERS THROUGH TANGENTS LESS THAN 500' (150 m) IN LENGTH BETWEEN CURVES SHALL BE INSTALLED AT THE LESSER OF THE TWO CURVE SPACINGS.

SYMBOLS

- YELLOW STRIPE
- WHITE STRIPE
- ◀ ONE-WAY AMBER MARKER
- ◁ ONE-WAY CRYSTAL MARKER (W/O)
- ◆ TWO-WAY AMBER MARKER

LANE MARKER NOTES

- A. USE DOUBLE LANE LINE MARKERS SPACED AS SHOWN.
- B. REDUCE TO 40' (12 m) O.C. ON CURVES WHERE ADVISORY SPEEDS ARE 10 M.P.H. (20 km/h) LOWER THAN POSTED SPEEDS.



LEFT TURN

* SEE TWO-LANE/TWO-WAY WHERE MARKERS CONTINUE
 ** WHERE THE MEDIAN WIDTH IS 6' (2 m) OR LESS USE TWO-WAY MARKERS.

All dimensions are in inches (millimeters) unless otherwise shown.

FILE NAME = 12592-DTLS-01 - TC-11

USER NAME = drivskoegn

DESIGNED -

REVISED - T. RAMMACHER 09-19-94

PLLOT SCALE = 50,000' / IN.

DRAWN -

REVISED - T. RAMMACHER 03-12-99

PLLOT DATE = 9/9/2009

CHECKED -

REVISED - T. RAMMACHER 01-06-00

DATE -

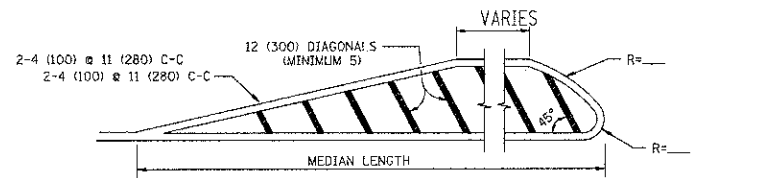
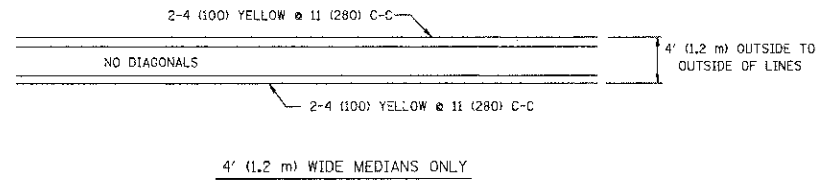
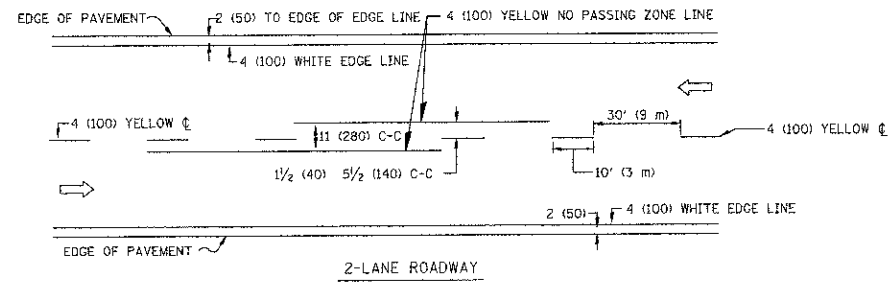
REVISED - C. JUCIUS 09-09-09

STATE OF ILLINOIS
 DEPARTMENT OF TRANSPORTATION

TYPICAL APPLICATIONS
 RAISED REFLECTIVE PAVEMENT MARKERS (SNOW-PLOW RESISTANT)

SCALE: NONE SHEET NO. 10 OF 11 SHEETS STA. TO STA.

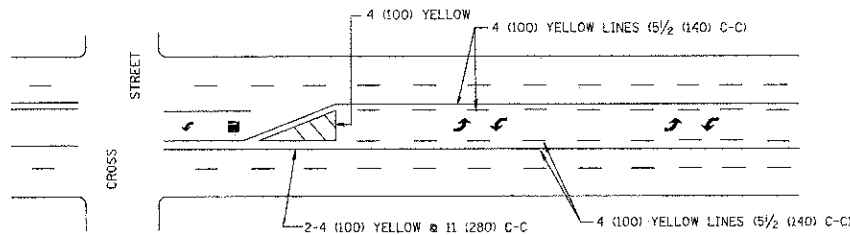
F.A.U. RTE.	SECTION	COUNTY	TOTAL SHEETS	SHEET NO.
3596	12-00152-RS	COOK	11	10
TC-11			CONTRACT NO. 63823	
FED. ROAD DIST. NO. 1 ILLINOIS FED. AID PROJECT M-4003(118)				



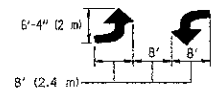
FOR MEDIAN LENGTHS WHERE DIAGONAL SPACING CANNOT BE ATTAINED, USE 5 (FIVE) EQUALLY SPACED DIAGONAL LINES.

DIAGONAL LINE SPACING: 50' (15 m) C-C (LESS THAN 30MPH (50 km/h))
75' (25 m) C-C 30MPH (50 km/h) TO 45MPH (70 km/h)
150' (45 m) C-C (MORE THAN 45MPH (70 km/h))

MEDIANS OVER 4' (1.2 m) WIDE

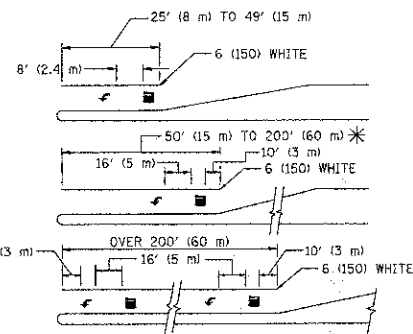


A MINIMUM OF TWO PAIRS OF TURN ARROWS SHALL BE USED, WHITE IN COLOR. ADDITIONAL PAIRS SHALL BE PLACED AT 200' (60 m) TO 300' (90 m) INTERVALS.



MEDIAN WITH TWO-WAY LEFT TURN LANE

TYPICAL PAINTED MEDIAN MARKING

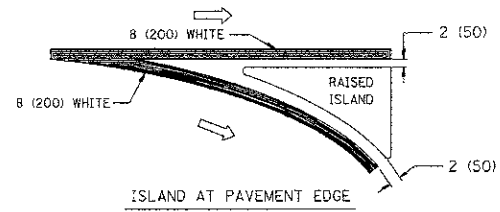
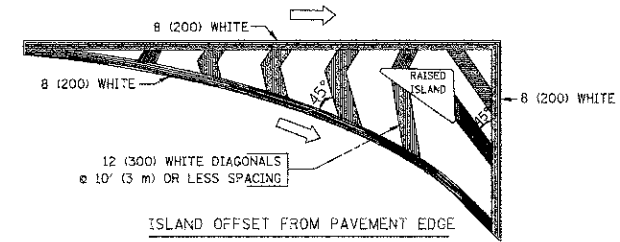


FULL SIZE LETTERS 8' (2.4 m) AND ARROWS SHALL BE USED.
AREA = 15.6 SQ. FT. (1.5 m²) ONLY AREA = 20.8 SQ. FT. (1.9 m²)

* TURN LANES IN EXCESS OF 400' (120 m) IN LENGTH MAY HAVE AN ADDITIONAL SET OF ARROW - "ONLY" INSTALLED MIDWAY BETWEEN THE OTHER TWO SETS OF ARROW - "ONLY".

TYPICAL LEFT (OR RIGHT) TURN LANE

TYPICAL TURN LANE MARKING

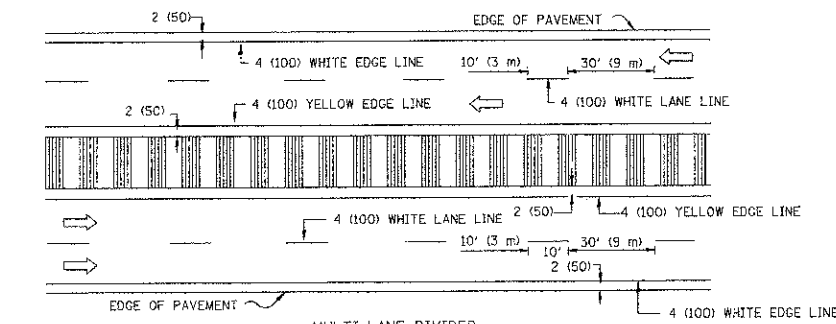
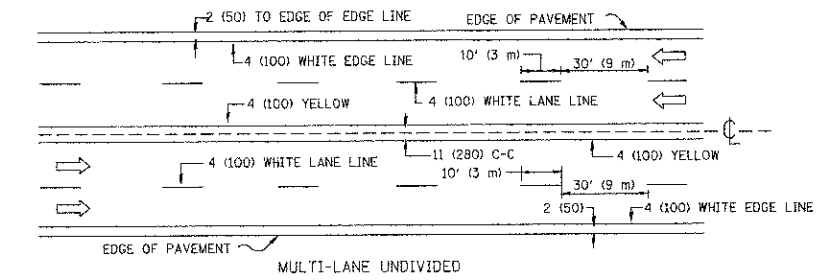


TYPICAL ISLAND MARKING

TYPE OF MARKING	WIDTH OF LINE	PATTERN	COLOR	SPACING / REMARKS
CENTERLINE ON 2 LANE PAVEMENT	4 (100)	SKIP-DASH	YELLOW	10' (3 m) LINE WITH 30' (9 m) SPACE
CENTERLINE ON MULTI-LANE UNDIVIDED PAVEMENT	2 @ 4 (100)	SOLID	YELLOW	11 (280) C-C
NO PASSING ZONE LINES: FOR ONE DIRECTION	4 (100)	SOLID	YELLOW	5/2 (140) C-C FROM SKIP-DASH CENTERLINE
FOR BOTH DIRECTIONS	2 @ 4 (100)	SOLID	YELLOW	11 (280) C-C OMIT SKIP-DASH CENTERLINE BETWEEN
LANE LINES	4 (100) 5 (125) ON FREEWAYS	SKIP-DASH SKIP-DASH	WHITE	10' (3 m) LINE WITH 30' (9 m) SPACE
DOTTED LINES (EXTENSIONS OF CENTER, LANE OR TURN LANE MARKINGS)	SAME AS LINE BEING EXTENDED	SKIP-DASH	SAME AS LINE BEING EXTENDED	2' (600) LINE WITH 6' (1.8 m) SPACE
EDGE LINES	4 (100)	SOLID	YELLOW-LEFT WHITE-RIGHT	OUTLINE MOUNTABLE MEDIANS IN YELLOW; EDGE LINES ARE NOT USED NEXT TO BARRIER CURB
TURN LANE MARKINGS	6 (150) LINE; FULL SIZE LETTERS & SYMBOLS (8' (2.4m))	SOLID	WHITE	SEE TYPICAL TURN LANE MARKING DETAIL
TWO WAY LEFT TURN MARKING	2 @ 4 (100) EACH DIRECTION	SKIP-DASH AND SOLID	YELLOW	10' (3 m) LINE WITH 30' (9 m) SPACE FOR SKIP-DASH; 5/2 (140) C-C BETWEEN SOLID LINE AND SKIP-DASH LINE
	8' (2.4m) LEFT ARROW	IN PAIRS	WHITE	SEE TYPICAL TWO-WAY LEFT TURN MARKING DETAIL
CROSSWALK LINES (PEDESTRIAN)	2 @ 6 (150)	SOLID	WHITE	NOT LESS THAN 6' (1.8 m) APART
A. DIAGONALS (BIKE & EQUESTRIAN)	12 (300) @ 45°	SOLID	WHITE	2' (600) APART
B. LONGITUDINAL BARS (SCHOOL)	12 (300) @ 90°	SOLID	WHITE	2' (600) APART
				SEE TYPICAL CROSSWALK MARKING DETAILS.
STOP LINES	24 (600)	SOLID	WHITE	PLACE 4' (1.2 m) IN ADVANCE OF AND PARALLEL TO CROSSWALK, IF PRESENT. OTHERWISE, PLACE AT DESIRED STOPPING POINT, PARALLEL TO CROSSROAD CENTERLINE, WHERE POSSIBLE
PAINTED MEDIANS	2 @ 4 (100) WITH 12 (300) DIAGONALS @ 45°	SOLID	YELLOW: TWO WAY TRAFFIC WHITE: ONE WAY TRAFFIC	11 (280) C-C FOR THE DOUBLE LINE SEE TYPICAL PAINTED MEDIAN MARKING.
GORE MARKING AND CHANNELIZING LINES	8 (200) WITH 12 (300) DIAGONALS @ 45°	SOLID	WHITE	DIAGONALS: 15' (4.5 m) C-C (LESS THAN 30MPH (50 km/h)) 20' (6 m) C-C 30MPH (50 km/h) TO 45MPH (70 km/h) 30' (9 m) C-C (OVER 45MPH (70 km/h))
RAILROAD CROSSING	24 (600) TRANSVERSE LINES; "RR" IS 6' (1.8 m) LETTERS; 16 (400) LINE FOR "X"	SOLID	WHITE	SEE STATE STANDARD 780001 AREA OF: "R"=3.6 SQ. FT. (0.33 m ²) EACH "X"=54.0 SQ. FT. (5.0 m ²)
SHOULDER DIAGONALS	12 (300) @ 45°	SOLID	WHITE - RIGHT YELLOW - LEFT	50' (15 m) C-C (LESS THAN 30MPH (50 km/h)) 75' (25 m) C-C (30 MPH (50 km/h) TO 45MPH (70 km/h)) 150' (45 m) C-C (OVER 45MPH (70 km/h))

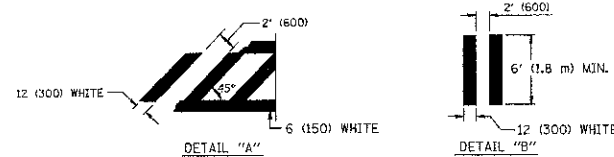
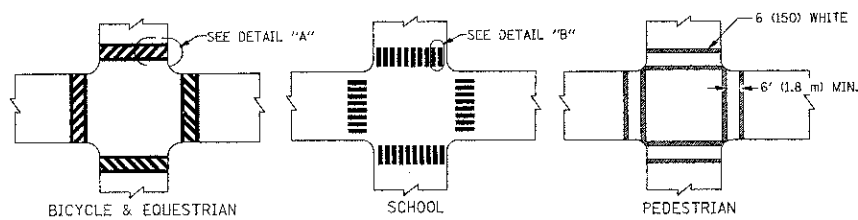
FOR FURTHER DETAILS ON PAVEMENT MARKING REFER TO STANDARD SPECIFICATIONS FOR ROAD AND BRIDGE CONSTRUCTION AND STATE STANDARD 780001.

All dimensions are in inches (millimeters) unless otherwise shown.



NOTE: MEDIANS WITH BARRIER CURB DO NOT REQUIRE AN EDGE LINE

TYPICAL LANE AND EDGE LINE MARKING



TYPICAL CROSSWALK MARKING

FILE NAME = 12992-DTLS-01 - TC-13	USER NAME = d-lvaksagn	DESIGNED - EVERS	REVISED - T. RAMMACHER 10-27-94
		DRAWN -	REVISED - C. JUCCIUS 09-09-09
		CHECKED -	REVISED -
PLOT SCALE = 50,000' / IN.		DATE - 03-19-90	REVISED -
PLOT DATE = 9/9/2009			

STATE OF ILLINOIS
DEPARTMENT OF TRANSPORTATION

DISTRICT ONE		F.A.U. RTE. =	SECTION	COUNTY	TOTAL SHEETS	SHEET NO.
TYPICAL PAVEMENT MARKINGS		3598	12-00182-09-RS	COOK	11	11
SCALE: NONE		SHEET NO. 11 OF 11 SHEETS		STA.	TO STA.	
		TC-13		CONTRACT NO. 63823		
		FED. ROAD DIST. NO. 1 ILLINOIS FED. AID PROJECT M-4003(118)				