

STATE OF ILLINOIS
DEPARTMENT OF TRANSPORTATION
DIVISION OF HIGHWAYS

PLANS FOR PROPOSED
FEDERAL AID HIGHWAY

FAU 2566 (SCHMALE ROAD)
FULLERTON AVENUE TO BLOOMINGDALE COURT
TRAFFIC SIGNAL INTERCONNECT
SECTION 11-00279-03-TL
PROJECT CMM-4003 (108)
DuPAGE COUNTY

C-91-085-13

FAU RTE.	SECTION	COUNTY	TOTAL SHEETS	SHEET NO.
2566	11-00279-03-TL	DUPAGE	19	1
		ILLINOIS	CONTRACT NO. 63826	



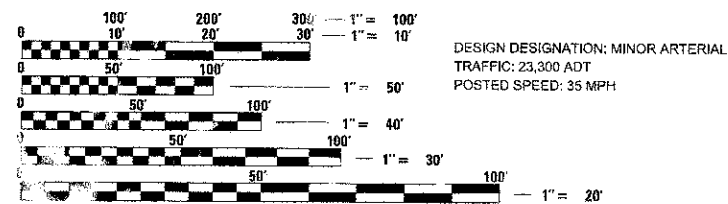
INDEX OF SHEETS

1. TITLE SHEET
2. GENERAL NOTES
3. SUMMARY OF QUANTITIES
4. TRAFFIC SIGNAL LEGEND
5. TRAFFIC SIGNAL MODERNIZATION PLAN-SCHMALE ROAD AT FULLERTON AVENUE
6. SCHEDULE OF QUANTITIES, CABLE PLAN, PHASE DESIGNATION DIAGRAM, EMERGENCY VEHICLE PREEMPTION SEQUENCE-SCHMALE ROAD AT FULLERTON AVENUE
7. TRAFFIC SIGNAL MODERNIZATION PLAN-SCHMALE ROAD AT LIES ROAD
8. SCHEDULE OF QUANTITIES, CABLE PLAN, PHASE DESIGNATION DIAGRAM, EMERGENCY VEHICLE PREEMPTION SEQUENCE-SCHMALE ROAD AT LIES ROAD
9. TRAFFIC SIGNAL MODERNIZATION PLAN-SCHMALE ROAD AT BLOOMINGDALE COURT
10. SCHEDULE OF QUANTITIES, CABLE PLAN, PHASE DESIGNATION DIAGRAM, EMERGENCY VEHICLE PREEMPTION SEQUENCE-SCHMALE ROAD AT BLOOMINGTON COURT
- 11-13. INTERCONNECT PLAN
14. INTERCONNECT SCHEMATIC
- 15-19. DISTRICT ONE TRAFFIC SIGNAL DETAILS

HIGHWAY STANDARDS

000001-06	001006	424001-07	606001-05
606306-03	701006-04	701011-03	701301-04
701421-05	701501-06	701601-08	701606-08
701701-08	701801-05	701901-02	720001-01
720006-03	814001-02	814006-02	857001-01
862001-01	873001-02	877001-05	878001-09
880001-01	880006-01	886001-01	TS-05

DISTRICT ONE TRAFFIC SIGNAL DETAILS



FULL SIZE PLANS HAVE BEEN PREPARED USING STANDARD ENGINEERING SCALES. REDUCED SIZED PLANS WILL NOT CONFORM TO STANDARD SCALES. IN MAKING MEASUREMENTS ON REDUCED PLANS, THE ABOVE SCALES MAY BE USED.

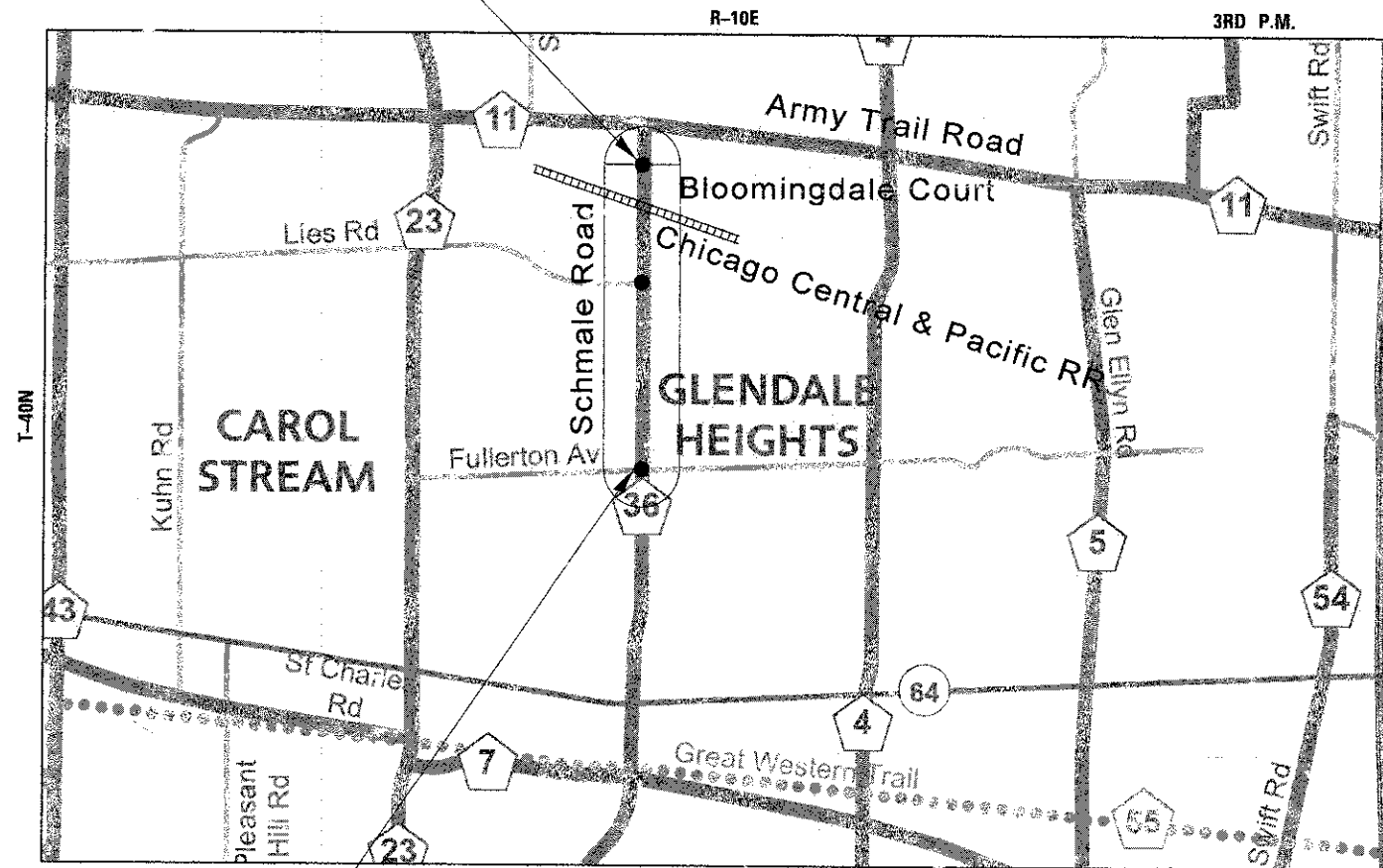
J.U.L.I.E.
JOINT UTILITY LOCATION INFORMATION FOR EXCAVATION
1-800-892-0123
OR 811

PROJECT ENGINEER: THOMAS HARDY
PROJECT MANAGER: DAVE ZIESEMER

CONTRACT NO. 63826

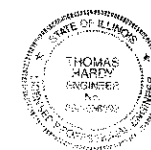
PROJECT LOCATED IN THE VILLAGE OF GLENDALE HEIGHTS

END PROJECT STA 143+00



BEGIN PROJECT STA 67+00

GROSS LENGTH = 7600.00 FT. = 1.44 MILE
NET LENGTH = 7600.00 FT. = 1.44 MILE



Thomas Hardy
3/22/2013

STATE OF ILLINOIS
DEPARTMENT OF TRANSPORTATION
DIVISION OF HIGHWAYS

APPROVED March 22nd 2013
Christopher Snyder
DUPAGE COUNTY DIVISION OF TRANSPORTATION, COUNTY ENGINEER

PASSED April 14 2013
C. Holt *C.S. Holt*
DISTRICT ONE ENGINEER OF LOCAL ROADS & STREETS

RELEASING FOR BID
BASED ON LIMITED REVIEW
April 12 2013
John Fetzmaier
DEPUTY DIRECTOR OF HIGHWAYS, REGION ENGINEER

PRINTED BY THE AUTHORITY
OF THE STATE OF ILLINOIS

PROGRAM & OFFICE ENGINEER: CHARLES F. RIDDLE, P.E. (847) 708-4406, SCHAUMBURG, IL