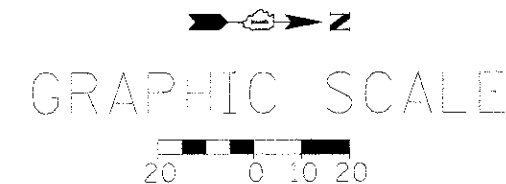


CONSTRUCTION NOTES:

- ① REMOVE AND REPLACE EXISTING CONTROLLER AND CABINET AND INDUCTIVE LOOP DETECTORS.
- ② REMOVE EXISTING SERVICE INSTALLATION AND INSTALL NEW SERVICE INSTALLATION AND GROUND CABLE.
- ③ REMOVE EXISTING SIGNAL HEADS AND REPLACE WITH NEW LED SIGNAL HEADS.
- ④ REMOVE EXISTING PEDESTRIAN SIGNAL HEADS AND PUSH BUTTONS, REPLACE WITH NEW LED COUNTDOWN PEDESTRIAN SIGNAL HEADS AND PUSH BUTTONS, AND INSTALL NEW NUMBER 14 2C CABLE FOR ADDED PUSH BUTTONS AT SOUTHWEST AND SOUTHEAST CORNERS.
- ⑤ INSTALL UNINTERRUPTED POWER SUPPLY SYSTEM (UPS)

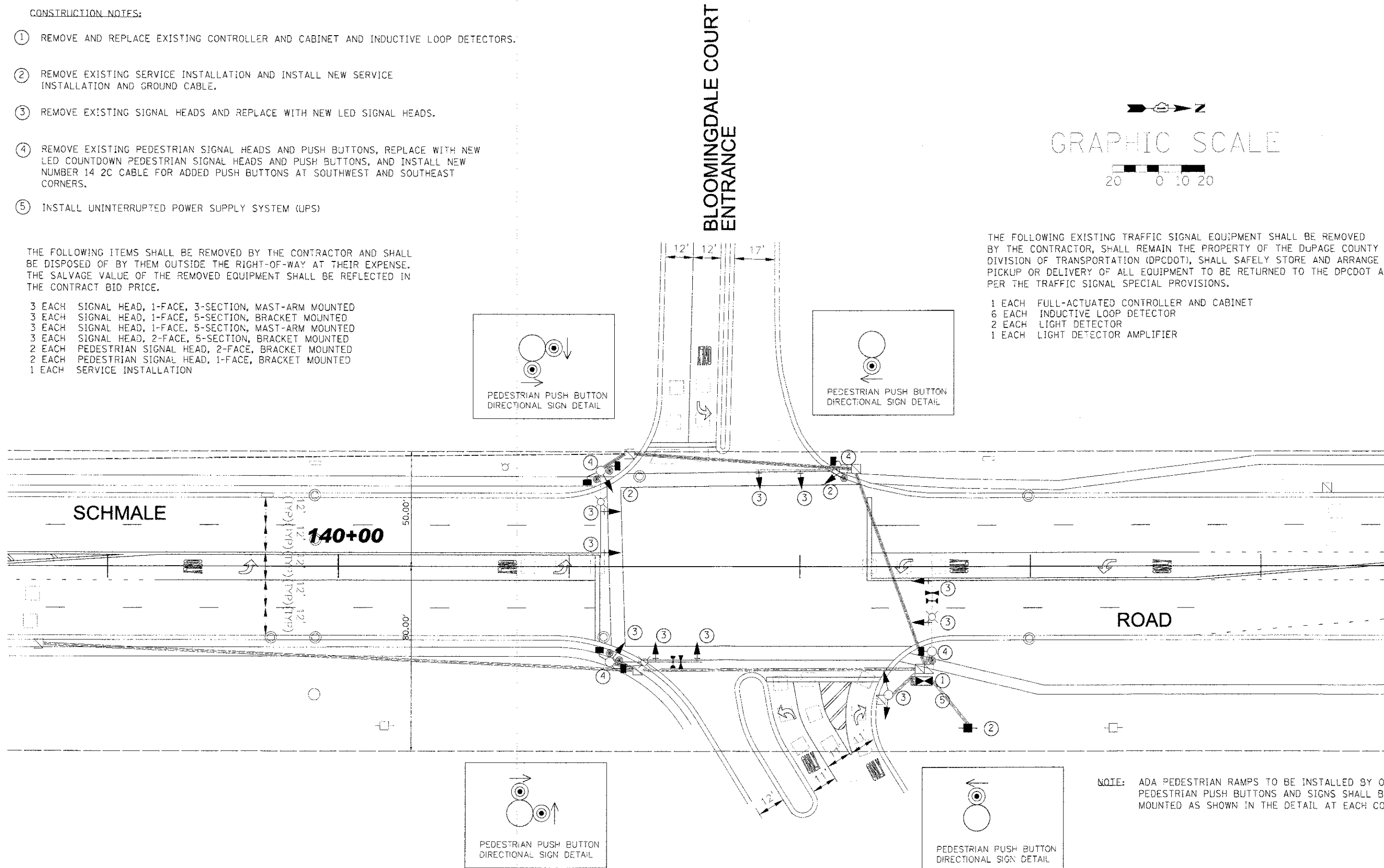
THE FOLLOWING ITEMS SHALL BE REMOVED BY THE CONTRACTOR AND SHALL BE DISPOSED OF BY THEM OUTSIDE THE RIGHT-OF-WAY AT THEIR EXPENSE. THE SALVAGE VALUE OF THE REMOVED EQUIPMENT SHALL BE REFLECTED IN THE CONTRACT BID PRICE.

- 3 EACH SIGNAL HEAD, 1-FACE, 3-SECTION, MAST-ARM MOUNTED
- 3 EACH SIGNAL HEAD, 1-FACE, 5-SECTION, BRACKET MOUNTED
- 3 EACH SIGNAL HEAD, 1-FACE, 5-SECTION, MAST-ARM MOUNTED
- 3 EACH SIGNAL HEAD, 2-FACE, 5-SECTION, BRACKET MOUNTED
- 2 EACH PEDESTRIAN SIGNAL HEAD, 2-FACE, BRACKET MOUNTED
- 2 EACH PEDESTRIAN SIGNAL HEAD, 1-FACE, BRACKET MOUNTED
- 1 EACH SERVICE INSTALLATION



THE FOLLOWING EXISTING TRAFFIC SIGNAL EQUIPMENT SHALL BE REMOVED BY THE CONTRACTOR, SHALL REMAIN THE PROPERTY OF THE DUPAGE COUNTY DIVISION OF TRANSPORTATION (DPCDOT), SHALL SAFELY STORE AND ARRANGE FOR PICKUP OR DELIVERY OF ALL EQUIPMENT TO BE RETURNED TO THE DPCDOT AS PER THE TRAFFIC SIGNAL SPECIAL PROVISIONS.

- 1 EACH FULL-ACTUATED CONTROLLER AND CABINET
- 6 EACH INDUCTIVE LOOP DETECTOR
- 2 EACH LIGHT DETECTOR
- 1 EACH LIGHT DETECTOR AMPLIFIER



NOTE: ADA PEDESTRIAN RAMPS TO BE INSTALLED BY OTHERS. PEDESTRIAN PUSH BUTTONS AND SIGNS SHALL BE MOUNTED AS SHOWN IN THE DETAIL AT EACH CORNER.

FILE NAME: PLANSHEET.dwg	USER NAME: fuzkm	DESIGNED: TH	REVISED: -	STATE OF ILLINOIS DEPARTMENT OF TRANSPORTATION	TRAFFIC SIGNAL MODERNIZATION PLAN SCHMALE ROAD AT BLOOMINGDALE COURT ENTRANCE		F.A.U. RTE: 256E	SECTION: 11-00279-03-TL	COUNTY: DUPAGE	TOTAL SHEETS: 19	SHEET NO.: 9
	PLST SCALE: 20.000 1/4" = 1'	CHECKED: DAZ	DATE: 10/2/12		REVISED: -	SCALE: 1"=20'	SHEET OF SHEETS: STA. TO STA.	ILLINOIS FED. AID PROJECT CONTRACT NO. 63826			