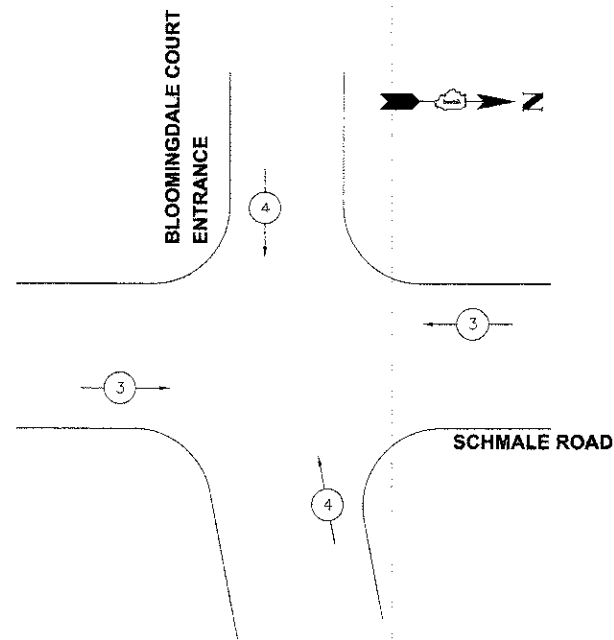
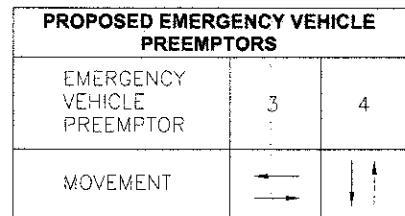


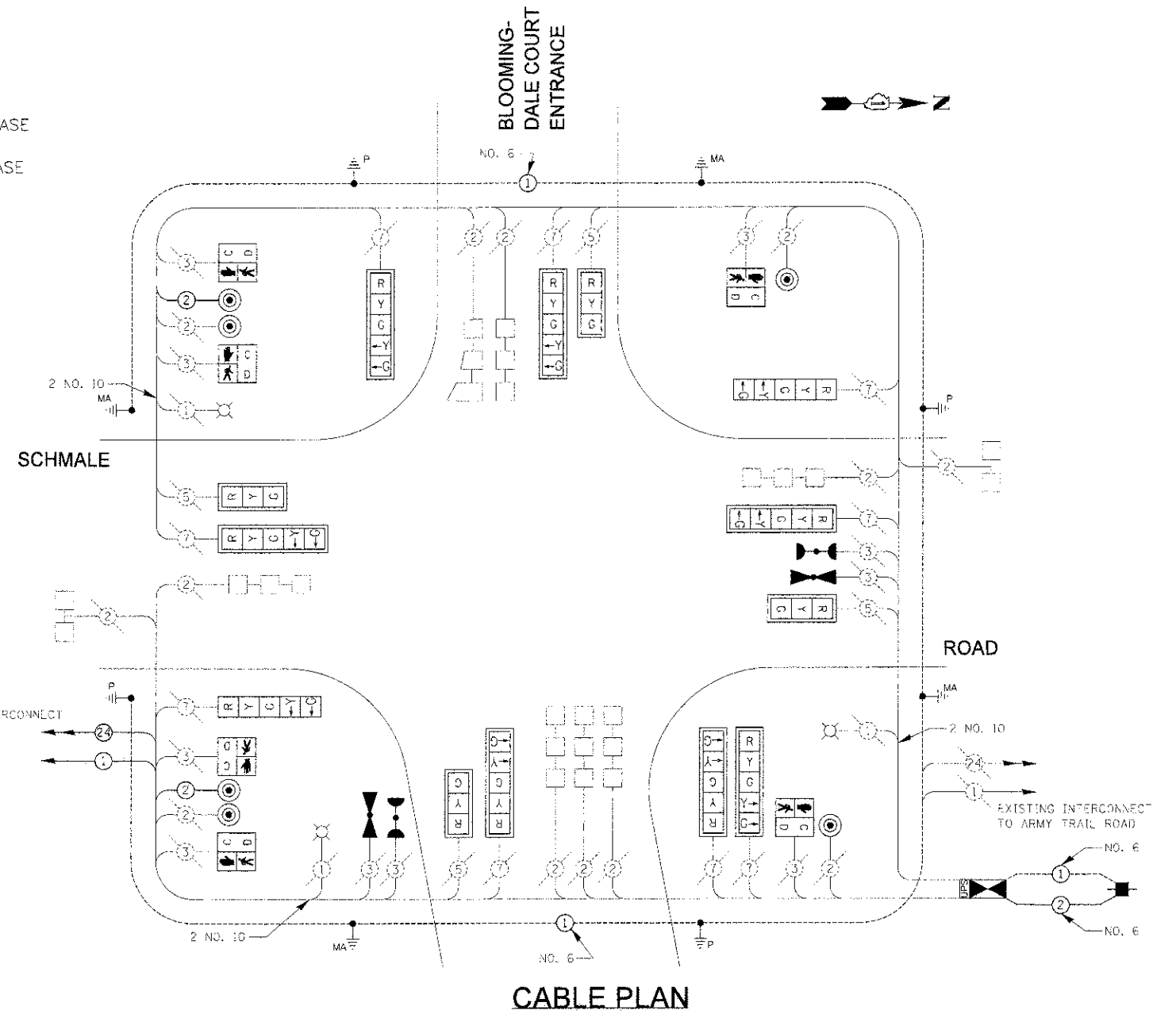
EXISTING AND PROPOSED PHASE DESIGNATION DIAGRAM



EXISTING AND PROPOSED EMERGENCY VEHICLE PREEMPTION SEQUENCE



**LEGEND**  
 DUAL ENTRY PHASE  
 PEDESTRIAN PHASE



CABLE PLAN

SCHEDULE OF QUANTITIES

PAY CODE NUMBER	PAY ITEM	UNIT	TOTAL
67100100	MOBILIZATION	L SUM	0.2
70100310	TRAFFIC CONTROL AND PROTECTION, STANDARD 701421	L SUM	0.2
70102630	TRAFFIC CONTROL AND PROTECTION, STANDARD 701601	L SUM	0.2
70102625	TRAFFIC CONTROL AND PROTECTION, STANDARD 701606	L SUM	0.2
70102635	TRAFFIC CONTROL AND PROTECTION, STANDARD 701701	L SUM	0.2
70102640	TRAFFIC CONTROL AND PROTECTION, STANDARD 701801	L SUM	0.2
80500020	SERVICE INSTALLATION - POLE MOUNTED	EACH	1
85000200	MAINTENANCE OF EXISTING TRAFFIC SIGNAL INSTALLATION	EACH	1
85700200	FULL-ACTUATED CONTROLLER AND TYPE IV CABINET	EACH	1
86200200	UNINTERRUPTIBLE POWER SUPPLY, STANDARD	EACH	1
87300010	GROUNDING EXISTING HANDHOLE FRAME AND COVER	EACH	6
87301215	ELECTRIC CABLE IN CONDUIT, SIGNAL NO. 14 2C	FOOT	441
87301900	ELECTRIC CABLE IN CONDUIT, EQUIPMENT GROUNDING CONDUCTOR, NO. 6 1C	FOOT	463
87900200	DRILL EXISTING HANDHOLE	EACH	1
88030020	SIGNAL HEAD, LED, 1-FACE, 3-SECTION, MAST-ARM MOUNTED	EACH	3
88030100	SIGNAL HEAD, LED, 1-FACE, 5-SECTION, BRACKET MOUNTED	EACH	3
88030110	SIGNAL HEAD, LED, 1-FACE, 5-SECTION, MAST-ARM MOUNTED	EACH	5
88030220	SIGNAL HEAD, LED, 2-FACE, 5-SECTION, BRACKET MOUNTED	EACH	1
88102825	PEDESTRIAN SIGNAL HEAD, POLYCARBONATE, LED, 1-FACE, BRACKET MOUNTED WITH COUNT DOWN TIMER	EACH	2
88102845	PEDESTRIAN SIGNAL HEAD, POLYCARBONATE, LED, 2-FACE, BRACKET MOUNTED WITH COUNT DOWN TIMER	EACH	2
88200210	TRAFFIC SIGNAL BACKPLATE, LOUVERED, ALUMINUM	EACH	8
88500100	INDUCTIVE LOOP DETECTOR	EACH	6
88700200	LIGHT DETECTOR	EACH	2
88700300	LIGHT DETECTOR AMPLIFIER	EACH	1
88800100	PEDESTRIAN PUSH BUTTON	EACH	6
89502375	REMOVE EXISTING TRAFFIC SIGNAL EQUIPMENT	EACH	1
Z0033046	RE-OPTIMIZE TRAFFIC SIGNAL SYSTEM - LEVEL 2	EACH	1

I.D.O.T. TRAFFIC SIGNAL INSTALLATION ELECTRICAL SERVICE REQUIREMENTS					TOTAL WATTAGE
TYPE	NO. LAMPS	WATTAGE		OPERATION (%)	TOTAL WATTAGE
		INCAND.	LED		
SIGNAL (RED)	13		17	0.50	102
SIGNAL (YELLOW)	13		25	0.25	73
SIGNAL (GREEN)	13		15	0.25	45
ARROW	4		12	0.10	14.4
PED. SIGNAL CONTROLLER	6		25	1.00	200
LUMINAIRE	2	310		0.50	310
TOTAL=					906.4

ENERGY COSTS - BILLED TO: \_\_\_\_\_

ENERGY SUPPLY - CONTACT: \_\_\_\_\_