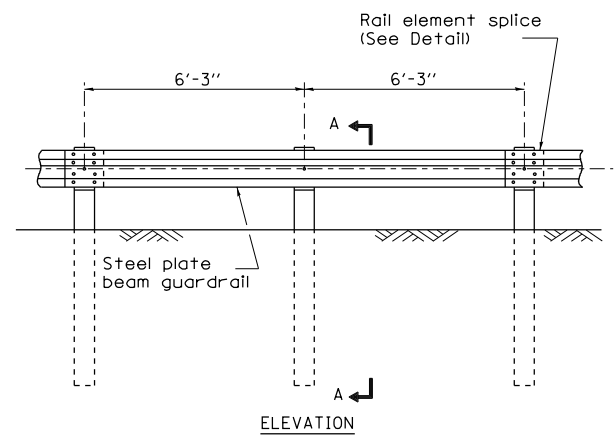
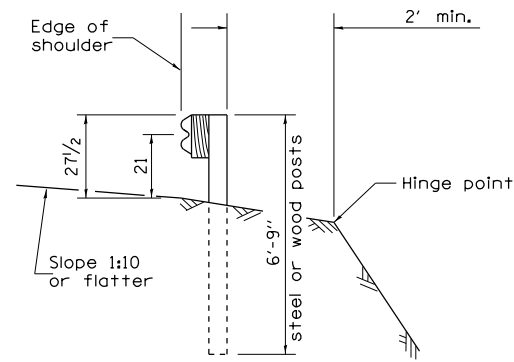


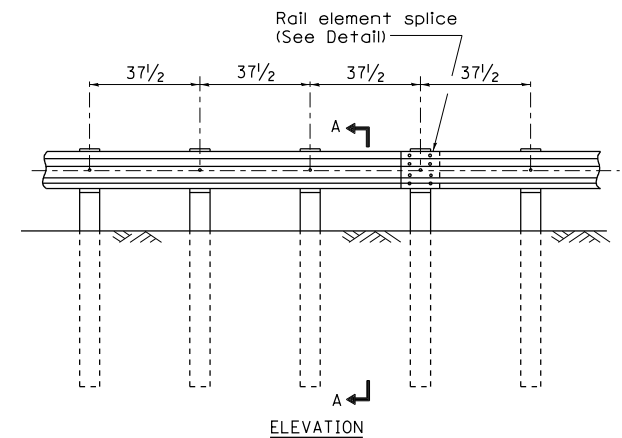
REMOVE AND REERECT STEEL PLATE BEAM GUARDRAIL



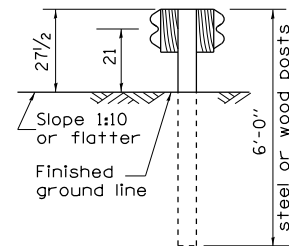
TYPE A
6'-3" Typical post spacing



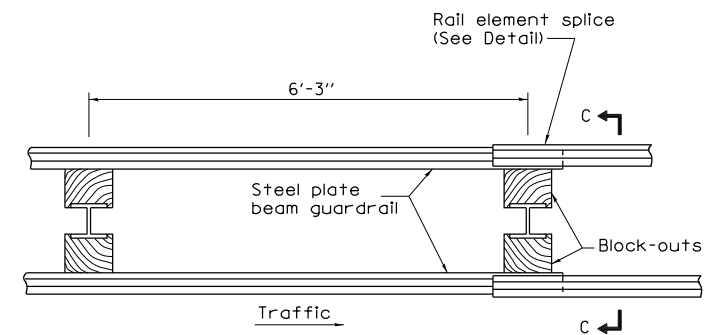
SECTION A-A



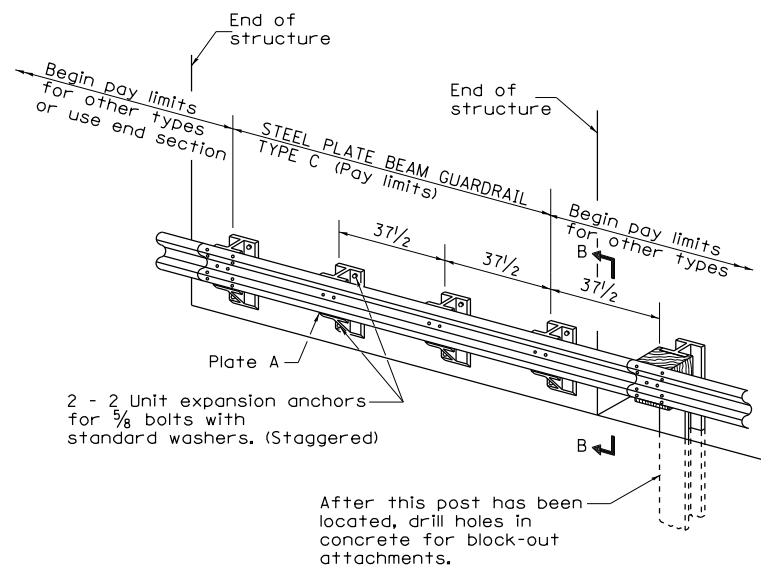
TYPE B
37 1/2" Closed post spacing



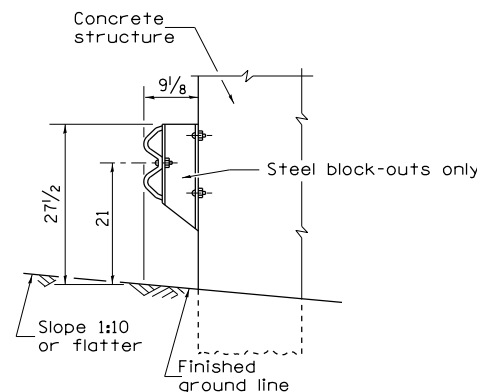
SECTION C-C



TYPE D
Double steel plate beam guardrail
6'-3" typical post spacing



TYPE C
37 1/2" Block-out spacing



SECTION B-B

GENERAL NOTES

- All slope ratios are expressed as units of vertical displacement to units of horizontal displacement (V:H).
- All dimensions are in inches unless otherwise shown.
- The existing steel posts may be drilled to match the bolt pattern shown herein for the wood block-out, or a new steel post shall be provided.
- This detail is applicable to the guardrail system used prior to January 1, 2007. For details on the Midwest Guardrail System, see Standard 630001.

HBM
ENGINEERING GROUP, LLC
CONSULTING & DESIGN
INSPECTION & TESTING
RESEARCH & TESTING

4415 WEST HARRISON ST.
SUITE 231
HILLSIDE, IL 60162
PHONE: (708) 236-0900
FAX: (708) 236-0901

DESIGNED - DISTRICT 2
CHECKED - MI
DRAWN - DISTRICT 2
CHECKED - JMG, MAI

REVISED -
REVISED -
REVISED -
REVISED -

STATE OF ILLINOIS
DEPARTMENT OF TRANSPORTATION

DISTRICT 2 STANDARD - 53.1
EB US ROUTE 20 OVER PECATONICA RIVER STRUCTURE NO. 089-0042

SHEET NO. 1 OF 4 SHEETS

F.A.P. RTE.	SECTION	COUNTY	TOTAL SHEETS	SHEET NO.
0301	(177-4B-1)M	STEPHENSON	43	14
				CONTRACT NO. 64J24

ILLINOIS FED. AID PROJECT

DATE - 03/13/2013