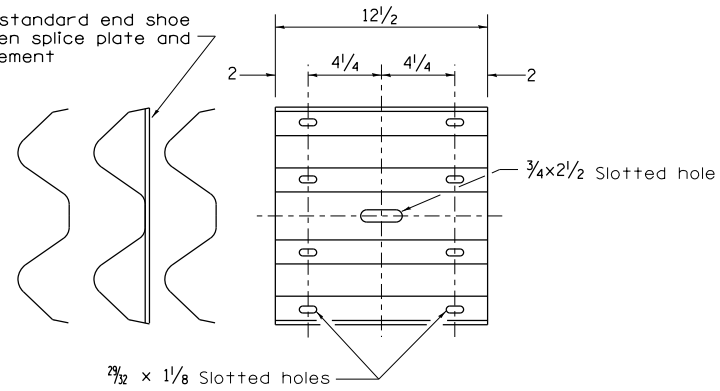
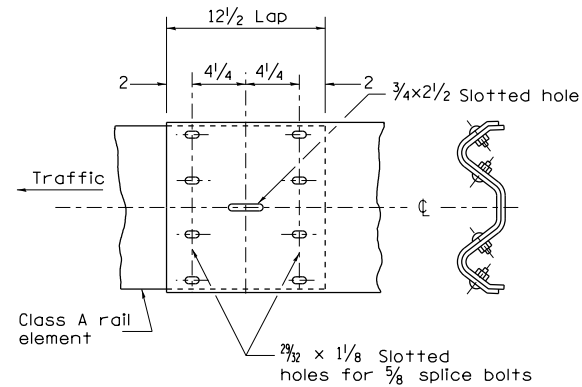


# REMOVE AND REERECT STEEL PLATE BEAM GUARDRAIL

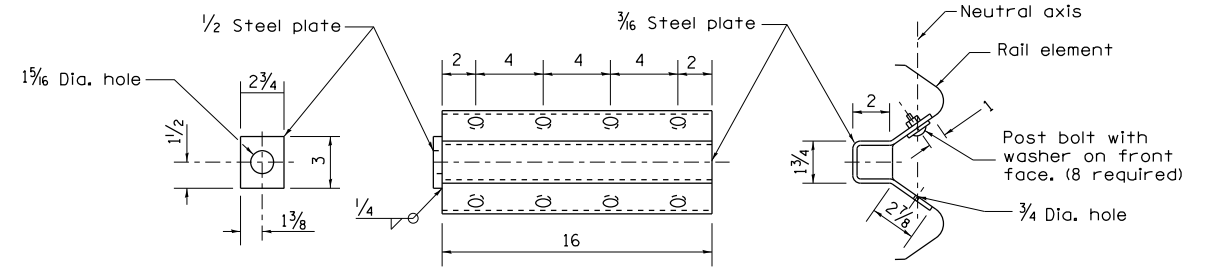
Place standard end shoe between splice plate and rail element



**SPLICE PLATE**



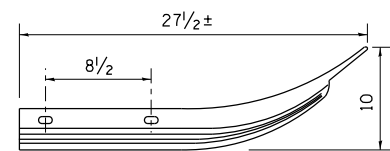
**RAIL ELEMENT SPLICE**



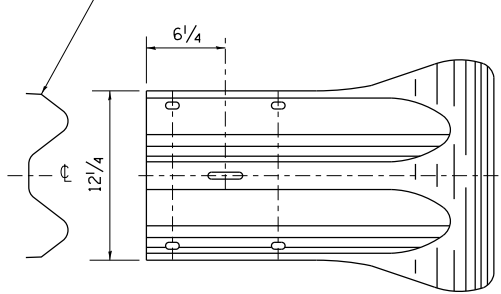
NOTE

Anchor plate T shall be used to attach cable assembly to guardrail when required on traffic barrier terminals.

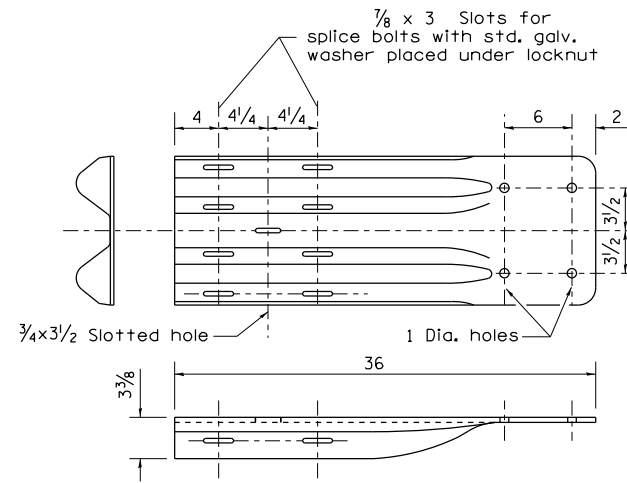
**ANCHOR PLATE T DETAILS**



Class A rail element



**END SECTION**



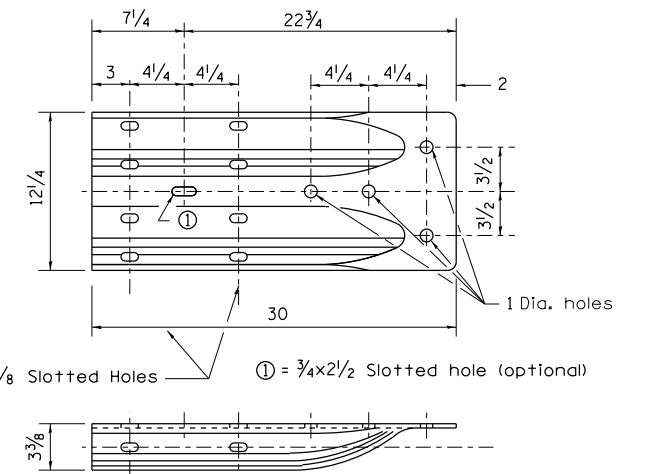
NOTE

When end shoe is attached to a bridge parapet which has an expansion joint, the bolts shall be provided with a locknut or double nut and shall be tightened only to a point that will allow guardrail movement.

The standard end shoe shall be attached to the concrete with pre-drilled or self-drilling anchor bolts. The anchor cone shall be set flush with the surface of the concrete.

Externally threaded studs protruding from the surface of the concrete will not be permitted.

**END SHOE**



**ALTERNATE END SHOE**

**HBM**  
ENGINEERING GROUP, LLC  
CONSULTING & DESIGN  
INSPECTION & TESTING  
RESEARCH & TESTING

4415 WEST HARRISON ST.  
SUITE 231  
MILLSIDE, IL 60162  
PHONE: (708) 236-0900  
FAX: (708) 236-0901

DATE - 03/13/2013

DESIGNED - DISTRICT 2  
CHECKED - MI  
DRAWN - DISTRICT 2  
CHECKED - JMG, MAI

REVISED -  
REVISED -  
REVISED -  
REVISED -

**STATE OF ILLINOIS  
DEPARTMENT OF TRANSPORTATION**

**DISTRICT 2 STANDARD - 53.1  
EB US ROUTE 20 OVER PECATONICA RIVER STRUCTURE NO. 089-0042**

SHEET NO. 4 OF 4 SHEETS

F.A.P. RTE.	SECTION	COUNTY	TOTAL SHEETS	SHEET NO.
0301	(177-4B-11M)	STEPHENSON	43	17
CONTRACT NO. 64J24				

ILLINOIS FED. AID PROJECT