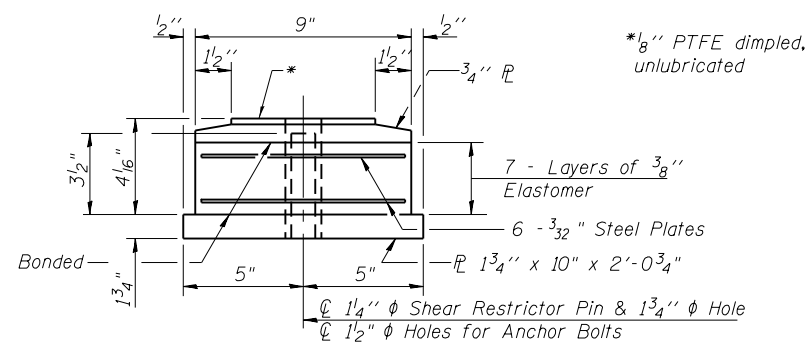
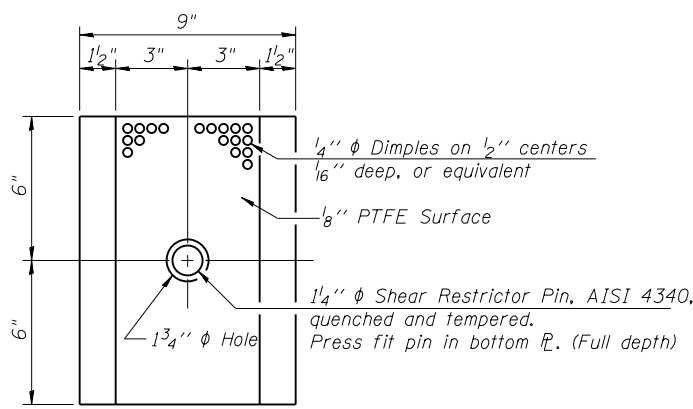
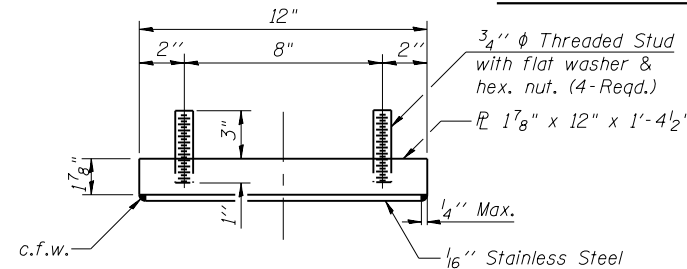
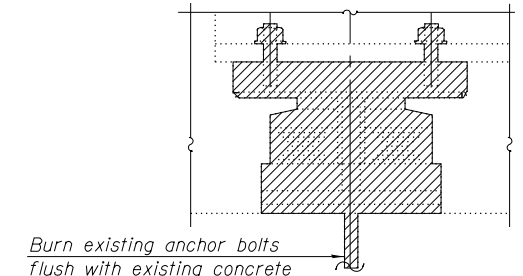
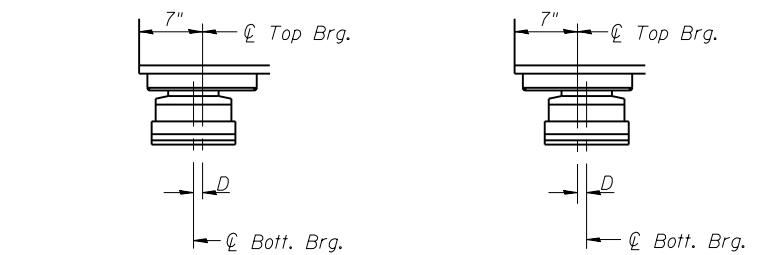
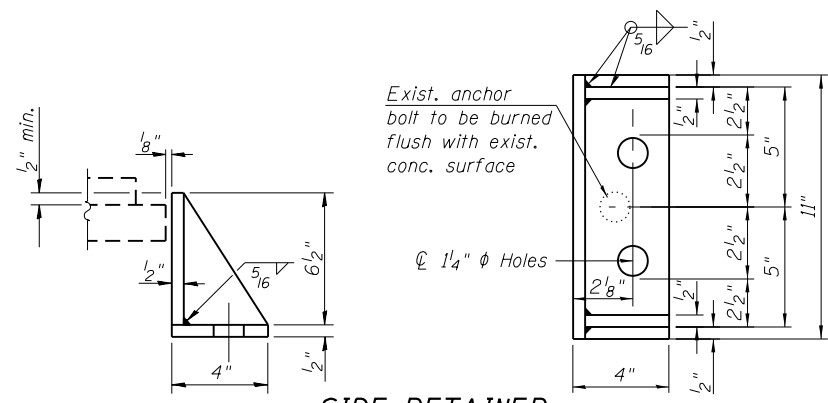
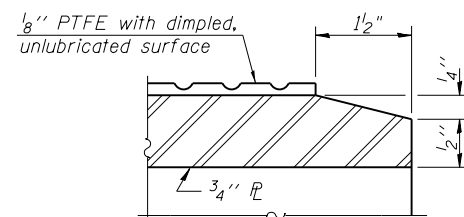


NOTES:

- Anchor bolts shall be ASTM F1554 all-thread (or an Engineer-approved alternate material) of the grade(s) and diameter(s) specified. ASTM A307 Grade C anchor bolts may be used in lieu of ASTM F1554 Grade 36 (Fy=36ksi). The corresponding specified grade of AASHTO M314 anchor bolts may be used in lieu of ASTM F1554.
- Drilled and set anchor bolts shall be installed according to Article 521.06 of the Standard Specifications.
- Side retainers, shim plates, connection bolts, and other steel members required for the elastomeric bearing assembly shall be included in the cost of Elastomeric Bearing Assembly, Type III.
- Prior to ordering any material, the Contractor shall verify in the field all bearing height and shim thickness dimensions.
- Two 1/8 in. adjusting shims shall be provided for each bearing in addition to all other plates or shims and placed as shown on bearing details.
- See special provisions for Jacking and Removing procedures for existing bearings.
- The 1/8" PTFE sheet shall be bonded directly to the top steel plate with a two-component, medium viscosity epoxy resin, conforming to the requirements of the Federal Specification MMM-A-134, Type I. The bond agent shall be applied on the full area of the contact surfaces.
- Bonding of 1/8" PTFE sheet during vulcanizing process will be permitted provided the process and method of adjusting assembly height is approved by the Engineer.
- Removal of Existing Bearings shall be performed after Temporary Shoring and Cribbing of existing beams/girders.
- Minimum jack capacity = 60 tons.



SECTION THRU PTFE



BILL OF MATERIAL

Item	Unit	Total
Elastomeric Bearing Assembly Type III	Each	6
Anchor Bolts, 1"	Each	24
Removal of Existing Bearings	Each	6

I-2E-3

1-27-12

HBM
ENGINEERING GROUP, LLC
CONSULTING & DESIGN
INSPECTION & RATING
RESEARCH & TESTING

4415 WEST HARRISON ST.
SUITE 231
MILLSIDE, IL 60162
PHONE: (708) 236-0900
FAX: (708) 236-0901

DESIGNED - JJS, LAK
CHECKED - MI
DRAWN - JJS, LAK
CHECKED - MAI, MI

REVISD -
REVISD -
REVISD -
REVISD -

DATE - 03/13/2013

STATE OF ILLINOIS
DEPARTMENT OF TRANSPORTATION

TYPE III ELASTOMERIC BEARING DETAILS
EB US ROUTE 20 OVER PECATONICA RIVER STRUCTURE NO. 089-0042

SHEET NO. S20 OF S26 SHEETS

F.A.P. RTE. SECTION COUNTY TOTAL SHEETS SHEET NO.
0301 (177-4B-11M) STEPHENSON 43 37
CONTRACT NO. 64J24

ILLINOIS FED. AID PROJECT