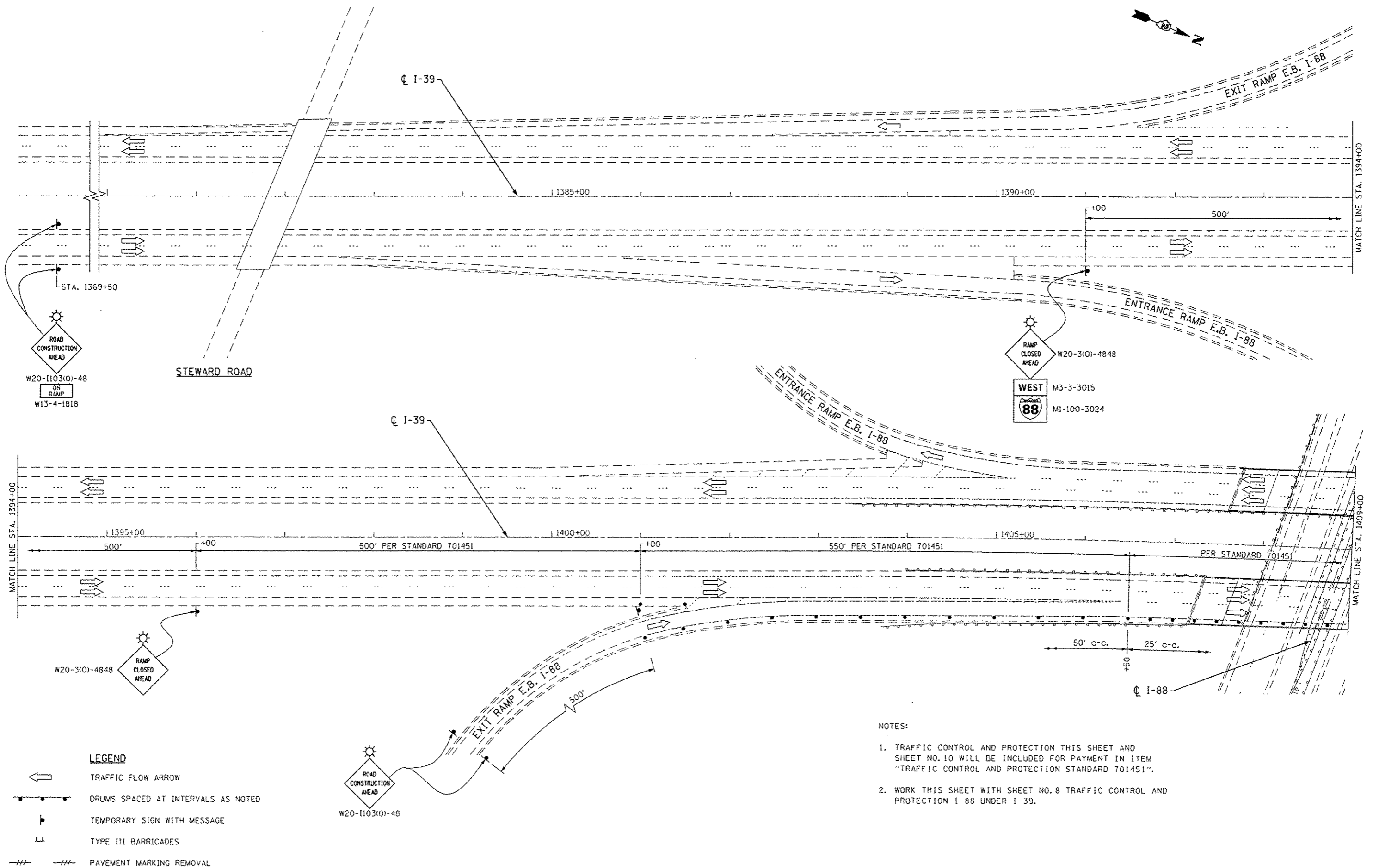


DATE	
BY	
SURVEYED	
PLOTTED	
NOTE BOOK	
AREAS CHECKED	

DATE	
BY	
SURVEYED	
PLOTTED	
NOTE BOOK	
AREAS CHECKED	



- LEGEND**
- TRAFFIC FLOW ARROW
  - DRUMS SPACED AT INTERVALS AS NOTED
  - TEMPORARY SIGN WITH MESSAGE
  - TYPE III BARRICADES
  - PAVEMENT MARKING REMOVAL

- NOTES:**
1. TRAFFIC CONTROL AND PROTECTION THIS SHEET AND SHEET NO. 10 WILL BE INCLUDED FOR PAYMENT IN ITEM "TRAFFIC CONTROL AND PROTECTION STANDARD 701451".
  2. WORK THIS SHEET WITH SHEET NO. 8 TRAFFIC CONTROL AND PROTECTION I-88 UNDER I-39.

FILE NAME = sht:stage1.01 I-39.dgn	<b>CHRISTIAN-ROSE &amp; ASSOCIATES, INC.</b> ENGINEERS-PLANNERS-SURVEYORS 211 WEST WACKER DRIVE CHICAGO, ILLINOIS 60606 PHONE: (312)372-2023 FAX: (312)372-5274	DESIGNED - E.M.	REVISED -	<b>STATE OF ILLINOIS</b> <b>DEPARTMENT OF TRANSPORTATION</b>	<b>TRAFFIC CONTROL AND PROTECTION</b> <b>STAGE I</b> <b>I-39 OVER I-88</b>			F.A.I. R.T.C.	SECTION	COUNTY	TOTAL SHEETS	SHEET NO.
PLOT DATE = 9/6/2012		DRAWN - B.K.	REVISED -		39	D2 BRIDGE PAINTING 2013-2	OCLE	26	9			
PLOT SCALE = 100,0000' / IN.		CHECKED - G.F.L.	REVISED -		CONTRACT NO. 64J27							
		DATE - JULY 2012	REVISED -		FED. ROAD DIST. NO. 1 [ILLINOIS] FED. AID PROJECT							
				SCALE:	SHEET NO.	OF	SHEETS	STA.	TO	STA.		