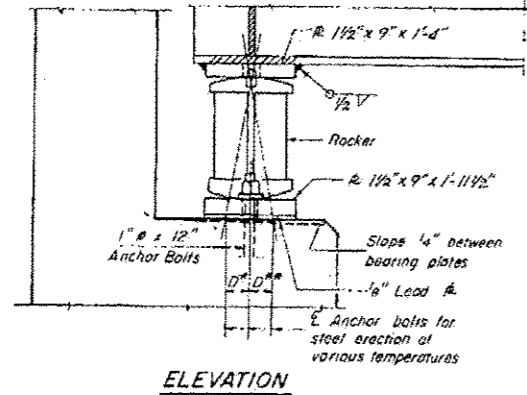


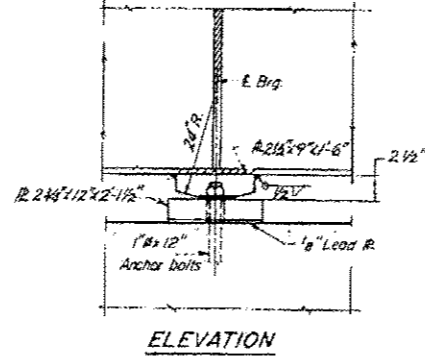
FOR INFORMATION ONLY

STATE OF ILLINOIS
DEPARTMENT OF TRANSPORTATION

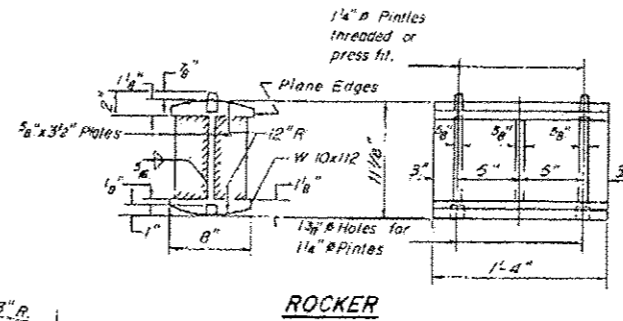
FA. 412-141-1A OGLE 828 211 28 SHEETS



ELEVATION



ELEVATION

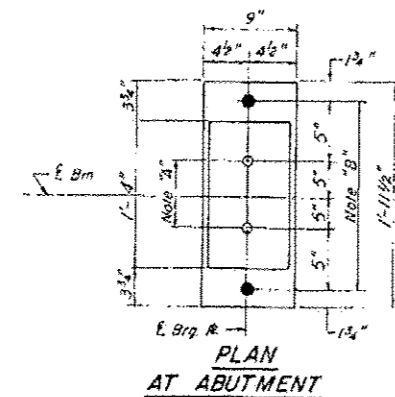


ROCKER

I_s and S_s are the moment of inertia and section modulus of the steel section. I_c and S_c are the moment of inertia and the section modulus of the composite section used in computing f_s .

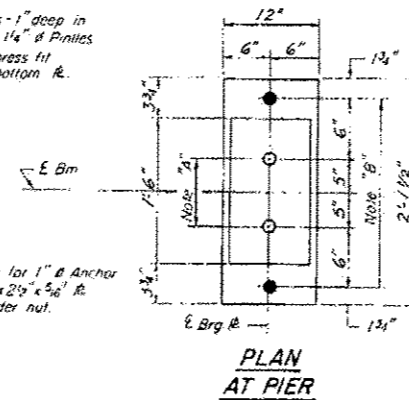
VR is the maximum LL + impact shear range in a span.

	0.4 Span 1	Pier	0.6 Span 2
I_s (in ⁴)	18,884.2	42,514.3	18,884.2
S_s (in ³)	870.68	1,443.06	870.68
DL (ft-k)	1015.9	1146.0	1015.9
M _{DL} (ft-k)	687.0	1767.8	687.0
f_s DL (ksi)	9.47	12.91	9.47
I_c (in ⁴)	37,478.6	✓	37,478.6
S_c (in ³)	1129.52	✓	1129.52
SCDL (ft-k)	531.5	531.5	531.5
M _{CDL} (ft-k)	423.0	751.16	423.0
f_s CDL (ksi)	4.49	5.49	4.49
I_c (neg) (in ⁴)	31,908.8	✓	31,908.8
S_c (in ³)	1236.0	✓	1236.0
M _{LL} (ft-k)	1011.6	854.0	1011.6
M _{IMP} (ft-k)	218.5	184.4	218.5
M _{TOTAL} (ft-k)	1230.1	1038.4	1230.1
f_s LL (ksi)	11.94	7.58	11.94
f_s TOTAL (ksi)	25.90	25.98	25.90
VR	73.5	✓	73.5



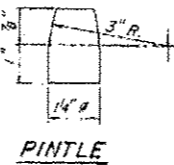
PLAN AT ABUTMENT

Note "A"
13/16" Holes - 1" deep in top R. for 1/4" Pintles Thread or press fit pintles in bottom R.



PLAN AT PIER

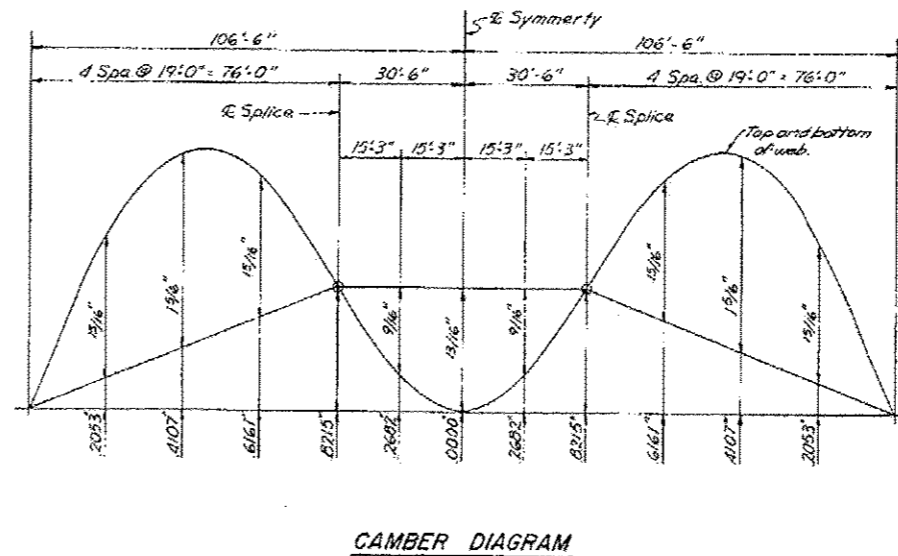
Note "B"
1/2" Holes for 1" Anchor Bolts - 2 1/2" x 2 1/2" x 5/8" R. Washers under nut.



PINTLE

NOTES FOR SETTING OF ANCHOR BOLTS AT EXPANSION BEARINGS

- Side of brg away from fixed brg
 $D^* = \frac{1}{8}$ " per each 100' of expansion for every 15° fall below the normal temp of 50° F.
 $D^{**} = \frac{1}{8}$ " per each 100' of expansion for every 15° rise above the normal temp. of 50° F.
- After beams have been erected and dimensions $D^* & D^{**}$ determined, holes shall be drilled and anchor bolts shall be grouted in place. All fixed anchor bolts may be built into the masonry.



CAMBER DIAGRAM

DESIGNED	MVM
CHECKED	HMW
DRAWN	BSB
CHECKED	HMW

I-2-6 3-29-71

	Girder 1	Girder 2	Girder 3	Girder 4	Girder 5	Girder 6	Girder 7	Girder 8	Girder 9	Girder 10	Girder 11	Girder 12	Girder 13	Girder 14
E. Brg. S. Abut.	832.328	832.194	832.011	831.828	831.645	831.462	831.279	831.096	830.913	830.730	830.547	830.364	830.181	830.000
E. Splice #1	832.173	832.024	831.842	831.662	831.480	831.299	831.117	830.937	830.756	830.575	830.394	830.213	830.032	829.851
E. Brg. Pier	832.022	831.847	831.686	831.506	831.325	831.145	830.964	830.784	830.604	830.423	830.243	830.062	829.881	829.701
E. Splice #2	832.008	831.847	831.667	831.488	831.308	831.128	830.948	830.768	830.588	830.408	830.228	830.048	829.868	829.688
E. Brg. N. Abut.	831.755	831.578	831.400	831.222	831.043	830.865	830.687	830.509	830.331	830.152	829.974	829.796	829.618	829.440

* For Girder Fabrication Only.

BEARING DETAILS
F.A. RTE. 412 SEC. 141-IHB-1
OGLE COUNTY
STA. 1408 + 92.95 (F.A. RTE. 412)