

**GENERAL NOTES**

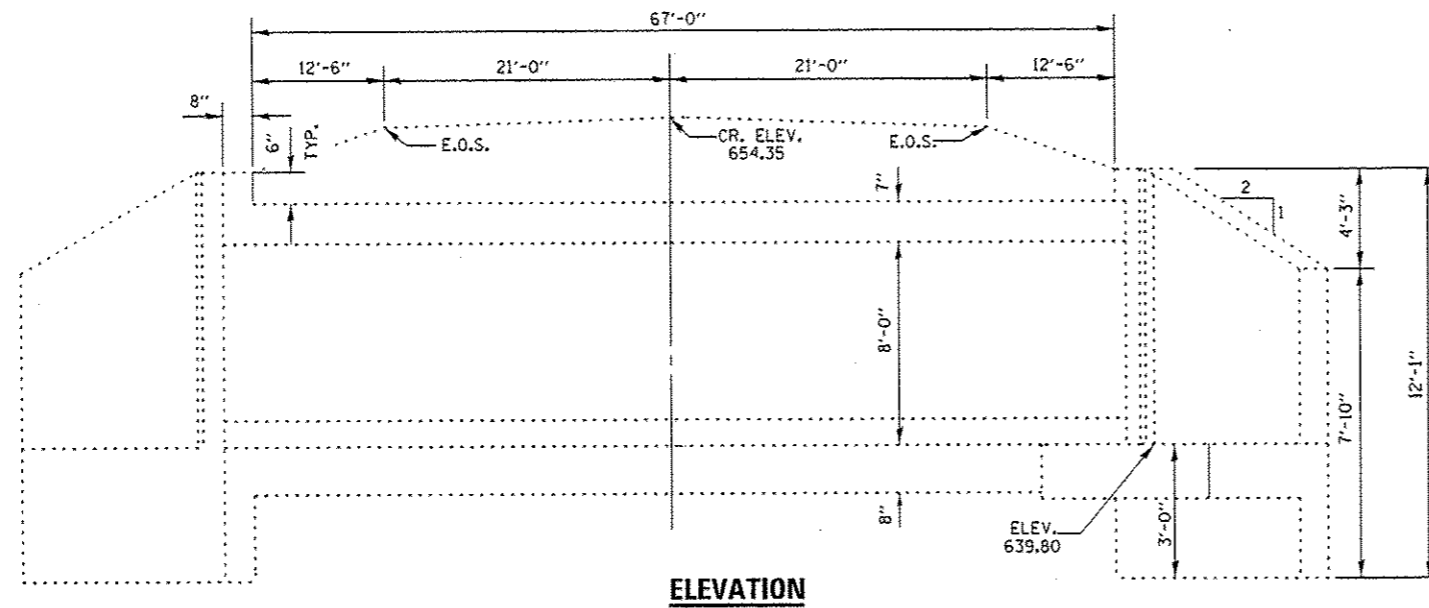
PLAN DIMENSIONS AND DETAILS RELATIVE TO EXISTING PLANS ARE SUBJECT TO NOMINAL CONSTRUCTION VARIATIONS. THE CONTRACTOR SHALL FIELD VERIFY EXISTING DIMENSIONS AND DETAILS AFFECTING NEW CONSTRUCTION AND MAKE NECESSARY APPROVED ADJUSTMENTS PRIOR TO CONSTRUCTION OR ORDERING OF MATERIALS. SUCH VARIATIONS SHALL NOT BE CAUSE FOR ADDITIONAL COMPENSATION FOR A CHANGE IN SCOPE OF THE WORK; HOWEVER, THE CONTRACTOR WILL BE PAID FOR THE QUANTITY ACTUALLY FURNISHED AT THE UNIT PRICE BID FOR THE WORK.

EXISTING REINFORCEMENT BARS EXTENDING INTO THE REMOVAL AREA SHALL BE CLEANED, STRAIGHTENED AND INCORPORATED INTO THE NEW CONSTRUCTION. ANY REINFORCEMENT BARS THAT ARE DAMAGED DURING CONCRETE REMOVAL SHALL BE REPLACED WITH AN APPROVED BAR SPLICER OR ANCHORAGE SYSTEM. COST INCLUDED WITH CONCRETE REMOVAL.

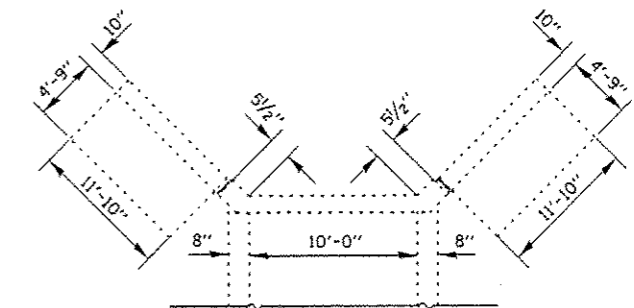
REINFORCEMENT BARS DESIGNATED (E) SHALL BE EPOXY COATED

WATERPROOFING MEMBRANE SHALL BE APPLIED TO THE DESIGNATED AREAS ON THE BACKSIDE OF THE WINGWALL AS DETAILED

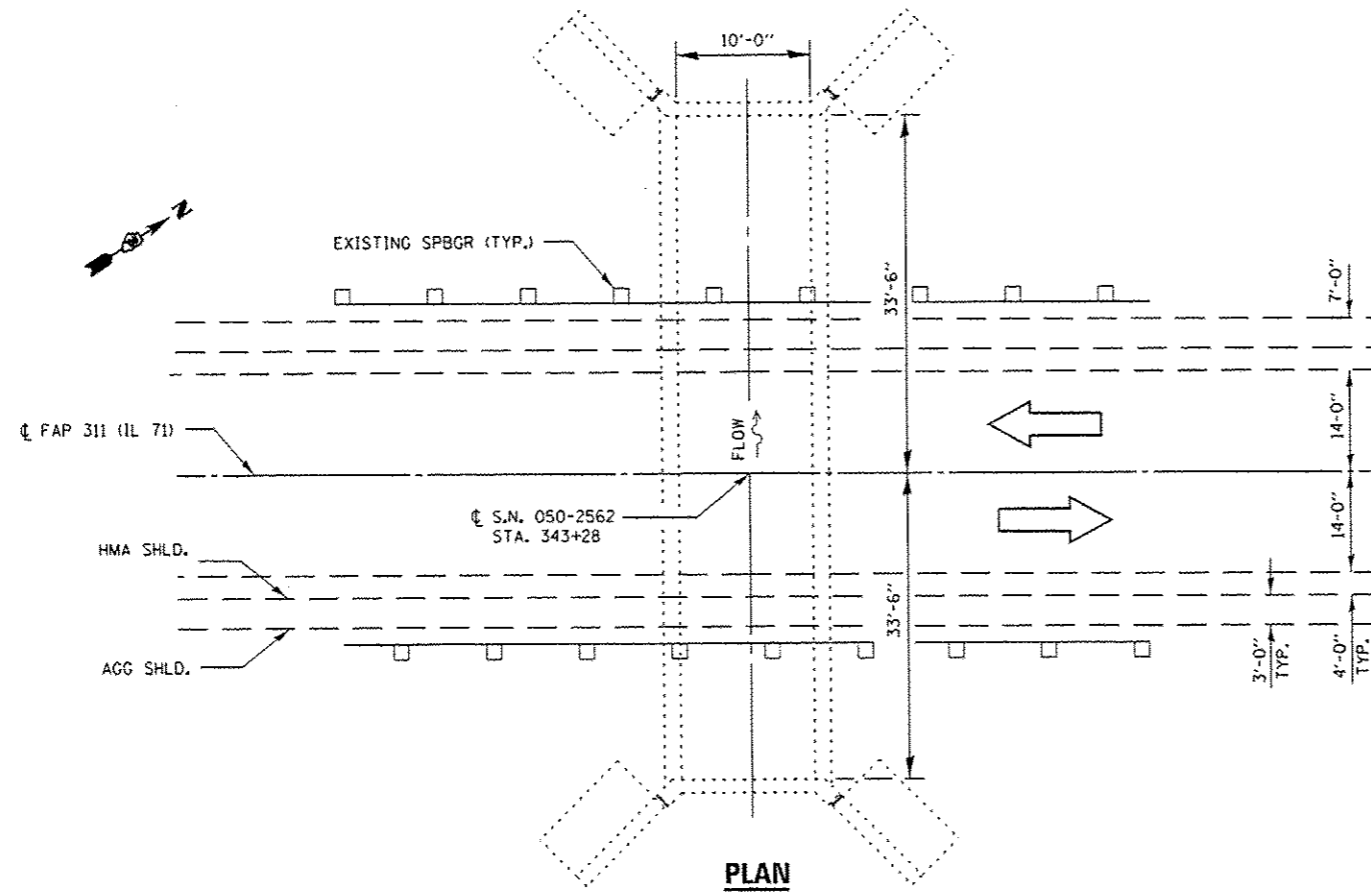
SUITABLE EXISTING SOIL SHALL BE EXCAVATED, STOCKPILED, AND REUSED FOR THE VEGETATION SUSTAINING SOIL COVERING THE TOP FOUR INCHES OF THE FINISHED EARTHWORK. THE WORK SHALL BE PAID FOR AS TOPSOIL EXCAVATION AND PLACEMENT.



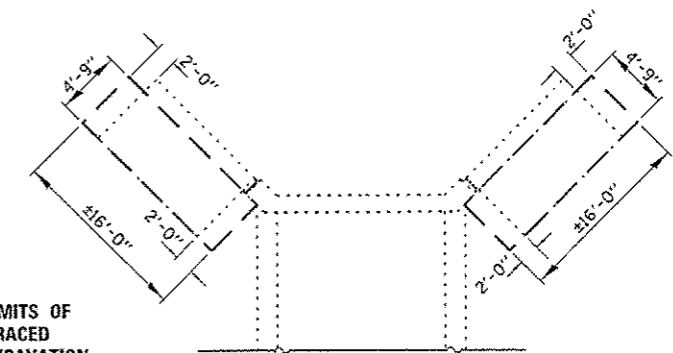
**ELEVATION**



**PLAN  
SHOWING BOX CULVERT DIMENSIONS**



**PLAN**



**PLAN  
SHOWING EXCAVATION DIMENSIONS**

**TOTAL BILL OF MATERIAL**

| ITEM                                | UNIT  | TOTAL |
|-------------------------------------|-------|-------|
| PERIMETER EROSION BARRIER           | FOOT  | 200   |
| TOPSOIL EXCAVATION AND PLACEMENT    | CU YD | 10    |
| BRACED EXCAVATION                   | CU YD | 80    |
| CONCRETE REMOVAL                    | CU YD | 10.2  |
| CONCRETE BOX CULVERTS               | CU YD | 10.2  |
| REINFORCEMENT BARS (EPOXY COATED)   | POUND | 890   |
| SHEET WATERPROOFING MEMBRANE SYSTEM | SQ YD | 15.8  |
| HEAVY DUTY EROSION CONTROL BLANKET  | SQ YD | 265   |



*David Carl Puzey 5/9/13*  
*Expires 11/30/14*

| FILE NAME                             | USER NAME | DESIGNED | REVISIONS | STATE OF ILLINOIS DEPARTMENT OF TRANSPORTATION | GENERAL PLAN AND ELEVATION DETAILS FOR LOCATION 1: SN 050-2562 | F.A.P. RTE.               | SECTION             | COUNTY | TOTAL SHEETS       | SHEET NO. |
|---------------------------------------|-----------|----------|-----------|--|--|---------------------------|---------------------|--------|--------------------|-----------|
| c:\pwwork\puzed\puzely\d0311733\03666 | puzely    | RS       | REVISIONS |  |  | 311                       | D3 WW REPAIR 2014-1 |        | 41                 | 8         |
| PLOT SCALE: 1/8"=1'-0"                |           | RS       | REVISIONS |  |  | *KENDALL & LASALLE        |                     |        | CONTRACT NO. 66C40 |           |
| PLOT DATE: 4/3/2013                   |           | RW       | REVISIONS |  | SCALE:   | ILLINOIS FED. AID PROJECT |                     |        |                    |           |
|                                       |           |          | REVISIONS |  | SHEET 2 OF 5 SHEETS  | STA. 343+28               |                     |        |                    |           |