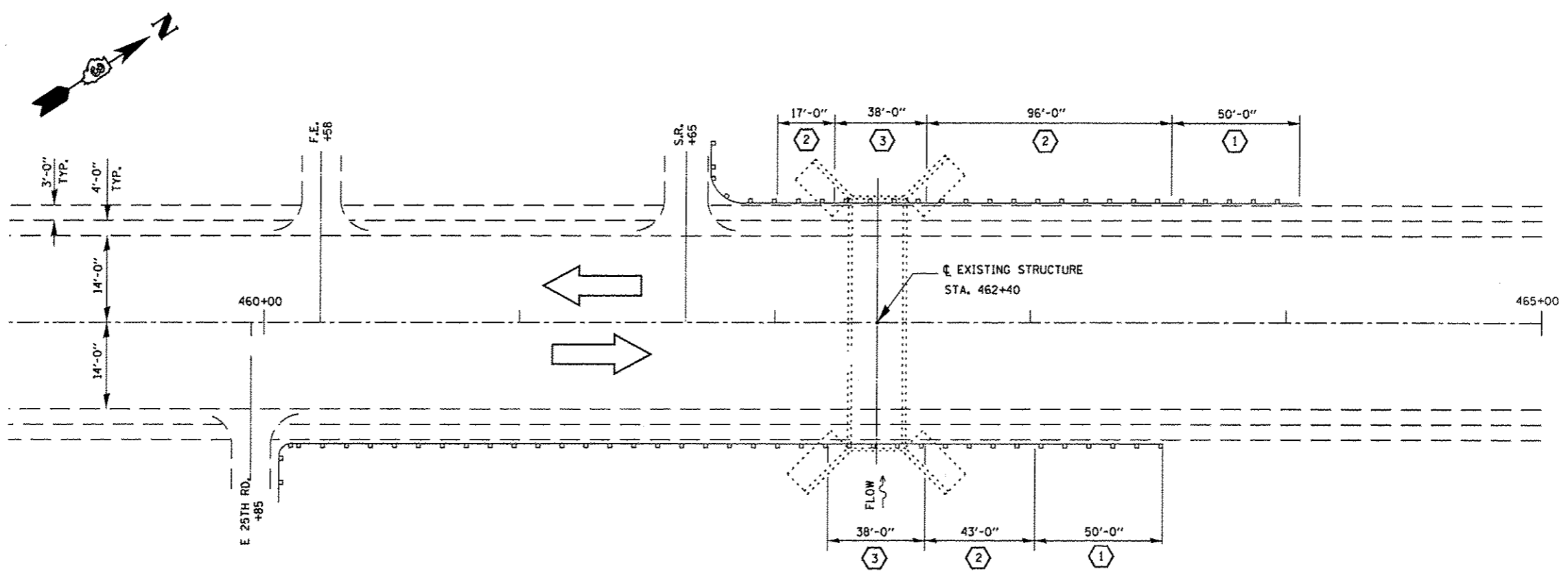


BM #552 - RAIL ROAD SPIKE IN POWER POLE ACROSS FROM E 25TH RD.

STA. 459+99 (S) 41.25' LT ELEV. 644.420



KEY

- ① REMOVE & RE-ERECT
TERMINAL END SECTION
- ② REMOVE & RE-ERECT
SPBGR
- ③ REMOVE EXISTING SPBGR.
INSTALL LONG-SPAN GUARDRAIL
OVER CULVERT 12 FT 6 IN.

PLAN

S.N. 050-2567
 STA. 462+40
 8' X 8'
 R.C. BOX CULVERT
 NO SKEW

FILE NAME *	USER NAME = petelyj	DESIGNED - RS	REVISED -	STATE OF ILLINOIS DEPARTMENT OF TRANSPORTATION	GENERAL ROADWAY PLAN FOR LOCATION 2: SN 050-2567	F.A.P. RTE.	SECTION	COUNTY	TOTAL SHEETS	SHEET NO.
c:\p\work\p\dot\petelyj\08311733\03660	0-aht-detail.dgn	DRAWN - RS	REVISED -			311	D3 WW REPAIR 2014-1	*	41	12
	PLOT SCALE = 100.0000' / in.	CHECKED - RW	REVISED -			*KENDALL & LASALLE		CONTRACT NO. 66C40		
	PLOT DATE = 4/3/2013	DATE -	REVISED -			SCALE:	SHEET 1 OF 6 SHEETS	STA. 462+40	ILLINOIS FED. AID PROJECT	