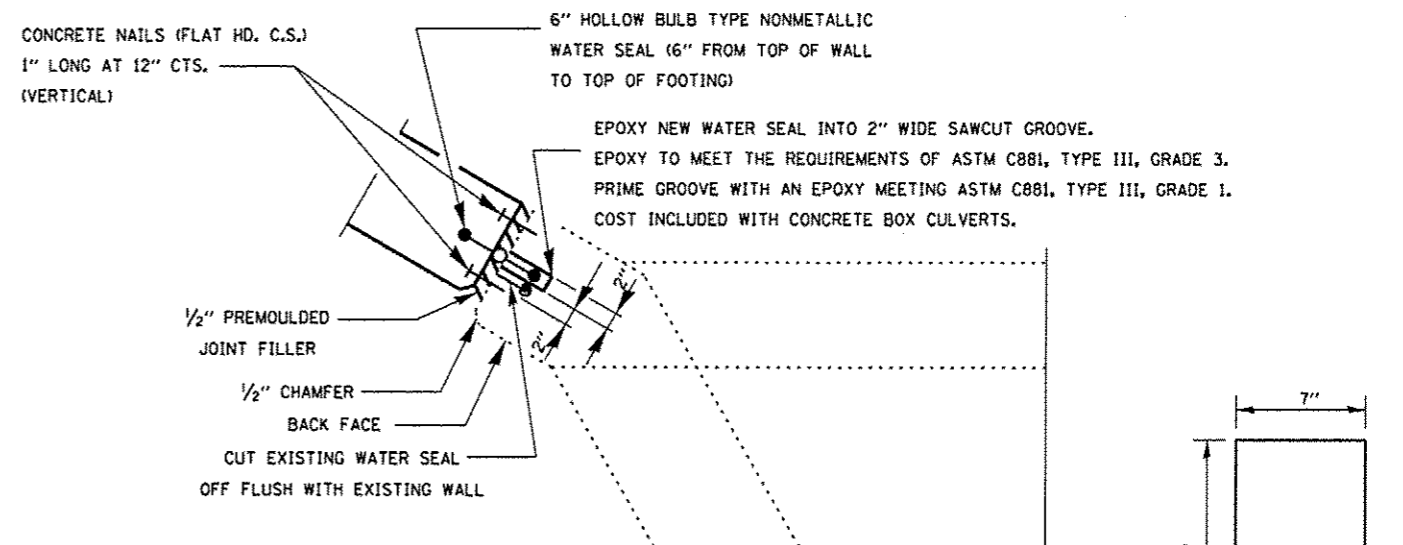


HALF ELEVATION

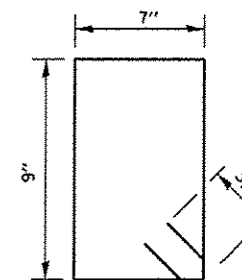
LAP LENGTH

BAR SIZE TO BE SPLICED	MIN. LAP LENGTH
#3	2'-1"
#4	2'-1"
#5	2'-7"
#6	3'-1"

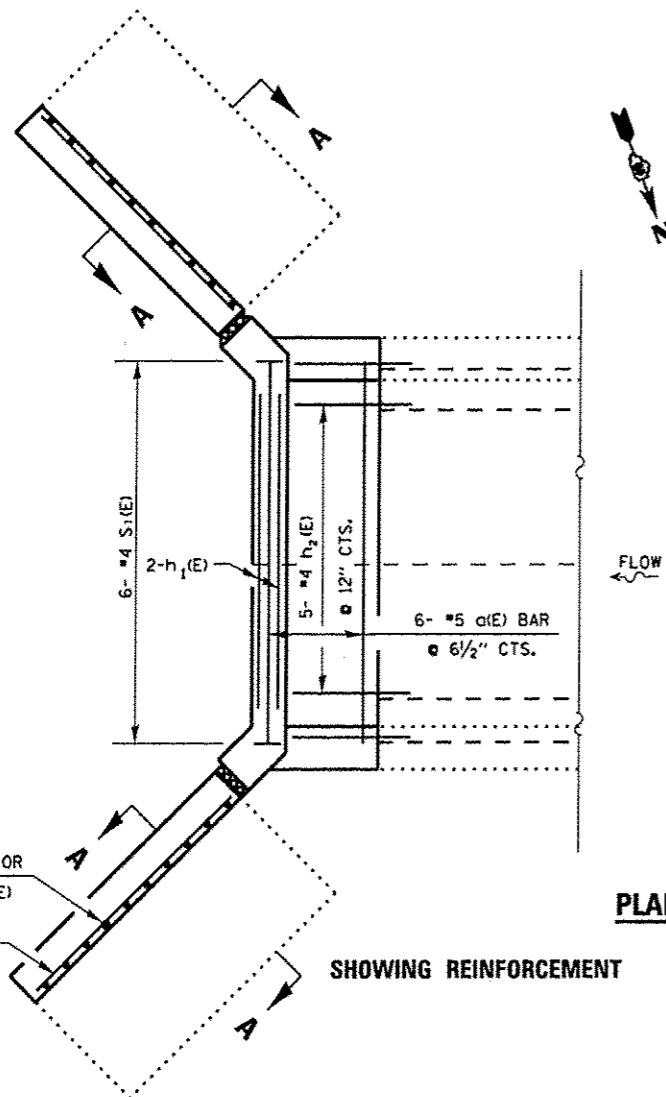
** ORDER V₁(E) BAR FULL LENGTH AND CUT TO FIT SKEW
 *** h₂(E) SHALL BE DRILLED AND EPOXY GROUTED 9" MIN.
 INTO EXISTING FACE OF CONCRETE. V₂(E) SHALL BE
 DRILLED AND EPOXY GROUTED 5" INTO BOTTOM SLAB.



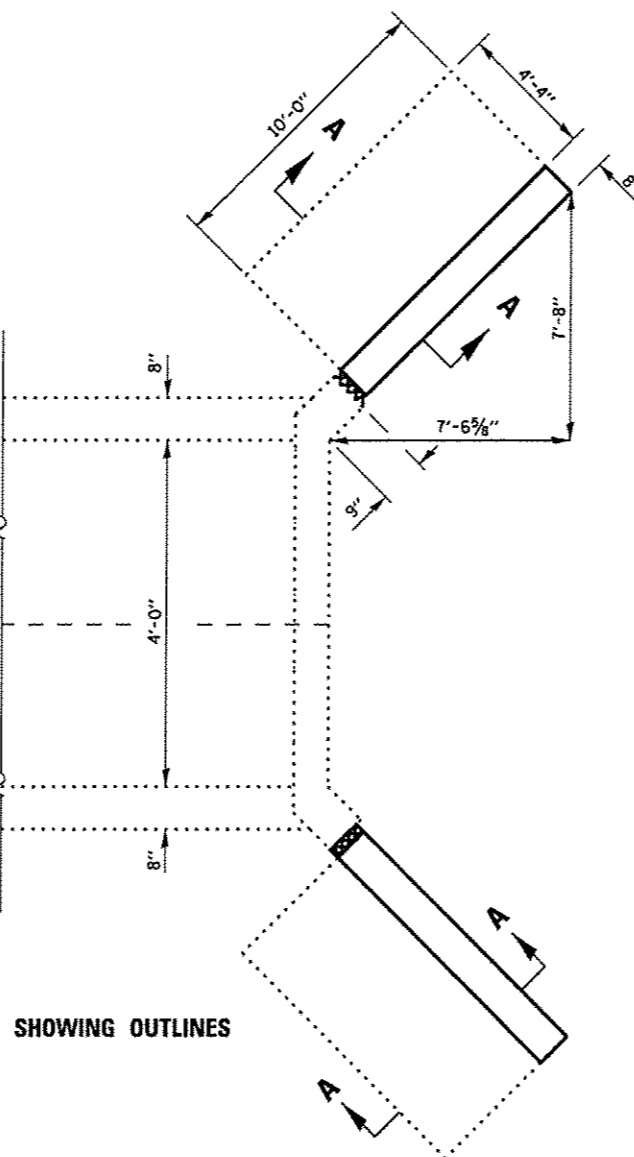
CORNER DETAIL



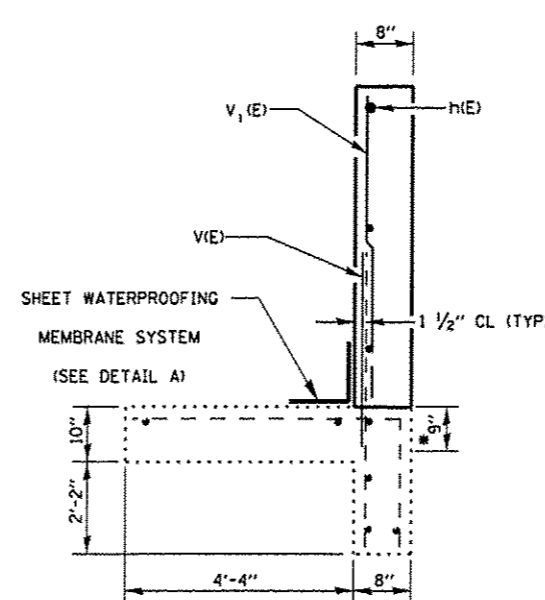
**S₁ BAR
DOWNSTREAM**



PLAN

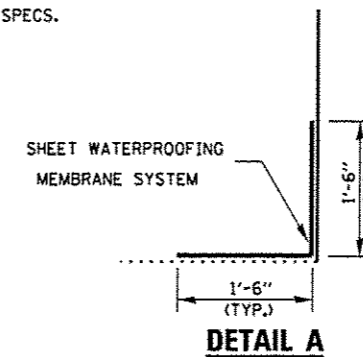


SHOWING OUTLINES

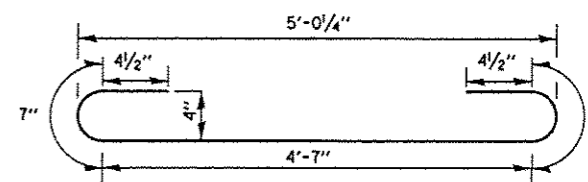


SECTION A-A

* DRILL AND GROUT #5 V₂(E) BAR INTO EXISTING FOOTING AT SPECIFIED SPACING AND DEPTH IN ACCORDANCE WITH ART. 584 OF THE STANDARD SPECS.



DETAIL A



a(E) BAR

BILL OF MATERIAL

BAR	NO.	SIZE	LENGTH	SHAPE
a(E)	6	#5	6'-6"	—
h(E)	32	#4	9'-8"	—
h1(E)	2	#5	4'-6"	—
h2(E)	16	#4	3'-6"	—
s1(E)	6	#4	3'-3"	□
v(E)	40	#5	4'-0"	—
v1(E)	40	#4	7'-10"	—
v2(E)	6	#4	7'-9"	—
CONCRETE REMOVAL			CU. YD.	8.5
CONCRETE BOX CULVERTS			CU. YD.	8.5
SHEET WATERPROOFING MEMBRANE SYSTEM			SO. YD.	13.33
REINFORCEMENT BARS, EPOXY COATED			LBS.	720

FILE NAME *	USER NAME = patalyj	DESIGNED - RS	REVISED -
o:\p\work\p\dot\patalyj\d0311733\03660	0-shr-details.dgn	DRAWN - RS	REVISED -
	PLOT SCALE = 100.0000' / in.	CHECKED - RW	REVISED -
	PLOT DATE = 4/3/2013	DATE -	REVISED -

**STATE OF ILLINOIS
DEPARTMENT OF TRANSPORTATION**

**RECONSTRUCTION DETAILS
FOR LOCATION 3: SN 047-2572**

SCALE: SHEET 5 OF 6 SHEETS STA. 1120+80

F.A.P. RTE.	SECTION	COUNTY	TOTAL SHEETS	SHEET NO.
311	D3 WW REPAIR 2014-1	*	41	22
*KENDALL & LASALLE			CONTRACT NO. 66C40	
ILLINOIS FED. AID PROJECT				