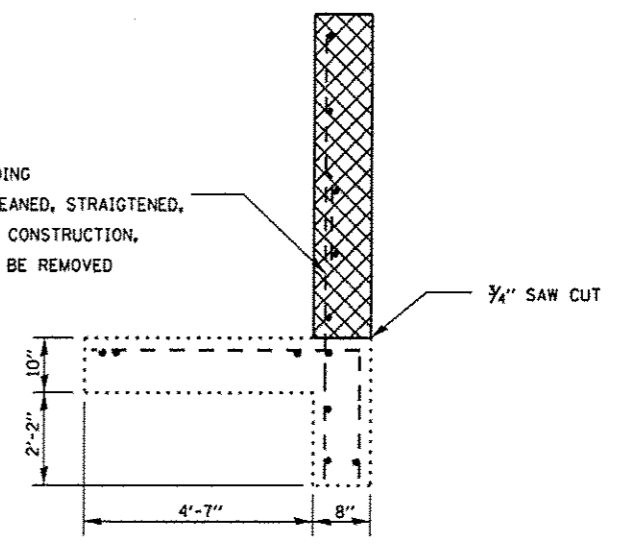
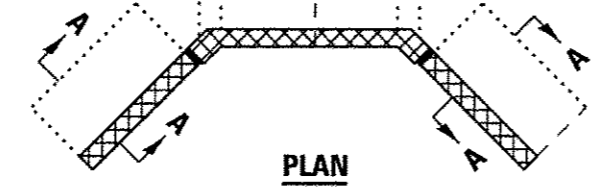


EXISTING VERTICAL REBAR EXTENDING INTO REMOVAL AREA SHALL BE CLEANED, STRAIGHTENED, AND INCORPORATED INTO THE NEW CONSTRUCTION, ALL OTHER REINFORCEMENT SHALL BE REMOVED

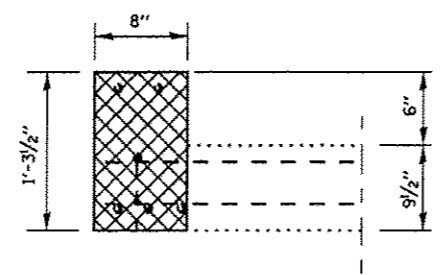


SECTION A-A

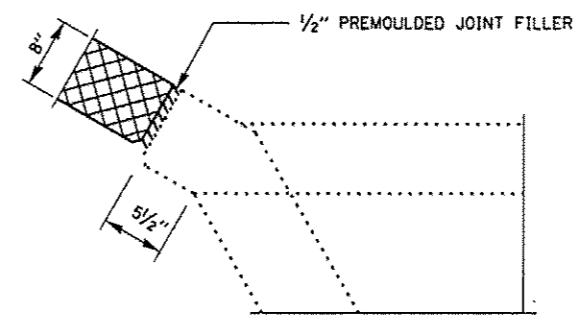
CONCRETE REMOVAL



PLAN



HEADWALL REMOVAL DETAIL



CORNER DETAIL (TYPICAL)

BILL OF MATERIAL

ITEM	UNIT	TOTAL
CONCRETE REMOVAL	CU YD	7