

GENERAL NOTES

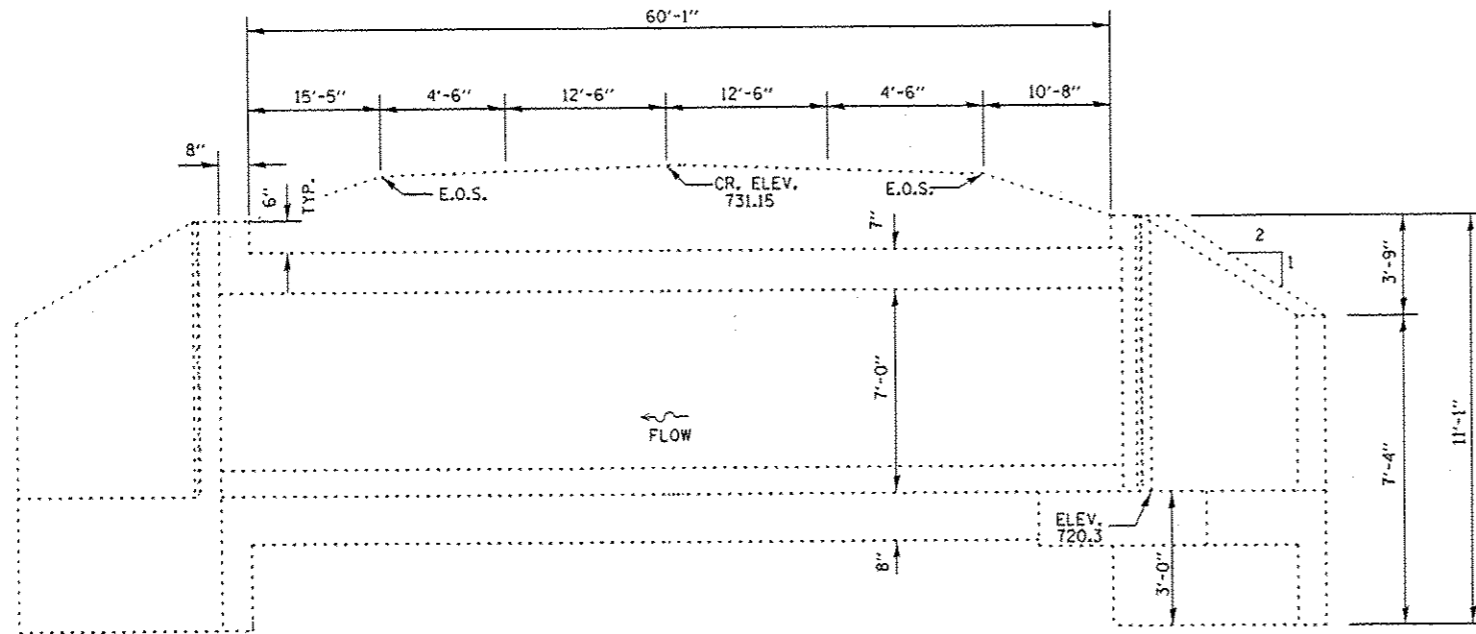
EXISTING REINFORCEMENT BARS EXTENDING INTO THE REMOVAL AREA SHALL BE CLEANED, STRAIGHTENED AND INCORPORATED INTO THE NEW CONSTRUCTION. ANY REINFORCEMENT BARS THAT ARE DAMAGED DURING CONCRETE REMOVAL SHALL BE REPLACED WITH AN APPROVED BAR SPLICER OR ANCHORAGE SYSTEM. COST INCLUDED WITH CONCRETE REMOVAL.

REINFORCEMENT BARS DESIGNATED (E) SHALL BE EPOXY COATED

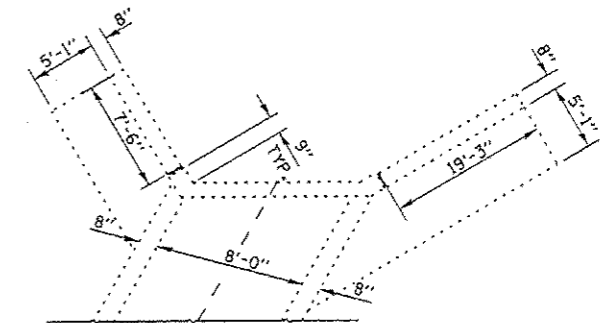
WATERPROOFING MEMBRANE SHALL BE APPLIED TO THE DESIGNATED AREAS ON THE BACKSIDE OF THE WINGWALL AS DETAILED

PLAN DIMENSIONS AND DETAILS RELATIVE TO EXISTING PLANS ARE SUBJECT TO NOMINAL CONSTRUCTION VARIATIONS. THE CONTRACTOR SHALL FIELD VERIFY EXISTING DIMENSIONS AND DETAILS AFFECTING NEW CONSTRUCTION AND MAKE NECESSARY APPROVED ADJUSTMENTS PRIOR TO CONSTRUCTION OR ORDERING OF MATERIALS. SUCH VARIATIONS SHALL NOT BE CAUSE FOR ADDITIONAL COMPENSATION FOR A CHANGE IN SCOPE OF THE WORK; HOWEVER, THE CONTRACTOR WILL BE PAID FOR THE QUANTITY ACTUALLY FURNISHED AT THE UNIT PRICE BID FOR THE WORK.

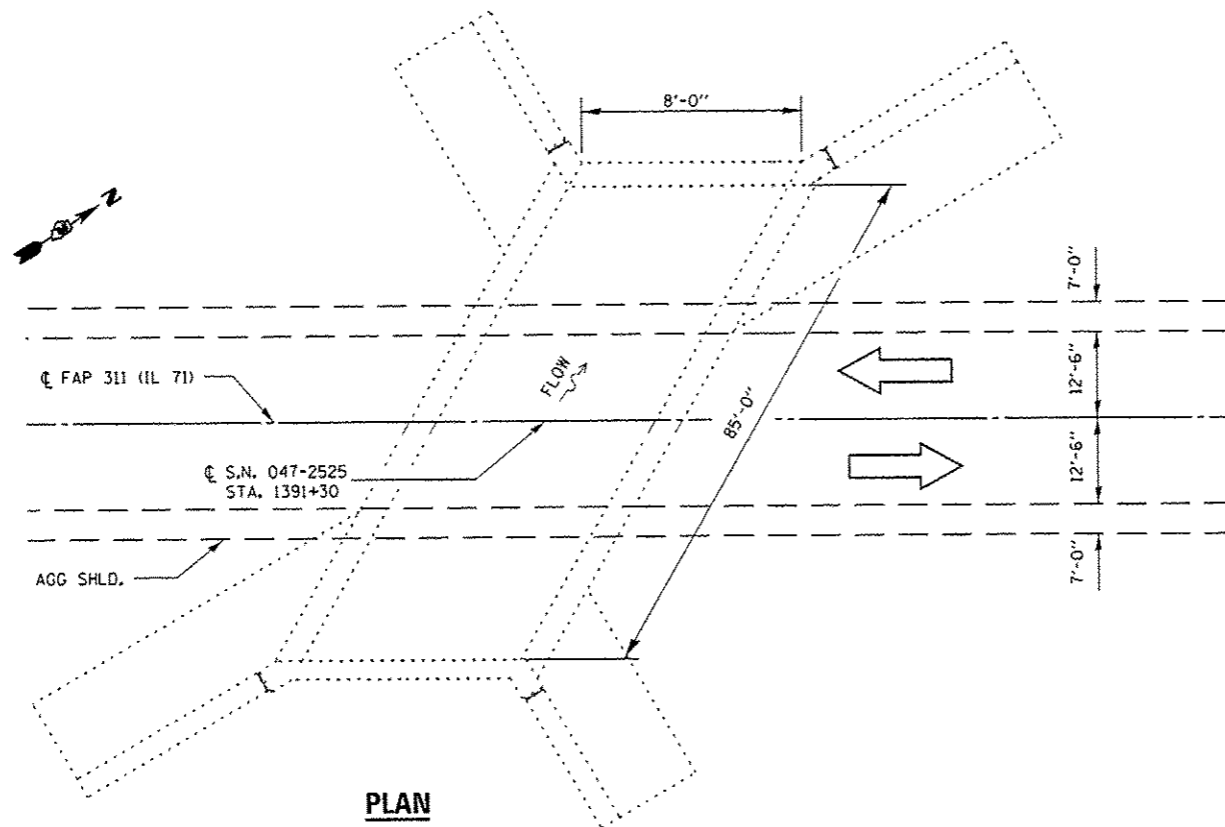
SUITABLE EXISTING SOIL SHALL BE EXCAVATED, STOCKPILED, AND REUSED FOR THE VEGETATION SUSTAINING SOIL COVERING THE TOP FOUR INCHES OF THE FINISHED EARTHWORK. THE WORK SHALL BE PAID FOR AS TOPSOIL EXCAVATION AND PLACEMENT.



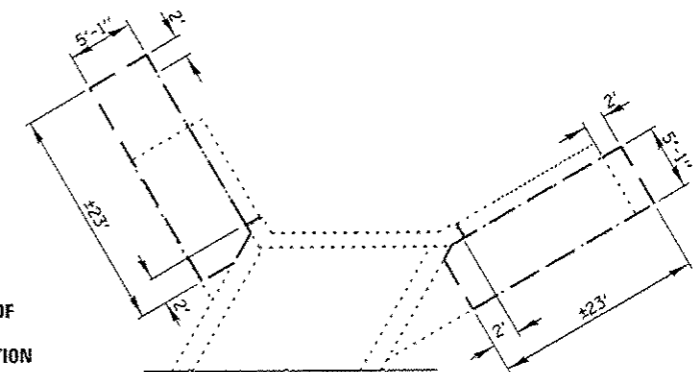
ELEVATION



PLAN
SHOWING BOX CULVERT DIMENSIONS



PLAN



PLAN
SHOWING EXCAVATION DIMENSIONS

TOTAL BILL OF MATERIAL

ITEM	UNIT	TOTAL
PERIMETER EROSION BARRIER	FOOT	200
TOPSOIL EXCAVATION AND PLACEMENT	CU YD	11
BRACED EXCAVATION	CU YD	108
CONCRETE REMOVAL	CU YD	8.2
STRUCTURAL REPAIR OF CONCRETE ≤ 5"	SQ FT	10
CONCRETE BOX CULVERTS	CU YD	8.2
REINFORCEMENT BARS (EPOXY COATED)	POUND	1130
SHEET WATERPROOFING MEMBRANE SYSTEM	SQ YD	17.9
HEAVY DUTY EROSION CONTROL BLANKET	SQ YD	280



David Carl Puzey 5/9/13
Expires 1/30/14

FILE NAME: c:\pwork\pwork\patel\13911733\03660	USER NAME: patel	DESIGNED: RS	REVISED: -
	0-ent-details.dgn	DRAWN: RS	REVISED: -
	PLOT SCALE: 1/8" = 1'-0"	CHECKED: RW	REVISED: -
	PLOT DATE: 4/23/2013	DATE: -	REVISED: -

STATE OF ILLINOIS
DEPARTMENT OF TRANSPORTATION

GENERAL PLAN AND ELEVATION
DETAILS FOR LOCATION 5: SN 047-2525
SCALE: SHEET 3 OF 6 SHEETS STA. 1391+30

F.A.P. RTE. 311	SECTION 03 WW REPAIR 2014-1	COUNTY *	TOTAL SHEETS 41	SHEET NO. 32
* KENDALL & LASALLE			CONTRACT NO. 66C40	
ILLINOIS FED. AID PROJECT				