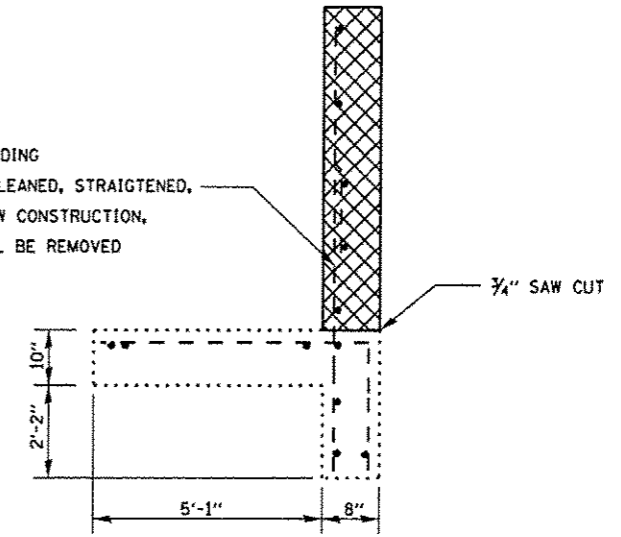


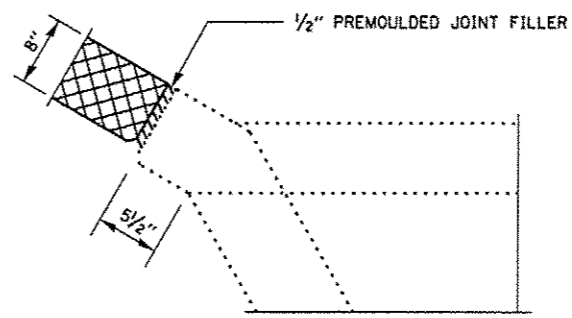
PLAN

EXISTING VERTICAL REBAR EXTENDING INTO REMOVAL AREA SHALL BE CLEANED, STRAIGHTENED, AND INCORPORATED INTO THE NEW CONSTRUCTION, ALL OTHER REINFORCEMENT SHALL BE REMOVED

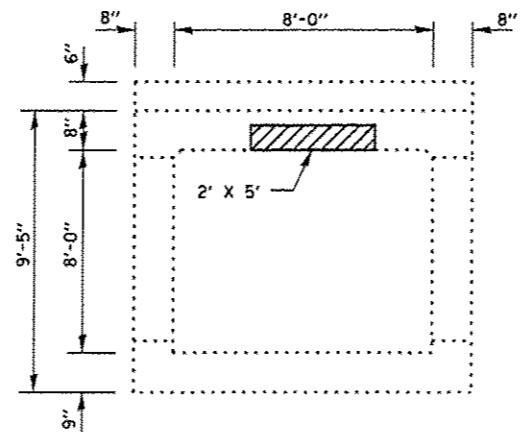


SECTION A-A

- CONCRETE REMOVAL**
- STRUCTURAL REPAIR OF CONCRETE < 5"**



CORNER DETAIL (TYPICAL)



VIEW B-B

BILL OF MATERIAL

ITEM	UNIT	TOTAL
CONCRETE REMOVAL	CU YD	8.2
STRUCTURAL REPAIR OF CONCRETE < 5"	SQ FT	10

FILE NAME *	USER NAME * patelvj	DESIGNED - RS	REVISED -
o:\p\work\p\p\patelvj\d8311733\0366C	8-sht-details.dgn	DRAWN - RS	REVISED -
	PLOT SCALE * 1/8" = 1' / in.	CHECKED - RW	REVISED -
	PLOT DATE * 4/3/2013	DATE -	REVISED -

STATE OF ILLINOIS
DEPARTMENT OF TRANSPORTATION

**CONCRETE REMOVAL AND REPAIR DETAILS
FOR LOCATION 5: SN 047-2525**

F.A.P. RTE.	SECTION	COUNTY	TOTAL SHEETS	SHEET NO.
311	D3 WW REPAIR 2014-1	*	41	33
* KENDALL & LASALLE		CONTRACT NO. 66C40		
ILLINOIS FED. AID PROJECT				

SCALE: SHEET 4 OF 6 SHEETS STA. 1391+30