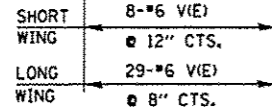


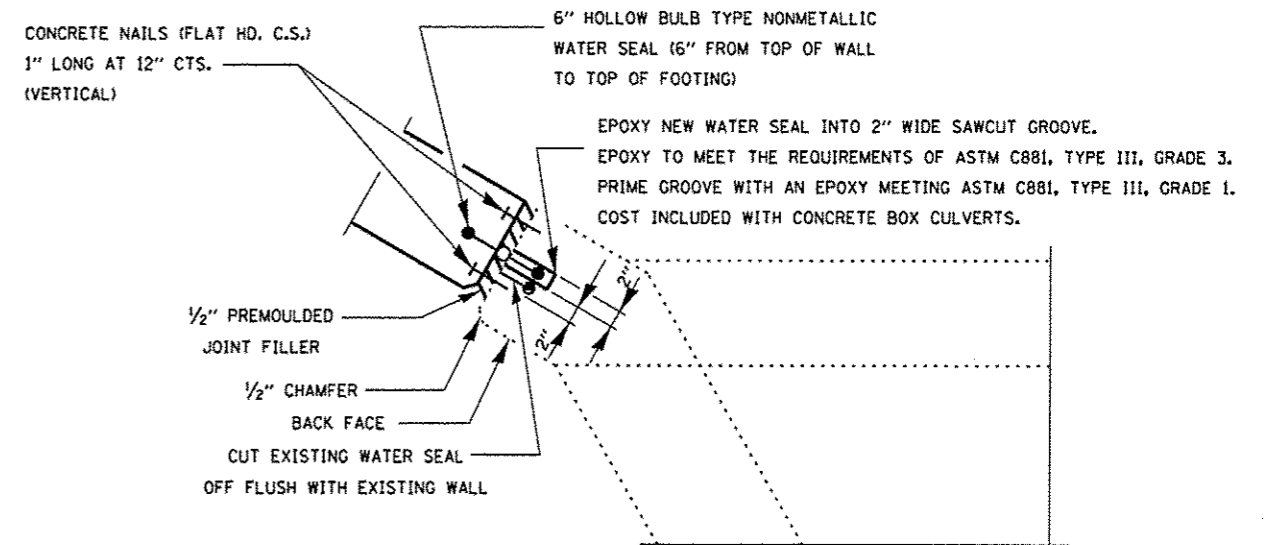
HALF ELEVATION



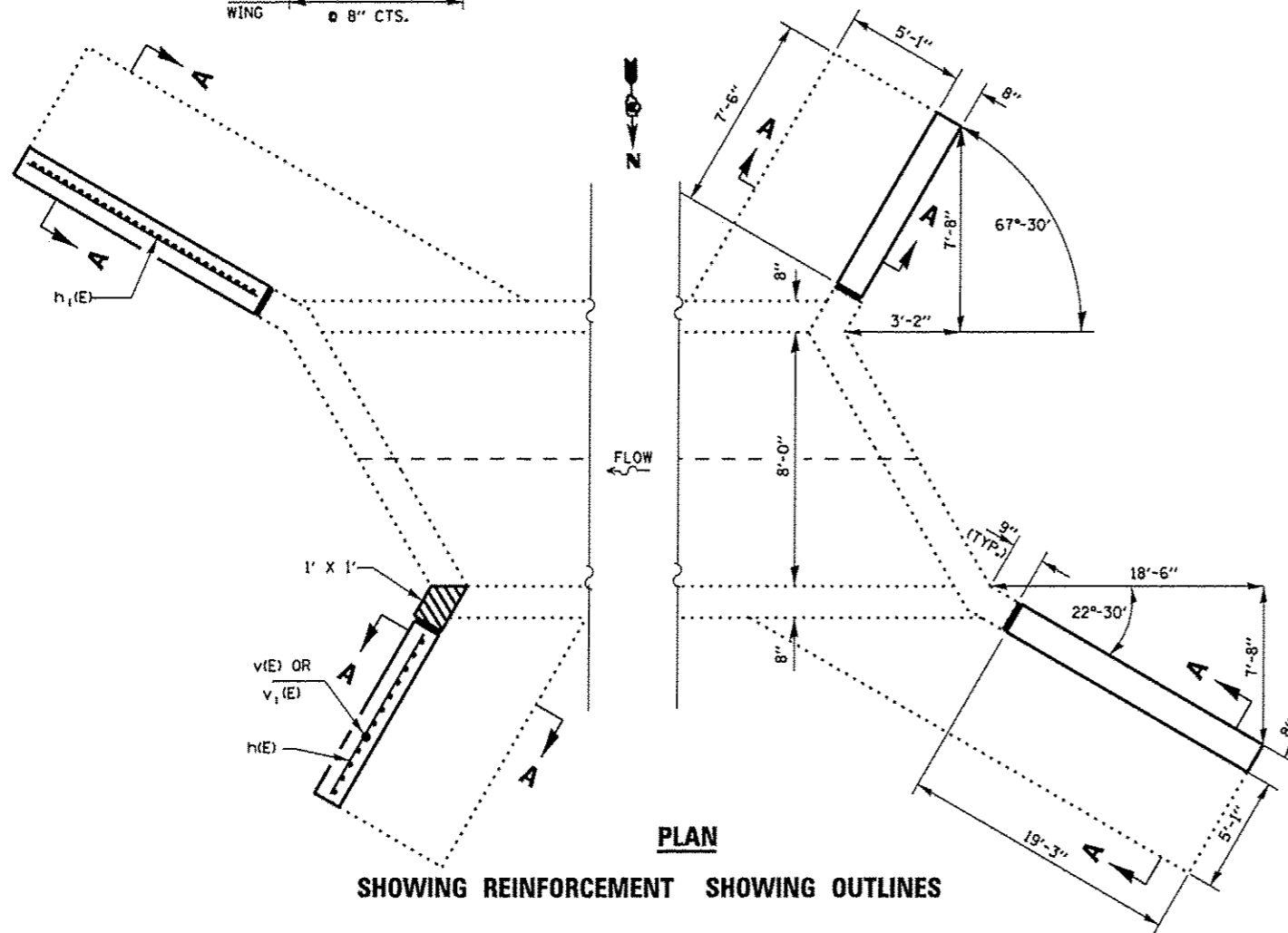
LAP LENGTH

BAR SIZE TO BE SPLICED	MIN. LAP LENGTH
#3	2'-1"
#4	2'-1"
#5	2'-7"
#6	3'-1"

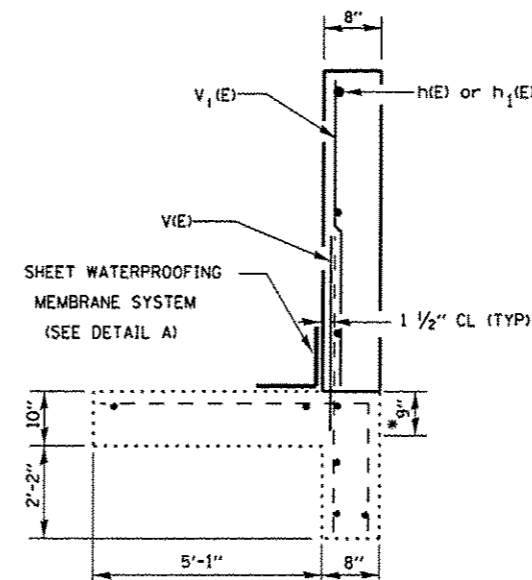
**ORDER V₁(E) BAR FULL LENGTH AND CUT TO FIT SKEW



CORNER DETAIL

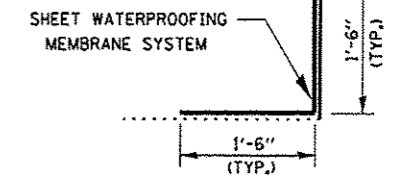


**PLAN
SHOWING REINFORCEMENT SHOWING OUTLINES**



SECTION A-A

* DRILL AND GROUT #5 V(E) BAR INTO EXISTING FOOTING AT SPECIFIED SPACING AND DEPTH IN ACCORDANCE WITH ART. 584 OF THE STANDARD SPECS.



DETAIL A

BILL OF MATERIAL

BAR	NO.	SIZE	LENGTH	SHAPE
h(E)	16	#5	7'-3"	—
h1(E)	16	#5	19'-0"	—
v(E)	74	#5	4'-0"	—
v1(E)	74	#4	7'-9"	—
CONCRETE REMOVAL			CU. YD.	8.2
CONCRETE BOX CULVERTS			CU. YD.	8.2
SHEET WATERPROOFING MEMBRANE SYSTEM			SO. YD.	17.9
REINFORCEMENT BARS, EPOXY COATED			LBS.	1130