

HALF ELEVATION

LAP LENGTH

BAR SIZE TO BE SPLICED	MIN. LAP LENGTH
#3	2'-1"
#4	2'-1"
#5	2'-7"
#6	3'-1"

**ORDER V₁(E) BAR FULL LENGTH AND CUT TO FIT SKEW
 *** h₂(E) BARS SHALL BE DRILLED AND EPOXY GROUTED 9" MIN. INTO EXISTING FACE OF CONCRETE. b₂(E) BARS SHALL BE DRILLED AND EPOXY GROUTED 7" INTO BOTTOM SLAB.

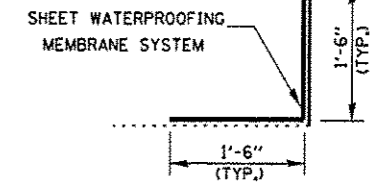
CONCRETE NAILS (FLAT HD. C.S.)
 1" LONG AT 12" CTS.
 (VERTICAL)

6" HOLLOW BULB TYPE NONMETALLIC
 WATER SEAL (6" FROM TOP OF WALL
 TO TOP OF FOOTING)

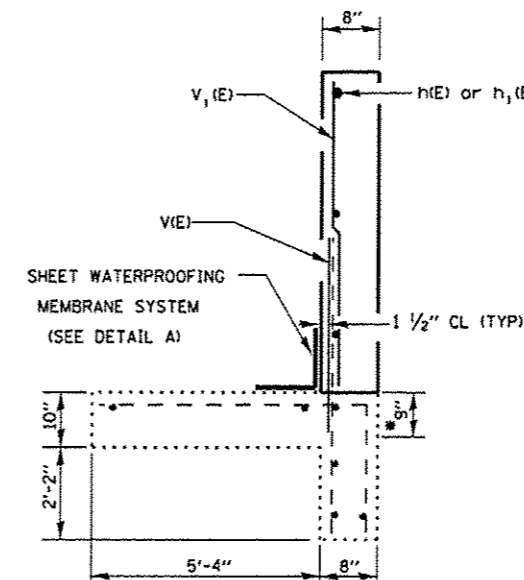
EPOXY NEW WATER SEAL INTO 2" WIDE SAWCUT GROOVE.
 EPOXY TO MEET THE REQUIREMENTS OF ASTM C881, TYPE III, GRADE 3.
 PRIME GROOVE WITH AN EPOXY MEETING ASTM C881, TYPE III, GRADE 1.
 COST INCLUDED WITH CONCRETE BOX CULVERTS.

1/2" PREMOULDED
 JOINT FILLER
 1/2" CHAMFER
 BACK FACE
 CUT EXISTING WATER SEAL
 OFF FLUSH WITH EXISTING WALL

CORNER DETAIL



DETAIL A

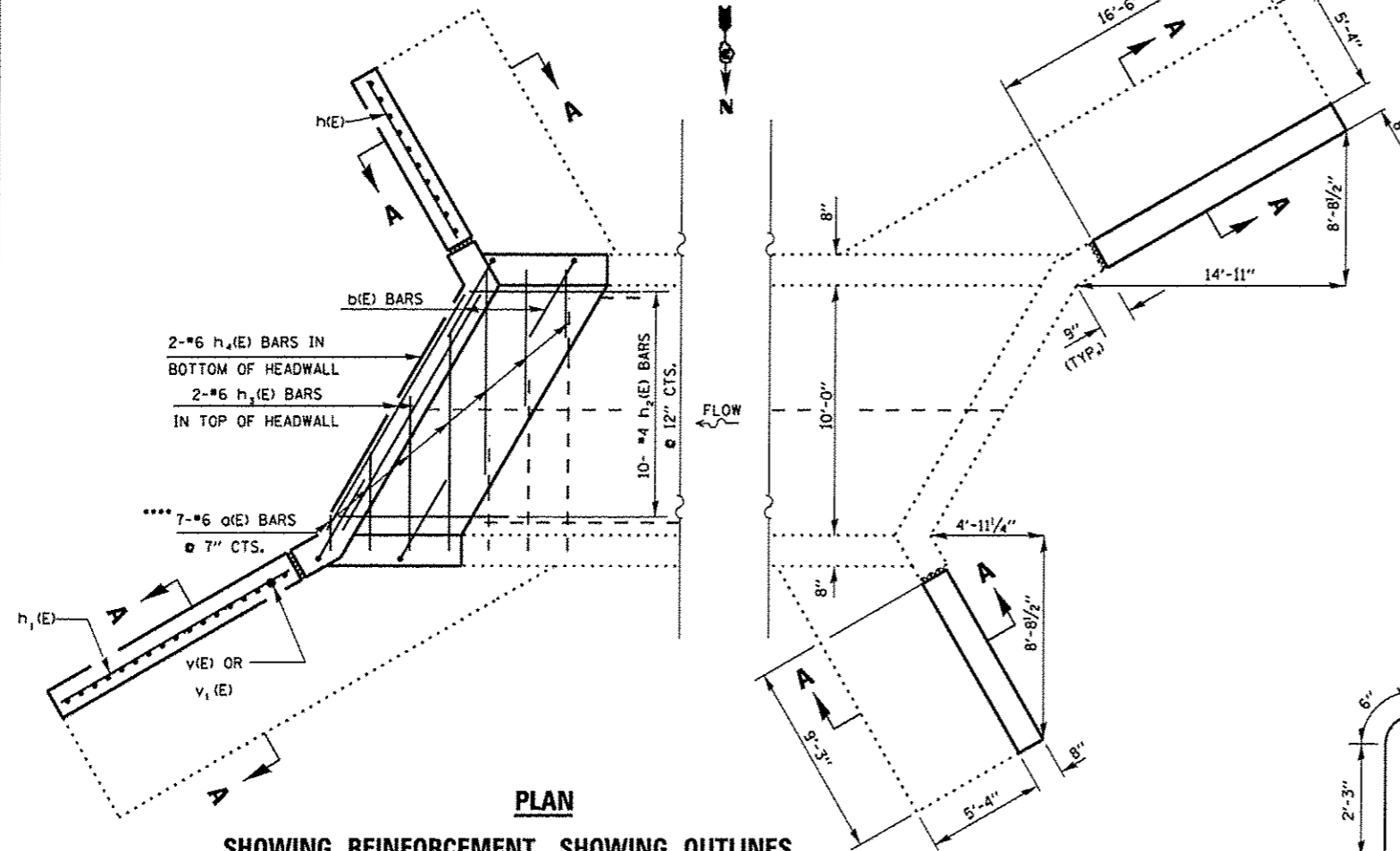


SECTION A-A

*DRILL AND GROUT #5 V1(E) BAR INTO EXISTING FOOTING AT SPECIFIED SPACING AND DEPTH

BILL OF MATERIAL

BAR	NO.	SIZE	LENGTH	SHAPE
a(E)	7	#6	4'-0"	—
b(E)	8	#4	5'-0"	┌
b1(E)	8	#4	7'-0"	—
h(E)	16	#4	8'-11"	—
h1(E)	16	#4	16'-2"	—
h2(E)	24	#4	2'-9"	—
h3(E)	2	#6	12'-0"	—
h4(E)	2	#6	12'-6"	—
s1(E)	14	#4	2'-9"	□
v(E)	54	#5	4'-0"	—
v1(E)	54	#4	8'-10"	—
CONCRETE REMOVAL			CU. YD.	10.6
CONCRETE BOX CULVERTS			CU. YD.	10.6
SHEET WATERPROOFING MEMBRANE SYSTEM			SO. YD.	17.2
REINFORCEMENT BARS, EPOXY COATED			LBS.	1070



PLAN

SHOWING REINFORCEMENT SHOWING OUTLINES

***ORDER a(E) BAR MAX LENGTH AND CUT TO FIT SKEW.
 EXISTING PROTRUDING a(E) BARS SHALL BE CUT TO MIN. LAP LENGTH (SEE CHART ABOVE)

b(E) BAR

**S₁ BAR
 DOWNSTREAM**

FILE NAME *	USER NAME * patalyj	DESIGNED - RS	REVISED -
a:\pwork\p\idoc\patalyj\0311733\0366C	8-shd-detaile.dgn	DRAWN - RS	REVISED -
	PLOT SCALE * 1/8"=1'-0"	CHECKED - RW	REVISED -
	PLOT DATE * 4/3/2013	DATE -	REVISED -

**STATE OF ILLINOIS
 DEPARTMENT OF TRANSPORTATION**

**RECONSTRUCTION DETAILS
 FOR LOCATION 6: SN 047-2526**

SCALE: SHEET 5 OF 6 SHEETS STA. 1396+50

F.A.P. RTE.	SECTION	COUNTY	TOTAL SHEETS	SHEET NO.
311	D3 WW REPAIR 2014-1	*	41	40
*KENDALL & LASALLE		CONTRACT NO. 66C40		
ILLINOIS FED. AID PROJECT				