

ELECTRICAL LOAD FOR INTERSECTION				
STREET NAME	COMPONENT	NUMBER	WATTAGE EACH	BURNTIME %
US 45/52/ KENNEDY DR	RED	4	11	50
	YELLOW	4	22	25
	GREEN	4	15	25
	RED ARROW LT.	2	9	50
	YELLOW ARROW LT.	2	10	25
	GREEN ARROW LT.	2	11	25
NORTH STREET	RED	3	11	50
	YELLOW	3	22	25
	GREEN	3	15	25
	YELLOW ARROW RT.	2	10	10
	GREEN ARROW RT.	2	11	10
	CONTROLLER	2	20	100
TRAFFIC SIGNAL CABINET	CONTROLLER	1	6	100
	UPS	1	50	100

AGENCY RESPONSIBLE FOR TRAFFIC SIGNAL ENERGY CHARGES:  
VILLAGE OF BRADLEY

THERE MAY BE ADDITIONAL ENERGY CHARGES DUE TO  
LIGHTING OR EMERGENCY VEHICLE DETECTION EQUIPMENT.

### TRAFFIC SIGNALS LEGEND

	DENOTES NUMBER OF EXISTING CONDUCTORS
	DENOTES NUMBER OF PROPOSED CONDUCTORS
	EXISTING CONTROLLER AND CABINET
	EXISTING SIGNAL SECTION 12"
	SIGNAL SECTION 12"
	RIGHT TURN GREEN
	RIGHT TURN YELLOW
	EXISTING PEDESTRIAN PUSH BUTTON
	EXISTING WALK/DON'T WALK WITH COUNT DOWN TIMER
	EXISTING TRAFFIC SIGNAL BACKPLATE
	PROPOSED TRAFFIC SIGNAL BACKPLATE

### CONSTRUCTION NOTES:

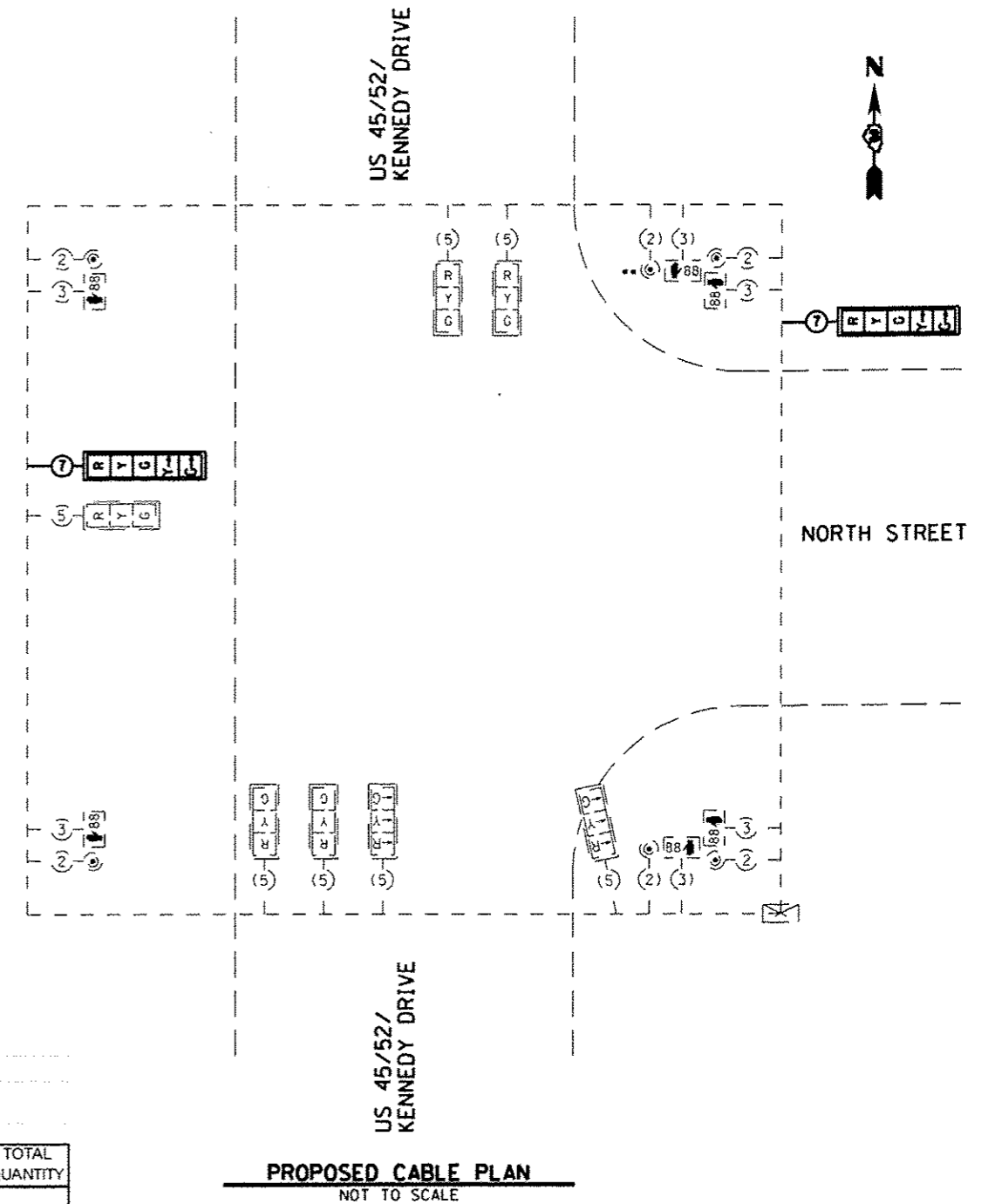
REMOVAL OF THE FOLLOWING ITEMS SHALL BE PAID FOR AS REMOVE EXISTING TRAFFIC SIGNAL EQUIPMENT:

- 1 EACH - SIGNAL HEAD, 1-FACE, 4-SECTION, BRACKET MOUNTED
- 1 EACH - SIGNAL HEAD, 1-FACE, 4-SECTION, MAST ARM MOUNTED

HOLES IN TRAFFIC SIGNAL POSTS OR MAST ARM POLES RESULTING FROM REMOVAL OF SIGNAL HEADS SHALL BE COVERED WITH STAINLESS STEEL PLATES AND MOUNTING HARDWARE. THIS WORK SHALL BE CONSIDERED INCLUDED IN THE COST OF REMOVE EXISTING TRAFFIC SIGNAL EQUIPMENT.

REMOVE AND REPLACE TWO (2) 4-SECTION HEADS WITH LED 5-SECTION HEADS.

- RELOCATE ONE (1) PEDESTRIAN SIGNAL HEAD AT TRAFFIC SIGNAL POST IN THE NORTHEAST QUADRANT OF THE INTERSECTION AS DIRECTED BY THE ENGINEER TO ALLOW PLACEMENT OF NEW 5-SECTION HEAD.



**PROPOSED CABLE PLAN**  
NOT TO SCALE

↑ SEE GENERAL NOTES, ESPECIALLY NUMBER 19

### SCHEDULE OF QUANTITIES (96.7% STATE / 3.3% CITY)

BRADLEY US 45/52 (KENNEDY DR) & NORTH ST			
ITEM NO.	DESCRIPTION	UNIT	TOTAL QUANTITY
85000200	MAINTENANCE OF EXISTING TRAFFIC SIGNAL INSTALLATION	EACH	1
88040150	SIGNAL HEAD, POLYCARBONATE, LED, 1-FACE, 5-SECTION, BRACKET MOUNTED	EACH	1
88040160	SIGNAL HEAD, POLYCARBONATE, LED, 1-FACE, 5-SECTION, MAST ARM MOUNTED	EACH	1
88200410	TRAFFIC SIGNAL BACKPLATE, LOUVERED, FORMED PLASTIC	EACH	2
89500200	RELOCATE EXISTING PEDESTRIAN SIGNAL HEAD ↑	EACH	1
89502375	REMOVE EXISTING TRAFFIC SIGNAL EQUIPMENT	EACH	1