

ELECTRICAL LOAD FOR INTERSECTION				
STREET NAME	COMPONENT	NUMBER	WATTAGE EACH	BURNTIME %
US 45/52/ KENNEDY DRIVE	RED	6	11	50
	YELLOW	6	22	25
	GREEN	6	15	25
	YELLOW ARROW LT.	4	10	10
	GREEN ARROW LT.	4	11	10
FIFTH AVENUE	RED	4	11	50
	YELLOW	4	22	25
	GREEN	4	15	25
	YELLOW ARROW RT.	1	10	10
	GREEN ARROW RT.	1	11	10
TRAFFIC SIGNAL CABINET	CONTROLLER	1	6	100
	UPS	1	50	100

AGENCY RESPONSIBLE FOR TRAFFIC SIGNAL ENERGY CHARGES:
CITY OF KANKAKEE

THERE MAY BE ADDITIONAL ENERGY CHARGES DUE TO LIGHTING OR EMERGENCY VEHICLE DETECTION EQUIPMENT.

TRAFFIC SIGNALS LEGEND

	DENOTES NUMBER OF EXISTING CONDUCTORS
	DENOTES NUMBER OF PROPOSED CONDUCTORS
	EXISTING CONTROLLER AND CABINET
	EXISTING HANDHOLE
	EXISTING DOUBLE HANDHOLE
	EXISTING SERVICE INSTALLATION
	EXISTING TRAFFIC SIGNAL POST
	EXISTING JUNCTION BOX
	EXISTING SIGNAL SECTION 12"
	SIGNAL SECTION 12"
	LEFT TURN GREEN
	LEFT TURN YELLOW
	RIGHT TURN GREEN
	RIGHT TURN YELLOW
	EXISTING PEDESTRIAN PUSH BUTTON
	EXISTING WALK/DON'T WALK WITH COUNT DOWN TIMER
	EXISTING TRAFFIC SIGNAL BACKPLATE
	PROPOSED TRAFFIC SIGNAL BACKPLATE
	EXISTING CONDUIT
	GROUND CABLE IN CONDUIT, NO. 6 SOLID COPPER (GREEN)
	GROUND ROD AT MAST ARM (MA) OR HANDHOLE (H) OR CONTROLLER (C) OR SERVICE INSTALLATION (S) OR JUNCTION BOX (J)

CONSTRUCTION NOTES:

REMOVAL OF THE FOLLOWING ITEMS SHALL BE PAID FOR AS REMOVE EXISTING TRAFFIC SIGNAL EQUIPMENT:

- 3 EACH - SIGNAL HEAD, 1-FACE, 4-SECTION, BRACKET MOUNTED
- 2 EACH - SIGNAL HEAD, 1-FACE, 4-SECTION, MAST ARM MOUNTED

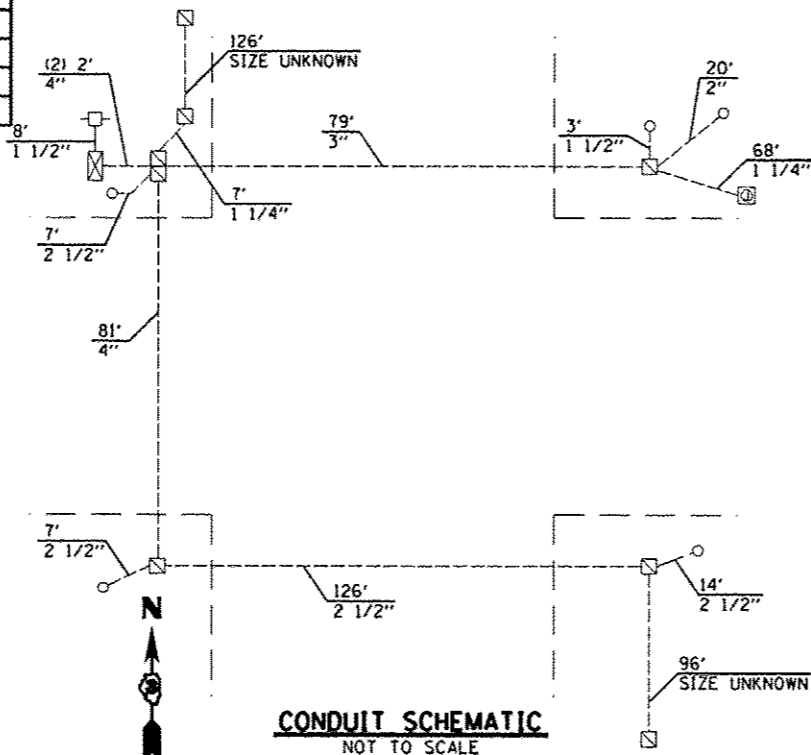
HOLES IN TRAFFIC SIGNAL POSTS OR MAST ARM POLES RESULTING FROM REMOVAL OF SIGNAL HEADS SHALL BE COVERED WITH STAINLESS STEEL PLATES AND MOUNTING HARDWARE. THIS WORK SHALL BE CONSIDERED INCLUDED IN THE COST OF REMOVE EXISTING TRAFFIC SIGNAL EQUIPMENT.

REMOVE AND REPLACE FIVE (5) 4-SECTION HEADS WITH LED 5-SECTION HEADS.

**RELOCATE THREE (3) PEDESTRIAN SIGNAL HEADS AT THE SOUTHEAST AND NORTHWEST QUADRANTS OF THE INTERSECTION AS DIRECTED BY THE ENGINEER TO ALLOW PLACEMENT OF NEW 5-SECTION HEADS.

GROUND EXISTING TRAFFIC SIGNAL STRUCTURES.

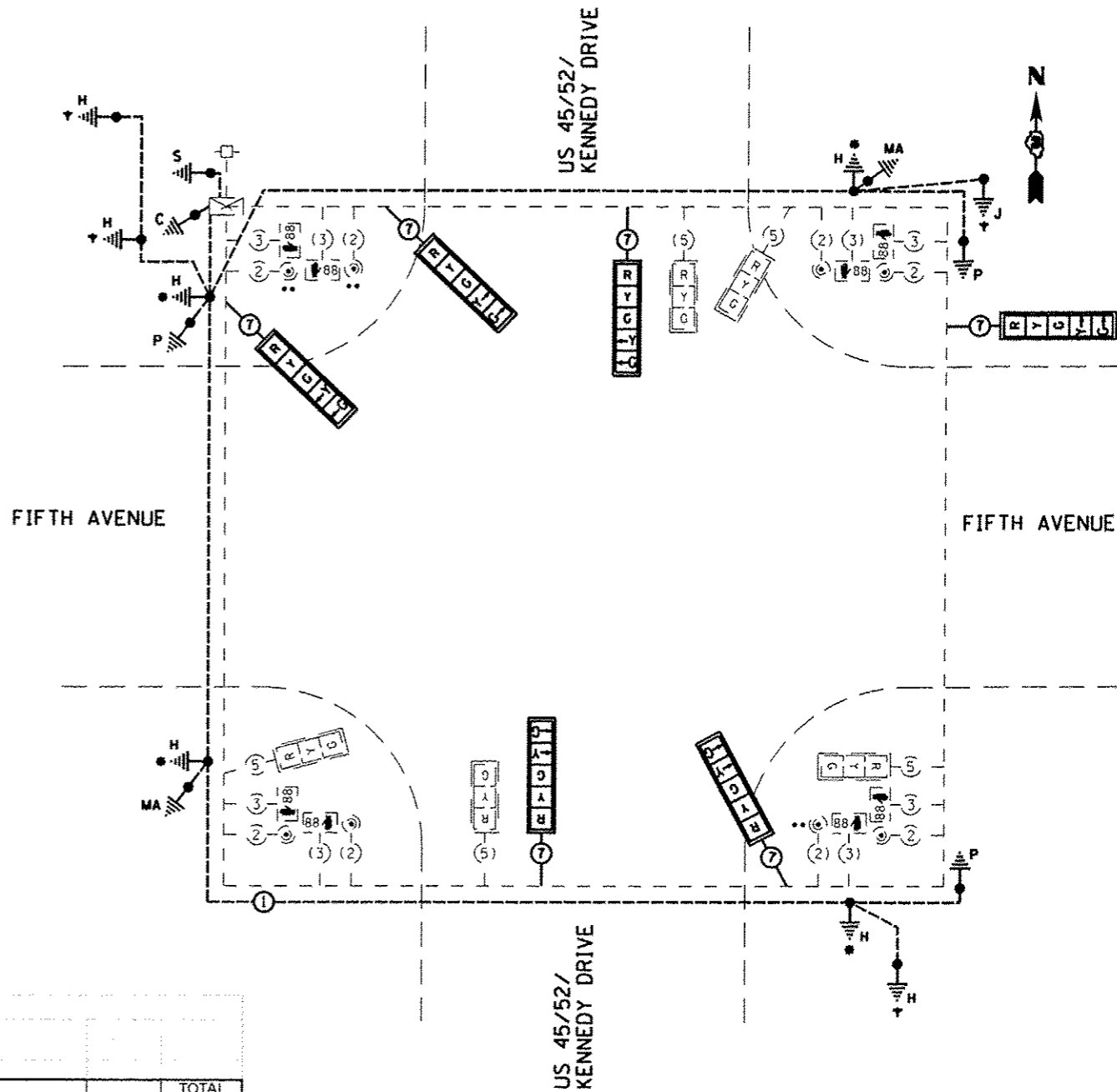
ADD ONE (1) LED 5-SECTION HEAD TO NORTHWEST QUADRANT MAST ARM POLE.



SCHEDULE OF QUANTITIES (95% STATE / 5% CITY)

ITEM NO.	DESCRIPTION	UNIT	TOTAL QUANTITY
85000200	MAINTENANCE OF EXISTING TRAFFIC SIGNAL INSTALLATION	EACH	1
87300010	GROUNDING EXISTING HANDHOLE FRAME AND COVER	EACH	4
87301255	ELECTRIC CABLE IN CONDUIT, SIGNAL NO. 14 7C	FOOT	145
87301900	ELECTRIC CABLE IN CONDUIT, EQUIPMENT GROUNDING CONDUCTOR, NO. 6 1C	FOOT	780
88040150	SIGNAL HEAD, POLYCARBONATE, LED, 1-FACE, 5-SECTION, BRACKET MOUNTED	EACH	4
88040160	SIGNAL HEAD, POLYCARBONATE, LED, 1-FACE, 5-SECTION, MAST ARM MOUNTED	EACH	2
88200410	TRAFFIC SIGNAL BACKPLATE, LOUVERED, FORMED PLASTIC	EACH	6
89500200	RELOCATE EXISTING PEDESTRIAN SIGNAL HEAD *	EACH	3
89502210	MODIFY EXISTING CONTROLLER CABINET	EACH	1
89502375	REMOVE EXISTING TRAFFIC SIGNAL EQUIPMENT	EACH	1
X8140102	GROUND EXISTING HANDHOLE	EACH	4

* SEE GENERAL NOTES, ESPECIALLY NUMBER 19



PROPOSED CABLE PLAN
NOT TO SCALE

- DENOTES GROUND EXISTING HANDHOLE, SEE MISCELLANEOUS DETAILS
- ▼ DENOTES GROUND EXISTING HANDHOLE FRAME AND COVER, SEE HIGHWAY STANDARD 873001